



Shaping our future



SOUTH LAKELAND **LOCAL PLAN** 2040

South Lakeland Local Plan Review

Settlement Services and Accessibility Assessment

April 2021





Contents

1	Introduction.....	5
1.1	Background	5
1.2	Consultation.....	6
2	Methodology	7
2.1	Introduction.....	7
2.2	Settlements Assessed	7
2.3	Assessment of Settlement Population	9
2.4	Assessment of Services and Facilities.....	9
2.5	Assessment of Accessibility to Key Services.....	12
2.6	Summary of Assessment.....	20
3	Draft Assessment – Cartmel Peninsula Settlements	21
3.1	Grange-over-Sands (KSC)	21
3.2	Allithwaite (LSC)	27
3.3	Cartmel (LSC).....	30
3.4	Flookburgh and Cark (LSC).....	33
3.5	Ravenstown (Rural Settlement)	37
3.6	Holker (Rural Settlement)	39
4	Draft Assessment – Furness Peninsula Settlements.....	42
4.1	Broughton-in-Furness (LSC).....	42
4.2	Great and Little Urswick (LSC)	45
4.3	Greenodd/Penny Bridge (LSC).....	49
4.4	Kirkby-in-Furness (LSC)	53
4.5	Swarthmoor (LSC).....	56
4.6	Bardsea (Rural Settlement)	60
4.7	Baycliff (Rural Settlement)	62
4.8	Gleaston (Rural Settlement)	64
4.9	Leece (Rural Settlement).....	66
4.10	Lindal-in-Furness (Rural Settlement).....	68
4.11	Loppergarth (Rural Settlement)	70
4.12	Newbiggin (Rural Settlement).....	72



4.13	Scales (Rural Settlement).....	74
4.14	Stainton with Adgarley (Rural Settlement)	76
5	Draft Assessment – Rural Kendal and the East Settlements.....	79
5.1	Kirkby Lonsdale (KSC)	79
5.2	Milnthorpe (LSC)	83
5.3	Burneside (LSC)	87
5.4	Burton in Kendal (LSC).....	91
5.5	Endmoor (LSC).....	95
5.6	Holme (LSC).....	99
5.7	Levens (LSC).....	102
5.8	Natland (LSC).....	106
5.9	Oxenholme (LSC).....	112
5.10	Ackenthwaite (Rural Settlement)	116
5.11	Endmoor (Low Park) (Rural Settlement).....	118
5.12	Gatebeck (Rural Settlement)	120
5.13	Grayrigg (Rural Settlement).....	122
5.14	Heversham and Leasgill (Rural Settlement)	124
5.15	Hutton Roof (Rural Settlement)	126
5.16	Old Hutton (Rural Settlement)	128
5.17	Old Hutton – Middleshaw (Rural Settlement).....	130
5.18	Old Hutton – Bridge End (Rural Settlement).....	131
5.19	Sedgwick (Rural Settlement)	134
6	Draft Assessment – AONB Settlements	136
6.1	Arnside (LSC)	136
6.2	Storth/Sandside (LSC).....	140
6.3	Beetham (Small Village)	144
6.4	Slackhead (Small Village).....	146
6.5	Carr Bank (Small Village)	148
6.6	Hale (Small Village)	150
7	Summary of Findings.....	153
7.1	Introduction.....	153
7.2	Key Service Centres	153



Shaping our future



SOUTH LAKELAND **LOCAL PLAN** 2040

7.3	Local Service Centres.....	154
-----	----------------------------	-----



1 Introduction

1.1 Background

- 1.1.1 South Lakeland District Council commenced a [review of its Local Plan](#)¹ in early 2020. We are reviewing the existing policies in the adopted Local Plan and updating them where necessary, to ensure that we have a robust and up to date Local Plan for the area that will deliver the development that communities need to thrive, whilst protecting and enhancing our special built, historic and natural environment.
- 1.1.2 As part of the review process we will need to consider how much development is needed up to 2040 and how it might best be distributed across the plan area in a fair and sustainable way to meet needs and support communities. The existing network of towns and villages will be reviewed as part of this process to understand whether our current classification of principal, key and local service centres remains appropriate.
- 1.1.3 As a starting point we are undertaking an assessment of settlements to understand their sustainability, in terms of what local services are available locally within communities, and how accessible they are to a wider range of services.
- 1.1.4 We have prepared this draft assessment based on desktop survey work, largely using available datasets, internet searches, local knowledge and our Gazetteer property address data. We also shared an earlier draft with Parish and Town Councils and ward councillors for comment in late 2020.
- 1.1.5 This report **does not make any recommendations regarding the future status of settlements and how much development they may accommodate in future**. It is an information gathering exercise on the facilities, services and accessibility of settlements to act as a starting point and as baseline information to inform the Local Plan Review. It helps us understand how services and facilities may have changed in our settlements since our current Local Plan was adopted and whether they still meet the definitions set out in our Local Plan. The current definitions and list of settlements are set out below.

Settlement Hierarchy	Current Criteria	Current Settlements
Principal Service Centres	Largest settlements with most facilities.	Kendal and Ulverston

¹ www.southlakeland.gov.uk/LocalPlanReview

Settlement Hierarchy	Current Criteria	Current Settlements
Key Service Centre	<ul style="list-style-type: none"> • Good public transport links to outlying settlements • A primary school, secondary school, library, doctor's surgery and a town centre function providing at least a post office and 2,000 sq m of retail floorspace • A population of more than 1,500 	Grange-over-Sands, Kirkby Lonsdale and Milnthorpe
Local Service Centre	<ul style="list-style-type: none"> • A local shop (selling items to meet everyday needs) • A primary school • 'Good' public transport links – 30 minute public transport journey of a GP, a hospital, a primary school, a secondary school, areas of employment and a major retail centre 	Allthwaite, Arnside, Broughton-in-Furness, Burneside, Burton-in-Kendal, Cartmel, Endmoor, Flookburgh/Cark, Great/Little Urswick, Holme, Kirkby-in-Furness, Levens, Oxenholme, Natland, Penny Bridge/Greenood, Sandside/Storth, Swarthmoor
Smaller villages, hamlets and open countryside	No criteria	All other locations

Table 1: Settlement definitions

- 1.1.6 Once finalised, this audit will help inform a wider review of the sustainability of settlements taking into account their service provision, accessibility, environmental and infrastructure constraints and potential future development opportunities.

1.2 Consultation

- 1.2.1 We shared an early draft of this assessment with Parish and Town Councils and Ward Councillors for comment in early 2020. We asked for factual corrections, any general comments on the adequacy of service provision and infrastructure in the settlements and thoughts around what facilities and services are important for a place to be considered as a sustainable location for future development. We

have incorporated suggested corrections into this updated draft and have provided a summary of comments in relation to settlements. We are publishing this updated draft alongside our Local Plan Review Issues and Options paper for wider public comment.

2 Methodology

2.1 Introduction

- 2.1.1 This section sets out how we have undertaken the draft assessment, including how we have decided which settlements should be assessed, and then how we have assessed their population size, the range of facilities and services within settlements, and how accessible they are to key services.

2.2 Settlements Assessed

- 2.2.1 This assessment covers the key and local service centres (KSCs and LSCs) and rural settlements identified in the existing South Lakeland Local Plan. It does not include the principal service centres of Kendal and Ulverston at this stage. The smaller rural settlements included are those identified on Figure 6 (Settlement Hierarchy) on page 20 of the [Core Strategy](#)².

Cartmel Peninsula Settlements

- Grange-over-Sands (KSC)
- Allithwaite (LSC)
- Cartmel (LSC)
- Flookburgh and Cark (LSC)
- Ravenstown (Rural Settlement)
- Holker (Rural Settlement)

Furness Peninsula Settlements

- Broughton-in-Furness (LSC)
- Great and Little Urswick (LSC)
- Greenodd/Penny Bridge (LSC)
- Kirkby-in-Furness (LSC)
- Swarthmoor (LSC)
- Bardsea (Rural Settlement)
- Baycliff (Rural Settlement)
- Gleaston (Rural Settlement)
- Leece (Rural Settlement)

² <https://www.southlakeland.gov.uk/media/3521/cs01-core-strategy-october-2010.pdf>

- Lindal-in-Furness (Rural Settlement)
- Loppergarth (Rural Settlement)
- Newbiggin (Rural Settlement)
- Scales (Rural Settlement)
- Stainton with Adgarley (Rural Settlement)

Rural Kendal and the East Settlements

- Kirkby Lonsdale (KSC)
- Milnthorpe (LSC)
- Burneside (LSC)
- Burton in Kendal (LSC)
- Endmoor (LSC)
- Holme (LSC)
- Levens (LSC)
- Natland (LSC)
- Oxenholme (LSC)
- Ackenthwaite (Rural Settlement)
- Endmoor (Low Park) (Rural Settlement)
- Gatebeck (Rural Settlement)
- Grayrigg (Rural Settlement)
- Heversham and Leasgill (Rural Settlement)
- Hutton Roof (Rural Settlement)
- Old Hutton (Rural Settlement)
- Old Hutton – Middleshaw (Rural Settlement)
- Old Hutton – Bridge End (Rural Settlement)
- Sedgwick (Rural Settlement)

Arnside and Silverdale AONB Settlements

- Arnside (LSC)
- Storth/Sandside (LSC)
- Beetham (Small Village)
- Slackhead (Small Village)
- Carr Bank (Small Village)
- Hale (Small Village)

2.3 Assessment of Settlement Population

- 2.3.1 The population of each settlement has been assessed using mid-year population estimates for census output areas on a 'best fit' basis. The Census Output Area population estimates are available from the Office for National Statistics website³.
- 2.3.2 Census output areas are the lowest geographical level at which census estimates are provided. Census output areas were designed to have similar population sizes and be as socially homogenous as possible based on tenure and dwelling type.
- 2.3.3 A number of census output areas generally combine to cover settlements, so the population has been estimated for each settlement by combining relevant census output area population figures. Sometime the boundaries of the census output areas do not fit well with the settlement boundaries so a proportion of the census area population figure has been assumed based on the approximate proportion of residential properties in the settlement. Where this is the case the adjusted figure is given in brackets.
- 2.3.4 For each settlement in this report the relevant census output areas and their respective population estimates are listed.

2.4 Assessment of Services and Facilities

- 2.4.1 The assessment includes auditing the range of services and facilities as set out in the table below. The table defines each settlement and show the sources of data we have used to establish what services and facilities are present within each settlement.
- 2.4.2 At this stage the assessment does not list services or facilities that may be nearby a settlement, just those that can be considered to be within it. As work on the Local Plan review progresses we will look at how settlements relate to one another and how facilities and services may serve a number of settlements, but at this stage we are auditing the facilities within each settlement.
- 2.4.3 At this stage the audit is limited to the facilities within the table but may be expanded at a future stage to cover other facilities which contribute to communities for example bakeries, cafes, hairdressers etc.

3

<https://www.ons.gov.uk/peoplepopulationandcommunity/populationandmigration/populationestimates/datasets/censusoutputareaestimatesinthenorthwestregionofengland>

Service / Facility	Notes/definition	Data Source(s)
Convenience Shop / Village Store	This includes shops selling some fresh food that are open at least 6 days a week . It doesn't need to be sufficient for a weekly shop but should at least provide for 'top up' shopping.	<ul style="list-style-type: none"> • Gazetteer property data • Cumbria County Council interactive map⁴ of local grocery shops and supermarkets • SLDC GIS layer of convenience stores • Google maps
Post Office	This includes post offices and post office counters within shops.	<ul style="list-style-type: none"> • Post office branch finder⁵ • Gazetteer property data • Google maps
Health services	This includes GP practices, hospitals, pharmacies, opticians and dentists .	<ul style="list-style-type: none"> • NHS Open Data⁶ • SLDC interactive mapping
Built community facility	This includes any buildings that serve a community purpose for example providing space for groups and clubs to meet or for social occasions. This includes for example village halls, places of worship and pubs.	<ul style="list-style-type: none"> • Gazetteer property data (filtered to Places of Worship, Public Houses and Bars, Community Service Centres, Community Services, Sporting Activities) • Council data on libraries • Google maps
Outdoor community facility	This includes any outdoor space that serves a function as a community space or for recreation , for example a space to play sports or hold village events.	<ul style="list-style-type: none"> • SLDC interactive mapping⁷ (Public open spaces and outdoor sports facilities layers)

⁴ <https://www.cumbria.gov.uk/coronavirus/resourcemap.asp>

⁵ <https://www.postoffice.co.uk/branch-finder>

⁶ <https://www.nhs.uk/about-us/nhs-website-datasets/>

⁷ <https://my.southlakeland.gov.uk/mysouthlakeland.aspx>

Service / Facility	Notes/definition	Data Source(s)
	<p>These facilities could include sports grounds, recreation fields, village greens, allotments, playgrounds etc.</p> <p>The Council will in the near future be commencing an audit of all open spaces, which will include a greater scope of green spaces such as smaller amenity areas. Local communities will be consulted as the study progresses.</p>	
Educational Establishments	This includes nurseries, primary and secondary schools , and further education establishments providing 16 years plus education.	<ul style="list-style-type: none"> • Department for Education open database⁸
High Speed Broadband	Areas covered by a superfast fibre network , whether BT openreach or other providers such as B4RN.	<ul style="list-style-type: none"> • Connecting Cumbria coverage mapping⁹ • B4RN • BT Openreach
Bus Stops	This includes active bus stops from the national database of bus stops (National Public Transport Access Nodes). The codes for these bus stops can be entered into the Traveline website ¹⁰ and live timetables can be viewed.	<ul style="list-style-type: none"> • NaPTAN¹¹ (National Public Transport Access Nodes)
Bus Routes and Frequencies	This includes a summary of the bus routes and the frequency of services that serve settlements.	<ul style="list-style-type: none"> • Cumbria County Council Bus Services Information¹² • Traveline website¹³

⁸ <https://get-information-schools.service.gov.uk/>

⁹ <http://www.connectingcumbria.org.uk/when-and-where.asp>

¹⁰ <https://www.traveline.info/>

¹¹ <http://naptan.app.dft.gov.uk/datarequest/help>

¹² <https://www.cumbria.gov.uk/roads-transport/public-transport-road-safety/transport/publictransport/busserv/busservices.asp>

¹³ <https://www.traveline.info/>

Service / Facility	Notes/definition	Data Source(s)
Railway Station	This includes railway stations that are in use, taken from the national database (National Public Transport Access Nodes).	<ul style="list-style-type: none"> • NaPTAN (National Public Transport Access Nodes)
Train Services	This includes a summary of the train lines and the frequency of services that serve settlements.	<ul style="list-style-type: none"> • National Rail website¹⁴
Public rights of way	<p>Cumbria County Council maintains the definitive public rights of way map. The online illustrative interactive map has been used for this assessment. And the reference number for each right of way passing through the settlement has been recorded.</p> <p>An illustrative online map can be viewed on the County Council's website and also SLDC's interactive mapping¹⁵.</p>	<ul style="list-style-type: none"> • CCC public rights of way map¹⁶
Cycle routes	This includes regional and national cycle routes. The names of the cycle routes passing through settlements have been recorded.	<ul style="list-style-type: none"> • Sustrans¹⁷ • SLDC interactive mapping¹⁸.

Table 2: Services and Facilities Audited

2.5 Assessment of Accessibility to Key Services

2.5.1 In addition to looking at what services and facilities are located within the settlements themselves, we have also considered the wider accessibility of settlements by public transport/walking to 8 key services using the Department for

¹⁴ <https://www.nationalrail.co.uk/>

¹⁵ <https://my.southlakeland.gov.uk/mysouthlakeland.aspx>

¹⁶ <https://apps1.wdm.co.uk/Pipcumbriahms/map.aspx?cg=PROW>

¹⁷ <https://www.sustrans.org.uk/national-cycle-network/>

¹⁸ <https://my.southlakeland.gov.uk/mysouthlakeland.aspx>

Transport's [Journey Time Statistics](https://www.gov.uk/government/collections/journey-time-statistics)¹⁹ data. This is a nationally published dataset based on transport modelling.

- 2.5.2 The Journey Time Statistics give estimates of travel times by public transport/walking, cycling and car from where people live to 8 key local services as listed below. They also estimate the percentage of the population in an area that are within a given travel time from key services, for example the percentage of the population that are within 30 minutes travel time by public transport/walking.

Service	Data source used
Medium sized employment centres	Number of jobs in a Lower Super Output Area (LSOA), plotted as a population weighted centroid of each LSOA, sourced from ONS Business Register Employment Survey. Medium defined as 500-4,999 jobs.
Primary schools	Location of all open primary schools in September of calculation year. Sourced from Department for Education Edubase.
Secondary schools	Location of all open secondary schools in September of calculation year. Sourced from Department for Education Edubase.
Further education colleges	Location of all open further education and sixth form colleges/school sixth form in September of calculation year. Sourced from Department for Education Edubase.
GPs	Sourced from NHS digital table of registered patients at GP practices.
Hospitals	Based on hospitals that are registered with the Care Quality Commission (CQC) and are managed by Acute Trusts. Sourced from the CGC.
Foodstores	Locations of grocery, supermarkets or convenience stores in October of the year of calculation. Sourced from the Local Data Company.
Town Centres	Locations of Town centres using a central focal point for the town

¹⁹ <https://www.gov.uk/government/collections/journey-time-statistics>

Service	Data source used
	mapped to the nearest road. Sourced from 2004 MHCLG town centre and retail planning statistics. (Note: This includes Kendal, Ulverston, and Kirkby Lonsdale in the South Lakeland Local Plan area)

Table 3: Key Services in Journey Time Statistics

- 2.5.3 The methodology behind the Journey Time Statistics which explains how the data on services is sourced, and how the journey times are circulated can be found on the [government's website](#)²⁰.
- 2.5.4 The maps below show the general accessibility to key services in the South Lakeland Local Plan area by public transport/walking. Public transport accessibility is calculated between 7am and 10am on a Tuesday, and a maximum walking distance of 3km is applied. The first map shows the average travel times across the 8 key services, and the second one shows the proportion of the population in each area that is within 30 minutes travel time of key services.

²⁰ <https://www.gov.uk/government/publications/journey-time-statistics-guidance>

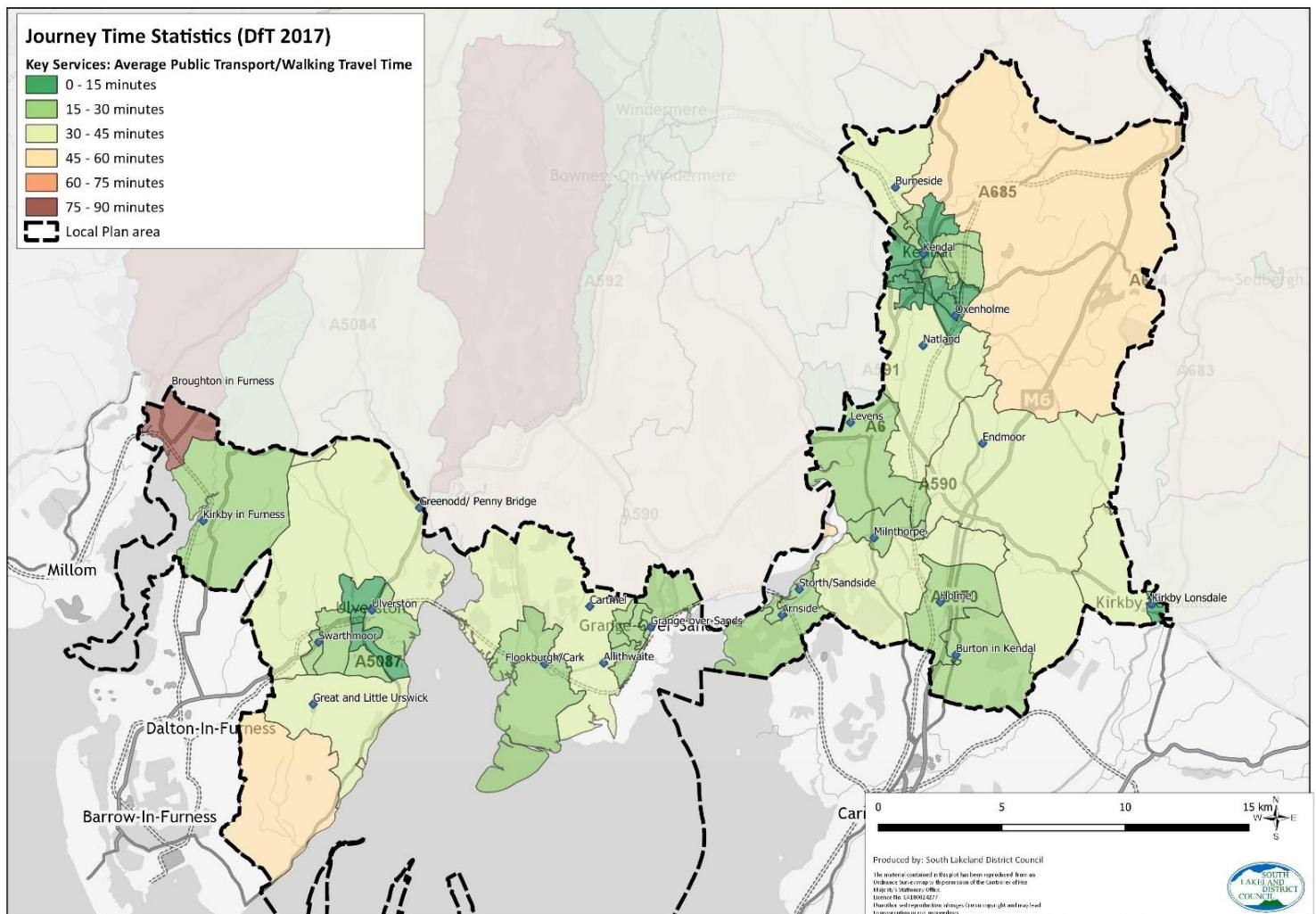


Figure 1: Average Travel Time by Public Transport/ Walking to Key Services



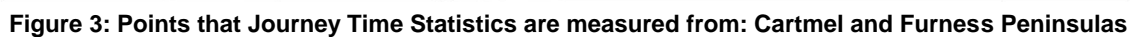
- 16





both the settlements of Flookburgh/Cark and Ravenstown are within the same LSOA boundary, so the journey time statistics for these settlements provided in the report are both from the same point marked by the red cross.

- 2.5.8 When looking at the accessibility of settlements in recognition of some of the limitations of these nationally produced statistics, we have also recorded the bus and rail services that serve each settlement and included this in the facilities and services assessment.



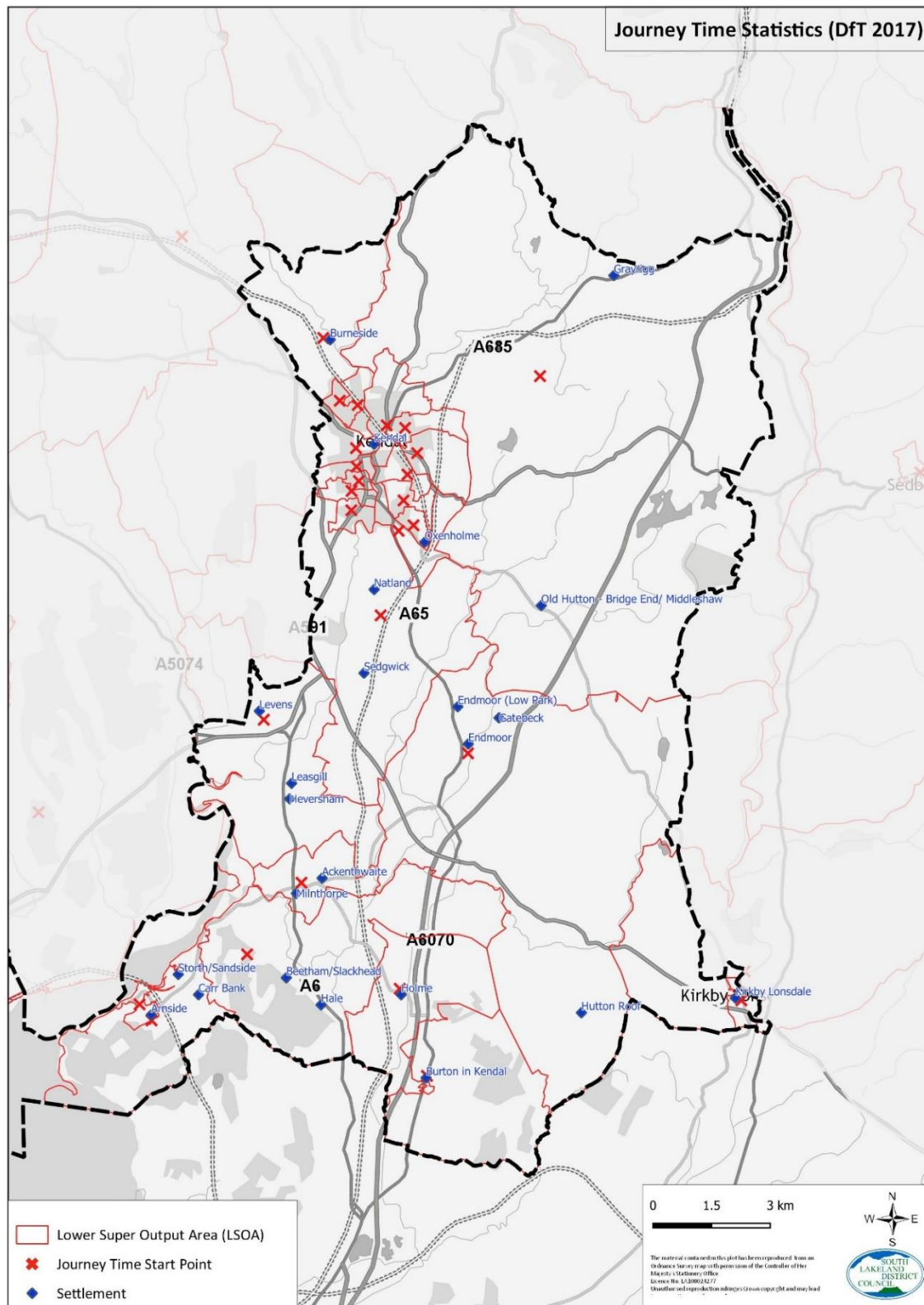


Figure 4: Points that Journey Time Statistics are measured from: Kendal and East

2.6 Summary of Assessment

- 2.6.1 Following the assessment the final section provides a brief summary of the findings and summarises which settlements continue to meet the existing Local Plan criteria for local and key service centres.
- 2.6.2 For those settlements that no longer meet the criteria it explains the reasons why, for example which services they may have lost in recent years.

3 Draft Assessment – Cartmel Peninsula Settlements

3.1 Grange-over-Sands (KSC)

Population

- 3.1.1 The 2018 mid-year estimate of the population of Grange-over-Sands was 4,259 people. This is based on the combined population estimates for the following census output areas.

Census Output Area	2018 Population Estimate	Settlement
E00097828	199	Grange-over-Sands
E00097827	199	Grange-over-Sands
E00097821	285	Grange-over-Sands
E00097822	375	Grange-over-Sands
E00097818	268	Grange-over-Sands
E00097824	228	Grange-over-Sands
E00097832	335	Grange-over-Sands
E00097819	245	Grange-over-Sands
E00097830	272	Grange-over-Sands
E00097823	217	Grange-over-Sands
E00097825	281	Grange-over-Sands
E00097826	228	Grange-over-Sands
E00097829	274	Grange-over-Sands
E00097833	281	Grange-over-Sands
E00097820	368	Grange-over-Sands
E00097831	204	Grange-over-Sands
Total	4259	Grange-over-Sands

Table 4: Grange-over-Sands - Population

Facilities and Services within the Settlement

Service / Facility Category	Details
Convenience Shop	Spar Co-operative Food Tesco Express
Post Office	Grange-over-Sands Post Office
Health services	Avondale Dental Practice Nutwood Medical Practice and Well Pharmacy S C & T Bagot Optometrists Well Pharmacy Kents Bank Road

Service / Facility Category	Details
	Lakeland Optical BUPA Dental Care St John's Hearing Aid Centre
Built community facility	Victoria Hall Grange Library United Reformed Church Hall Parish Hall St Charles RC Church United Reformed Church St Pauls Church Methodist Church Keg and Kitchen
Outdoor community facility	The Promenade, including play area, putting, basketball court, skate park and tennis court. Yew Tree playing fields, tennis court (club only – not public) and play area Fell Close Play Area Grange CE School playing fields Ornamental Gardens Bandstand, Park Road Yewbarrow Allotments Grange Fell Allotments Grange Community Orchard
Educational Establishments	Grange CofE Primary School
High Speed Broadband	TBC
Bus Stops	<div> <div>cumdjadj cumdjadp</div> <div>Church of St Paul Main Street Station Entrance Station Entrance</div> </div> <div> <div>cumdjadw cumdjapd cumdjamp cumdjamg cumdjama cumdjaja cumdwajt cumdwajw cumdjamw</div> <div>Greenlea Rail Station Kentsford Road Kirkhead Road Kentsford Road Rail Station Kirkhead Road Fair Oak Greenlea</div> </div>

Service / Facility Category	Details
	<p>cumdjajd Post Office</p> <p>cumdpwgm Westcliffe Gardens</p> <p>cumdpwgj Fell Drive</p> <p>cumdwjap Fell Drive</p> <p>cumdwjat Westcliffe Gardens</p> <p>cumdjagj Silver How</p> <p>cumdjagm Rail Station</p> <p>cumdjamt United Reformed Church</p> <p>cumdjajm Berners Close</p> <p>cumdjajp Fair Oak</p> <p>cumdjajg United Reformed Church</p> <p>cumdpgjw Fire Station</p> <p>cumdjadm Tourist Information Centre</p> <p>Station Entrance</p>
Bus Routes and Frequencies	<p>530 – Cartmel to Kendal: Operates Mondays to Fridays, approx. 2/3 services per day.</p> <p>532 – Cartmel to Grange-over-Sands: Operates Mondays to Fridays, 1 service per day.</p> <p>X6 – Barrow to Kendal: Operates Mondays to Saturdays approx. hourly services. Sundays 4 services per day.</p>
Railway Station	<p>Kents Bank Rail Station</p> <p>Grange-over-Sands Rail Station</p>
Train Services	<p>Served by the Furness Line which runs between Barrow-in-Furness and Carnforth and provides connections to the West Coast Main Line at Lancaster and the Cumbrian Coast Line at Barrow-in-Furness.</p> <p>Service frequency is generally 1 to 2 trains per hour.</p>
Public rights of way	<p>526016 526002</p> <p>526004 526025</p> <p>526042 526003</p> <p>526018 526015</p> <p>526001 526019</p> <p>526043 526014</p> <p>526013 526017</p> <p>526009 526017</p>
Cycle routes	<p>Bay Cycleway</p> <p>Walney to Wear & Whitby (W2W)</p>



Service / Facility Category	Details
	Walney to Wear & Whitby (W2W) & Bay Cycleway

Table 5: Grange-over-Sands: Facilities and Services

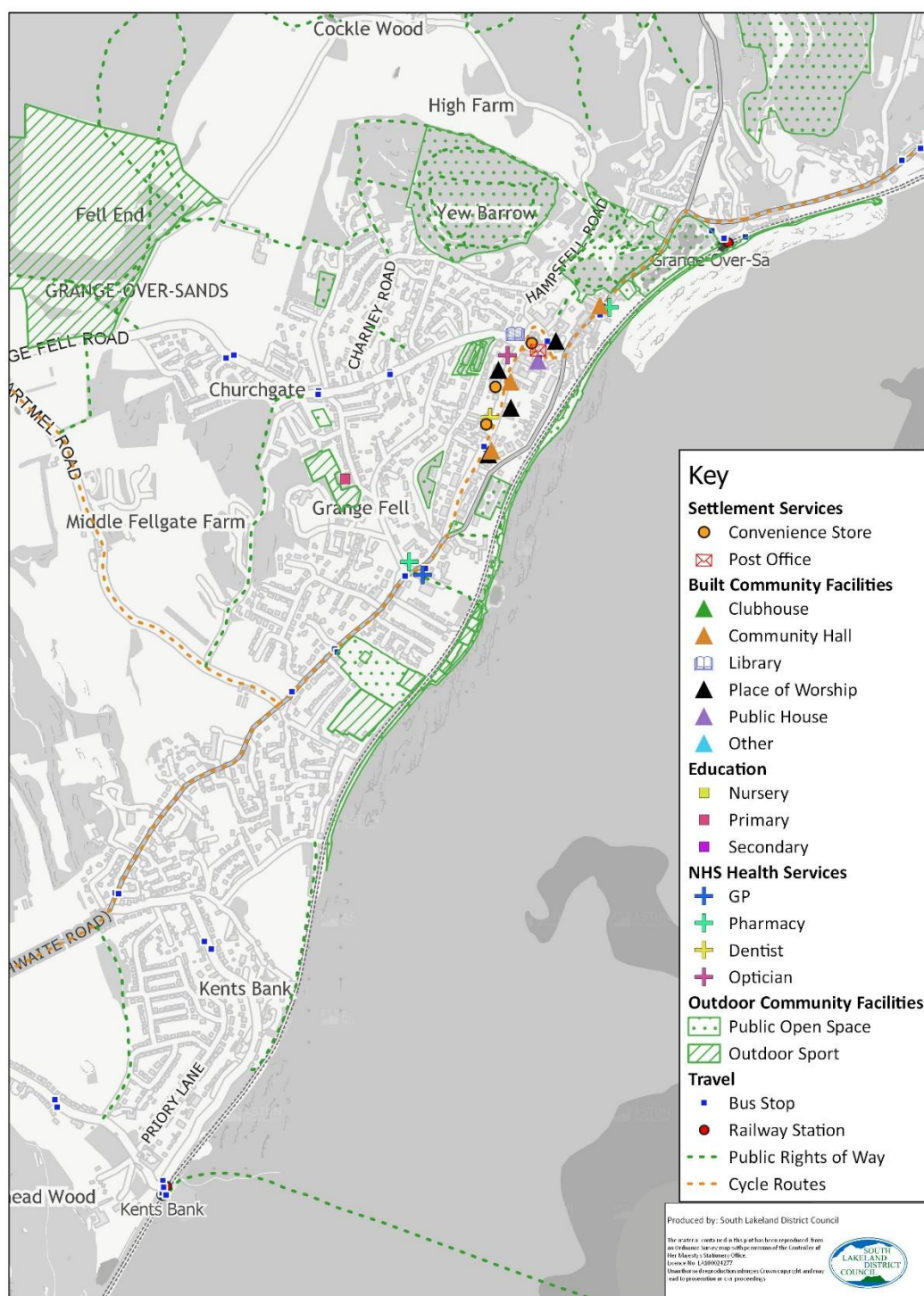


Figure 5: Grange-over-Sands - Facilities and Services

Comments/Feedback on First Draft

3.1.2 Grange-over-Sands Town Council provided the following comments in response to the early draft of this document:

- Health Services: Remove Peninsula Medical Practice - this has joined Nutwood. Well Pharmacy Main Street has moved from Main Street to Nutwood Medical Practice. Add: Lakeland Optical Ltd., BUPA Dental Care, St John's Hearing Aid Centre
- Built Community Facility: Remove Parish Hall as this has closed, Add Methodist Church School Room, Add St Charles RC Church Meeting Room, Add Grange Institute
- Outdoor Community Facility: Bowling is no longer available on the Promenade, Tennis Court on Yew Tree playing fields is a club facility - not a public facility, Public Gardens adjacent to Main Street is called The Ornamental Gardens, Are the Grange CE School playing fields a public space? Add Community Orchard
- Educational Establishments: Add Grange C of E Nursery, Add Grange Pre-School
- Bus Stops: Rename Tourist Information Centre - call it Victoria Hall (Info Centre is closed)
- Bus Route and Frequencies: This section as it stands is misleading as the bus services are minimal. They are changeable and irregular. There is currently no up to date timetable available online.

Accessibility to Key Services

Settlement: Grange-over-Sands LSOA: E01019354	Medium employment centre	Primary School	Secondary School	Further Education	GP	Hospital	Food Store	Town Centre*	Average for all Services	Overall Rating
% population with 30 minutes public transport/ walking	100	100	86	28	100	0	100	18	67	Fair
Average travel time by public transport/ walking in minutes	6	12	26	37	10	54	5	34	23	Good

Table 6: Grange-over-Sands - Journey Time Statistics

*Note: Grange over Sands is not classified as a 'Town Centre' in the government dataset used in the model. Only Kendal, Ulverston and Kirkby Lonsdale are classed as Town Centres in the modelling.

3.2 Allithwaite (LSC)

Population

- 3.2.1 The 2018 mid-year estimate of the population of Allithwaite was 1,064 people. This is based on the combined population estimates for the following census output areas.

Census Output Area	2018 Population Estimate	Settlement
E00097794	319	Allithwaite
E00097792	393	Allithwaite
E00097790	352	Allithwaite
Total	1,064	Allithwaite

Table 7: Allithwaite - Population

Facilities and Services within the Settlement

Service / Facility Category	Details
Convenience Shop	Allithwaite Post Office and General Store
Post Office	Allithwaite Post Office and General Store (Post Office open Tuesdays and Thursdays 1.30pm – 3.30pm)
Health services	
Built community facility	Allithwaite Community Centre St Marys Church Kingdom Hall Of Jehovahs Witnesses Mary Lambert Hall The Pheasant Inn
Outdoor community facility	Allithwaite Play Area Allithwaite Playing Fields
Educational Establishments	Allithwaite CofE Primary School
High Speed Broadband	TBC
Bus Stops	cumdgmtw Yakkers cumdgmtp Kirkhead View cumdgmtm Hazelgarth

Service / Facility Category	Details
	cumdgmpg Yakkers cumdgmp Lane Ends
Bus Routes and Frequencies	530 – Cartmel to Kendal: Operates Mondays to Fridays, approx. 2/3 services per day.
Railway Station	None
Train Services	None
Public rights of way	549029 549035 549034
Cycle routes	Bay Cycleway Walney to Wear & Whitby (W2W)

Table 8: Allithwaite - Facilities and Services

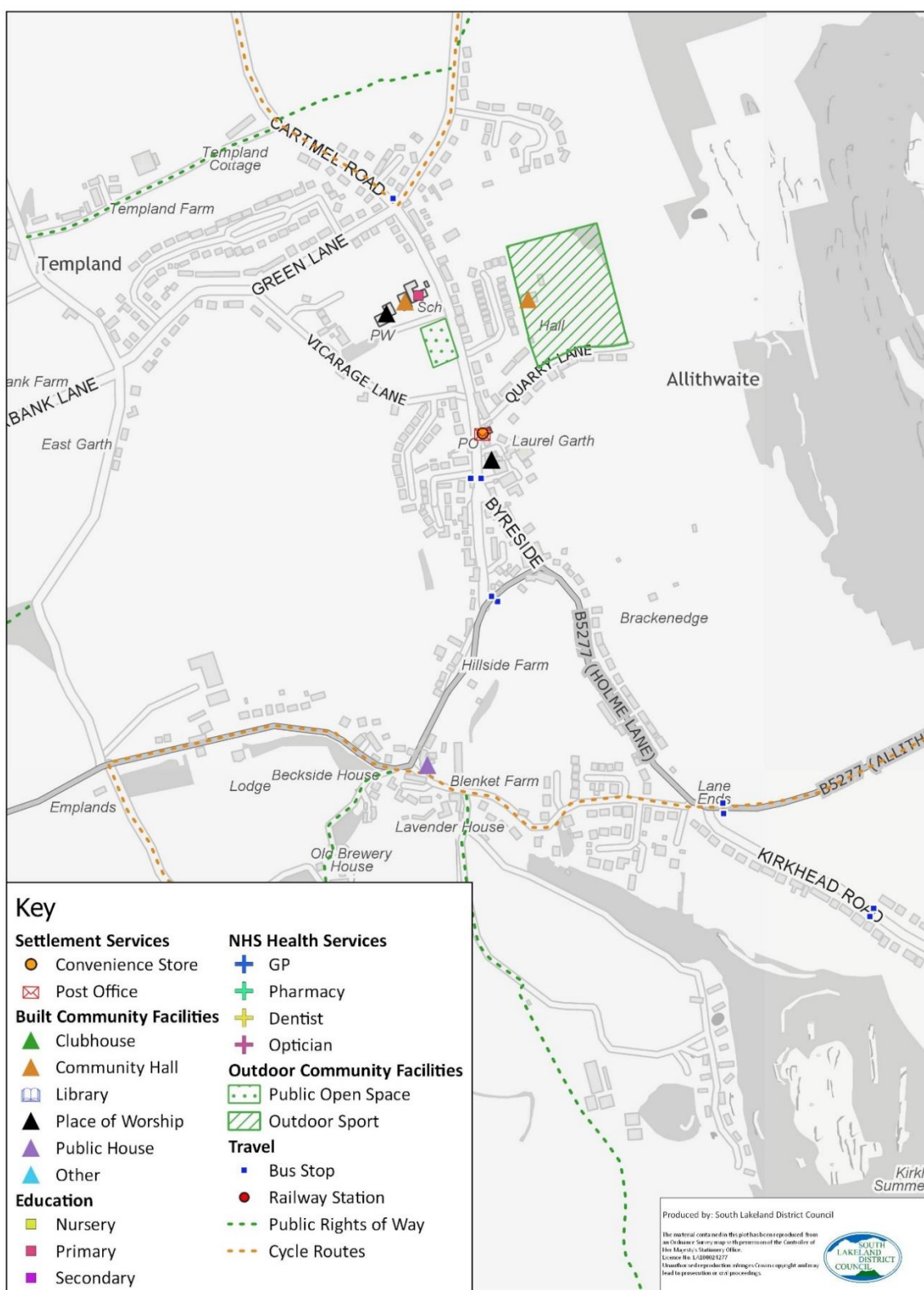


Figure 6: Allithwaite – Facilities and Services

Accessibility to Key Services

Settlement: Allithwaite LSOA: E01019349	Medium employment centre	Primary School	Secondary School	Further Education	GP	Hospital	Food Store	Town Centre	Average for all Services	Overall Rating
% population with 30 minutes public transport/ walking	100	100	100	0	100	0	100	0	63	Fair
Average travel time by public transport/ walking in minutes	12	6	14	77	15	91	14	77	38	Fair

Table 9: Allithwaite - Journey Time Statistics

3.3 Cartmel (LSC)

Population

- 3.3.1 The 2018 mid-year estimate of the population of Cartmel was 840 people. This is based on the combined population estimates for the following census output areas.

Census Output Area	2018 Population Estimate	Settlement
E00097793	209	Cartmel
E00097789	347	Cartmel
E00097791	284	Cartmel
Total	840	Cartmel

Table 10: Cartmel - Population

Facilities and Services within the Settlement

Service / Facility Category	Details
Convenience Shop	Cockles in Cartmel (Premier)
Post Office	Post Office (within Art Gallery, part time opening Tuesdays and Thursdays 9.30am – 1pm)
Health services	Cartmel GP Surgery

Service / Facility Category	Details
Built community facility	<p>Cartmel Priory Quaker Meeting House Cartmel Methodist Church Cartmel Institute Village Hall Kings Arms (closed and for sale) The Cavendish Arms The Royal Oak Inn (closed and for sale – under offer) Pig and Whistle Public House</p>
Outdoor community facility	<p>Allotment Gardens adjacent Cartmel Village Hall Town End Triangle play area Cartmel Priory CE School tennis courts and field Cartmel Park including cricket pitch</p>
Educational Establishments	<p>Cartmel CofE Primary School Cartmel Priory CofE Secondary School</p>
High Speed Broadband	TBC
Bus Stops	<p>cumdwjmj Quaker Meeting House cumdwpdm Quaker Meeting House cumdgmt d Priory C of E School cumdgm p j Clogger Beck cumdgm pm Headless Cross</p>
Bus Routes and Frequencies	<p>530 – Cartmel to Kendal: Operates Mondays to Fridays, approx. 2/3 services per day. 532 – Cartmel to Grange-over-Sands: Operates Mondays to Fridays, 1 service per day.</p>
Railway Station	
Train Services	
Public rights of way	<p>549052 549051 549023 549049 549050</p>
Cycle routes	Walney to Wear & Whitby (W2W) & Bay Cycleway

Table 11: Cartmel - Facilities and Services

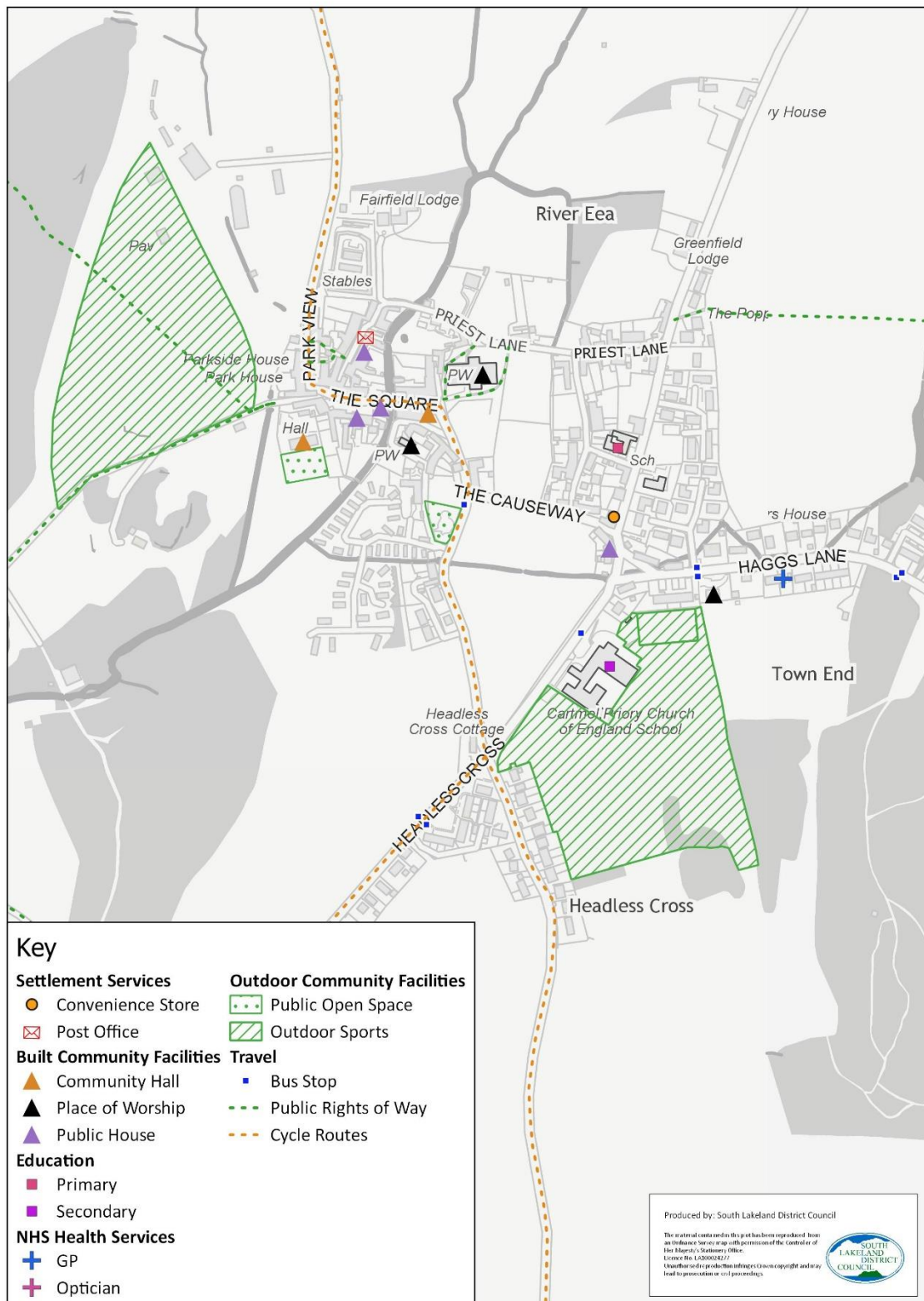


Figure 7: Cartmel - Facilities and Services

Accessibility to Key Services

Settlement: Cartmel LSOA: E01019349	Medium employment centre	Primary School	Secondary School	Further Education	GP	Hospital	Food Store	Town Centre	Average for all Services	Overall Rating
% population with 30 minutes public transport/ walking	100	100	100	0	100	0	100	0	63	Fair
Average travel time by public transport/ walking in minutes	12	6	14	77	15	91	14	77	38	Fair

Table 12: Cartmel: Journey Time Statistics

3.4 Flookburgh and Cark (LSC)

Population

- 3.4.1 The 2018 mid-year estimate of the population of Flookburgh/Cark was 1,304 people. This is based on the combined population estimates for the following census output areas.

Census Output Area	2018 Population Estimate	Settlement
E00097840	353	Flookburgh/Cark
E00097841	289	Flookburgh/Cark
E00097842	358	Flookburgh/Cark
E00097845	304	Flookburgh/Cark
Total	1,304	Flookburgh/Cark

Table 13: Flookburgh and Cark: Population

Facilities and Services within the Settlement

Service / Facility Category	Details
Convenience Shop	Cockles Convenience Store (Premier) The Cabin (Londis)
Post Office	Post Office (Open Monday – Saturday)
Health services	Fairfield Surgery The Flookburgh Pharmacy

Service / Facility Category	Details
Built community facility	St John The Baptist Church Flookburgh Village Hall Lower Holker Community Hall Rose and Crown Inn The Engine Inn Hope and Anchor
Outdoor community facility	Flookburgh Village Square Flookburgh school playing fields Allotment Gardens adjacent Eccleston Meadow Flookburgh Church and surrounding land Flookburgh Primary School play area Flookburgh community playground Moorside Play Area Flookburgh burial ground Lower Holker Bowling Club Play Area, Station Road, Cark
Educational Establishments	Flookburgh CofE Primary School
High Speed Broadband	TBC
Bus Stops	cumdjdp Market Square cumdwajp Chapel cumdjtd Hope & Anchor cumdpwdw Rail Station cumjdjpw Engine Inn cumjdjtg Engine Inn
Bus Routes and Frequencies	530 – Cartmel to Kendal: Operates Mondays to Fridays, approx. 2/3 services per day.
Railway Station	Cark Railway Station
Train Services	Served by the Furness Line which runs between Barrow-in-Furness and Carnforth and provides connections to the West Coast Main Line at Lancaster and the Cumbrian Coast Line at Barrow-in-Furness. Service frequency is generally 1 to 2 trains per hour.

Service / Facility Category	Details
Public rights of way	550002 550008 550001
Cycle routes	Bay Cycleway

Table 14: Flookburgh and Cark - Services and Facilities

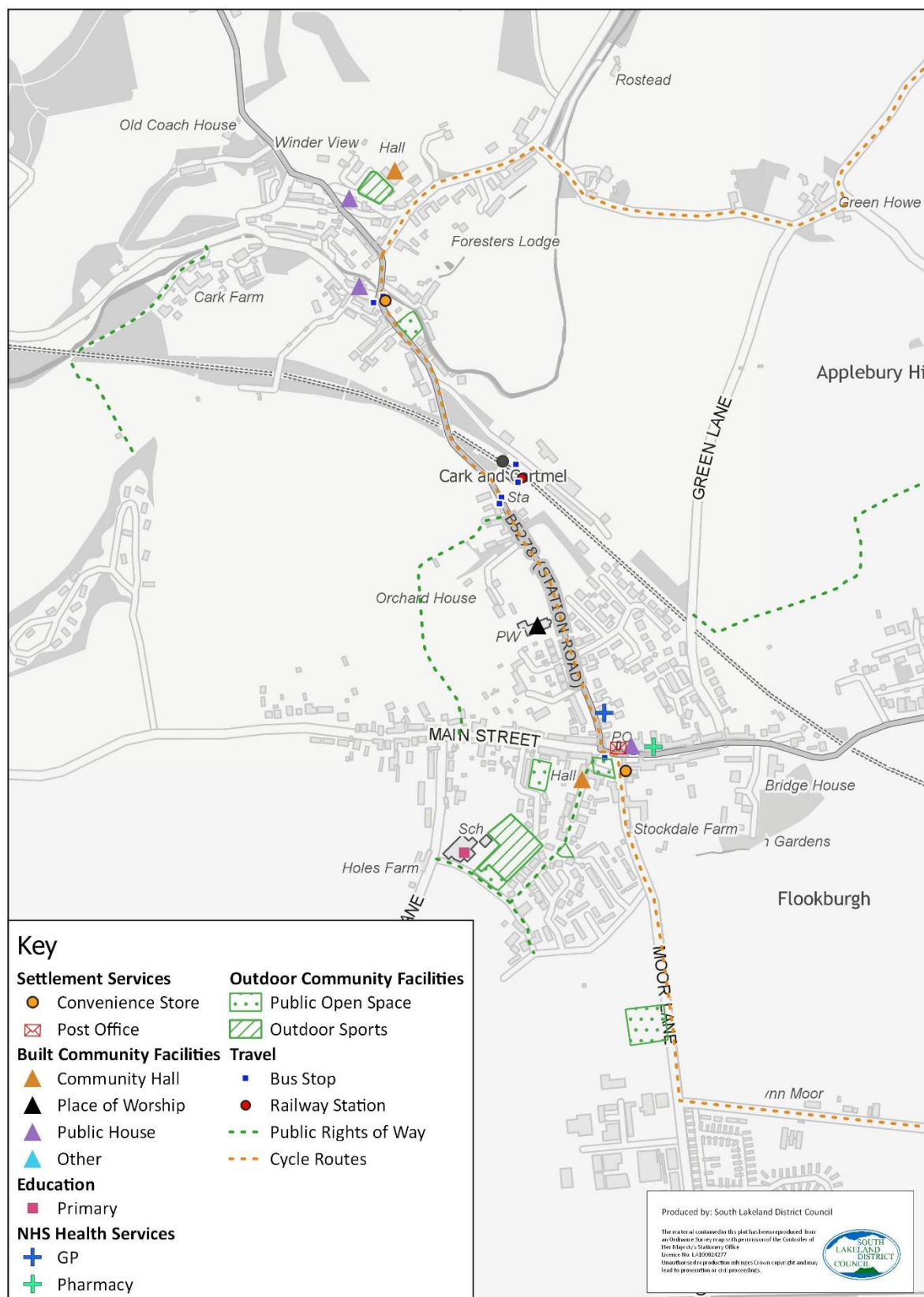


Figure 8: Flookburgh and Cark – Facilities and Services

Comments/Feedback on First Draft

3.4.2 Lower Holker Parish Council provided the following comments in response to the early draft of this document:

- Amend Village Hall to Flookburgh Village Hall (retain Lower Holker Village Hall as well)
- Remove Crown Inn - currently being converted to dwellings
- Outdoor community facility - add Flookburgh Community Playground - opened in 2017
- Facilities well used and valued by the community
- Issues with pot holes requiring repeated road repairs

Accessibility to Key Services

Settlement: Flookburgh/Cark LSOA: E01019357	Medium employment centre	Primary School	Secondary School	Further Education	GP	Hospital	Food Store	Town Centre	Average for all Services	Overall Rating
% population with 30 minutes public transport/ walking	100	100	41	39	52	0	100	35	58	Fair
Average travel time by public transport/ walking in minutes	8	9	31	31	32	64	12	33	28	Good

Table 15: Flookburgh and Cark - Journey Time Statistics

3.5 Ravenstown (Rural Settlement)

Population

3.5.1 The 2018 mid-year estimate of the population of Ravenstown was 417 people. This is based on the combined population estimates for the following census output areas.

Census Output Area	2018 Population Estimate	Settlement
E00097844	264 (92)	Ravenstown and wider Holker area, approx. 35% of houses in this area are in Ravenstown.
E00097843	325	Ravenstown including Winder Moor area
Total	417	Ravenstown

Table 16: Ravenstown - Population

Facilities and Services within the Settlement

Service / Facility Category	Details
Convenience Shop	
Post Office	
Health services	
Built community facility	Ravenstown Club
Outdoor community facility	
Educational Establishments	
High Speed Broadband	TBC
Bus Stops	cumdwajm Jutland Avenue cumdjdpn Jutland Avenue
Bus Routes and Frequencies	530 – Cartmel to Kendal: Operates Mondays to Fridays, approx. 2/3 services per day.
Railway Station	
Train Services	
Public rights of way	

Service / Facility Category	Details
Cycle routes	

Table 17: Ravenstown – Facilities and Services

Comments/Feedback on First Draft

3.5.2 Lower Holker Parish Council provided the following comments in response to the early draft of this document:

- Add Ravenstown Working Men's club
- Facilities well used and valued by the community
- Issues with pot holes requiring repeated road repairs

Accessibility to Key Services

Settlement: Ravenstown LSOA: E01019357	Medium employment centre	Primary School	Secondary School	Further Education	GP	Hospital	Food Store	Town Centre	Average for all Services	Overall Rating
% population with 30 minutes public transport/ walking	100	100	41	39	52	0	100	35	58	Fair
Average travel time by public transport/ walking in minutes	8	9	31	31	32	64	12	33	28	Good

Table 18: Ravenstown – Journey Time Statistics

3.6 Holker (Rural Settlement)

Population

3.6.1 The 2018 mid-year estimate of the population of Holker was 140 people. This is based on a proportion of the population estimate for the following census output area.

Census Output Area	2018 Population Estimate	Settlement
E00097844	264 (140)	Holker
Total	140	Holker

Table 19: Holker – Population



Shaping our future



SOUTH LAKELAND **LOCAL PLAN** 2040

Facilities and Services within the Settlement

Service / Facility Category	Details
Convenience Shop	
Post Office	
Health services	
Built community facility	
Outdoor community facility	
Educational Establishments	
High Speed Broadband	
Bus Stops	
Bus Routes and Frequencies	
Railway Station	
Train Services	
Public rights of way	550006
Cycle routes	

Table 20: Holker - Facilities and Services

4 Draft Assessment – Furness Peninsula Settlements

4.1 Broughton-in-Furness (LSC)

Population

- 4.1.1 The 2018 mid-year estimate of the population of Broughton-in-Furness was 469 people. This is based on the combined population estimates for the following census output areas.

Census Output Area	2018 Population Estimate	Settlement
E00097762	211	Broughton-in-Furness
E00097763	258	Broughton-in-Furness
Total	469	Broughton-in-Furness

Table 21: Broughton-in-Furness – Population

Facilities and Services within the Settlement

Service / Facility Category	Details
Convenience Shop	Melville Tyson Grocers
Post Office	Post Office and Newsagent (Open Monday to Saturday)
Health services	Duddon Valley Medical Practice
Built community facility	Methodist Church Church Of St Mary Magdalene Victory Hall Manor Arms Old Kings Head Black Cock Inn
Outdoor community facility	Broughton in Furness Tennis Club School playing field Wilson Park Recreation Ground Village Square Allotment Field
Educational Establishments	Broughton CofE School

Service / Facility Category	Details
High Speed Broadband	TBC
Bus Stops	
Bus Routes and Frequencies	No bus services
Railway Station	
Train Services	
Public rights of way	520060
Cycle routes	

Table 22: Broughton-in-Furness – Facilities and Services

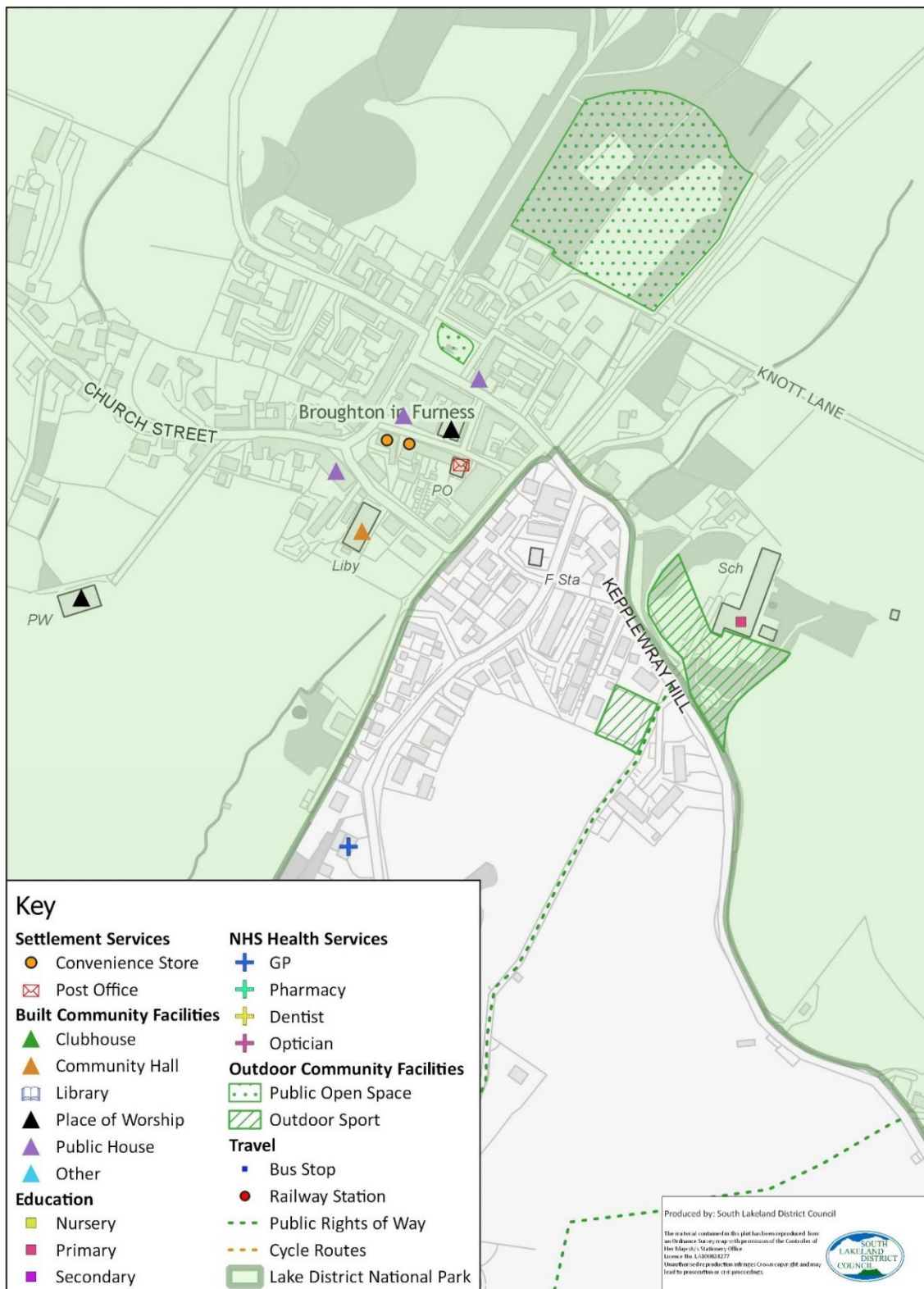


Figure 9: Broughton-in-Furness – Facilities and Services

Comments/Feedback on First Draft

4.1.2 Duddon Parish Council provided the following comments in response to the early draft of this document:

- The Square Café is a built community facility
- There is an allotment field which is an outdoor community facility
- Also other facilities not covered by the assessment include electric vehicle charging points and public conveniences.
- Concerns around infrastructure and services given that Broughton is a service centre include: poor broadband, poor mobile phone signal, no public transport, lack of parking, no bank or 24 hour cash machine.

Accessibility to Key Services

Settlement: Broughton in Furness LSOA: E01019344	Medium employment centre	Primary School	Secondary School	Further Education	GP	Hospital	Food Store	Town Centre	Average for all Services	Overall Rating
% population with 30 minutes public transport/ walking	0	96	0	0	0	0	0	0	12	Poor
Average travel time by public transport/ walking in minutes	97	17	78	96	57	98	63	104	76	Poor

Table 23: Broughton-in-Furness – Journey Time Statistics

4.2 Great and Little Urswick (LSC)

Population

4.2.1 The 2018 mid-year estimate of the population of Great/Little Urswick was 745 people. This is based on the combined population estimates for the following census output areas.

Census Output Area	2018 Population Estimate	Settlement
E00097980	317	Great/Little Urswick
E00097983	274	Great/Little Urswick

Census Output Area	2018 Population Estimate	Settlement
E00097981	214 (154)	Bardsea/ Great/Little Urswick (approx. 72% of properties in this area are within Gt/Little Urswick)
Total	745	Great/Little Urswick

Table 24: Great and Little Urswick - Population

Facilities and Services within the Settlement

Service / Facility Category	Details
Convenience Shop	
Post Office	
Health services	
Built community facility	Church Of St Mary And St Michael General Burgoyne Inn Urswick Recreation Hall Derby Arms (Closed and for sale)
Outdoor community facility	Low Furness CE Primary School playing field and sports pitches Play area
Educational Establishments	Low Furness CE Primary School
High Speed Broadband	TBC
Bus Stops	
Bus Routes and Frequencies	No bus services
Railway Station	
Train Services	
Public rights of way	580059 580060 580027 580028



Service / Facility Category	Details
	580029 580034 580039 580041
Cycle routes	

Table 25: Great and Little Urswick – Facilities and Services

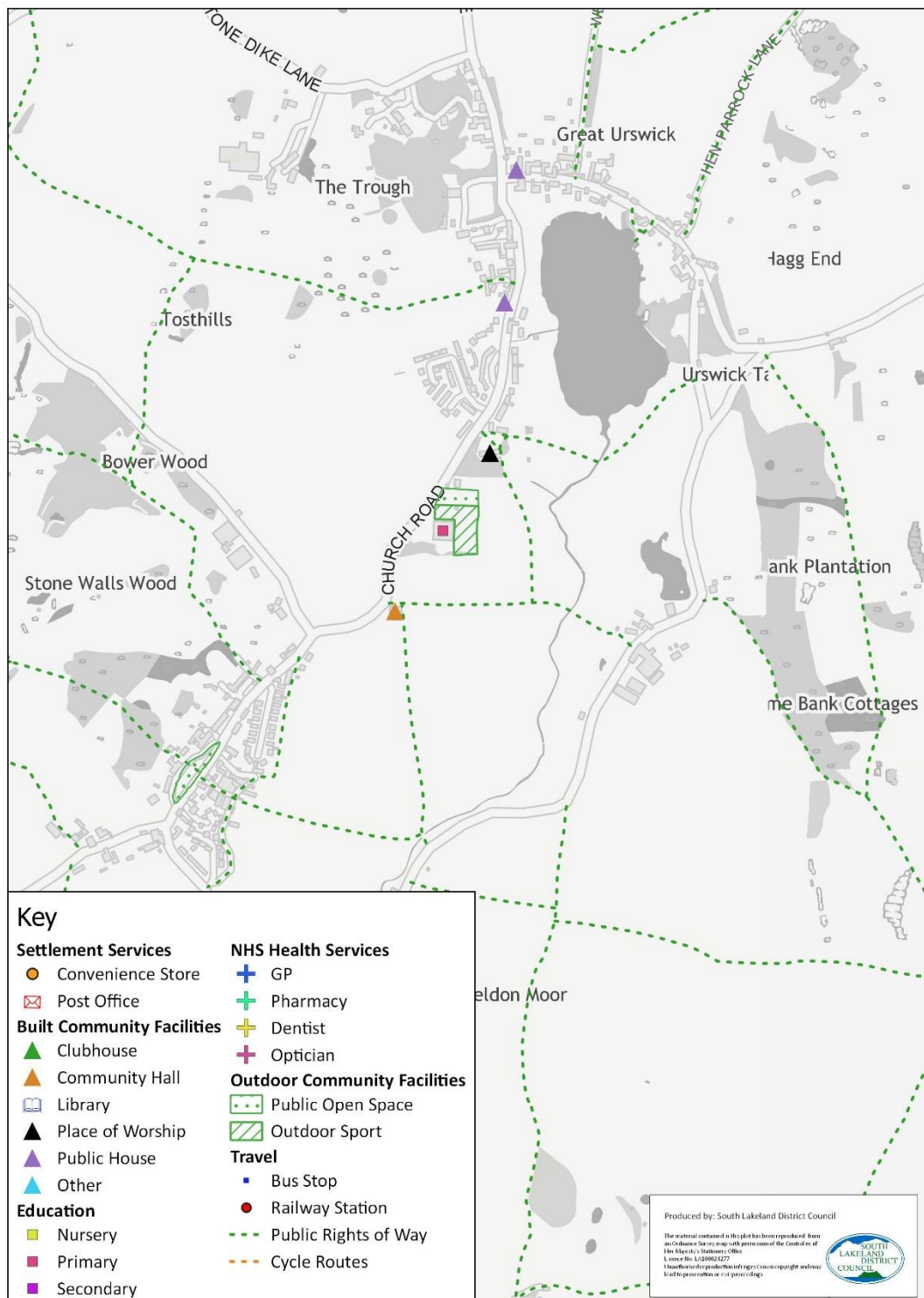


Figure 10: Great and Little Urswick – Facilities and Services

Accessibility to Key Services

Settlement: Great/Little Urswick LSOA: E01019379	Medium employment centre	Primary School	Secondary School	Further Education	GP	Hospital	Food Store	Town Centre	Average for all Services	Overall Rating
% population with 30 minutes public transport/ walking	40	100	26	25	40	0	40	40	39	Poor
Average travel time by public transport/ walking in minutes	35	12	34	36	44	74	30	43	39	Fair

Table 26: Great and Little Urswick – Journey Time Statistics

4.3 Greenodd/Penny Bridge (LSC)

Population

- 4.3.1 The 2018 mid-year estimate of the population of Greenodd/Penny Bridge was 469 people. This is based on the combined population estimates for the following census output areas.

Census Output Area	2018 Population Estimate	Settlement
E00097803	227	Greenodd/Penny Bridge
E00097806	241	Greenodd/Penny Bridge
Total	468	Greenodd/Penny Bridge

Table 27: Greenodd/Penny Bridge - Population

Facilities and Services within the Settlement

Service / Facility Category	Details
Convenience Shop	Greenodd Village Store and Post Office
Post Office	Post Office within village store (Open Monday afternoon, Tuesday morning and Friday morning)
Health services	
Built community facility	Greenodd Village Hall Ship Inn Britannia Inn

Service / Facility Category	Details
	St Mary's Church
Outdoor community facility	Penny Bridge CofE School sports field Crake Valley Croquet Club
Educational Establishments	Penny Bridge CofE School
High Speed Broadband	TBC
Bus Stops	cumdgwmw Shelter cumdgwpd Smithy Cottage cumdgwpm Smithy Cottage
Bus Routes and Frequencies	6 – Windermere to Barrow: Operates Mondays to Fridays approx. 4 services per day. Saturdays approx. 4 services per day. No Sunday service through Greenodd. X12 – Coniston to Ulverston: Mondays to Fridays approx. 3/4 services per day. No weekend services. X6 – Kendal to Barrow: Operates Mondays to Saturdays approx. hourly services. Sundays 4 services per day.
Railway Station	
Train Services	
Public rights of way	522002 522017
Cycle routes	Walney to Wear & Whitby (W2W) & Bay Cycleway

Table 28: Greenodd/Penny Bridge – Facilities and Services

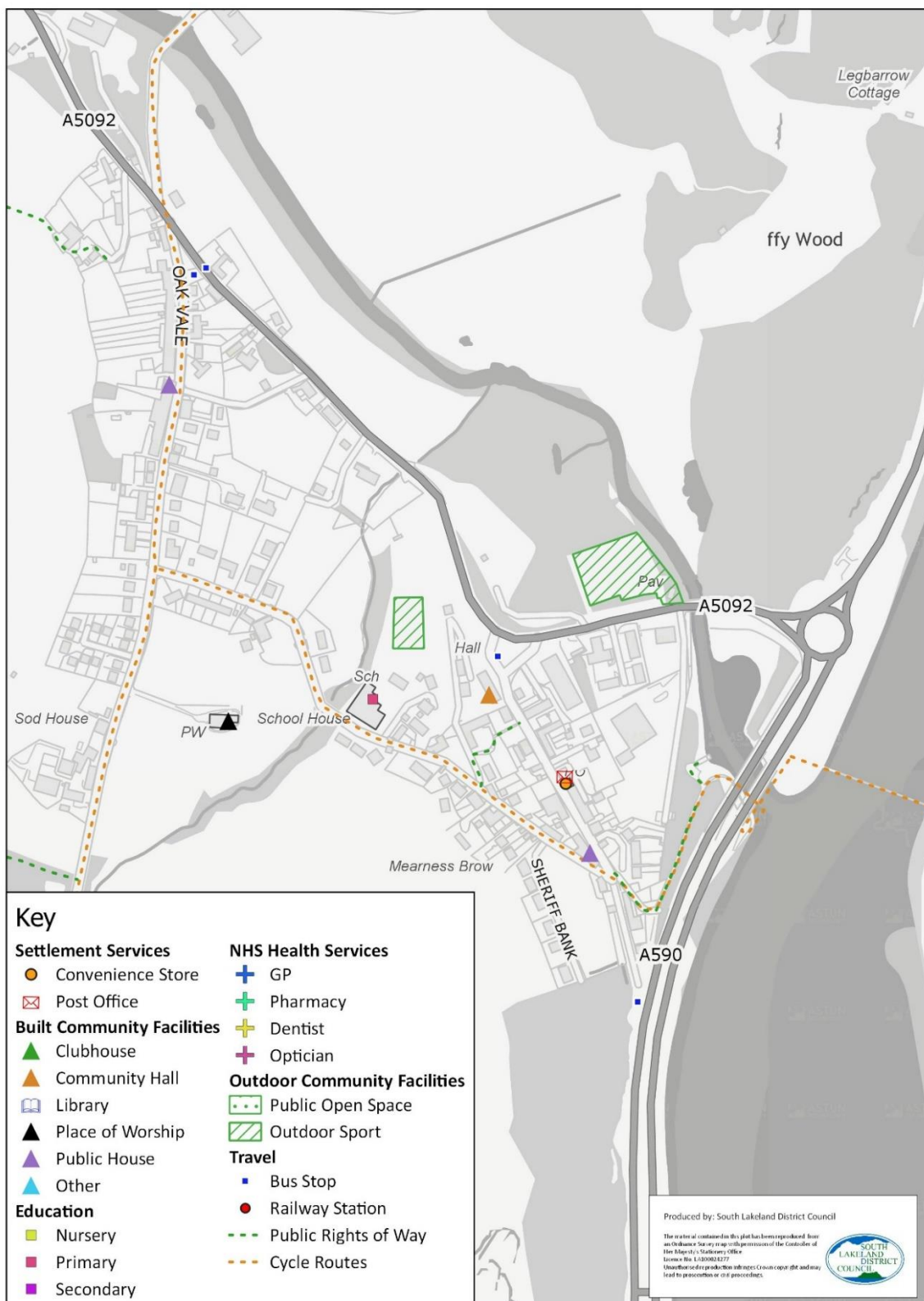


Figure 11: Greenodd/Penny Bridge – Facilities and Services

Comments/Feedback on First Draft

4.3.2 The local ward councillor provided the following comments in response to the early draft of this document:

- There is no Children's play area in the village.
- The bus stop for Ulverston in Penny Bridge is on the main road. In winter, children catch the school bus in the dark. The A5092 is badly lit here and there are many large heavy aggregate wagons going past at this time. There are also times when the school bus did not stop as the driver did not see the children in the bus stop.
- There is no Doctors surgery in Penny Bridge or Greenodd. There was one about 10 years ago and for some time there was a part time surgery at the Village Hall, Greenodd. This has stopped apart from collecting prescriptions on certain dates. With an aging population this creates difficulties as the nearest Surgeries are Ulverston or Haverthwaite.
- Main access to Penny Bridge and outlying areas is along the A5092. This is badly lit, busy, with fast moving traffic, often speeding. Many elderly people (75+) walk along this stretch of road and it is dangerous. Either improved footpath, reduced speed limit, lighting or traffic calming measures would be any improvement.
- Broadband speed is dire, especially in the more outlying areas such as Colton.
- For places to be considered sustainable locations they should have frequent bus services, better broadband, affordable and social housing for young families and controls on 2nd homes/holiday lets, local schools and employment prospects that provide a living wage and encourage young people to stay in the area.

Accessibility to Key Services

Settlement: Greenodd LSOA: E01019351	Medium employment centre	Primary School	Secondary School	Further Education	GP	Hospital	Food Store	Town Centre	Average for all Services	Overall Rating
% population with 30 minutes public transport/ walking	68	90	34	19	68	0	83	37	50	Fair

Settlement: Greenodd LSOA: E01019351	Medium employment centre	Primary School	Secondary School	Further Education	GP	Hospital	Food Store	Town Centre	Average for all Services	Overall Rating
Average travel time by public transport/ walking in minutes	28	17	34	36	29	65	22	29	32	Fair

Table 29: Greenodd/Penny Bridge – Journey Time Statistics

4.4 Kirkby-in-Furness (LSC)

Population

- 4.4.1 The 2018 mid-year estimate of the population of Kirkby-in-Furness was 921 people. This is based on the combined population estimates for the following census output areas.

Census Output Area	2018 Population Estimate	Settlement
E00097767	342	Kirkby-in-Furness
E00097769	252	Kirkby-in-Furness
E00097766	327	Kirkby-in-Furness
Total	921	Kirkby-in-Furness

Table 30: Kirkby-in-Furness - Population

Facilities and Services within the Settlement

Service / Facility Category	Details
Convenience Shop	Moorland Stores and Post Office
Post Office	Post Office
Health services	The Surgery Kirkby-In-Furness (Duddon Medical Practice)
Built community facility	St Cuthberts Church Beckside Rooms Kirkby In Furness Community Centre Ship Inn The Burlington Inn (currently closed and for sale)

Service / Facility Category	Details
Outdoor community facility	Kirkby Bowls Club Community Centre Recreation Ground and Sports Pitches
Educational Establishments	Burlington CofE School
High Speed Broadband	TBC
Bus Stops	cumdjtm Combe Crescent cumdjtp Burlington Inn
Bus Routes and Frequencies	X7 – Kirkby in Furness to Barrow/Ulverston: Only operates on a Wednesday, one service from Ulverston to Kirkby in Furness (and only runs in this direction), one service from Barrow to Kirkby in Furness.
Railway Station	Kirkby-in-Furness Railway Station
Train Services	Served by the Cumbrian Coast Line which runs between Carlisle and Barrow-in-Furness, and connects in with the Furness line at Barrow-in-Furness. Service frequency is generally 2 trains per hour.
Public rights of way	539056 539070 539053 539065 539066 539052 539064
Cycle routes	

Table 31: Kirkby-in-Furness – Facilities and Services

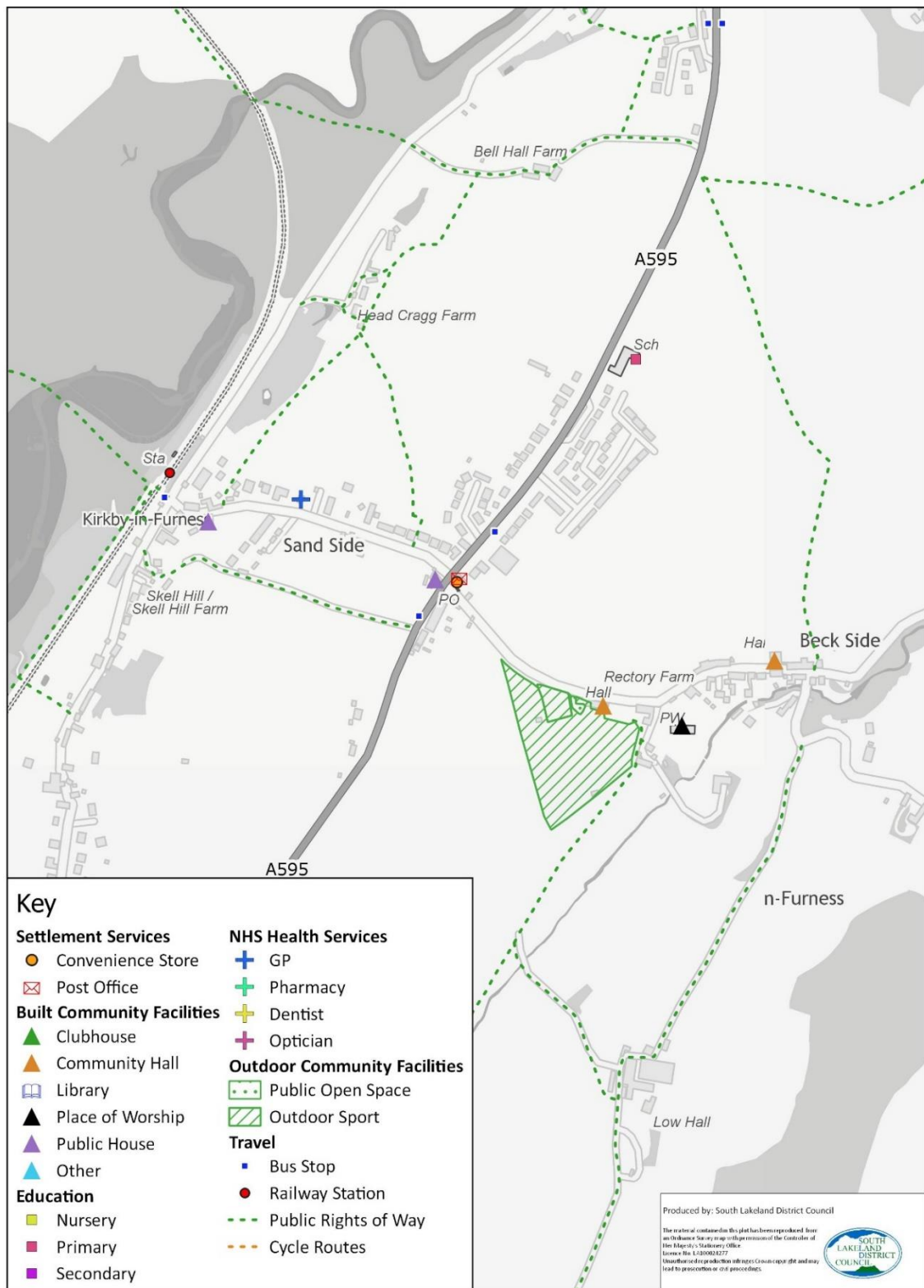


Figure 12: Kirkby-in-Furness – Facilities and Services

Accessibility to Key Services

Settlement: Kirkby in Furness LSOA: E01019345	Medium employment centre	Primary School	Secondary School	Further Education	GP	Hospital	Food Store	Town Centre	Average for all Services	Overall Rating
% population with 30 minutes public transport/ walking	0	100	38	24	100	0	100	24	48	Poor
Average travel time by public transport/ walking in minutes	36	10	34	40	11	40	18	39	29	Good

Table 32: Kirkby-in-Furness – Journey Time Statistics

4.5 Swarthmoor (LSC)

Population

- 4.5.1 The 2018 mid-year estimate of the population of Swarthmoor was 1,370 people. This is based on the combined population estimates for the following census output areas.

Census Output Area	2018 Population Estimate	Settlement
E00097977	525 (278)	Swarthmoor inc High Carley (approx. 53% of properties in this area are in Swarthmoor)
E00097978	232	Swarthmoor
E00097975	258	Swarthmoor
E00097976	369	Swarthmoor
E00097979	233	Swarthmoor
Total	1,370	Swarthmoor

Table 33: Swarthmoor – Population

Facilities and Services within the Settlement

Service / Facility Category	Details
Convenience Shop	
Post Office	
Health services	
Built community facility	Reading Room Methodist Church Miners Arms Pennington Memorial Hall
Outdoor community facility	Swarthmoor playground & adjacent land Trinkeld Avenue play area Park Road play area Swarthmoor Football Club Pennington School Playing Field
Educational Establishments	Pennington Nursery Pennington C of E School
High Speed Broadband	TBC
Bus Stops	cumdmajt Red Lion cumdmajw Rufus Lane cumdmajp Crossmoor
Bus Routes and Frequencies	6 – Croftlands to Barrow: Mondays to Saturdays approx. half hourly services. 6 – Windermere to Barrow: Mondays to Saturdays approx. 4 services per day. Sundays services either hourly or 2 hourly. X6 – Kendal to Barrow: Operates Mondays to Saturdays approx. hourly services. Sundays 4 services per day. X70 – South Ulverston to North Ulverston: Operates Mondays to Fridays, one service per day in one direction only.
Railway Station	
Train Services	



Service / Facility Category	Details
Public rights of way	563022
Cycle routes	Walney to Wear and Whitby (W2W)

Table 34: Swarthmoor – Facilities and Services

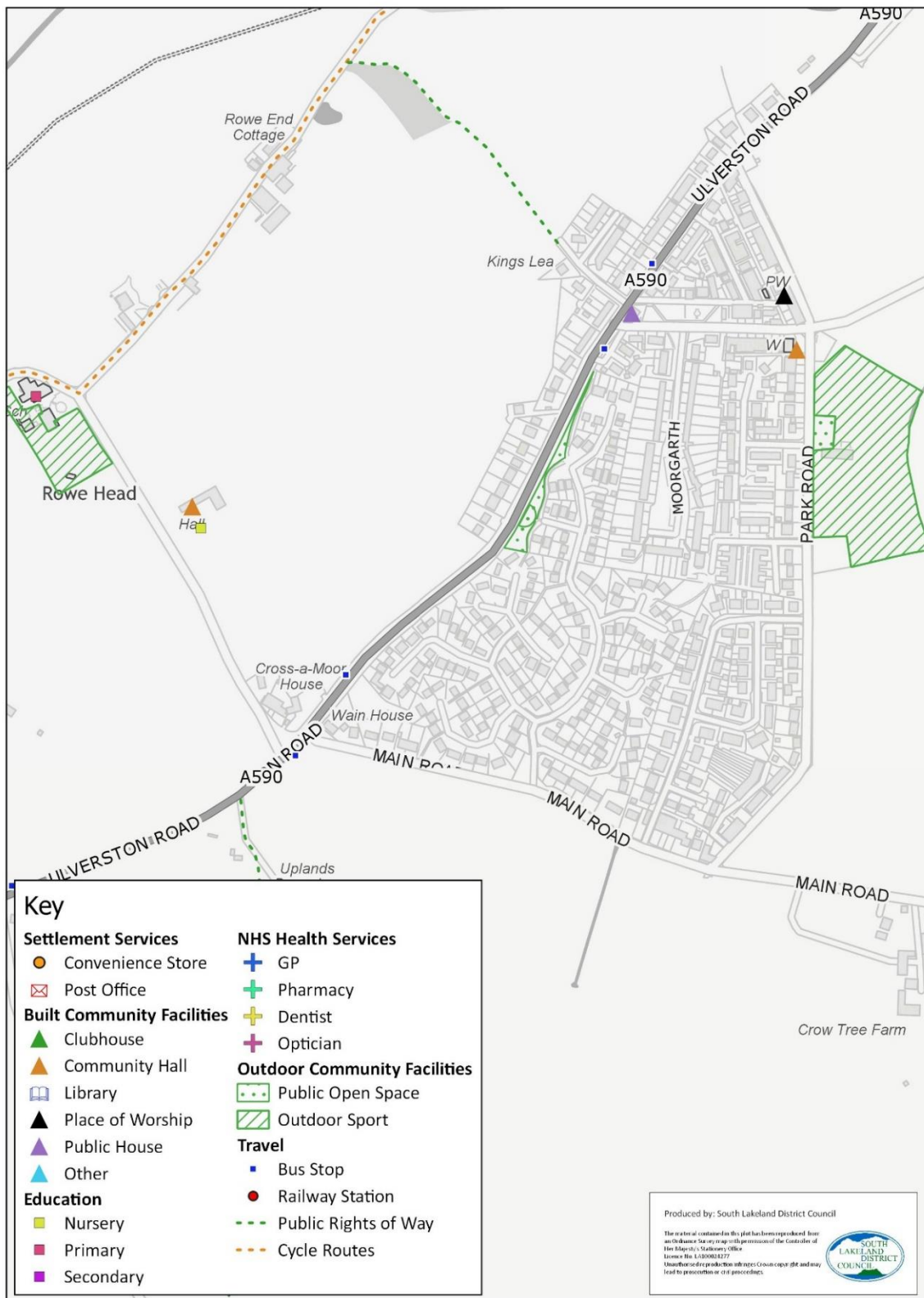


Figure 13: Swarthmoor – Facilities and Services

Accessibility to Key Services

Settlement: Swarthmoor LSOA: E01019378	Medium employment centre	Primary School	Secondary School	Further Education	GP	Hospital	Food Store	Town Centre	Average for all Services	Overall Rating
% population with 30 minutes public transport/ walking	100	100	100	100	100	55	100	100	94	Good
Average travel time by public transport/ walking in minutes	23	17	24	24	22	30	20	21	22	Good

Table 35: Swarthmoor – Journey Time Statistics

4.6 Bardsea (Rural Settlement)

Population

- 4.6.1 The 2018 mid-year estimate of the population of Bardsea was 296 people. This is based on the combined population estimates for the following census output areas.

Census Output Area	2018 Population Estimate	Settlement
E00097981	214 (60)	Bardsea/ Great/Little Urswick (approx. 28% of properties in this area are in Bardsea)
E00097984	236	Bardsea
Total	296	Bardsea

Table 36: Bardsea - Population

Facilities and Services within the Settlement

Service / Facility Category	Details
Convenience Shop	
Post Office	

Service / Facility Category	Details
Health services	
Built community facility	Bardsea Village Hall Holy Trinity Church The Ship Inn
Outdoor community facility	Children's play area Ulverston Golf Club (on edge of Bardsea)
Educational Establishments	
High Speed Broadband	TBC
Bus Stops	cumdtamw Whit Gill Lane end cumdmjpj Peel House cumdmjmt The Bradylls Arms cumdmjtj The Bradylls Arms
Bus Routes and Frequencies	11 – Barrow to Coniston: Operates on a Monday (2 services a day), Tuesday (1 service) and Friday (2 services). 11 – Ulverston to Barrow: Operates on a Monday (2 services a day), Tuesday and Friday (1 service).
Railway Station	
Train Services	
Public rights of way	
Cycle routes	Bay Cycleway

Table 37: Bardsea – Facilities and Services

Accessibility to Key Services

Settlement: Bardsea LSOA: E01019379	Medium employment centre	Primary School	Secondary School	Further Education	GP	Hospital	Food Store	Town Centre	Average for all Services	Overall Rating
% population with 30 minutes public transport/ walking	40	100	26	25	40	0	40	40	39	Poor
Average travel time by public transport/ walking in minutes	35	12	34	36	44	74	30	43	39	Fair

Table 38: Bardsea – Journey Time Statistics

4.7 Baycliff (Rural Settlement)

Population

- 4.7.1 The 2018 mid-year estimate of the population of Baycliff was 355 people. This is based on the combined population estimates for the following census output areas.

Census Output Area	2018 Population Estimate	Settlement
E00097971	355	Baycliff (including Aldingham)
Total	355	Baycliff

Table 39: Baycliff - Population

Facilities and Services within the Settlement

Service / Facility Category	Details
Convenience Shop	
Post Office	Baycliff Post Office
Health services	
Built community facility	The Fishermans Arms Hotel The Farmers (Public House)

Service / Facility Category	Details
Outdoor community facility	Play area and amenity green space west of Fishermans Arms Hotel Amenity green space adjacent Greenside Cottage (small triangular green with trees and bench)
Educational Establishments	
High Speed Broadband	TBC
Bus Stops	cumdgmdw Shawfield Road cumdgmga Swinestead Lane End cumdgmja Fishermans Arms cumdtapd Clattern Cottage
Bus Routes and Frequencies	11 – Barrow to Coniston: Operates on a Monday (2 services a day), Tuesday (1 service) and Friday (2 services). 11 – Ulverston to Barrow: Operates on a Monday (2 services a day), Tuesday and Friday (1 service).
Railway Station	
Train Services	
Public rights of way	501038 501029
Cycle routes	

Table 40: Baycliff – Journey Time Statistics

Accessibility to Key Services

Settlement: Baycliff LSOA: E01019379	Medium employment centre	Primary School	Secondary School	Further Education	GP	Hospital	Food Store	Town Centre	Average for all Services	Overall Rating
% population with 30 minutes public transport/ walking	40	100	26	25	40	0	40	40	39	Poor
Average travel time by public transport/ walking in minutes	35	12	34	36	44	74	30	43	39	Fair

Table 41: Baycliff – Journey Time Statistics

4.8 Gleaston (Rural Settlement)

Population

- 4.8.1 The 2018 mid-year estimate of the population of Gleaston was 214 people. This is based on the combined population estimates for the following census output areas.

Census Output Area	2018 Population Estimate	Settlement
E00097972	346 (138)	Gleaston/ Scales (approx 40% of the properties in this area are in Gleaston)
E00097973	224 (76)	Gleaston/Leece (approx. 34% of the properties in this area are in Gleaston)
Total	214	Gleaston

Table 42: Gleaston - Population

Facilities and Services within the Settlement

Service / Facility Category	Details
Convenience Shop	

Service / Facility Category	Details
Post Office	
Health services	
Built community facility	Village Hall
Outdoor community facility	Gleaston Green Football pitch Play area
Educational Establishments	
High Speed Broadband	TBC
Bus Stops	
Bus Routes and Frequencies	
Railway Station	
Train Services	
Public rights of way	501040 501010 501039 501011
Cycle routes	Bay Cycleway

Table 43: Gleaston – Facilities and Services

Accessibility to Key Services

Settlement: Gleaston LSOA: E01019380	Medium employment centre	Primary School	Secondary School	Further Education	GP	Hospital	Food Store	Town Centre	Average for all Services	Overall Rating
% population with 30 minutes public transport/ walking	25	42	22	23	24	0	24	0	20	Poor
Average travel time by public transport/ walking in minutes	51	31	45	63	41	61	37	64	49	Fair

Table 44: Gleaston – Journey Time Statistics

4.9 Leece (Rural Settlement)

Population

- 4.9.1 The 2018 mid-year estimate of the population of Leece was 172 people. This is based on the combined population estimates for the following census output areas.

Census Output Area	2018 Population Estimate	Settlement
E00097974	278 (25)	Leece/Newbiggin/ /Roosebeck
E00097973	224 (147)	Gleaston/Leece (approx. 66% of the properties in this area are in Leece)
Total	172	Leece

Table 45: Leece - Population

Facilities and Services within the Settlement

Service / Facility Category	Details
Convenience Shop	
Post Office	

Service / Facility Category	Details
Health services	
Built community facility	Village Hall
Outdoor community facility	Leece Tarn and surrounding land Play area
Educational Establishments	
High Speed Broadband	TBC
Bus Stops	
Bus Routes and Frequencies	
Railway Station	
Train Services	
Public rights of way	501012 501007 501014
Cycle routes	Bay Cycleway

Table 46: Leece – Facilities and Services

Accessibility to Key Services

Settlement: Leece LSOA: E01019380	Medium employment centre	Primary School	Secondary School	Further Education	GP	Hospital	Food Store	Town Centre	Average for all Services	Overall Rating
% population with 30 minutes public transport/ walking	25	42	22	23	24	0	24	0	20	Poor

Settlement: Leece LSOA: E01019380	Medium employment centre	Primary School	Secondary School	Further Education	GP	Hospital	Food Store	Town Centre	Average for all Services	Overall Rating
Average travel time by public transport/ walking in minutes	51	31	45	63	41	61	37	64	49	Fair

Table 47: Leece – Journey Time Statistics

4.10 Lindal-in-Furness (Rural Settlement)

Population

- 4.10.1 The 2018 mid-year estimate of the population of Lindal-in-Furness was 761 people. This is based on the combined population estimates for the following census output areas.

Census Output Area	2018 Population Estimate	Settlement
E00096778	455	Lindal-in-Furness
E00096779	306	Lindal-in-Furness
Total	761	Lindal-in-Furness

Table 48: Lindal-in-Furness - Population

Facilities and Services within the Settlement

Service / Facility Category	Details
Convenience Shop	
Post Office	
Health services	
Built community facility	St Peter's Church Railway Inn Bee Hive Inn
Outdoor community facility	Lindal Cricket Club Lindal Bowling Club

Service / Facility Category	Details
Educational Establishments	Lindal and Marton Primary School
High Speed Broadband	TBC
Bus Stops	cumamgtw Anchor Hotel cumamgwa The Anchor cumamgwj Pennington Lane cumamgwm Pennington Lane
Bus Routes and Frequencies	6 – Croftlands to Barrow: Mondays to Saturdays approx. half hourly services. 6 – Windermere to Barrow: Mondays to Saturdays approx. 4 services per day. Sundays services either hourly or 2 hourly. X6 – Kendal to Barrow: Operates Mondays to Saturdays approx. hourly services. Sundays 4 services per day.
Railway Station	
Train Services	
Public rights of way	602044
Cycle routes	Walney to Wear and Whitby (W2W)

Table 49: Lindal-in-Furness – Facilities and Services

Accessibility to Key Services

Settlement: Lindal-in-Furness LSOA: E01019146	Medium employment centre	Primary School	Secondary School	Further Education	GP	Hospital	Food Store	Town Centre	Average for all Services	Overall Rating
% population with 30 minutes public transport/ walking	100	100	100	52	100	100	100	100	94	Good
Average travel time by public transport/ walking in minutes	17	7	16	30	13	24	10	23	18	Good

Table 50: Lindal-in-Furness – Journey Time Statistics

4.11 Loppergarth (Rural Settlement)

Population

- 4.11.1 The 2018 mid-year estimate of the population of Loppergarth was 59 people. This is based on the population estimate for the following census output areas.

Census Output Area	2018 Population Estimate	Settlement
E00097809	367 (59)	Loppergarth, Pennington and wider rural area to north. (approx. 16% of properties are in Loppergarth)
Total	59	Loppergarth

Table 51: Loppergarth - Population

Facilities and Services within the Settlement

Service / Facility Category	Details
Convenience Shop	
Post Office	
Health services	

Service / Facility Category	Details
Built community facility	Wellington Inn
Outdoor community facility	
Educational Establishments	
High Speed Broadband	TBC
Bus Stops	
Bus Routes and Frequencies	
Railway Station	
Train Services	
Public rights of way	563004
Cycle routes	Walney to Wear and Whitby (W2W)

Table 52: Loppergarth – Facilities and Services

Accessibility to Key Services

Settlement: Loppergarth LSOA: E01019351	Medium employment centre	Primary School	Secondary School	Further Education	GP	Hospital	Food Store	Town Centre	Average for all Services	Overall Rating
% population with 30 minutes public transport/ walking	68	90	34	19	68	0	83	37	50	Fair
Average travel time by public transport/ walking in minutes	28	17	34	36	29	65	22	29	32	Fair

Table 53: Loppergarth – Journey Time Statistics

4.12 Newbiggin (Rural Settlement)

Population

- 4.12.1 The 2018 mid-year estimate of the population of Newbiggin was 89 people. This is based on the population estimate for the following census output area.

Census Output Area	2018 Population Estimate	Settlement
E00097974	278 (89)	Leece/Newbiggin/ Roosebeck (approx 32% of properties in this area are in Newbiggin)
Total	89	Newbiggin

Table 54: Newbiggin - Population

Facilities and Services within the Settlement

Service / Facility Category	Details
Convenience Shop	
Post Office	
Health services	

Service / Facility Category	Details
Built community facility	
Outdoor community facility	
Educational Establishments	
High Speed Broadband	TBC
Bus Stops	cumdgmgp Road End cumdtapj Malt Kiln Road
Bus Routes and Frequencies	11 – Barrow to Coniston: Operates on a Monday (2 services a day), Tuesday (1 service) and Friday (2 services). 11 – Ulverston to Barrow: Operates on a Monday (2 services a day), Tuesday and Friday (1 service).
Railway Station	
Train Services	
Public rights of way	501010 501017 501016
Cycle routes	

Table 55: Newbiggin – Facilities and Services

Accessibility to Key Services

Settlement: Newbiggin LSOA: E01019380	Medium employment centre	Primary School	Secondary School	Further Education	GP	Hospital	Food Store	Town Centre	Average for all Services	Overall Rating
% population with 30 minutes public transport/ walking	25	42	22	23	24	0	24	0	20	Poor
Average travel time by public transport/ walking in minutes	51	31	45	63	41	61	37	64	49	Fair

Table 56: Newbiggin – Journey Time Statistics

4.13 Scales (Rural Settlement)

Population

- 4.13.1 The 2018 mid-year estimate of the population of Scales was 208 people. This is based on the population estimate for the following census output area, which has been adjusted to take account of the properties in this area which are within Gleaston.

Census Output Area	2018 Population Estimate	Settlement
E00097972	346 (208)	Gleaston/Scales (approx. 40% of the properties in this census output area are in Gleaston, so population estimate reduced by 40%)
Total	208	Scales

Table 57: Scales - Population

Facilities and Services within the Settlement

Service / Facility Category	Details
Convenience Shop	

Service / Facility Category	Details
Post Office	
Health services	
Built community facility	
Outdoor community facility	Play area Scales green
Educational Establishments	
High Speed Broadband	TBC
Bus Stops	
Bus Routes and Frequencies	
Railway Station	
Train Services	
Public rights of way	501031 501033 501030
Cycle routes	Bay Cycleway

Table 58: Scales – Facilities and Services

Accessibility to Key Services

Settlement: Scales LSOA: E01019380	Medium employment centre	Primary School	Secondary School	Further Education	GP	Hospital	Food Store	Town Centre	Average for all Services	Overall Rating
% population with 30 minutes public transport/ walking	25	42	22	23	24	0	24	0	20	Poor
Average travel time by public transport/ walking in minutes	51	31	45	63	41	61	37	64	49	Fair

Table 59: Scales – Journey Time Statistics

4.14 Stainton with Adgarley (Rural Settlement)

Population

- 4.14.1 The 2018 mid-year estimate of the population of Stainton and Adgarley was 242 people. This is based on the combined population estimates for the following census output areas.

Census Output Area	2018 Population Estimate	Settlement
E00097982	242	Stainton and Adgarley
Total	242	Stainton and Adgarley

Table 60: Stainton with Adgarley - Population

Facilities and Services within the Settlement

Service / Facility Category	Details
Convenience Shop	
Post Office	
Health services	

Service / Facility Category	Details
Built community facility	The Stagger Inn
Outdoor community facility	The Green
Educational Establishments	
High Speed Broadband	TBC
Bus Stops	
Bus Routes and Frequencies	
Railway Station	
Train Services	
Public rights of way	580006
Cycle routes	

Table 61: Stainton with Adgarley – Facilities and Services

Accessibility to Key Services

Settlement: Stainton with Adgarley LSOA: E01019380	Medium employment centre	Primary School	Secondary School	Further Education	GP	Hospital	Food Store	Town Centre	Average for all Services	Overall Rating
% population with 30 minutes public transport/ walking	25	42	22	23	24	0	24	0	20	Poor
Average travel time by public transport/ walking in minutes	51	31	45	63	41	61	37	64	49	Fair

Table 62: Stainton with Adgarley – Journey Time Statistics

5 Draft Assessment – Rural Kendal and the East Settlements

5.1 Kirkby Lonsdale (KSC)

Population

- 5.1.1 The 2018 mid-year estimate of the population of Kirkby Lonsdale was 1,603 people. This is based on the combined population estimates for the following census output areas.

Census Output Area	2018 Population Estimate	Settlement
E00097946	246	Kirkby Lonsdale
E00097947	311	Kirkby Lonsdale
E00097945	256	Kirkby Lonsdale
E00097943	308	Kirkby Lonsdale
E00097944	389 (152)	Kirkby Lonsdale inc High Biggins and rural area (approx. 39% of properties in this area are in Kirkby Lonsdale)
E00097942	330	Kirkby Lonsdale
Total	1,603	Kirkby Lonsdale

Table 63: Kirkby Lonsdale - Population

Facilities and Services within the Settlement

Service / Facility Category	Details
Convenience Shop	Spar Borders Greengrocers Booths Supermarket
Post Office	Post Office
Health services	Cottage Dental Practice Lunesdale Surgery Collinge Opticians
Built community facility	Kirkby Lonsdale Library St Mary's Church St Joseph's Church Methodist Church The Orange Tree Hotel

Service / Facility Category	Details																
	<p>The Royal Barn Royal Hotel Snooty Fox Tavern Red Dragon Inn Sun Inn Kings Arms</p>																
Outdoor community facility	<p>Kirkby Lonsdale Bowling Club Kirkby Lonsdale Football ground Queen Elizabeth School - tennis courts Queen Elizabeth School - grass track Queen Elizabeth School - all weather pitch St Mary's CofE primary school Kirkby Lonsdale School pitches Kirkby Lonsdale River Lune Path Tram Lane Recreation Ground & Play Area Kirkby Lonsdale Market Square Green Square Kirkby Lonsdale Rugby Club Sports Pitch to south of A65 Kirkby Lonsdale Football Ground Kirkby Lonsdale Cricket Ground Jubilee Park Lunesdale Park</p>																
Educational Establishments	<p>St Mary's CofE Primary School Queen Elizabeth School Queen Elizabeth Studio School</p>																
High Speed Broadband	TBC																
Bus Stops	<table> <tr> <td>cumdjtpa</td><td>Queen Elizabeth School</td></tr> <tr> <td>cumdwmdt</td><td>Lunefield Drive</td></tr> <tr> <td>cumdwjta</td><td>Lunefield Drive</td></tr> <tr> <td>cumdjtpg</td><td>Queen Elizabeth School</td></tr> <tr> <td>cumdpdgd</td><td>Kirkby Lonsdale Booth's</td></tr> <tr> <td>cumdjtpd</td><td>Market Place</td></tr> <tr> <td>cumdjtmw</td><td>Abbotsgate</td></tr> <tr> <td>cumdjmt</td><td>New Road</td></tr> </table>	cumdjtpa	Queen Elizabeth School	cumdwmdt	Lunefield Drive	cumdwjta	Lunefield Drive	cumdjtpg	Queen Elizabeth School	cumdpdgd	Kirkby Lonsdale Booth's	cumdjtpd	Market Place	cumdjtmw	Abbotsgate	cumdjmt	New Road
cumdjtpa	Queen Elizabeth School																
cumdwmdt	Lunefield Drive																
cumdwjta	Lunefield Drive																
cumdjtpg	Queen Elizabeth School																
cumdpdgd	Kirkby Lonsdale Booth's																
cumdjtpd	Market Place																
cumdjtmw	Abbotsgate																
cumdjmt	New Road																
Bus Routes and Frequencies	<p>581 – Kirkby Lonsdale to Settle: Operates Mondays to Saturdays, 7 services per day each direction (between hourly and 2 hourly frequency) 582 – Kirkby Lonsdale to Lancaster:</p>																

Service / Facility Category	Details
	<p>Operates Mondays to Fridays, 7 services per day each direction (between hourly and 2 hourly frequency). Operates Saturdays on a 2 hourly frequency (6 services).</p> <p>81 – Ingleton/Kirkby Lonsdale to Lancaster: Operates Mondays to Fridays approx. 6 services per day (in each direction), 3 of which go as far as Ingleton.</p> <p>567 – Kirkby Lonsdale to Kendal: Operates Mondays to Fridays approx. 6/7 services a day (in each direction). Saturdays 4 services.</p> <p>81A – Kirkby Lonsdale to Lancaster Sunday Service: Approx. 4/5 services in each direction.</p> <p>81B - Kirkby Lonsdale to Lancaster Sunday Service: Approx. 4/5 services in each direction.</p> <p>551 – Arnsdale to Kirkby Lonsdale: Operates Thursday only 1 service per day (in each direction)</p> <p>Also a range of services that operate on school days at the start and end of school day.</p>
Railway Station	
Train Services	
Public rights of way	540001 540004 540005 540006 540025 540029 540030 540031 540003 540008
Cycle routes	

Table 64: Kirkby Lonsdale – Facilities and Services

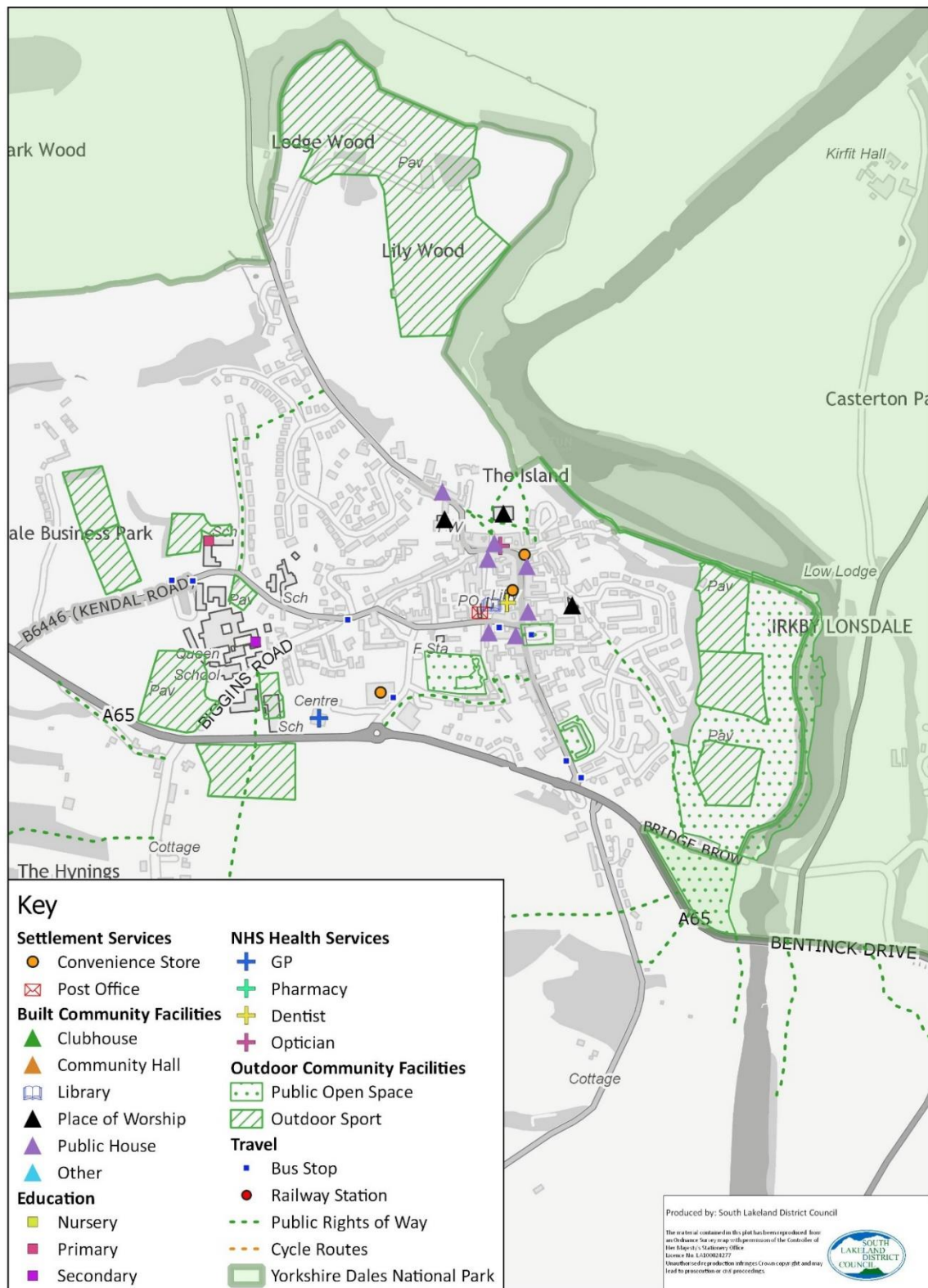


Figure 14: Kirkby Lonsdale – Facilities and Services

Accessibility to Key Services

Settlement: Kirkby Lonsdale LSOA: E01019372	Medium employment centre	Primary School	Secondary School	Further Education	GP	Hospital	Food Store	Town Centre	Average for all Services	Overall Rating
% population with 30 minutes public transport/ walking	100	100	100	100	100	0	100	100	88	Good
Average travel time by public transport/ walking in minutes	3	9	7	7	7	38	4	4	10	Excellent

Table 65: Kirkby Lonsdale – Journey Time Statistics

5.2 Milnthorpe (LSC)

Population

- 5.2.1 The 2018 mid-year estimate of the population of Milnthorpe was 1,681 people. This is based on the combined population estimates for the following census output areas.

Census Output Area	2018 Population Estimate	Settlement
E00097997	324	Milnthorpe
E00097998	230	Milnthorpe
E00097996	374 (191)	Milnthorpe and part of Ackenthwaite (approx. 51% of properties in this area are in Milnthorpe)
E00097994	353	Milnthorpe
E00097995	328	Milnthorpe
E00097993	255	Milnthorpe
Total	1,681	

Table 66: Milnthorpe – Population

Facilities and Services within the Settlement

Service / Facility Category	Details
Convenience Shop	Spar McColls at Milnthorpe Booths Supermarket
Post Office	Post Office
Health services	Stoneleigh GP Surgery S & L Budd Opticians Green Dental Partnership Hordale Dental Surgery Park View Dental Surgery
Built community facility	Milnthorpe Library Church of Christ the King St Thomas' Church M:Hub Bulls Head Hotel Milnthorpe Cricket Club Pavillion
Outdoor community facility	Kirkhead Allotments Chestnut Park Play Area Dallam Chase Play Area Chestnut Way Play Area Park Road Recreation Ground / Milnthorpe Cricket Club Milnthorpe Playing Field Play Area Milnthorpe bowling club Allotment Gardens at corner of Grisleymires Lane Dallam School all weather pitch
Educational Establishments	Milnthorpe Primary School Dallam School (secondary) Joey's Nursery
High Speed Broadband	TBC
Bus Stops	cumdmamw Grisleymires Lane cumdmamg Methodist Church cumdmamd Grisleymires Lane cumdmapm The Square cumdmamj The Strands cumdpmgt Dallam School cumdmamp Chestnut Park cumdmamt Methodist Church

Service / Facility Category	Details
	<p>cumdmajw Chestnut Park</p> <p>cumdmajm The Square</p> <p>cumdmapa Top of Church Street</p> <p>cumdmagd Top of Church Street</p>
Bus Routes and Frequencies	<p>555 – Keswick to Lancaster: Operates Mondays to Saturdays with an approx. hourly service (each direction) with additional Saturday summer services. Sundays approx. 2 hourly services (5 services in day)</p> <p>755 – Bowness/Kendal to Morecambe: Mondays to Sundays with 4 services per day.</p> <p>550 – Morecambe to Milnthorpe: Operates Tuesday only, 1 service.</p> <p>551 – Arnsdale to Kirkby Lonsdale: Operates Thursday only 1 service per day (in each direction)</p> <p>552 – Arnsdale to Kendal: Operates Wednesday and Friday only. 1 service per day.</p> <p>Also some school day services to serve Kirkby Lonsdale school.</p>
Railway Station	
Train Services	
Public rights of way	<p>556009</p> <p>556010</p> <p>556011</p> <p>556006</p>
Cycle routes	National Cycle Network Route 6

Table 67: Milnthorpe – Facilities and Services

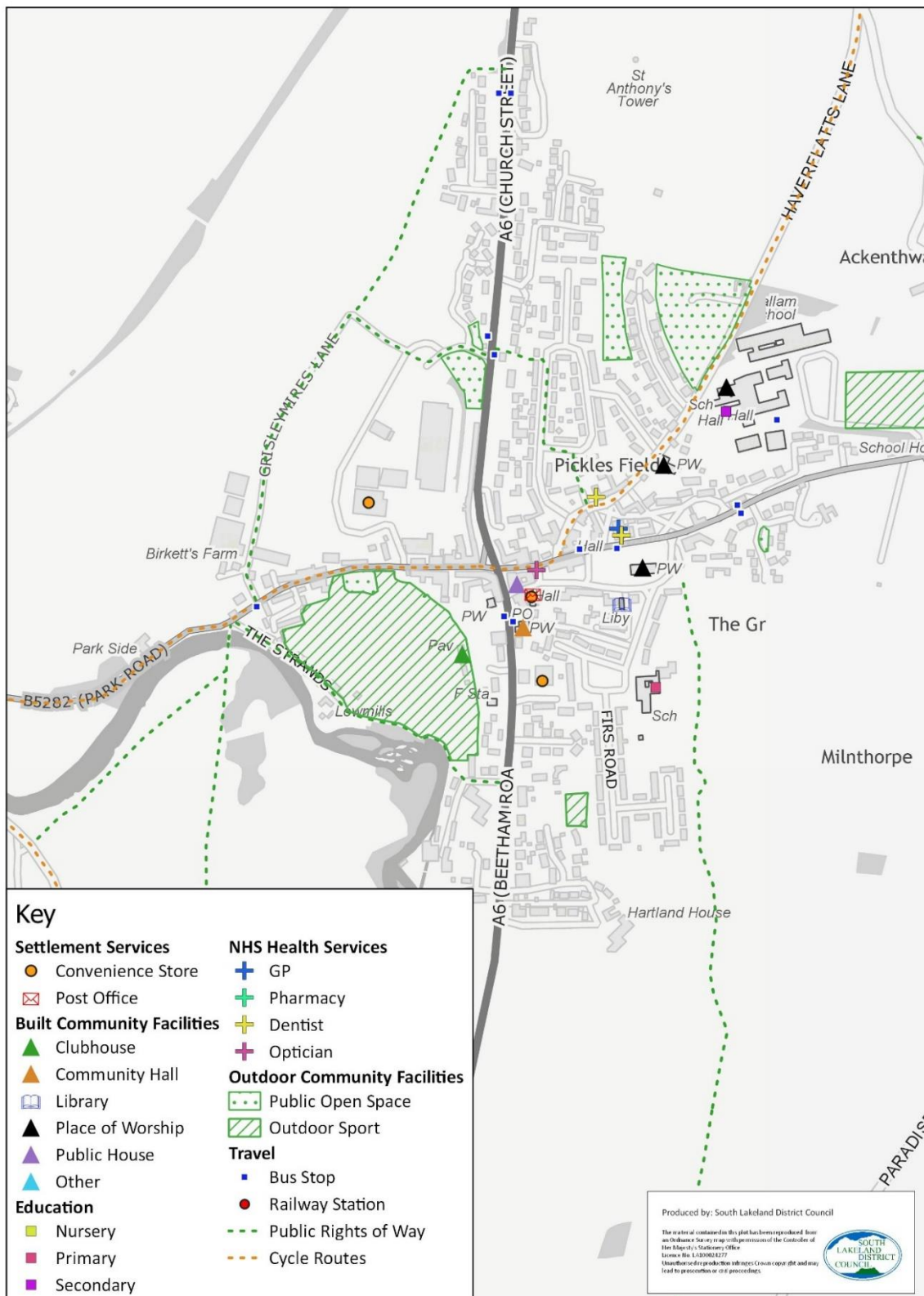


Figure 15: Milnthorpe – Facilities and Services

Comments/Feedback on First Draft

5.2.2 The local ward councilor provided the following comments in response to the early draft of this document:

- Facilities generally very good although there is a need for a new health centre in Milnthorpe. The Stoneleigh surgery building is no longer fit for purpose.
- If there is to be an expansion of housing in Milnthorpe a new health centre and a better road network will be critical.
- Broadband infrastructure is generally poor apart from where B4RN is being rolled out in places like Carr Bank and Storth.
- Mobile phone coverage is poor away from the flanks of the estuary.

Accessibility to Key Services

Settlement: Milnthorpe LSOA: E01019382	Medium employment centre	Primary School	Secondary School	Further Education	GP	Hospital	Food Store	Town Centre	Average for all Services	Overall Rating
% population with 30 minutes public transport/ walking	100	100	74	100	100	0	100	57	79	Good
Average travel time by public transport/ walking in minutes	6	8	28	26	5	46	5	31	19	Good

Table 68: Milnthorpe – Journey Time Statistics

5.3 Burneside (LSC)

Population

5.3.1 The 2018 mid-year estimate of the population of Burneside was 1,063 people. This is based on the combined population estimates for the following census output areas.

Census Output Area	2018 Population Estimate	Settlement
E00097770	253	Burneside
E00097776	134	Burneside
E00097775	197	Burneside
E00097772	250	Burneside

Census Output Area	2018 Population Estimate	Settlement
E00097771	229	Burneside
Total	1063	Burneside

Table 69: Burneside - Population

Facilities and Services within the Settlement

Service / Facility Category	Details
Convenience Shop	Burneside Convenience Store (Premier)
Post Office	Part time post office run from the church 3 days a week.
Health services	
Built community facility	Bryce Institute Saint Oswald's Church Jolly Anglers Inn Burneside Cricket Clubhouse
Outdoor community facility	Burneside Cricket Ground Tennis Courts Burneside Bowling Club Burneside Football Club Ground Recreation Field Village Playground Hall Park Play Areas Land adjacent River Kent (Amenity and picnic area)
Educational Establishments	St Oswald's Primary School
High Speed Broadband	B4RN superfast broadband available in Strickland Roger parish, so covering the part of Burneside east of the River Kent.
Bus Stops	cumdgppw St Oswald's Church cumdgpmw Holme Houses cumdgptg Ford Bridge cumdgptj Sprint Holme cumdgptm Sprint Holme cumdgptp Carling Hill cumdgpta St Oswalds Church cumdgptd Vicarage

Service / Facility Category	Details
Bus Routes and Frequencies	<p>45 – Kendal Circular: Operates Mondays to Saturdays approx. hourly.</p> <p>445 – Kendal school service term time only.</p>
Railway Station	Burneside Railway Station
Train Services	<p>Served by the Lakes Line which runs between Windermere and Oxenholme the Lake District and provides connections to the West Coast Main Line at Oxenholme.</p> <p>Service frequency is generally around 1 train per hour.</p>
Public rights of way	<p>574009 574008 575002 575001 Dales Way</p>
Cycle routes	National Cycle Route 6

Table 70: Burneside – Facilities and Services

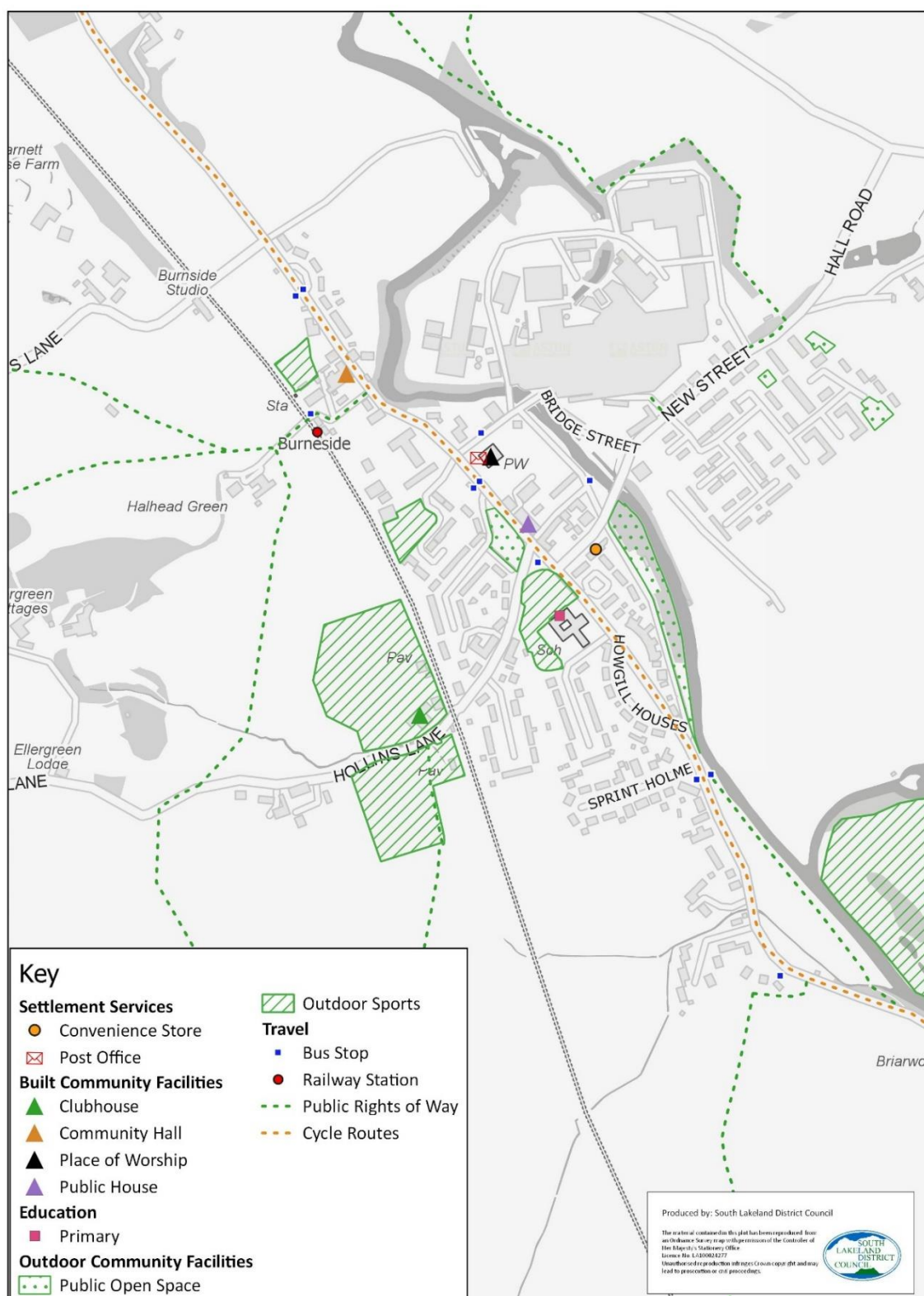


Figure 16: Burneside – Facilities and Services

Comments/Feedback on First Draft

5.3.2 Burneside Parish provided the following comments in response to the early draft of this document:

- Convenience Stores- There is also the Bakery on Steeles Row.
- Post Office - The Parish is served by a Post Office that is run out of the Church 3 days a week.
- There is now also Handsome Brewery in Bowston that is used by the community when open.
- There is community land on Potter Fell that is managed by the Parish Council. It is near the tarn and marked by boundary stones.
- B4RN- Broadband for the Rural North is now in place and working in Strickland Roger. This the Parish that is the Potter Fell side of the river Kent. B4RN is not in place in Strickland Ketel.
- Facilities have remained pretty constant and unchanged. B4RN has been a welcome addition to the Parish, as has the Brewery.

Accessibility to Key Services

Settlement: Burneside LSOA: E01019346	Medium employment centre	Primary School	Secondary School	Further Education	GP	Hospital	Food Store	Town Centre	Average for all Services	Overall Rating
% population with 30 minutes public transport/ walking	74	77	29	31	74	0	74	53	52	Fair
Average travel time by public transport/ walking in minutes	22	17	44	44	35	60	32	38	37	Fair

Table 71: Burneside: Journey Time Statistics

5.4 Burton in Kendal (LSC)

Population

5.4.1 The 2018 mid-year estimate of the population of Burton-in-Kendal was 1,384 people. This is based on the combined population estimates for the following census output areas.

Census Output Area	2018 Population Estimate	Settlement
E00097779	283	Burton-in-Kendal (includes some wider rural areas to the west)
E00097778	277	Burton-in-Kendal
E00097783	246	Burton-in-Kendal
E00097781	267	Burton-in-Kendal
E00097782	311	Burton-in-Kendal
Total	1,384	Burton-in-Kendal

Table 72: Burton in Kendal - Population

Facilities and Services within the Settlement

Service / Facility Category	Details
Convenience Shop	Village Store
Post Office	Burton Post Office
Health services	Dr J H Gorrigan & Partners GP
Built community facility	St James Church The Memorial Hall Kings Arms Hotel
Outdoor community facility	Burton in Kendal Tennis Club Burton Bowling Club Boon Town play area Burton Morewood School playing field
Educational Establishments	Burton Morewood CofE Primary School
High Speed Broadband	TBC
Bus Stops	cumdgat The Square cumdgtad The Square cumdgtag Glebe Close cumdgtam Green Dragon Farm cumdgtap Tanpits Lane cumdgtaj Green Dragon Farm
Bus Routes and Frequencies	555 – Keswick to Lancaster: Operates Mondays to Saturdays with an approx. hourly service (each direction) with additional

Service / Facility Category	Details
	Saturday summer services. Sundays approx. 2 hourly services (5 services in day)
Railway Station	
Train Services	
Public rights of way	507015 507002 507005 507007
Cycle routes	

Table 73: Burton in Kendal – Facilities and Services



Accessibility to Key Services

Settlement: Burton-in-Kendal LSOA: E01019348	Medium employment centre	Primary School	Secondary School	Further Education	GP	Hospital	Food Store	Town Centre	Average for all Services	Overall Rating
% population with 30 minutes public transport/ walking	86	100	90	77	88	0	88	88	77	Good
Average travel time by public transport/ walking in minutes	24	8	29	29	26	54	24	25	27	Good

Table 74: Burton in Kendal – Journey Time Statistics

5.5 Endmoor (LSC)

Population

- 5.5.1 The 2018 mid-year estimate of the population of Endmoor was 636 people. This is based on the combined population estimates for the following census output areas.

Census Output Area	2018 Population Estimate	Settlement
E00097814	313	Endmoor
E00097815	323	Endmoor
Total	636	Endmoor

Table 75: Endmoor - Population

Facilities and Services within the Settlement

Service / Facility Category	Details
Convenience Shop	Endmoor Village Store
Post Office	
Health services	
Built community facility	Endmoor Village Hall Club Inn

Service / Facility Category	Details
Outdoor community facility	Endmoor and District Tennis Club Endmoor Bowling Club Woodside Road Playing Fields Endmoor Play Area Land at Woodside Crescent, Endmoor
Educational Establishments	St Patrick's CofE School
High Speed Broadband	Superfast broadband (B4RN) is being rolled out in the Parish
Bus Stops	cumdwjp Endmoor Farm cumdwjgm Community Centre cumdwjgd Old Police Station cumdmdpd Community Centre cumdmdpm Old Police Station cumdwjgj Old Police Station
Bus Routes and Frequencies	551 – Arnsdale to Kirkby Lonsdale: Operates Thursday only 1 service per day (in each direction) 567 – Kirkby Lonsdale to Kendal: Operates Mondays to Fridays approx. 6/7 services per day (in each direction) and Saturdays 4 services per day.
Railway Station	
Train Services	
Public rights of way	565026 565011 565025
Cycle routes	

Table 76: Endmoor – Facilities and Services

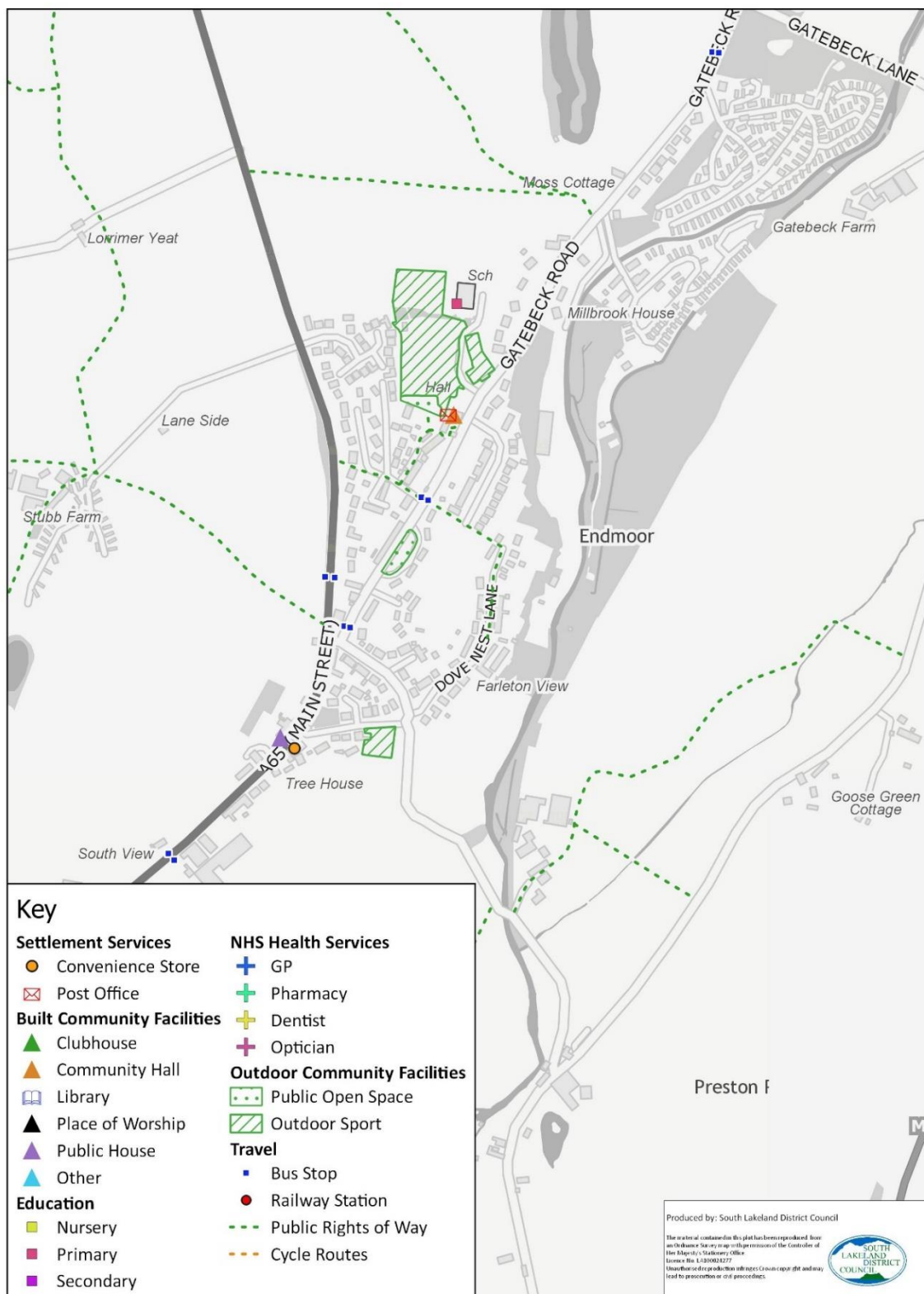


Figure 18: Endmoor – Facilities and Services

Comments/Feedback on First Draft

5.5.2 Preston Richard Parish Council provided the following comments in response to the early draft of this document:

- The population will be increased greatly as 106 new homes are currently being built along the A65.
- High speed broadband is currently being rolled out throughout the parish.
- The buses is hard to ascertain under current timetables due to Covid, this will need revisiting in more 'normal' times.
- The playing field and childrens play area are well used and will have a greater use when the new houses are completed, yet the equipment is very old and we do struggle to keep it viable.
- The Shop is much appreciated by all and especially in the present time.
- The bus service is inadequate for the population increase expected.
- Lack of walkways are a big problem and a hazard too as we have many large haulage companies in and passing through our parish.
- Gatebeck Lane and Road are particularly hazardous as there are no pavements and little room, but is used by HGV's and high volume of traffic, serving the primary school, haulage sites and the proposed new industrial park.
- For places to be considered sustainable locations they should have more shops, eating establishments, medical/dental facilities and improved transport links that complement working hours.

Accessibility to Key Services

Settlement: Endmoor LSOA: E01019352	Medium employment centre	Primary School	Secondary School	Further Education	GP	Hospital	Food Store	Town Centre	Average for all Services	Overall Rating
% population with 30 minutes public transport/ walking	83	71	42	40	38	48	53	71	56	Fair
Average travel time by public transport/ walking in minutes	19	41	52	52	49	44	48	33	42	Fair

Table 77: Endmoor – Journey Time Statistics

5.6 Holme (LSC)

Population

- 5.6.1 The 2018 mid-year estimate of the population of Holme was 1,409 people. This is based on the combined population estimates for the following census output areas.

Census Output Area	2018 Population Estimate	Settlement
E00097786	342	Holme
E00097787	392	Holme
E00097784	383	Holme
E00097785	292	Holme
Total	1,409	Holme

Table 78: Holme - Population

Facilities and Services within the Settlement

Service / Facility Category	Details
Convenience Shop	Lime Tree Stores (Spar)
Post Office	Holme Post Office and Newsagent
Health services	
Built community facility	Holy Trinity Church Holme Parish Hall Smithy Inn
Outdoor community facility	Holme Cricket Club Holme Bowling Club Holme Sports Field Open Space West of Twinter Bank Twinter Bank Play Area Pear Tree Park Play Area Mayfield Avenue Play Area
Educational Establishments	Holme Primary School
High Speed Broadband	TBC
Bus Stops	cumdjdtm Smithy Inn cumdjdtp Smithy Inn

Service / Facility Category	Details
Bus Routes and Frequencies	555 – Keswick to Lancaster: Operates Mondays to Saturdays with an approx. hourly service (each direction) with additional Saturday summer services. Sundays approx. 2 hourly services (5 services in day)
Railway Station	
Train Services	
Public rights of way	533011 533004 533003
Cycle routes	

Table 79: Holme – Facilities and Services

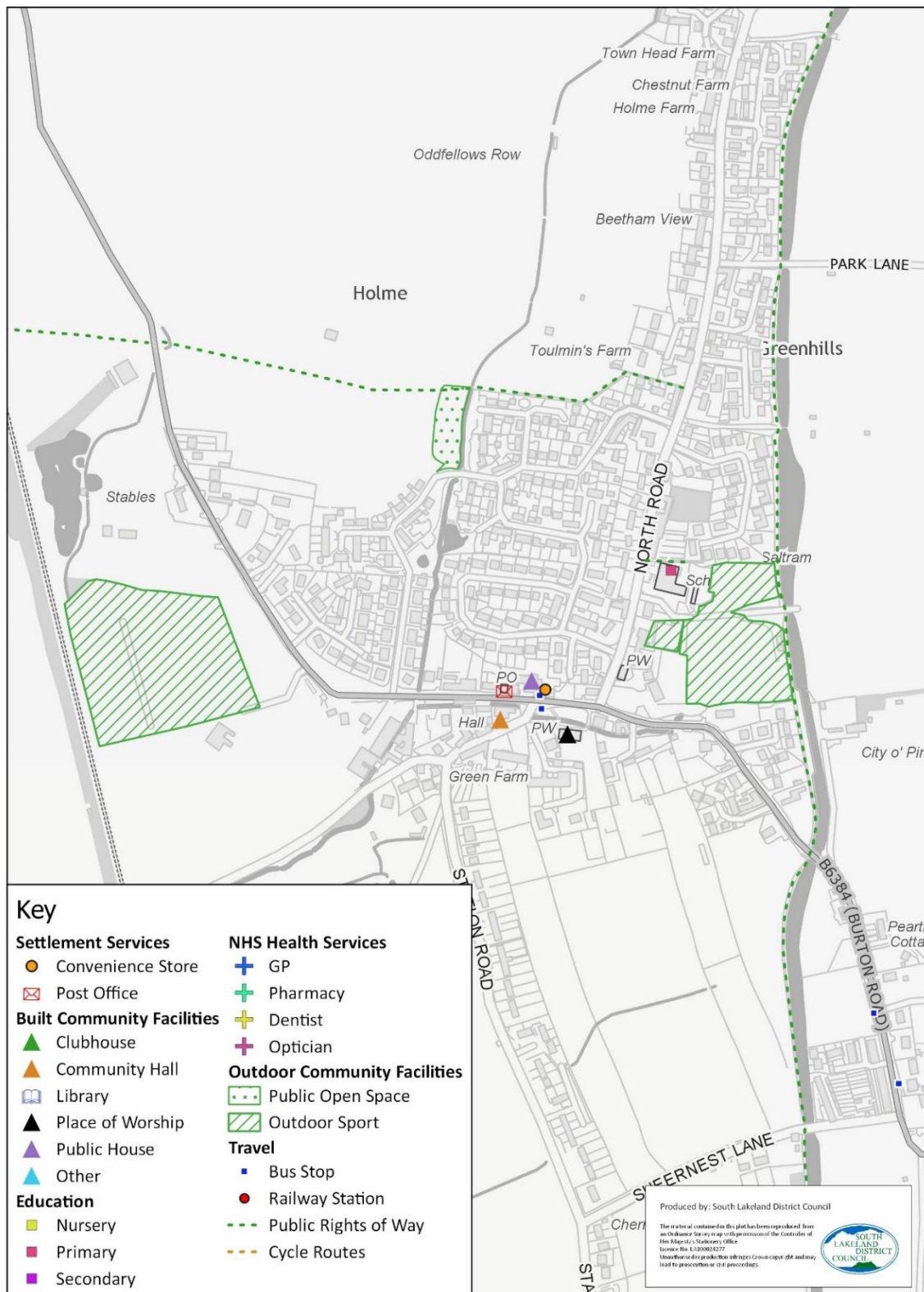


Figure 19: Holme – Facilities and Services

Accessibility to Key Services

Settlement: Holme LSOA: Holme	Medium employment centre	Primary School	Secondary School	Further Education	GP	Hospital	Food Store	Town Centre	Average for all Services	Overall Rating
% population with 30 minutes public transport/ walking	100	100	38	65	100	0	100	41	68	Fair
Average travel time by public transport/ walking in minutes	20	8	30	30	19	57	20	30	27	Good

Table 80: Holme – Journey Time Statistics

5.7 Levens (LSC)

Population

- 5.7.1 The 2018 mid-year estimate of the population of Levens was 1,008 people. This is based on the combined population estimates for the following census output areas.

Census Output Area	2018 Population Estimate	Settlement
E00097969	302	Levens
E00097970	250	Levens
E00097968	270	Levens
E00097967	186	Levens (includes some wider rural areas)
Total	1,008	Levens

Table 81: Levens - Population

Facilities and Services within the Settlement

Service / Facility Category	Details
Convenience Shop	Central Stores (Londis)
Post Office	

Service / Facility Category	Details
Health services	Dr Gorrigan JH & Partners GP
Built community facility	Levens Methodist Church St Johns Church Levens Institute Hare And Hounds
Outdoor community facility	Levens Playing Fields The Green
Educational Establishments	Levens CofE School
High Speed Broadband	TBC
Bus Stops	cumdwgdg Hare & Hounds cumdjwgt Shelter cumdwgdj Hare & Hounds cumdmadm Lane Foot
Bus Routes and Frequencies	551 – Arnsdale to Kirkby Lonsdale: Operates Thursday only 1 service per day (in each direction) 552 – Arnsdale to Kendal: Operates Wednesday and Friday only. 1 service per day. 550 – Morecambe to Milnthorpe: Operates Tuesday only, 1 service. Regular 555 and X6 services are accessible from A590 but approx. 15 minute walk from Levens.
Railway Station	
Train Services	
Public rights of way	547013 547009 547014 547015 547008 547012
Cycle routes	Bay Cycleway Walney to Wear & Whitby (W2W)

Service / Facility Category	Details
	Walney to Wear & Whitby (W2W) & Bay Cycleway

Table 82: Levens – Facilities and Services

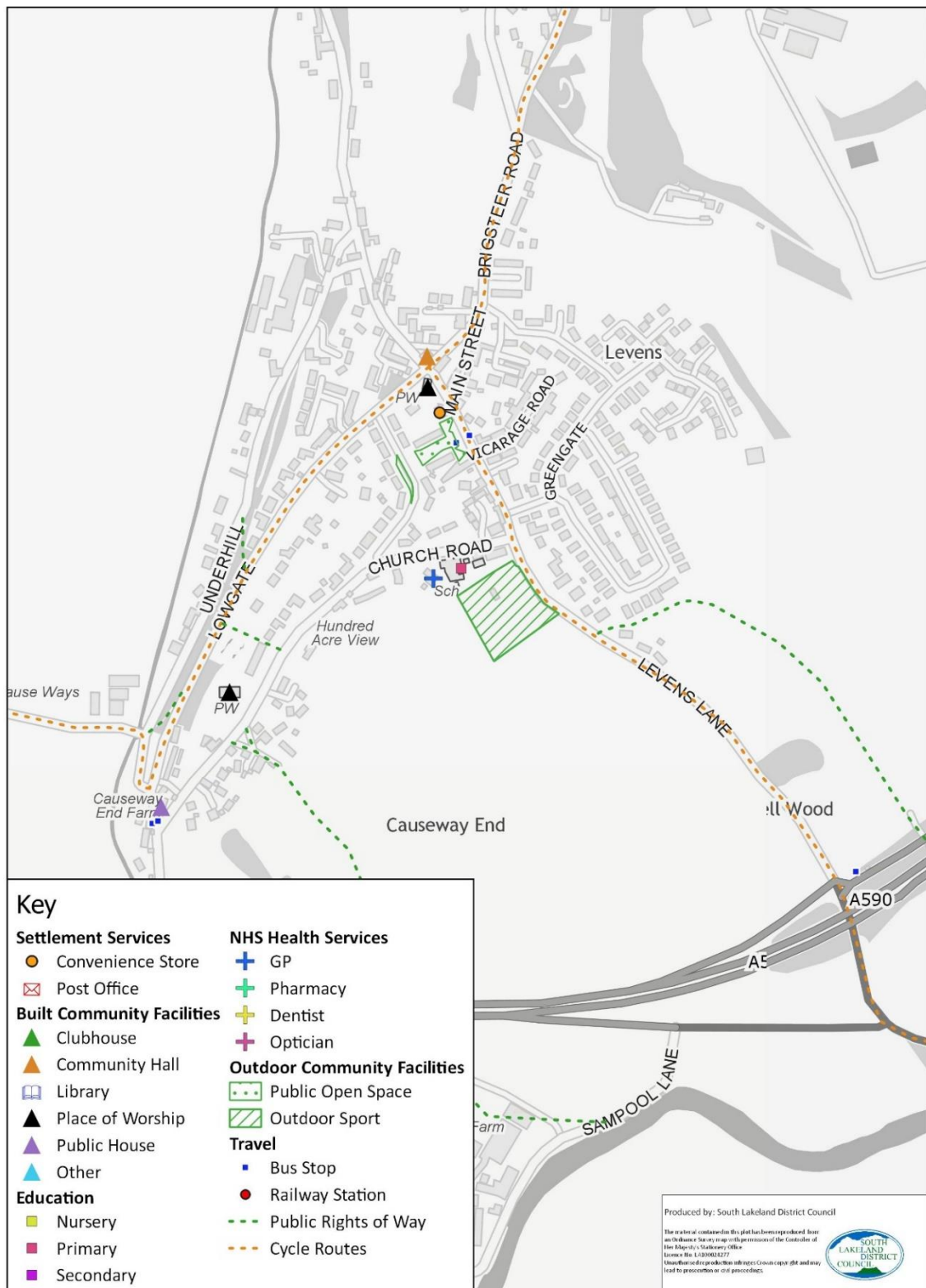


Figure 20: Levens – Facilities and Services

Accessibility to Key Services

Settlement: Levens LSOA: E01019377	Medium employment centre	Primary School	Secondary School	Further Education	GP	Hospital	Food Store	Town Centre	Average for all Services	Overall Rating
% population with 30 minutes public transport/ walking	100	100	73	94	55	0	100	35	70	Fair
Average travel time by public transport/ walking in minutes	10	10	30	26	24	47	8	32	23	Good

Table 83: Levens – Journey Time Statistics

5.8 Natland (LSC)

Population

- 5.8.1 The 2018 mid-year estimate of the population of Natland was 531 people. This is based on the combined population estimates for the following census output areas.

Census Output Area	2018 Population Estimate	Settlement
E00098001	311	Natland
E00098002	220	Natland
Total	531	Natland

Table 84: Natland – Population

Facilities and Services within the Settlement

Service / Facility Category	Details
Convenience Shop	
Post Office	Natland Post Office and tea room
Health services	
Built community facility	St Marks Church Natland and Oxenholme Village Hall
Outdoor community facility	St Mark's C of E Primary School playing field The Green, NW of St Mark's Church
Educational Establishments	St Mark's CofE Primary School
High Speed Broadband	Fibre broadband available from BT openreach
Bus Stops	cumdtpjw Park Close cumdtplt Park Close
Bus Routes and Frequencies	<p>552 – Arnside to Kendal: Operates Wednesday and Friday only. 1 service per day.</p> <p>A range of Kendal bus services are available from Burton Road, approx. 10-15 minute walk from Natland, including:</p> <p>41 and 41A – Kendal Town Service: Operates Mondays to Saturdays approximately hourly.</p> <p>40 – Kendal Town Sunday Service Operates hourly.</p> <p>567 – Kirkby Lonsdale to Kendal: Operates Mondays to Fridays approx. 6/7 services per day (in each direction) and Saturdays 4 services per day.</p> <p>W1 – Kendal to Sedbergh: Operates weekdays 2 services per day (in each direction)</p>

Service / Facility Category	Details
Railway Station	
Train Services	
Public rights of way	557004 557007 557008 557005 557006 (557001,002,003,009 are also within the parish and easily accessible from the village.
Cycle routes	NCN 6 (Watford to Windermere) NCN 70 Walney to Wear & Whitby (W2W)

Table 85: Natland – Facilities and Services

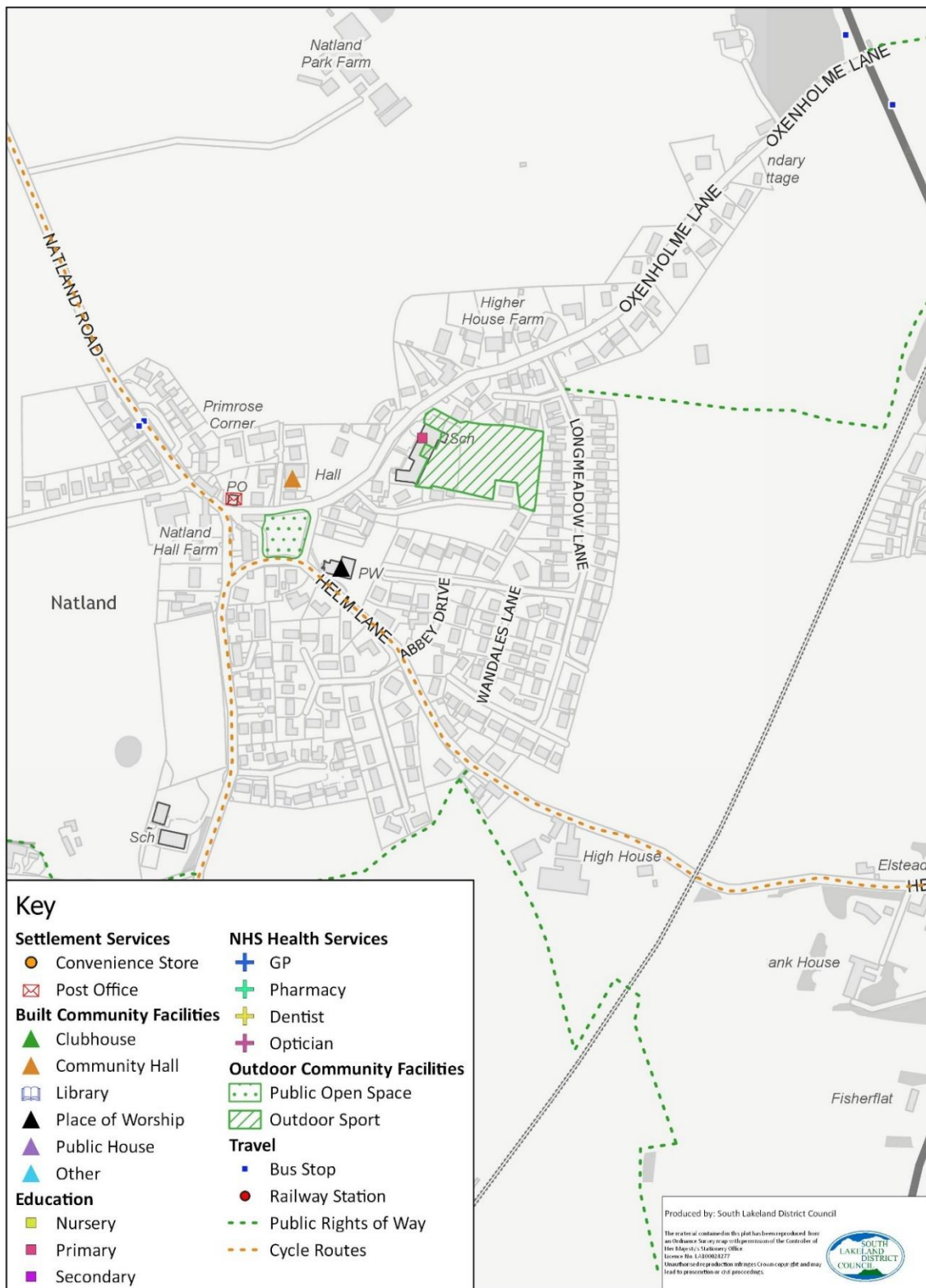


Figure 21: Natland – Facilities and Services

Comments/Feedback on First Draft

5.8.2 Natland Parish Council provided the following comments in response to the early draft of this document:

- Settlement: Natland village (a local service centre)
- Facilities and Services within the Settlement:
 - Convenience Shop - leaving this blank is probably correct as the Shop part of the Post Office has declined and no longer meets the criteria.
 - The Village Hall's title is the "Natland and Oxenholme Village Hall".
 - High Speed Broadband - is generally available from BT Openreach for those who wish to subscribe.
 - Public rights of way - it needs to add FP 557005 and BW 557006 which start just within the settlement. Also FPs 557001, 557002 and 557003, and BW 557009, are within the parish and easily accessible from the village.
 - Cycle routes - there are two cycle routes through the village: NCN Route 6 (Watford to Windermere) and NCN Route 70 (Walney to Wear). The draft table appears to have combined them.
- Accessibility to Key Services:
 - Some bizarre figures indicate the unreliability of using LSOA statistics, such as the hospital being further away than a GP or food store, and further education being nearer than a secondary school. Presumably the LSOA is too big and is centred on some point outside the settlement.
- The decline of the village shop so that it no longer meets 'convenience shop' criteria is mentioned above. Change in ownership and already falling usage may have been factors. Diversifying into tea room not a success even before the impact of Covid.
- The Church and Village Hall are much valued and were busy and well-used pre-Covid.
- The Primary School (now including nursery/preschool provision on its site - formerly in the Village Hall) is popular and busy, but suffers from a lack of school-age children in the village necessitating a very high proportion of pupils to be 'bussed in' by motor vehicles.
- Natland benefits considerably from its proximity to Kendal with easy access to services (health, shops, transport, entertainment) lying just outside its (parish) boundary.
- Usage of the excellent public rights-of-way network has soared during the pandemic and could well be sustained post-Covid by new-found awareness of its benefits.
- A publicly accessible defibrillator has been installed outside the Village Hall - let's hope usage remains low!

- The only public telephone in the village has had its telephony removed by BT.
- The steady decline of the bus service to/from Kendal through the village (as opposed to along the A65) is well documented and is now almost non-existent.
- C5071 Natland Road is getting busier with pedestrians and cyclists and urgently needs a footway in the verge for road safety reasons.
- Likewise the west verge of A65 Burton Road between Helm Lane and the new 'extra care' housing development needs a footway to avoid pedestrians walking to/from Kendal having to cross the busy A65 twice.
- Some village roads have benefited from recent resurfacing necessitated by their deterioration following the decline in regular surface-dressing by a cash-strapped highway authority. But other roads, notably U5626 Oxenholme Lane and U5625 Hawes Lane, are still in a very poor state.
- The U5630 road over Helm is well used by pedestrians (even with prams) and cyclists and should be closed to through motor vehicles to protect their safety and amenity.
- Surface water (highway) drainage: the reliance on soakaways that are now silting up and the lack of surface water sewers (because outfall to watercourses is not available), along with climate change, are causing increased incidents of flooding, particularly along Helm Lane and on the Village Green.
- Permitting the 'Beeches' estate (on the southern outskirts of Kendal but in Natland parish) to be developed without broadband 'fibre to premises' showed a regrettable lack of foresight by planners and the developer.
- Increasing frequency of water leaks/repairs (and possibly gas leaks to) may indicate an aging network that United Utilities needs to renew - on Oxenholme Lane in particular.
- Access land on The Helm, just east of Natland village but within its parish, is an important recreational amenity for the community (and even more for Kendal). The western side (Helm Common) has fallen into neglect and needs a management plan.
- Facilities considered to be important for a 'sustainable settlement':
 - Obviously a shop, primary school, community hall, and buses to connect to health services. It's a pity Natland's shop has declined, but ASDA is just down the road.
 - Once upon a time, a public house might have been considered important. But the downsides (traffic, noise) may now be unacceptable, and will the 'pub culture' ever revive after Covid?
 - Looking towards the future, who knows what new infrastructure will be needed, such as for higher speed broadband, mobile telephony, electric

vehicle charging points, or more 'retro' services such as postal services and access to cash?

Accessibility to Key Services

Settlement: Natland LSOA: E01019383	Medium employment centre	Primary School	Secondary School	Further Education	GP	Hospital	Food Store	Town Centre	Average for all Services	Overall Rating
% population with 30 minutes public transport/ walking	85	95	43	37	84	56	72	15	61	Fair
Average travel time by public transport/ walking in minutes	23	16	37	36	30	40	28	41	31	Fair

Table 86: Natland – Journey Time Statistics

5.9 Oxenholme (LSC)

Population

- 5.9.1 The 2018 mid-year estimate of the population of Oxenholme was 837 people. This is based on the combined population estimates for the following census output areas.

Census Output Area	2018 Population Estimate	Settlement
E00097911	224	Oxenholme
E00097907	289	Oxenholme
E00097906	324	Oxenholme
Total	837	Oxenholme

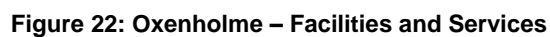
Table 87: Oxenholme – Population

Facilities and Services within the Settlement

Service / Facility Category	Details
Convenience Shop	David Willan Food Hall
Post Office	Closed February 2020
Health services	
Built community facility	Station Inn
Outdoor community facility	Bolefoot play area Helmside Gardens play area Playground adjacent to Bolefoot Helmside Road
Educational Establishments	
High Speed Broadband	TBC
Bus Stops	cumdjmtg Burton Road cumdjpdj Burton Road cumdjmwj Hill Place cumdjmwj Bolefoot cumdjmwg Bolefoot cumdjpad Hill Place cumdjpad Helmside Road cumdjpat Station Approach
Bus Routes and Frequencies	41 and 41A – Kendal Town Service: Operates Mondays to Saturdays approximately hourly. 40 – Kendal Town Sunday Service Operates hourly. 567 – Kirkby Lonsdale to Kendal: Operates Mondays to Fridays approx. 6/7 services per day (in each direction) and Saturdays 4 services per day. W1 – Kendal to Sedbergh: Operates weekdays 2 services per day (in each direction)

Service / Facility Category	Details
	S1 – Dent to Kendal: Operates Saturdays, 4 services per day (in each direction)
Railway Station	Oxenholme Railway Station
Train Services	<p>Served by both the Lakes Line which provides services to Windermere, and also the West Coast Main Line providing direct connections to nearby towns and major cities.</p> <p>Service frequency on the Lakes Line is generally around 1 train per hour. Service frequency on the West Coast Mine Line is generally 4 to 5 trains per hour.</p>
Public rights of way	
Cycle routes	National Cycle Network Link Route to link with NCN 70 (Walney to Wear) and NCN 6 through Kendal

Table 88: Oxenholme – Facilities and Services



Accessibility to Key Services

Settlement: Oxenholme LSOA: E01019368	Medium employment centre	Primary School	Secondary School	Further Education	GP	Hospital	Food Store	Town Centre	Average for all Services	Overall Rating
% population with 30 minutes public transport/ walking	100	100	100	100	100	100	100	100	100	Excellent
Average travel time by public transport/ walking in minutes	11	15	15	15	10	14	10	20	14	Excellent

Table 89: Oxenholme – Journey Time Statistics

5.10 Ackenthwaite (Rural Settlement)

Population

- 5.10.1 The 2018 mid-year estimate of the population of Ackenthwaite was 515 people. This is based on the combined population estimates for the following census output areas.

Census Output Area	2018 Population Estimate	Settlement
E00097992	332	Ackenthwaite
E00097996	374 (183)	Milnthorpe and part of Ackenthwaite (approx. 49% of the properties in this area are in Ackenthwaite)
Total	515	Ackenthwaite

Table 90: Ackenthwaite - Population

Facilities and Services within the Settlement

Service / Facility Category	Details
Convenience Shop	
Post Office	

Service / Facility Category	Details
Health services	
Built community facility	
Outdoor community facility	
Educational Establishments	
High Speed Broadband	TBC
Bus Stops	cumdmama Inisfree cumdmajt Dallam School cumdmajp Dallam School
Bus Routes and Frequencies	555 – Keswick to Lancaster: Operates Mondays to Saturdays with an approx. hourly service (each direction) with additional Saturday summer services. Sundays approx. 2 hourly services (5 services in day) 550 – Morecambe to Milnthorpe: Operates Tuesday only, 1 service. Milnthorpe bus services can also be accessed with a ten minute walk to the A6.
Railway Station	
Train Services	
Public rights of way	556003
Cycle routes	

Table 91: Ackenthwaite – Facilities and Services

Accessibility to Key Services

Settlement: Ackenthwaite LSOA: E01019382	Medium employment centre	Primary School	Secondary School	Further Education	GP	Hospital	Food Store	Town Centre	Average for all Services	Overall Rating
% population with 30 minutes public transport/ walking	100	100	74	100	100	0	100	57	79	Good
Average travel time by public transport/ walking in minutes	6	8	28	26	5	46	5	31	19	Good

Table 92: Ackenthwaite – Journey Time Statistics

5.11 Endmoor (Low Park) (Rural Settlement)

Population

- 5.11.1 The 2018 mid-year estimate of the population of Low Park was 446 people. This is based on the combined population estimates for the following census output areas.

Census Output Area	2018 Population Estimate	Settlement
E00097816	311 (128)	Low Park/Crooklands (approx. 41% of properties in this area are in Low Park)
E00097817	318	Low Park
Total	446	Low Park

Table 93: Endmoor (Low Park) - Population

Facilities and Services within the Settlement

Service / Facility Category	Details
Convenience Shop	
Post Office	

Service / Facility Category	Details
Health services	
Built community facility	
Outdoor community facility	
Educational Establishments	
High Speed Broadband	TBC
Bus Stops	cumdwgaw Summerlands cumdwgda Summerlands
Bus Routes and Frequencies	567 – Kirkby Lonsdale to Kendal: Operates Mondays to Fridays approx. 6/7 services a day (in each direction). Saturdays 4 services. 551 – Arnsdale to Kirkby Lonsdale: Operates Thursday only 1 service per day (in each direction)
Railway Station	
Train Services	
Public rights of way	565007 565006 565013
Cycle routes	

Table 94: Endmoor (Low Park) – Facilities and Services

Accessibility to Key Services

Settlement: Low Park LSOA: E01019352	Medium employment centre	Primary School	Secondary School	Further Education	GP	Hospital	Food Store	Town Centre	Average for all Services	Overall Rating
% population with 30 minutes public transport/ walking	83	71	42	40	38	48	53	71	56	Fair
Average travel time by public transport/ walking in minutes	19	41	52	52	49	44	48	33	42	Fair

Table 95: End (Low Park) – Journey Time Statistics

5.12 Gatebeck (Rural Settlement)

Population

- 5.12.1 The 2018 mid-year estimate of the population of Gatebeck was 84 people. This is based on the combined population estimates for the following census output areas.

Census Output Area	2018 Population Estimate	Settlement
E00097813	401 (84)	Gatebeck and surrounding rural areas (approx. 21% of properties in this area are in Gatebeck)
Total	84	Gatebeck

Table 96: Gatebeck - Population

Facilities and Services within the Settlement

Service / Facility Category	Details
Convenience Shop	
Post Office	
Health services	

Service / Facility Category	Details
Built community facility	
Outdoor community facility	
Educational Establishments	
High Speed Broadband	TBC
Bus Stops	cumdwjdw Gatebeck Lodge cumdwjdt Gatebeck Lodge
Bus Routes and Frequencies	567 – Kirkby Lonsdale to Kendal: Operates Mondays to Fridays approx. 6/7 services a day (in each direction). Saturdays 4 services.
Railway Station	
Train Services	
Public rights of way	
Cycle routes	

Table 97: Gatebeck – Facilities and Services

Accessibility to Key Services

Settlement: Gatebeck LSOA: E01019352	Medium employment centre	Primary School	Secondary School	Further Education	GP	Hospital	Food Store	Town Centre	Average for all Services	Overall Rating
% population with 30 minutes public transport/ walking	83	71	42	40	38	48	53	71	56	Fair
Average travel time by public transport/ walking in minutes	19	41	52	52	49	44	48	33	42	Fair

Table 98: Gatebeck – Journey Time Statistics

5.13 Grayrigg (Rural Settlement)

Population

- 5.13.1 The 2018 mid-year estimate of the population of Grayrigg was 194 people. This is based on the combined population estimates for the following census output areas.

Census Output Area	2018 Population Estimate	Settlement
E00098074	194	Grayrigg
Total	194	Grayrigg

Table 99: Grayrigg - Population

Facilities and Services within the Settlement

Service / Facility Category	Details
Convenience Shop	
Post Office	
Health services	
Built community facility	St John the Evangelist

Service / Facility Category	Details
Outdoor community facility	School football pitch and grounds
Educational Establishments	Grayrigg CofE Primary School
High Speed Broadband	TBC
Bus Stops	cumdjapj School cumdjapm Primary School
Bus Routes and Frequencies	106 – Kendal to Penrith: Operates Tuesdays and Fridays only. 1 service per day (each direction) 570 - Ravenstonedale to Kendal: Operates Thursdays only. 1 service per day (each direction) 571 – Kendal to Brough: Operates Mondays only. 1 service per day (each direction).
Railway Station	
Train Services	
Public rights of way	527008 527006 527011
Cycle routes	

Table 100: Grayrigg – Facilities and Services

Accessibility to Key Services

Settlement: Grayrigg LSOA: E01019394	Medium employment centre	Primary School	Secondary School	Further Education	GP	Hospital	Food Store	Town Centre	Average for all Services	Overall Rating
% population with 30 minutes public transport/ walking	21	35	8	7	11	0	11	11	13	Poor
Average travel time by public transport/ walking in minutes	47	32	58	63	58	86	54	75	59	Fair

Table 101: Grayrigg: Journey Time Statistics

5.14 Heversham and Leasgill (Rural Settlement)

Population

- 5.14.1 The 2018 mid-year estimate of the population of Heversham and Leasgill was 715 people. This is based on the combined population estimates for the following census output areas.

Census Output Area	2018 Population Estimate	Settlement
E00097966	384	Heversham and Leasgill (includes Woodhouse)
E00097965	331	Heversham and Leasgill
Total	715	Heversham and Leasgill

Table 102: Heversham and Leasgill - Population

Facilities and Services within the Settlement

Service / Facility Category	Details
Convenience Shop	
Post Office	
Health services	

Service / Facility Category	Details
Built community facility	St Peter's Church Dallam School Heversham Campus (meeting rooms and community facilities including pavilion) Heversham Hotel Athenaeum Hall (Village Hall)
Outdoor community facility	Dallam School Tennis Courts and Football Pitches Children's play area adjacent Prices Way Heversham Bowling Club
Educational Establishments	
High Speed Broadband	TBC
Bus Stops	cumdjdw Dallam Junior School cumdjdma Woodhouse Lane cumjdmt West View cumdjdj Woodhouse Lane cumjdmg Dallam School cumjdmd Village Hall cumjdmp Strickland House cumdjdp Village Hall cumjdjmj Eversley Farm
Bus Routes and Frequencies	555 – Keswick to Lancaster: Operates Mondays to Saturdays with an approx. hourly service (each direction) with additional Saturday summer services. Sundays approx. 2 hourly services (5 services in day) 551 – Arnsdale to Kirkby Lonsdale: Operates Thursday only 1 service per day (in each direction) 552 – Arnsdale to Kendal: Operates Wednesday and Friday only. 1 service per day. 550 – Morecambe to Milnthorpe: Operates Tuesday only, 1 service.
Railway Station	
Train Services	

Service / Facility Category	Details
Public rights of way	531017 531008 531011 531012 531002 531009 531010 531007
Cycle routes	

Table 103: Heversham and Leasgill – Facilities and Services

Accessibility to Key Services

Settlement: Heversham LSOA: E01019377	Medium employment centre	Primary School	Secondary School	Further Education	GP	Hospital	Food Store	Town Centre	Average for all Services	Overall Rating
% population with 30 minutes public transport/ walking	100	100	73	94	55	0	100	35	70	Fair
Average travel time by public transport/ walking in minutes	10	10	30	26	24	47	8	32	23	Good

Table 104: Heversham and Leasgill – Journey Time Statistics

5.15 Hutton Roof (Rural Settlement)

Population

- 5.15.1 The 2018 mid-year estimate of the population of Hutton Roof was 219 people. This is based on the combined population estimates for the following census output areas.

Census Output Area	2018 Population Estimate	Settlement
E00097810	219	Hutton Roof
Total	219	Hutton Roof

Table 105: Hutton Roof - Population

Facilities and Services within the Settlement

Service / Facility Category	Details
Convenience Shop	
Post Office	Post Office
Health services	
Built community facility	Hutton Roof Village Hall
Outdoor community facility	
Educational Establishments	
High Speed Broadband	Served by 1GB B4RN network.
Bus Stops	
Bus Routes and Frequencies	
Railway Station	
Train Services	
Public rights of way	535006 535009 535003
Cycle routes	

Table 106: Hutton Roof – Facilities and Services

Accessibility to Key Services

Settlement: Hutton Roof LSOA: E01019352	Medium employment centre	Primary School	Secondary School	Further Education	GP	Hospital	Food Store	Town Centre	Average for all Services	Overall Rating
% population with 30 minutes public transport/ walking	83	71	42	40	38	48	53	71	56	Fair
Average travel time by public transport/ walking in minutes	19	41	52	52	49	44	48	33	42	Fair

Table 107: Hutton Roof – Journey Time Statistics

5.16 Old Hutton (Rural Settlement)

Population

- 5.16.1 The 2018 mid-year estimate of the population of Old Hutton was 64 people. This is based on the combined population estimates for the following census output areas.

Census Output Area	2018 Population Estimate	Settlement
E00098078	402 (64)	Old Hutton/Middleshaw/Bridge End (approx. 16% of properties in this area are in Old Hutton)
Total	64	Old Hutton

Table 108: Old Hutton - Population

Facilities and Services within the Settlement

Service / Facility Category	Details
Convenience Shop	
Post Office	
Health services	

Service / Facility Category	Details
Built community facility	St John the Baptist's Church Old Hutton Public Hall
Outdoor community facility	St John's View All Weather Pitch St John's View play area St John's View Recreation Field
Educational Establishments	Old Hutton C of E School
High Speed Broadband	TBC
Bus Stops	
Bus Routes and Frequencies	
Railway Station	
Train Services	
Public rights of way	560010 560018
Cycle routes	

Table 109: Old Hutton – Facilities and Services

Accessibility to Key Services

Settlement: Old Hutton LSOA: E01019392	Medium employment centre	Primary School	Secondary School	Further Education	GP	Hospital	Food Store	Town Centre	Average for all Services	Overall Rating
% population with 30 minutes public transport/ walking	21	35	8	7	11	0	11	11	13	Poor
Average travel time by public transport/ walking in minutes	47	32	58	63	58	86	54	75	59	Fair

Table 110: Old Hutton – Journey Time Statistics

5.17 Old Hutton – Middleshaw (Rural Settlement)

Population

- 5.17.1 The 2018 mid-year estimate of the population of Middleshaw was 64 people. This is based on the combined population estimates for the following census output areas.

Census Output Area	2018 Population Estimate	Settlement
E00098078	402 (60)	Old Hutton/ Middleshaw/Bridge End (approx. 15% of properties in this area are in Middleshaw)
Total	60	Middleshaw

Table 111: Old Hutton (Middleshaw) - Population

Facilities and Services within the Settlement

Service / Facility Category	Details
Convenience Shop	
Post Office	
Health services	
Built community facility	
Outdoor community facility	
Educational Establishments	
High Speed Broadband	TBC
Bus Stops	
Bus Routes and Frequencies	

Service / Facility Category	Details
Railway Station	
Train Services	
Public rights of way	560018 560016 560017
Cycle routes	

Table 112: Old Hutton (Middleshaw) – Facilities and Services

Accessibility to Key Services

Settlement: Old Hutton - Middelshaw LSOA: E01019392	Medium employment centre	Primary School	Secondary School	Further Education	GP	Hospital	Food Store	Town Centre	Average for all Services	Overall Rating
% population with 30 minutes public transport/ walking	21	35	8	7	11	0	11	11	13	Poor
Average travel time by public transport/ walking in minutes	47	32	58	63	58	86	54	75	59	Fair

Table 113: Old Hutton (Middleshaw) – Journey Time Statistics

5.18 Old Hutton – Bridge End (Rural Settlement)

Population

- 5.18.1 The 2018 mid-year estimate of the population of Old Hutton (Bridge End) was 76 people. This is based on the combined population estimates for the following census output areas.

Census Output Area	2018 Population Estimate	Settlement
E00098078	402 (76)	Old Hutton/Middleshaw/Bridge End (approx. 19% of properties in this area are in Bridge End)

Census Output Area	2018 Population Estimate	Settlement
Total	76	Old Hutton (Bridge End)

Table 114: Old Hutton (Bridge End) – Population

Facilities and Services within the Settlement

Service / Facility Category	Details
Convenience Shop	
Post Office	
Health services	
Built community facility	
Outdoor community facility	
Educational Establishments	
High Speed Broadband	TBC
Bus Stops	
Bus Routes and Frequencies	
Railway Station	
Train Services	
Public rights of way	560008
Cycle routes	

Table 115: Old Hutton (Bridge End) – Facilities and Services

Accessibility to Key Services

Settlement: Old Hutton – Bridge End LSOA: E01019392	Medium employment centre	Primary School	Secondary School	Further Education	GP	Hospital	Food Store	Town Centre	Average for all Services	Overall Rating
% population with 30 minutes public transport/ walking	21	35	8	7	11	0	11	11	13	Poor
Average travel time by public transport/ walking in minutes	47	32	58	63	58	86	54	75	59	Fair

Table 116: Old Hutton (Bridge End) – Journey Time Statistics

5.19 Sedgwick (Rural Settlement)

Population

- 5.19.1 The 2018 mid-year estimate of the population of Sedgwick was 341 people. This is based on the combined population estimates for the following census output areas.

Census Output Area	2018 Population Estimate	Settlement
E00098004	341	Sedgwick
Total	341	Sedgwick

Table 117: Sedgwick – Population

Facilities and Services within the Settlement

Service / Facility Category	Details
Convenience Shop	
Post Office	
Health services	
Built community facility	Sedgwick Village Hall
Outdoor community facility	Millennium Field Play area Sedgwick Cricket Club
Educational Establishments	
High Speed Broadband	TBC
Bus Stops	cumdmgat Aqueduct cumdwpap Old Post Office cumdmgap Aqueduct cumdwpam Old Post Office
Bus Routes and Frequencies	550 – Morecambe to Milnthorpe: Operates Tuesday only, 1 service. 551 – Arnside to Kirkby Lonsdale:

Service / Facility Category	Details
	Operates Thursday only 1 service per day (in each direction) 552 – Arnside to Kendal: Operates Wednesday and Friday only. 1 service per day.
Railway Station	
Train Services	
Public rights of way	569001
Cycle routes	Walney to Wear and Whitby (W2W) - National Route 70

Table 118: Sedgwick – Facilities and Services

Accessibility to Key Services

Settlement: Sedgwick LSOA: E01019383	Medium employment centre	Primary School	Secondary School	Further Education	GP	Hospital	Food Store	Town Centre	Average for all Services	Overall Rating
% population with 30 minutes public transport/ walking	85	95	43	37	84	56	72	15	61	Fair
Average travel time by public transport/ walking in minutes	23	0	37	36	30	40	28	41	31	Fair

Table 119: Sedgwick – Journey Time Statistics

6 Draft Assessment – AONB Settlements

6.1 Arnside (LSC)

Population

- 6.1.1 The 2018 mid-year estimate of the population of Arnside was 2,251 people. This is based on the combined population estimates for the following census output areas.

Census Output Area	2018 Population Estimate	Settlement
E00097751	209	Arnside
E00097752	256	Arnside
E00097748	243	Arnside
E00097747	197	Arnside
E00097755	264	Arnside
E00097753	318	Arnside
E00097750	206	Arnside
E00097749	293	Arnside
E00097754	265	Arnside
Total	2,251	Arnside

Table 120: Arnside - Population

Facilities and Services within the Settlement

Service / Facility Category	Details
Convenience Shop	Bullough's Londis Anthony's Village Store (Londis)
Post Office	Post Office
Health services	Arnside Dental Practice Arnside Medical Practice Rowlands Pharmacy
Built community facility	Village Hall The Albion Public House Ye Olde Fighting Cocks Public House Arnside Methodist Church St James' Church Our Lady of Lourdes Catholic Church Arnside Educational Institute and Library Link Arnside Cemetery Chapel

Service / Facility Category	Details
Outdoor community facility	<p>WI Hall Gardens</p> <p>Arnside Primary School Grounds</p> <p>Memorial Playing Field</p> <p>Allotments, Silverdale Road</p>
Educational Establishments	Arnside C of E Primary School
High Speed Broadband	TBC
Bus Stops	<p>cumdgpad Springfield Avenue</p> <p>cumdgpag Dale House</p> <p>cumdgpag Rail Station</p> <p>cumdgpag Dale House</p> <p>cumdgpag The Promenade</p> <p>cumdgpat Our Lady of Lourdes Church</p> <p>cumdgpdg Ye Olde Fighting Cocks</p> <p>cumdwmt Pier</p> <p>cumdwpad Ye Old Fighting Cocks</p> <p>cumdwpag Arnside Station</p> <p>cumdmgwp Hollins Lane</p> <p>cumdmppm Foot of Briery Bank</p> <p>Station Entrance</p> <p>Station Entrance</p>
Bus Routes and Frequencies	<p>550 – Morecambe to Milnthorpe: Operates Tuesday only, 1 service.</p> <p>551 – Arnside to Kirkby Lonsdale: Operates Thursday only 1 service per day (in each direction)</p> <p>552 – Arnside to Kendal: Operates Wednesday and Friday only. 1 service per day.</p> <p>Also a range of school services operate to Kirkby Lonsdale.</p>
Railway Station	Arnside Rail Station
Train Services	Served by the Furness Line which runs between Barrow-in-Furness and Carnforth and provides connections to the West Coast Main Line at Lancaster and the Cumbrian Coast Line at Barrow-in-Furness.

Service / Facility Category	Details		
	Service frequency is generally 1 to 2 trains per hour.		
Public rights of way	502016 502023 502026 502030 502027 502031	502019 502024 502028 502034 502036	502021 502025 502029 502007 502017
Cycle routes	Bay Cycleway (National Route 700)		

Table 121: Arnside – Facilities and Services

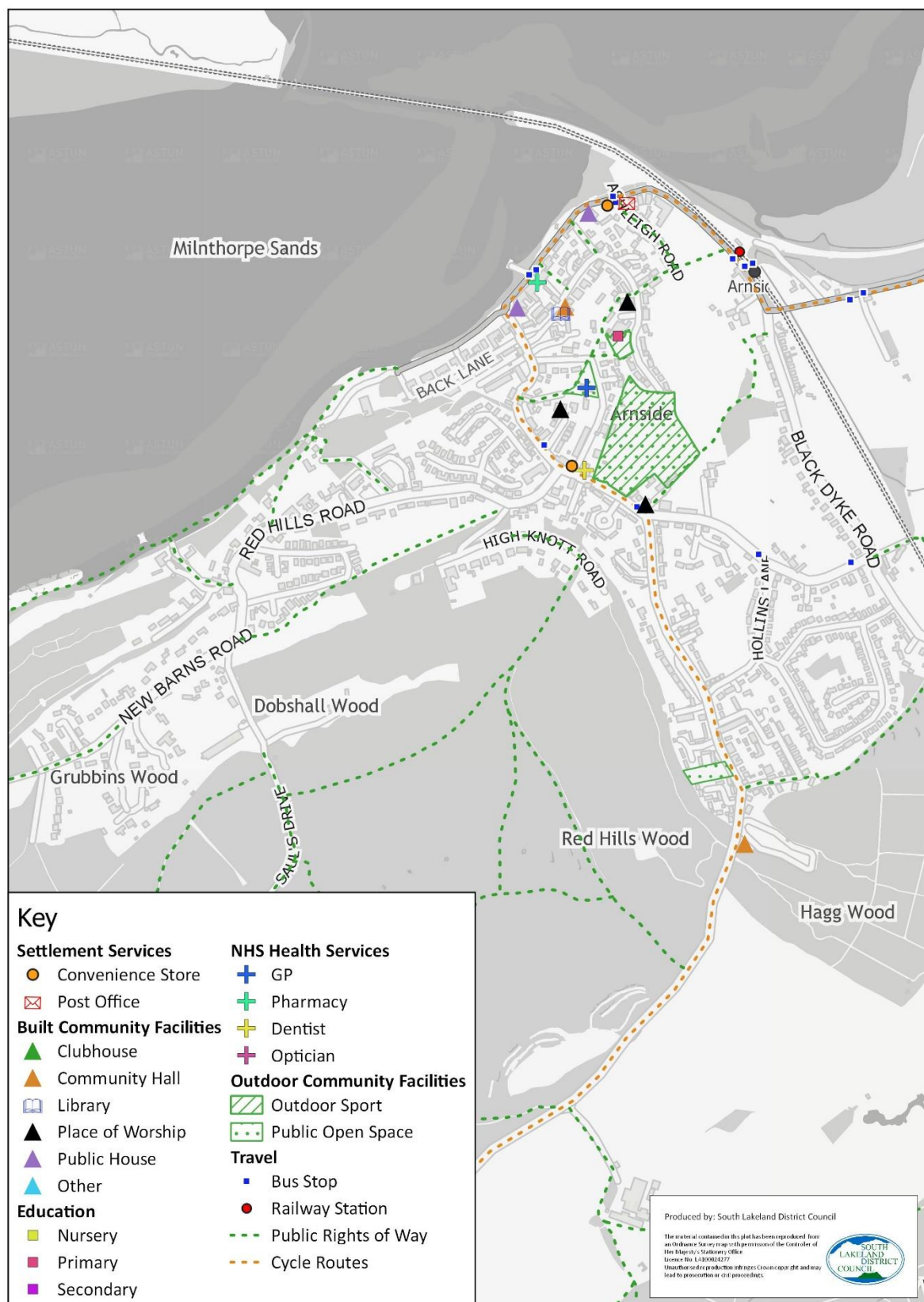


Figure 23: Arnside – Facilities and Services

Comments/Feedback on First Draft

6.1.2 The following comments on the first draft were provided by the local ward Councillor:

- Arnside Cemetery Chapel should be listed as a public building
- Broadband infrastructure is generally poor apart from where B4RN is being rolled out in places like Carr Bank and Storth.
- Mobile phone coverage is poor away from the flanks of the estuary.
- There are very few allocated sites in the AONB part of the ward, so the current infrastructure is adequate.

Accessibility to Key Services

Settlement: Arnside LSOA: E01019342	Medium employment centre	Primary School	Secondary School	Further Education	GP	Hospital	Food Store	Town Centre	Average for all Services	Overall Rating
% population with 30 minutes public transport/ walking	100	100	0	0	100	0	100	100	63	Fair
Average travel time by public transport/ walking in minutes	21	5	36	36	4	48	4	27	22	Good

Table 122: Arnside – Journey Time Statistics

6.2 Storth/Sandside (LSC)

Population

6.2.1 The 2018 mid-year estimate of the population of Storth/Sandside was 764 people. This is based on the combined population estimates for the following census output areas.

Census Output Area	2018 Population Estimate	Settlement
E00097759	226	Storth
E00097761	172	Storth

Census Output Area	2018 Population Estimate	Settlement
E00097756	275 (77)	Storth/Carr Bank (approx. 28% of properties in this area are in Storth)
E00097758	289	Storth
Total	764	Storth

Table 123: Storth/Sandside - Population

Facilities and Services within the Settlement

Service / Facility Category	Details
Convenience Shop	Post Office and Village Store
Post Office	Post Office
Health services	
Built community facility	Storth Village Hall Heron Hall Ship Inn
Outdoor community facility	Playing Field at Yans Lane Storth Primary School Playing Field
Educational Establishments	Storth C of E Primary School
High Speed Broadband	TBC
Bus Stops	cumdpdgj Ship Inn cumdgpga Sunny Ridge cumdgpja Ship Inn cumdwamg Sunny Ridge
Bus Routes and Frequencies	550 – Morecambe to Milnthorpe: Operates Tuesday only, 1 service. 551 – Arnsdale to Kirkby Lonsdale: Operates Thursday only 1 service per day (in each direction) 552 – Arnsdale to Kendal: Operates Wednesday and Friday only. 1 service per day.

Service / Facility Category	Details	
Railway Station		
Train Services		
Public rights of way	504031 504040 504039 504042	504038 504041 504043 504056
Cycle routes	Bay Cycleway (National Route 700)	

Table 124: Storth/Sandside – Facilities and Services

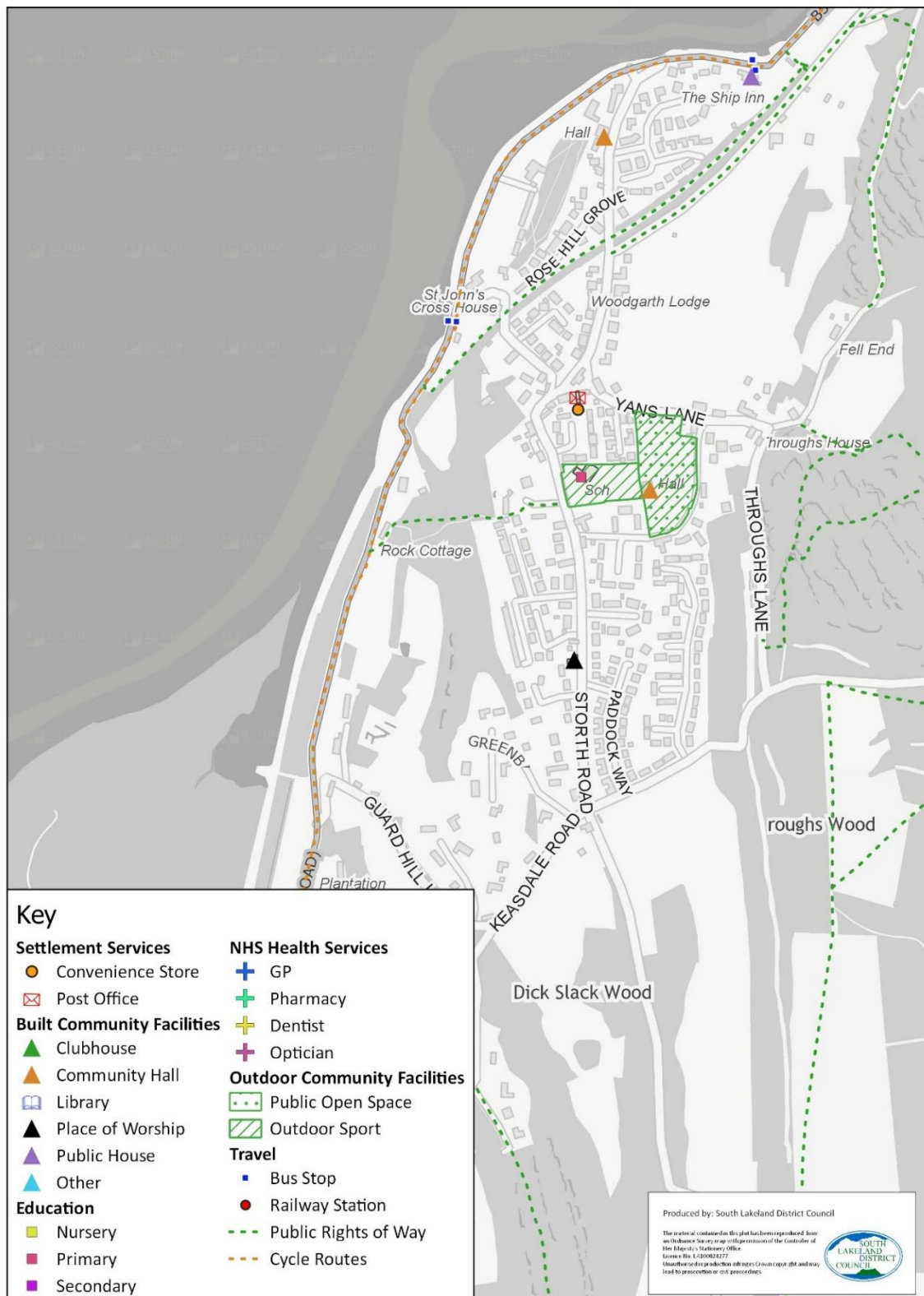


Figure 24: Storth/Sandside – Facilities and Services

Comments/Feedback on First Draft

6.2.2 The following comments on the first draft were provided by the local ward Councillor:

- Storth - Heron Hall on the playing field should be listed as a public building.
- Mobile phone coverage is poor away from the flanks of the estuary.
- There are very few allocated sites in the AONB part of the ward, so the current infrastructure is adequate.

Accessibility to Key Services

Settlement: Storth/Sandside LSOA: E01019341	Medium employment centre	Primary School	Secondary School	Further Education	GP	Hospital	Food Store	Town Centre	Average for all Services	Overall Rating
% population with 30 minutes public transport/ walking	81	100	0	0	100	0	100	32	52	Fair
Average travel time by public transport/ walking in minutes	23	13	43	42	12	55	10	33	29	Good

Table 125: Storth/Sandside – Journey Time Statistics

6.3 Beetham (Small Village)

Population

6.3.1 The 2018 mid-year estimate of the population of Beetham was 144 people. This is based on the population estimate for the following census output area.

Census Output Area	2018 Population Estimate	Settlement
E00097757	424 (144)	Beetham/Slackhead/Hale (inc Farleton) Approx 34% of properties in this area are in Beetham.
Total	144	Beetham

Table 126: Beetham – Population

Facilities and Services within the Settlement

Service / Facility Category	Details
Convenience Shop	
Post Office	
Health services	
Built community facility	Wheatsheaf (Public House) Heron Theatre St Michael's Church
Outdoor community facility	Beetham C of E Primary School grounds
Educational Establishments	Beetham C of E Primary School
High Speed Broadband	TBC
Bus Stops	cumdgpgt Heron Theatre cumdgpgp Primary School
Bus Routes and Frequencies	755 – Bowness/Kendal to Morecambe: Mondays to Sundays with 4 services per day.
Railway Station	
Train Services	
Public rights of way	504014 504015 504055 504009
Cycle routes	National Cycle Route 6

Table 127: Beetham – Facilities and Services

Comments/Feedback on First Draft

6.3.2 The following comments on the first draft were provided by the local ward Councilor:

- Broadband infrastructure is generally poor apart from where B4RN is being rolled out in places like Carr Bank and Storth.

- Mobile phone coverage is poor away from the flanks of the estuary.
- There are very few allocated sites in the AONB part of the ward, so the current infrastructure is adequate.

Accessibility to Key Services

Settlement: Beetham/ Slackhead LSOA: E01019343	Medium employment centre	Primary School	Secondary School	Further Education	GP	Hospital	Food Store	Town Centre	Average for all Services	Overall Rating
% population with 30 minutes public transport/ walking	100	100	0	0	100	0	100	0	50	Fair
Average travel time by public transport/ walking in minutes	21	8	42	40	20	59	19	41	31	Fair

Table 128: Beetham – Journey Time Statistics

6.4 Slackhead (Small Village)

Population

- 6.4.1 The 2018 mid-year estimate of the population of Slackhead was 236 people. This is based on the combined population estimates for the following census output areas.

Census Output Area	2018 Population Estimate	Settlement
E00097760	400 (164)	Beetham/Slackhead/Hale (inc Farleton) Approx 41% of properties in this area are in Slackhead.
E00097757	424 (72)	Beetham/Slackhead/Hale (inc Farleton) Approx 17% of properties in this area are in Slackhead.
Total	236	Slackhead

Table 129: Slackhead – Population

Facilities and Services within the Settlement

Service / Facility Category	Details
Convenience Shop	
Post Office	
Health services	
Built community facility	
Outdoor community facility	
Educational Establishments	
High Speed Broadband	TBC
Bus Stops	
Bus Routes and Frequencies	
Railway Station	
Train Services	
Public rights of way	504016 504007
Cycle routes	National Cycle Route 6

Table 130: Slackhead – Facilities and Services

Comments/Feedback on First Draft

6.4.2 The following comments on the first draft were provided by the local ward Councilor:

- Broadband infrastructure is generally poor apart from where B4RN is being rolled out in places like Carr Bank and Storth.
- Mobile phone coverage is poor away from the flanks of the estuary.

- There are very few allocated sites in the AONB part of the ward, so the current infrastructure is adequate.

Accessibility to Key Services

Settlement: Beetham/ Slackhead LSOA: E01019343	Medium employment centre	Primary School	Secondary School	Further Education	GP	Hospital	Food Store	Town Centre	Average for all Services	Overall Rating
% population with 30 minutes public transport/ walking	100	100	0	0	100	0	100	0	50	Fair
Average travel time by public transport/ walking in minutes	21	8	42	40	20	59	19	41	31	Fair

Table 131: Slackhead – Facilities and Services

6.5 Carr Bank (Small Village)

Population

- 6.5.1 The 2018 mid-year estimate of the population of Carr Bank was 198 people. This is based on the combined population estimates for the following census output areas.

Census Output Area	2018 Population Estimate	Settlement
E00097756	275 (198)	Storth/Carr Bank (approx. 72% of properties in this area are in Carr Bank)
Total	198	Carr Bank

Table 132: Carr Bank - Population

Facilities and Services within the Settlement

Service / Facility Category	Details
Convenience Shop	
Post Office	

Service / Facility Category	Details
Health services	
Built community facility	
Outdoor community facility	
Educational Establishments	
High Speed Broadband	TBC
Bus Stops	cumdwama Garden centre cumdgpgd Garden centre
Bus Routes and Frequencies	550 – Morecambe to Milnthorpe: Operates Tuesday only, 1 service. 551 – Arnsdale to Kirkby Lonsdale: Operates Thursday only 1 service per day (in each direction) 552 – Arnsdale to Kendal: Operates Wednesday and Friday only. 1 service per day.
Railway Station	
Train Services	
Public rights of way	504030 504027
Cycle routes	Bay Cycleway (National Route 700)

Table 133: Carr Bank – Facilities and Services

Comments/Feedback on First Draft

6.5.2 The following comments on the first draft were provided by the local ward Councillor:

- Mobile phone coverage is poor away from the flanks of the estuary.
- There are very few allocated sites in the AONB part of the ward, so the current infrastructure is adequate.

Accessibility to Key Services

Settlement: Carr Bank LSOA: E01019341	Medium employment centre	Primary School	Secondary School	Further Education	GP	Hospital	Food Store	Town Centre	Average for all Services	Overall Rating
% population with 30 minutes public transport/ walking	81	100	0	0	100	0	100	32	52	Fair
Average travel time by public transport/ walking in minutes	23	13	43	42	12	55	10	33	29	Good

Table 134: Carr Bank – Journey Time Statistics

6.6 Hale (Small Village)

Population

- 6.6.1 The 2018 mid-year estimate of the population of Hale was 114 people. This is based on the combined population estimates for the following census output areas.

Census Output Area	2018 Population Estimate	Settlement
E00097760	400 (84)	Beetham/Slackhead/Hale (inc Farleton) Approx 21% of the properties in this area are in Hale.
E00097757	424 (30)	Beetham/Slackhead/Hale (inc Farleton) Approx 7% of the properties in this area are in Hale.
Total	114	Hale

Table 135: Hale – Population

Facilities and Services within the Settlement

Service / Facility Category	Details
Convenience Shop	
Post Office	
Health services	
Built community facility	Tavern at Hale
Outdoor community facility	Hale Bowling Club
Educational Establishments	
High Speed Broadband	TBC
Bus Stops	cumdtmjd Kings Arms Hotel cumdtmja Kings Arms Hotel
Bus Routes and Frequencies	755 – Bowness/Kendal to Morecambe: Mondays to Sundays with 4 services per day.
Railway Station	
Train Services	
Public rights of way	504002 504006 504007 504008
Cycle routes	

Table 136: Hale – Facilities and Services

Comments/Feedback on First Draft

6.6.2 The following comments on the first draft were provided by the local ward Councillor:

- Broadband infrastructure is generally poor apart from where B4RN is being rolled out in places like Carr Bank and Storth.

- Mobile phone coverage is poor away from the flanks of the estuary.
- There are very few allocated sites in the AONB part of the ward, so the current infrastructure is adequate.

Accessibility to Key Services

Settlement: Hale LSOA: E01019343	Medium employment centre	Primary School	Secondary School	Further Education	GP	Hospital	Food Store	Town Centre	Average for all Services	Overall Rating
% population with 30 minutes public transport/ walking	100	100	0	0	100	0	100	0	50	Fair
Average travel time by public transport/ walking in minutes	21	8	42	40	20	59	19	41	31	Fair

Table 137: Hale – Journey Time Statistics

7 Summary of Findings

7.1 Introduction

- 7.1.1 This section considers whether on the basis of this audit, the key and local service centres still meet the definitions which are used in the existing Local Plan. It should be noted at the outset that the assessment of transport accessibility differs from that used in the preparation of the existing Local Plan, as we no longer have access to the detailed modeling software used previously. As explained below the nearest available comparison has been used using the Department for Transport's official Journey Time Statistics.
- 7.1.2 This assessment will help inform a review of the settlement hierarchy in the Local Plan Review, in terms of the definitions of the hierarchy of service centres and the named places within each tier.

7.2 Key Service Centres

- 7.2.1 The current Local Plan sets out the following criteria for settlements to be classified as Key Service Centres:

- Good public transport links to outlying settlements
- A primary school, secondary school, library, doctor's surgery and a town centre function providing at least a post office and 2,000 sq m of retail floorspace
- A population of more than 1,500

Settlement	Accessibility to 8 Key Services by public transport/ walking (average travel time in mins)	Accessibility Category (ave travel time)	Primary School	Secondary School	Library	GP Surgery	Town Centre including Post Office	Population (MYE 2018 census areas)	Current KSC Criteria Met?
Kirkby Lonsdale	10	Excellent	Yes	Yes	Yes	Yes	Yes	1603	Yes
Milnthorpe	19	Good	Yes	Yes	Yes	Yes	Yes	1681	Yes
Grange-over-Sands	23	Good	Yes	No	Yes	Yes	Yes	4259	No

Table 138: Key Service Centres Accessibility Summary

- 7.2.2 Grange-over-Sands doesn't strictly meet the criteria as there is not a secondary school within the town itself. The nearest secondary school however is Cartmel Priory School located approximately 2 miles away in Cartmel.

7.3 Local Service Centres

7.3.1 The current Local Plan sets out the following criteria for settlements to be classified as Local Service Centres:

- A local shop (selling items to meet everyday needs)
- A primary school
- 'Good' public transport links – 30 minute public transport journey of a GP, a hospital, a primary school, a secondary school, areas of employment and a major retail centre

7.3.2 The table below summarises the settlement assessments with respect to the LSC criteria. The accessibility criteria does not match the exact criteria used to define the LSCs at the time the Core Strategy was prepared. This is because we no longer have access to the transport modelling software used. As the nearest available assessment method, we have therefore used the Department for Transport's Journey Time Statistics to measure travel times to 8 key services as explained in section 0. These statistics are for the general local area (the Lower Super Output Area) so the point at which the journey time is calculated from might not always match the exact location of the individual settlement. The statistics measure access to medium sized employment centres, primary and secondary, further education colleges, GPs, hospitals, foodstores, and town centres.

Settlement	Food Shop	Primary School	Accessibility to 8 Key Services by public transport/ walking (average travel time in mins)	Accessibility Category (ave travel time)	Current LSC Criteria Met?
Levens	Yes	Yes	23	Good	Yes
Burton in Kendal	Yes	Yes	27	Good	Yes
Holme	Yes	Yes	27	Good	Yes
Kirkby in Furness	Yes	Yes	29	Good	Yes
Flookburgh/Cark	Yes	Yes	28	Good	Yes
Arnside	Yes	Yes	22	Good	Yes
Storth/Sandside	Yes	Yes	29	Good	Yes
Oxenholme	Yes	No	14	Excellent	No
Natland	No	Yes	31	Fair	No
Burneside	Yes	Yes	37	Fair	No
Endmoor	Yes	Yes	42	Fair	No
Swarthmoor	No	Yes	22	Good	No
Greenodd/ Penny Bridge	Yes	Yes	32	Fair	No
Great and Little Urswick	No	Yes	39	Fair	No
Broughton in Furness	Yes	Yes	76	Poor	No
Allithwaite	Yes	Yes	38	Fair	No
Cartmel	Yes	Yes	38	Fair	No

Table 139: Local Service Centre Accessibility Summary

7.3.3 The following settlements appear to no longer meet the LSC definition based on the existing criteria:

Oxenholme

- 7.3.4 Oxenholme does not meet the criteria as there is no primary school within the village itself. The nearest primary schools are however St Mark's in Natland (approximately 1km from the centre of Oxenholme) and Heron Hill in Kendal (approximately 2.5km).

Natland

- 7.3.5 Natland no longer meets the criteria as it no longer has a village store since it was converted to a tea room. It very narrowly misses the accessibility criteria with an average travel time of 31 minutes. However the start point for the journey time statistics for this area were calculated from a point slightly further south from the village which will likely have skewed the results negatively as it is further from Kendal and a number of the services.

Burneside

- 7.3.6 Burneside does not meet the criteria due to the average travel time to key services. This is a slightly surprising result given that Burneside is only approximately 2km from Kendal where most of the key services are found, and given that the village has a railway station and bus service. However the train service does not provide a frequent service during the time window the statistics have been calculated on (Tuesdays between 7am and 10am) which could have affected the results, and the bus service is approximately hourly. Additionally the results for Burneside show a travel time of 32 minutes to a food store which does not appear to take into account that there is a convenience store within the village.

Endmoor

- 7.3.7 Endmoor does not appear to meet the criteria due to the average travel time by walking/public transport to key services. The journey time statistics do not appear however to recognise that there is a primary school within Endmoor as a travel time of 41 minutes is provided.

Swarthmoor

- 7.3.8 Swarthmoor does not meet the LSC criteria as it does not have a local food shop.

Greenodd/ Penny Bridge

- 7.3.9 Greenodd/Penny Bridge does not meet the LSC criteria as it narrowly exceeds the 30 minute average travel time to key services by public transport/walking, but at 32 minutes this is marginal.

Great and Little Urswick



- 7.3.10 Great and Little Urswick do not meet the LSC criteria due to a lack of a local food shop, and the average public transport/walking travel time to key services exceeding 30 minutes.

Broughton in Furness

- 7.3.11 Broughton in Furness does not meet the LSC criteria as it does not have any public transport meaning average travel times to key services exceed 30 minutes as only a number of the key services are within the settlement itself and the others are inaccessible by public transport.



Allithwaite and Cartmel

- 7.3.12 Allithwaite and Cartmel do not meet the LSC criteria as they exceed the 30 minute average travel time to key services by public transport/walking. They are both within the same LSOA and have the same average travel time of 38 minutes. The point at which the journey times are calculated using the DfT journey time statistics lies between Allithwaite and Cartmel so does not directly align with either settlement.