

Employment Land Study 2012 – Addendum

Appendix 3

Sites Assessed: Location and Site Boundaries

Employment Land Study Review 2012

Locations of all available employment land sites in South Lakeland District

5/007 & E13M: Station yard, Milnthorpe

5/009 & M683sM: Storth

5/017 & EN25: Flookburgh

5/211, MN14M & MN14#: Clawthorpe

E4M: adjacent to Scroggs Wood & 5/073: Shenstone, south of Kendal

E15M & EN57#: Leasgill

E18M: Elmsfield, Holme

E23K#, 5/002 & EN28M: Northern Kendal

E31M, 5/204 & R97M: Southern Kendal

E32M: Burneside

E33 & 5/0278: Kendal Fell Quarry

E50# & E51#: Near Brettargh Halt

E56#, E57# & EN18#: M6 Junction 36

E61# & E62#: Deepthwaite

EN10 & EN11: Gilpin Bridge

EN15M: Green Dragon Farm, Burton in Kendal

EN17M: near Dallam Tower

EN33# & 5/167: Gatebeck

EN34M: Grange over Sands

EN35M: North Lonsdale Road, Ulverston
& R283M: The Elms Training Centre, Ulverston

EN42: Cark

EN43: Greenside Farm, Hincaster

EN59#: Land at Endmoor plantation, West of Gilpin Tarn
& M41M: Fields north of St Patrick's School, Endmoor

M2M: Oxenholme

M9M1 & M9M2: Milnthorpe

M28, MN31#, M26 & E30: Canal Head, Ulverston

M35M: Holme

M378M, R383 & R381: Grange over Sands

MN6#, M11M, M11M# & E19#: West Lodge and
surrounding land, Stone Cross, Ulverston

MN19: Old Council Refuse Tip,
Foxfield Road, Broughton in Furness

MN21: Grange over Sands

MN24 & R640: Kirkby Lonsdale

MN25M: Kents Bank

MN30#: East of Fitz Bridge, Ulverston
EN22, 5/1006A: Low Mill Tannery, Ulverston
& EN23, 5/016B: West End Lane, Ulverston

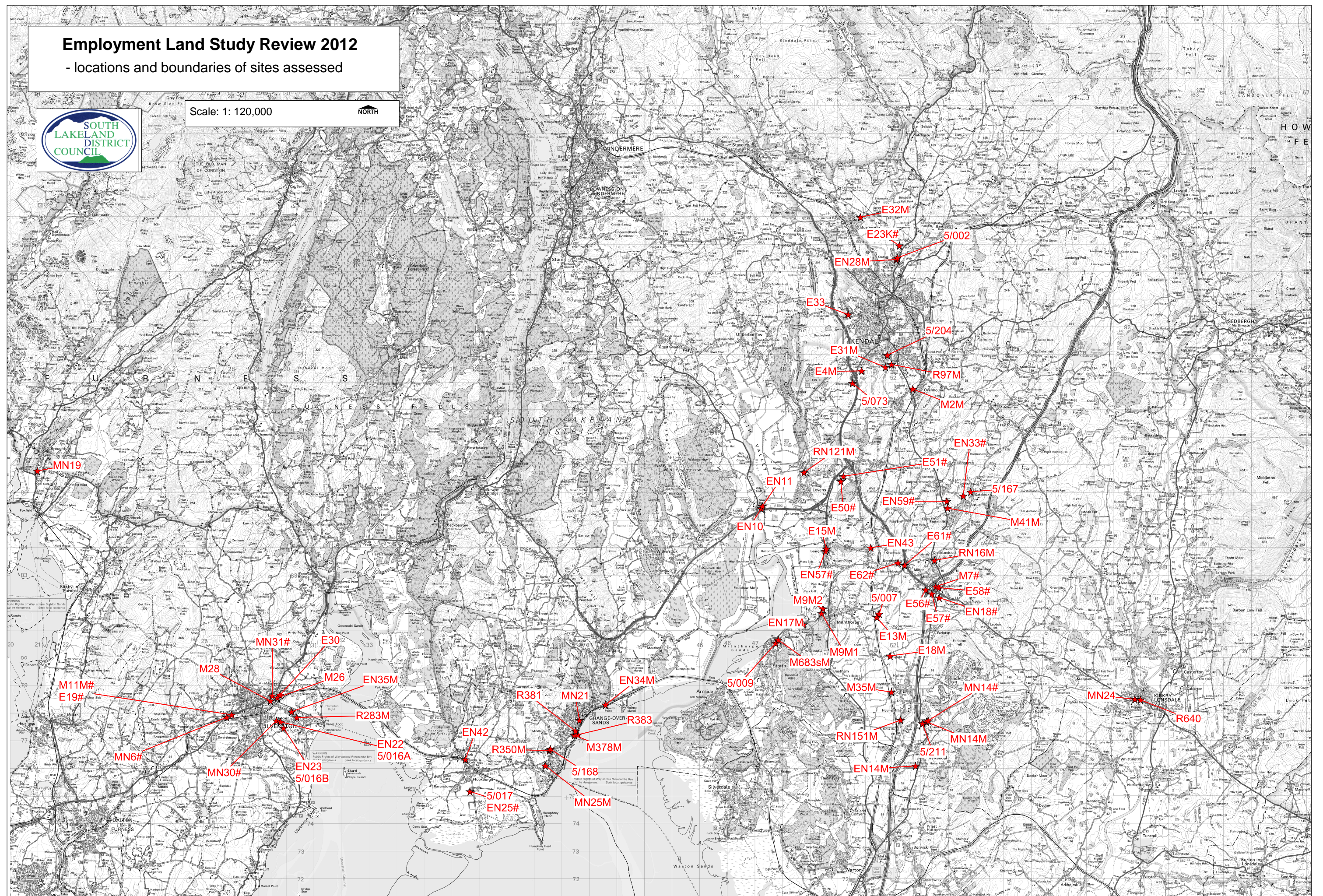
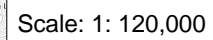
R350M & 5/168: Grange over Sands

RN16M: Crooklands

RN121M: redundant stables to the north of Levens

RN151M: Holme Mills

- locations and boundaries of sites assessed



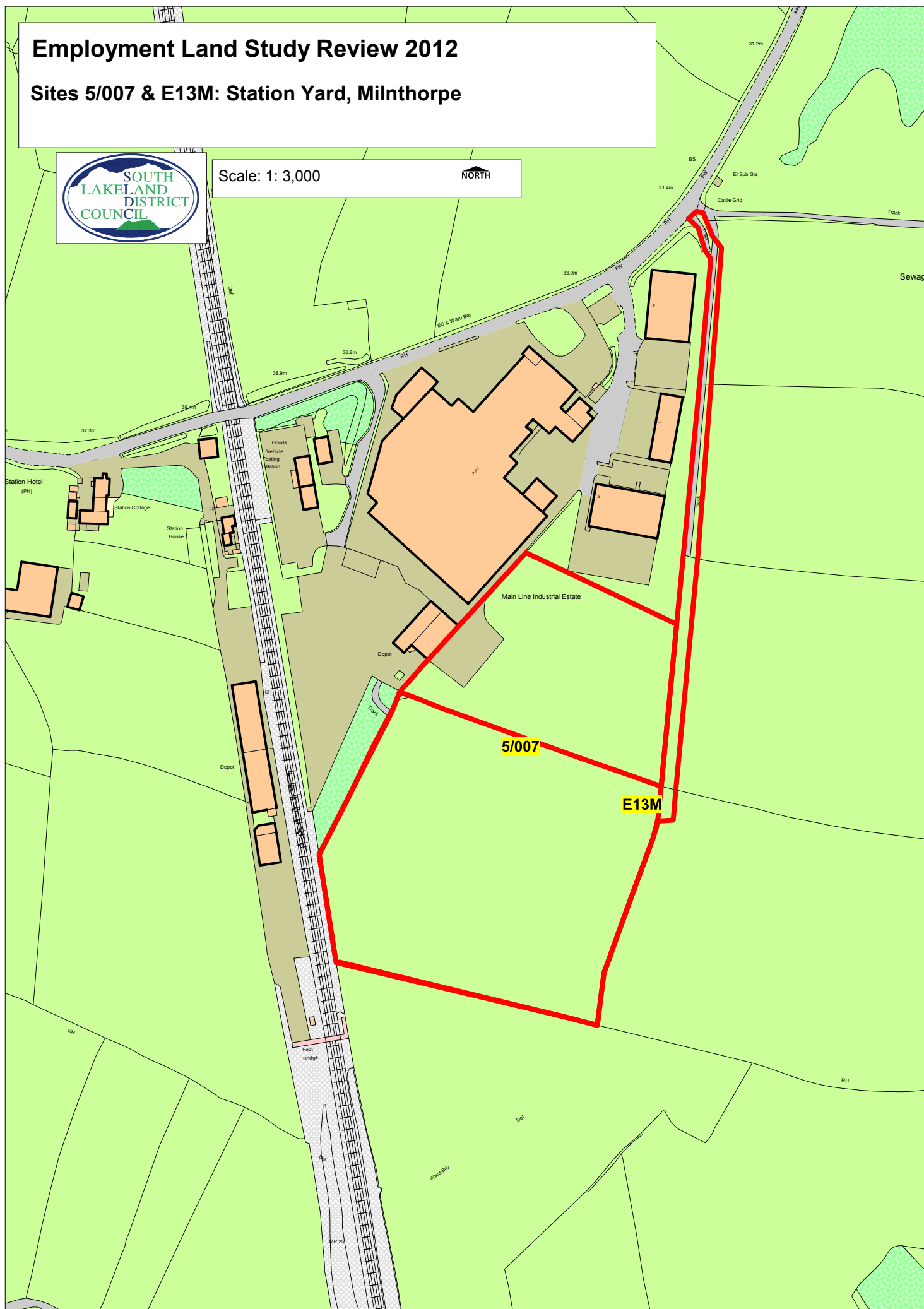
Employment Land Study Review 2012

Sites 5/007 & E13M: Station Yard, Milnthorpe



Scale: 1: 3,000

NORTH



Employment Land Study Review 2012

Sites 5/009 & M683sM: Storth



Scale: 1: 3,000



Employment Land Study Review 2012

Sites 5/017 & EN25: Flookburgh



Scale: 1: 1,500

NORTH

Field Approach
Business Park

Collects Drain

Garage
and
Depot

Wks

Posts

Works

Tks

El Sub
Sta

Depot

Will
Car

TCB

Joinery
Shop

5/017

EN25

Main Drain

Cut Bridge

6.0m

5.9m

6.3m

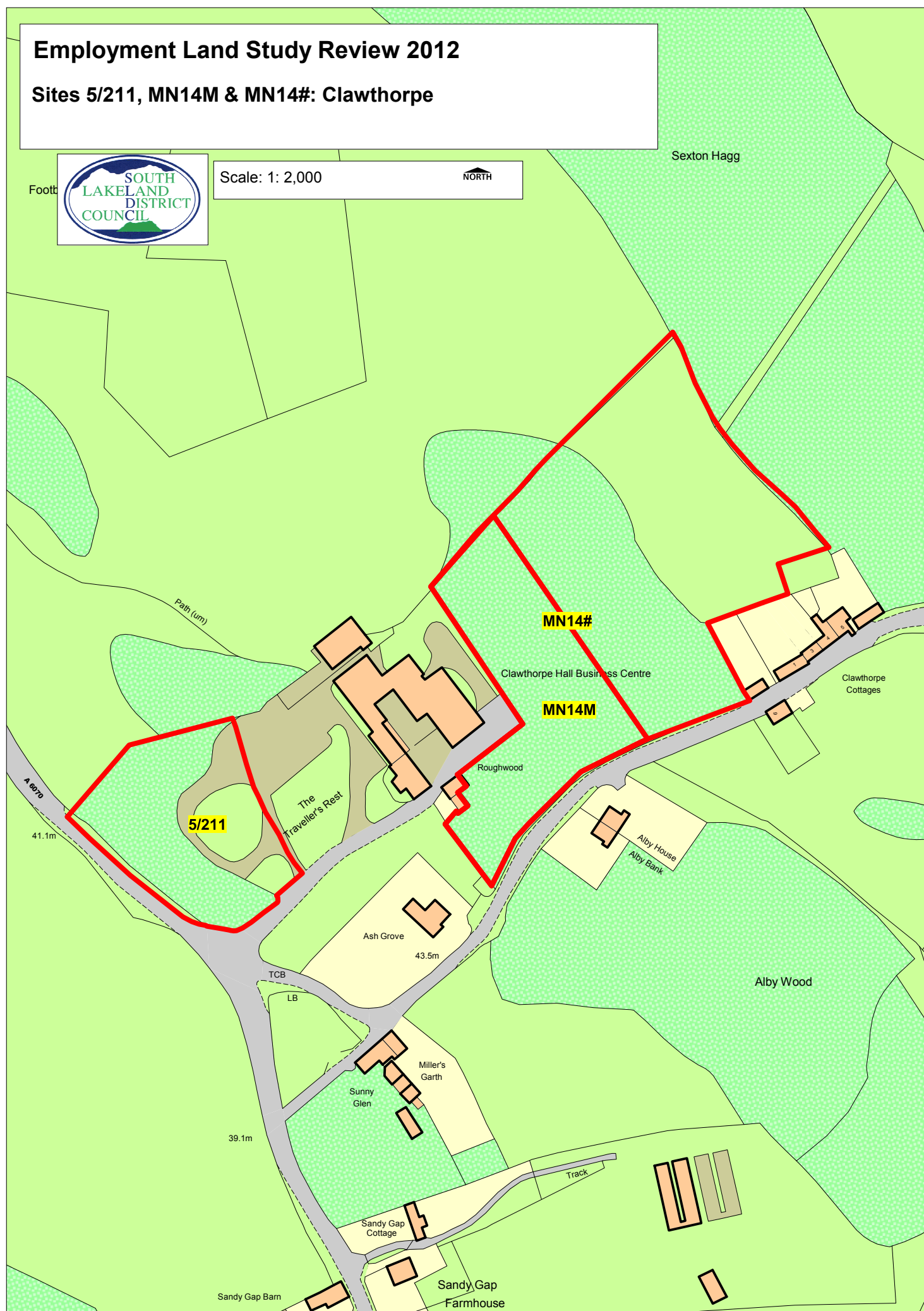
Employment Land Study Review 2012

Sites 5/211, MN14M & MN14#: Clawthorpe



Scale: 1: 2,000

NORTH



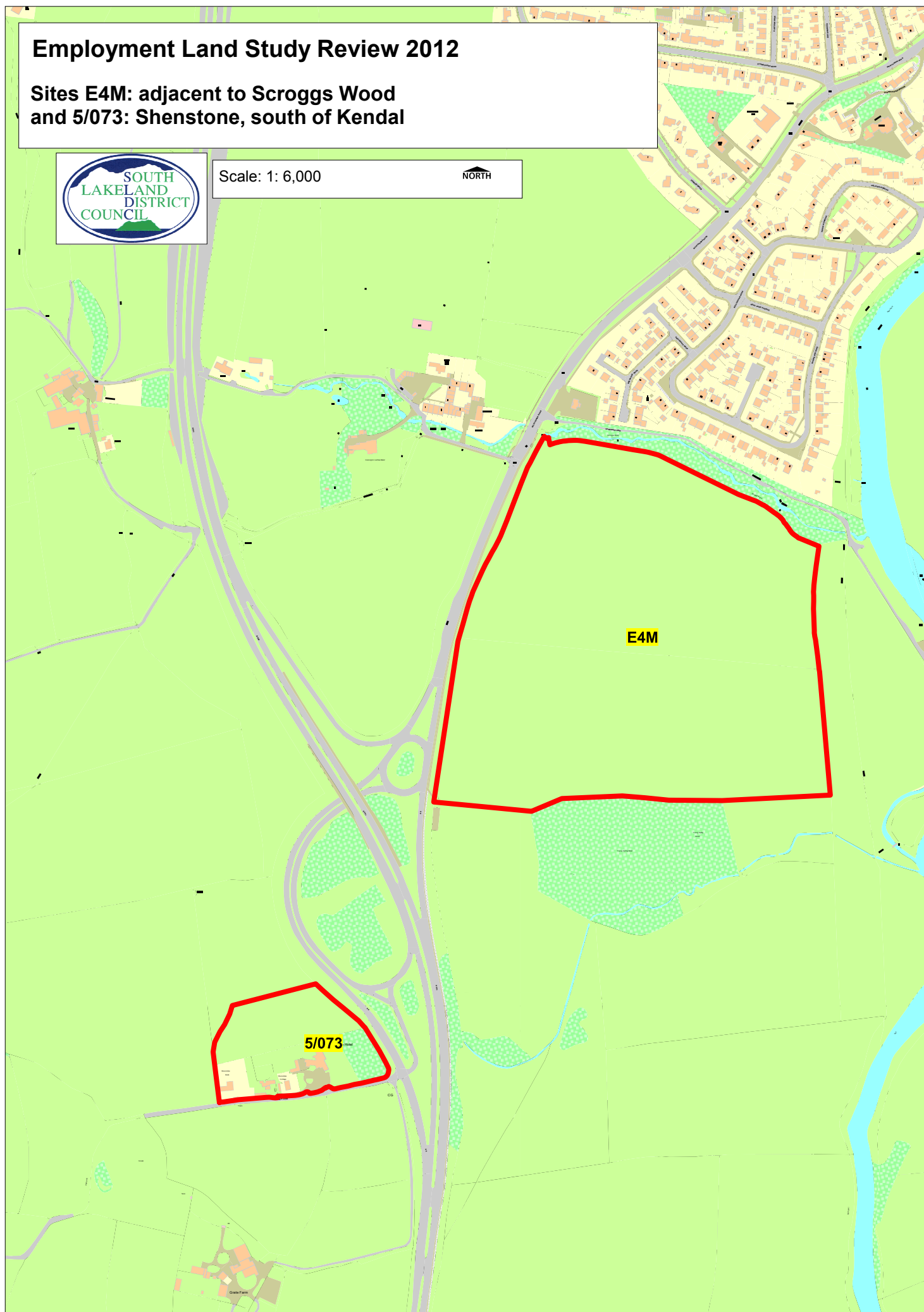
Employment Land Study Review 2012

**Sites E4M: adjacent to Scroggs Wood
and 5/073: Shenstone, south of Kendal**



Scale: 1: 6,000

NORTH



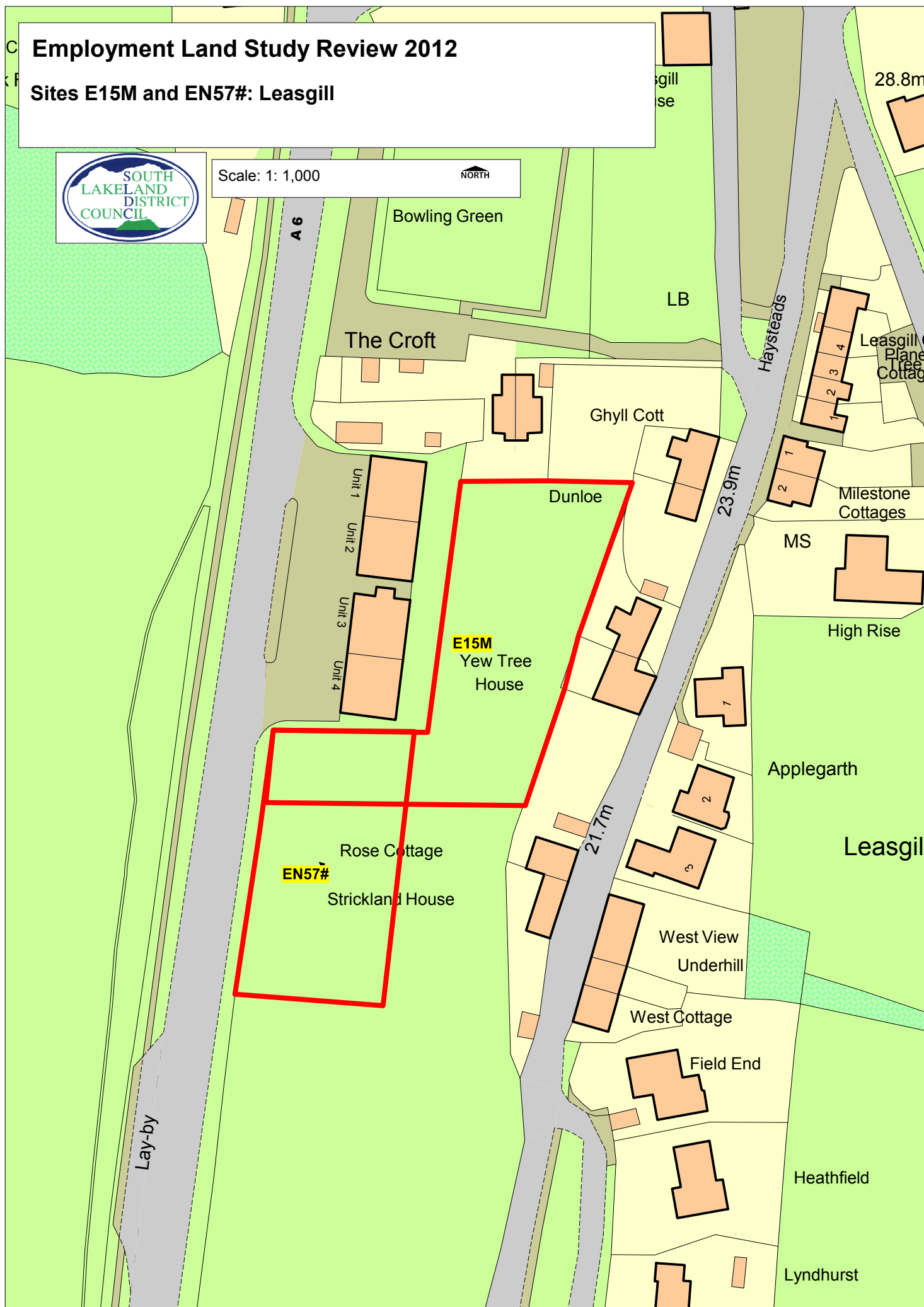
Employment Land Study Review 2012

Sites E15M and EN57#: Leasgill



Scale: 1: 1,000

NORTH

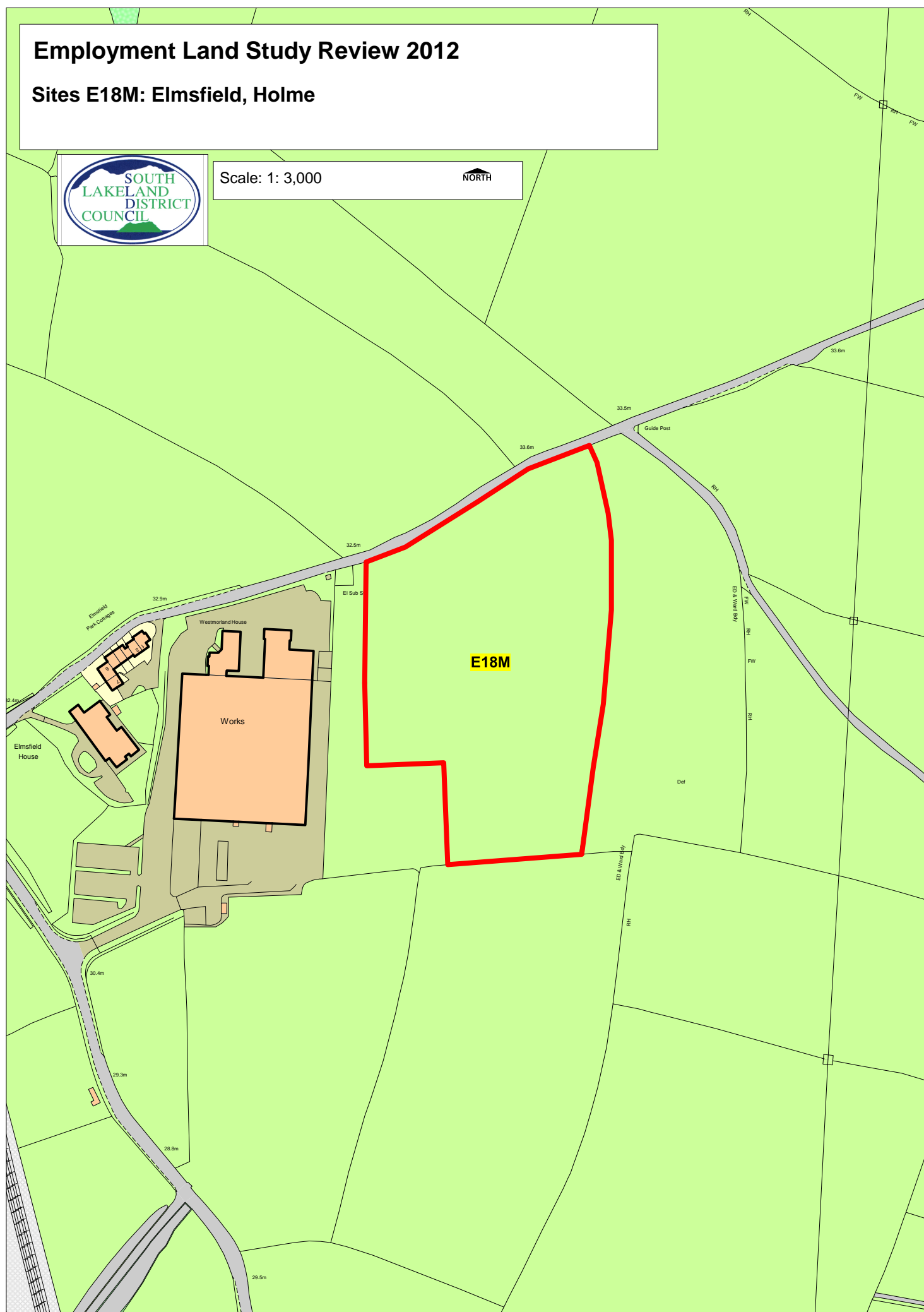


Employment Land Study Review 2012

Sites E18M: Elmsfield, Holme



Scale: 1: 3,000



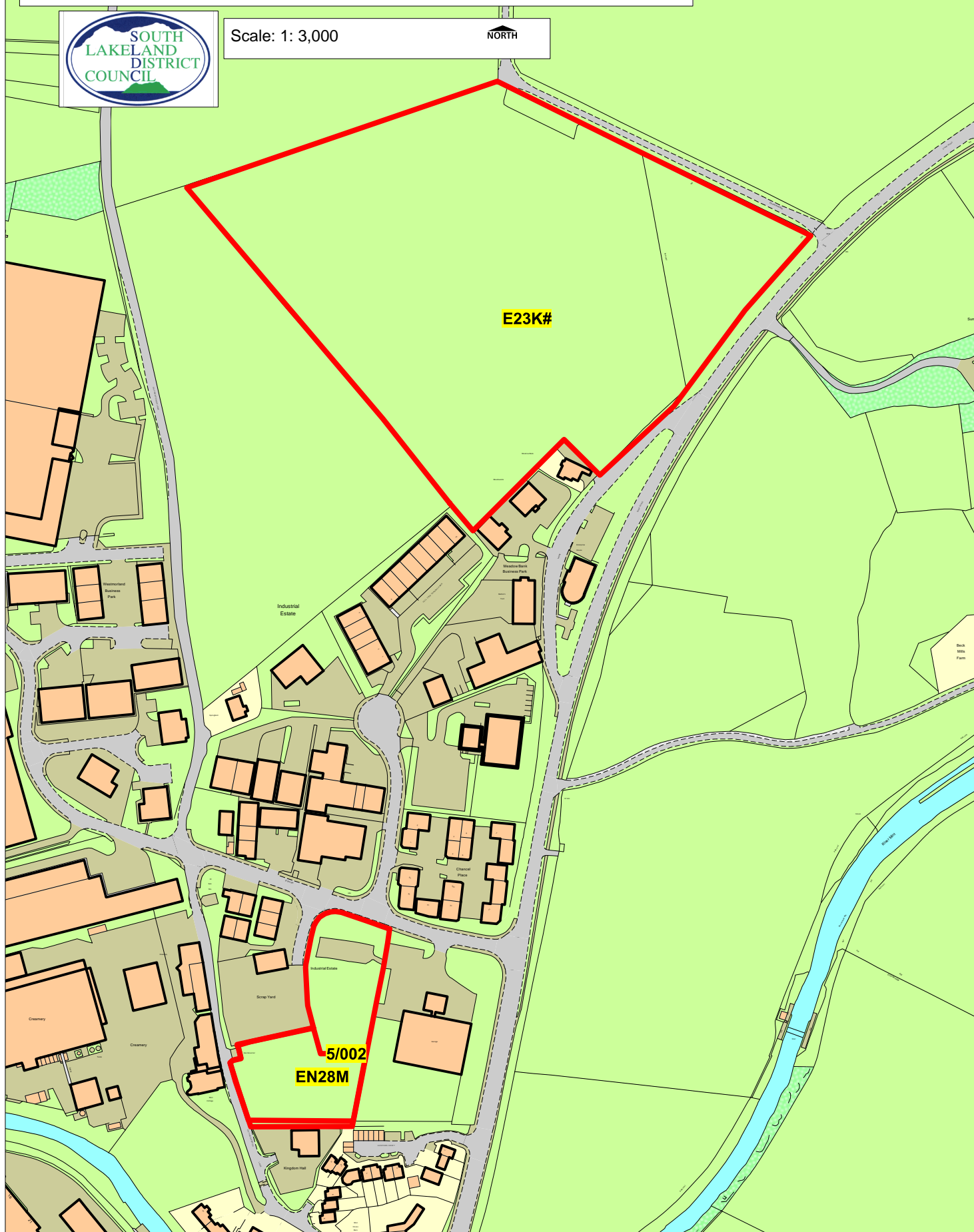
Employment Land Study Review 2012

Sites E23K#, 5/002 and EN28M: Northern Kendal

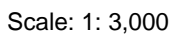


Scale: 1: 3,000

NORTH



Sites E31M, 5/204 and R97M: Southern Kendal



5/204

R97M

E31M

Employment Land Study Review 2012

Sites E32M: Burneside



Scale: 1: 2,000



Employment Land Study Review 2012

Sites E33 and 5/0278: Kendal Fell Quarry



Scale: 1: 1,500



Sites E50# and E51#: Near Brettargh Halt



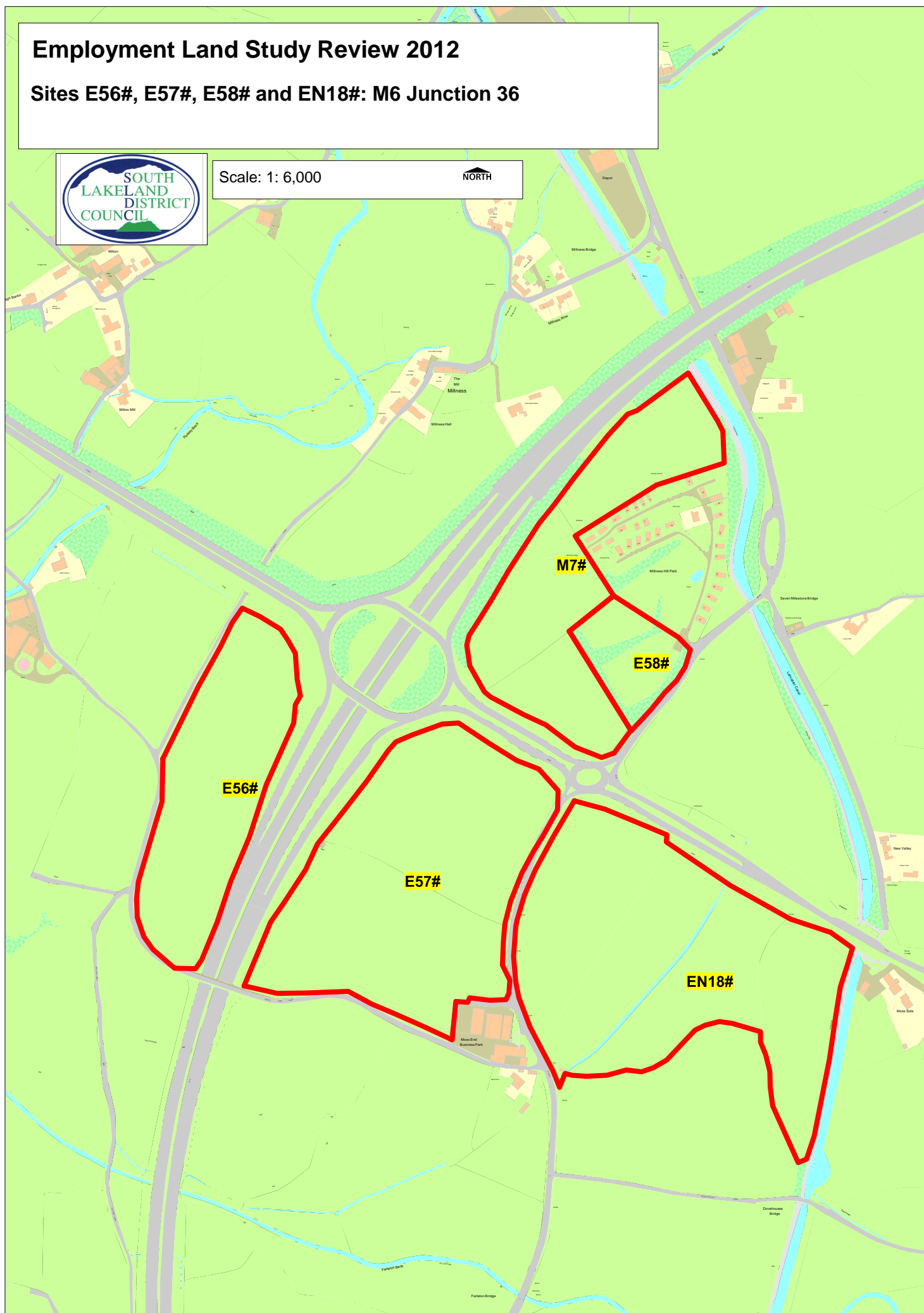
Employment Land Study Review 2012

Sites E56#, E57#, E58# and EN18#: M6 Junction 36



Scale: 1: 6,000

NORTH



Employment Land Study Review 2012

Sites E61# and E62#: Deepthwaite



Scale: 1: 3,000



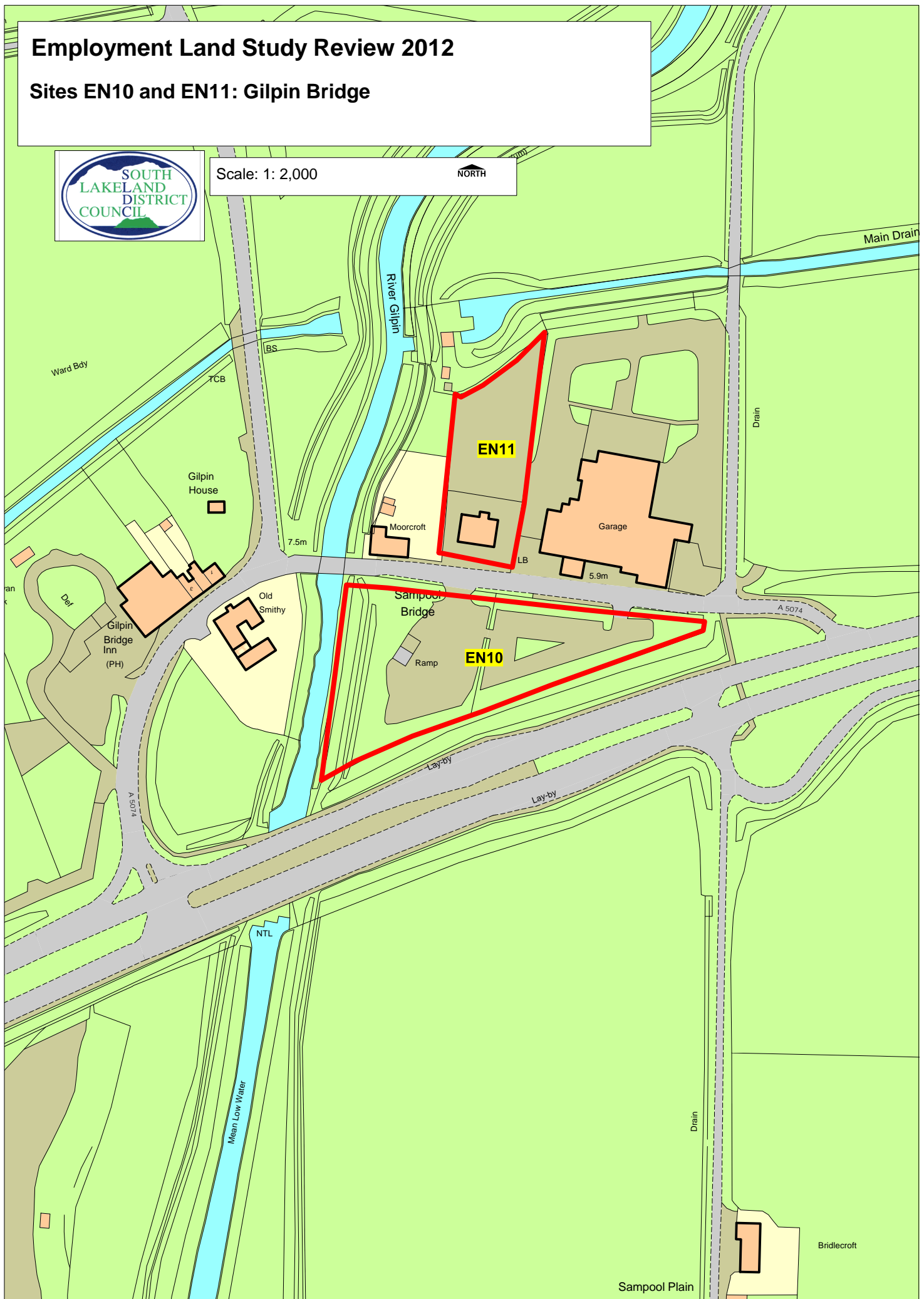
Employment Land Study Review 2012

Sites EN10 and EN11: Gilpin Bridge



Scale: 1: 2,000

NORTH



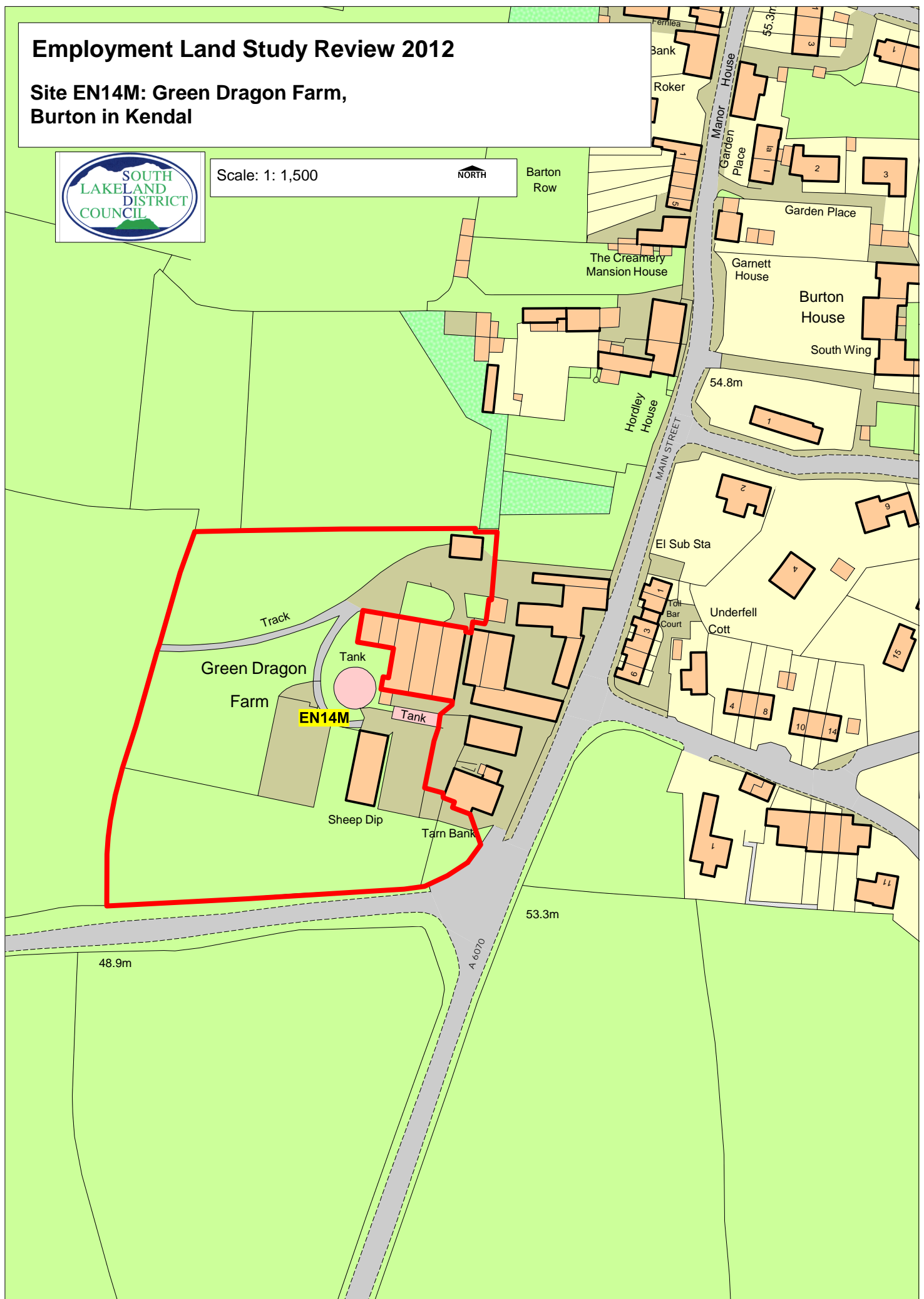
Employment Land Study Review 2012

Site EN14M: Green Dragon Farm,
Burton in Kendal



Scale: 1: 1,500

NORTH



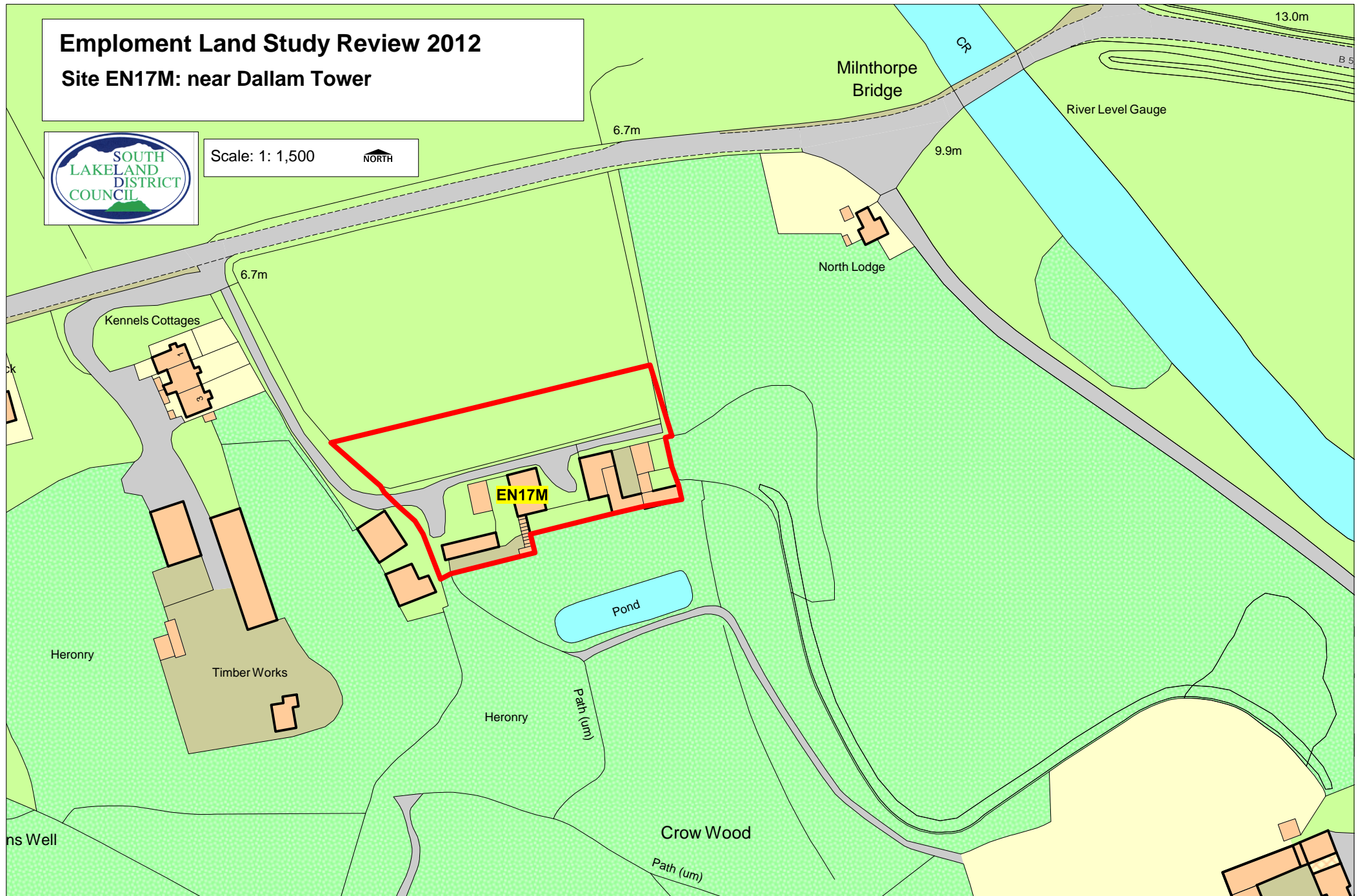
Emploment Land Study Review 2012

Site EN17M: near Dallam Tower



Scale: 1: 1,500

NORTH

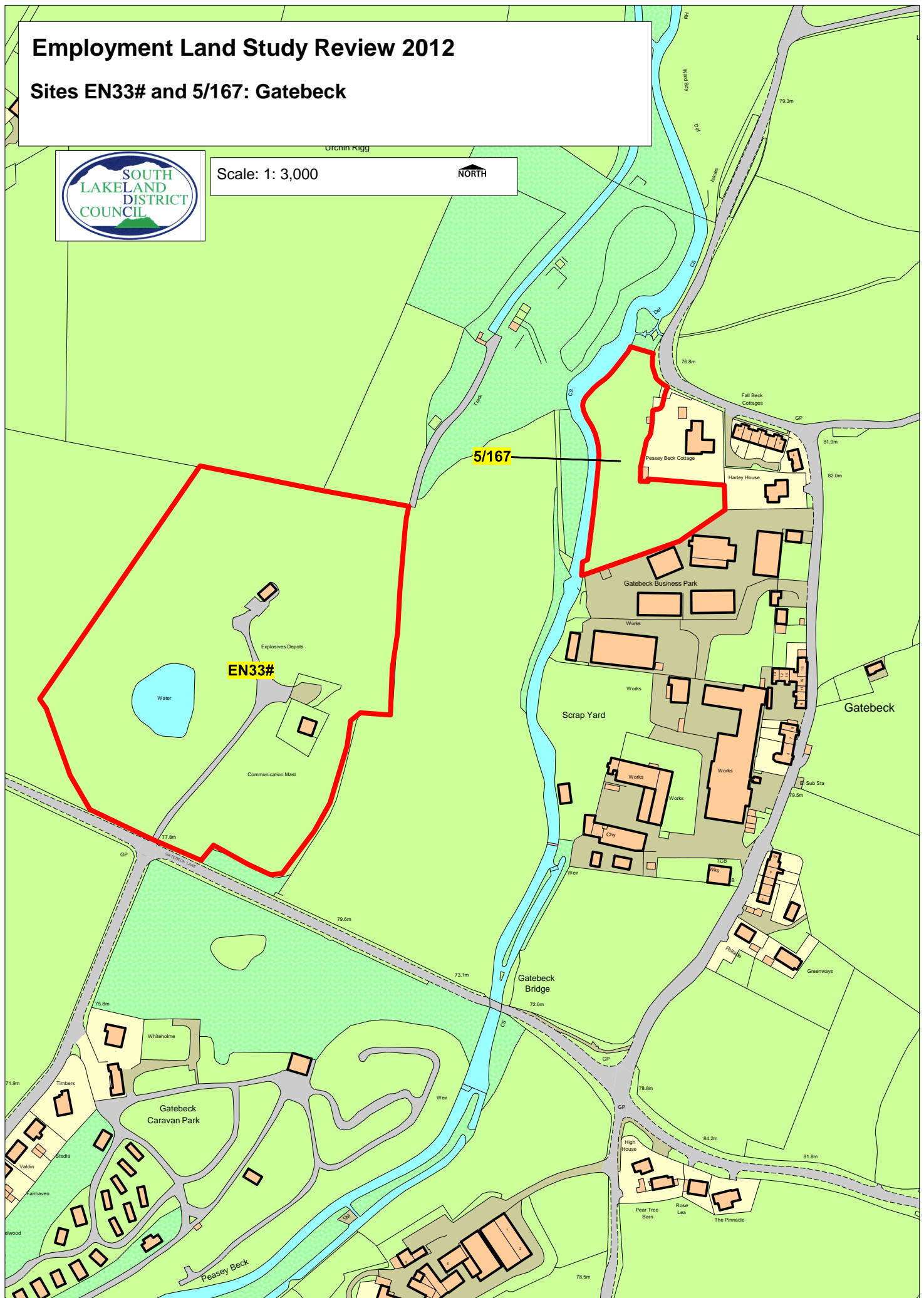


Employment Land Study Review 2012

Sites EN33# and 5/167: Gatebeck



Scale: 1: 3,000



Employment Land Study Review 2012

Site EN34M: Grange over Sands



Scale: 1: 2,000

NORTH

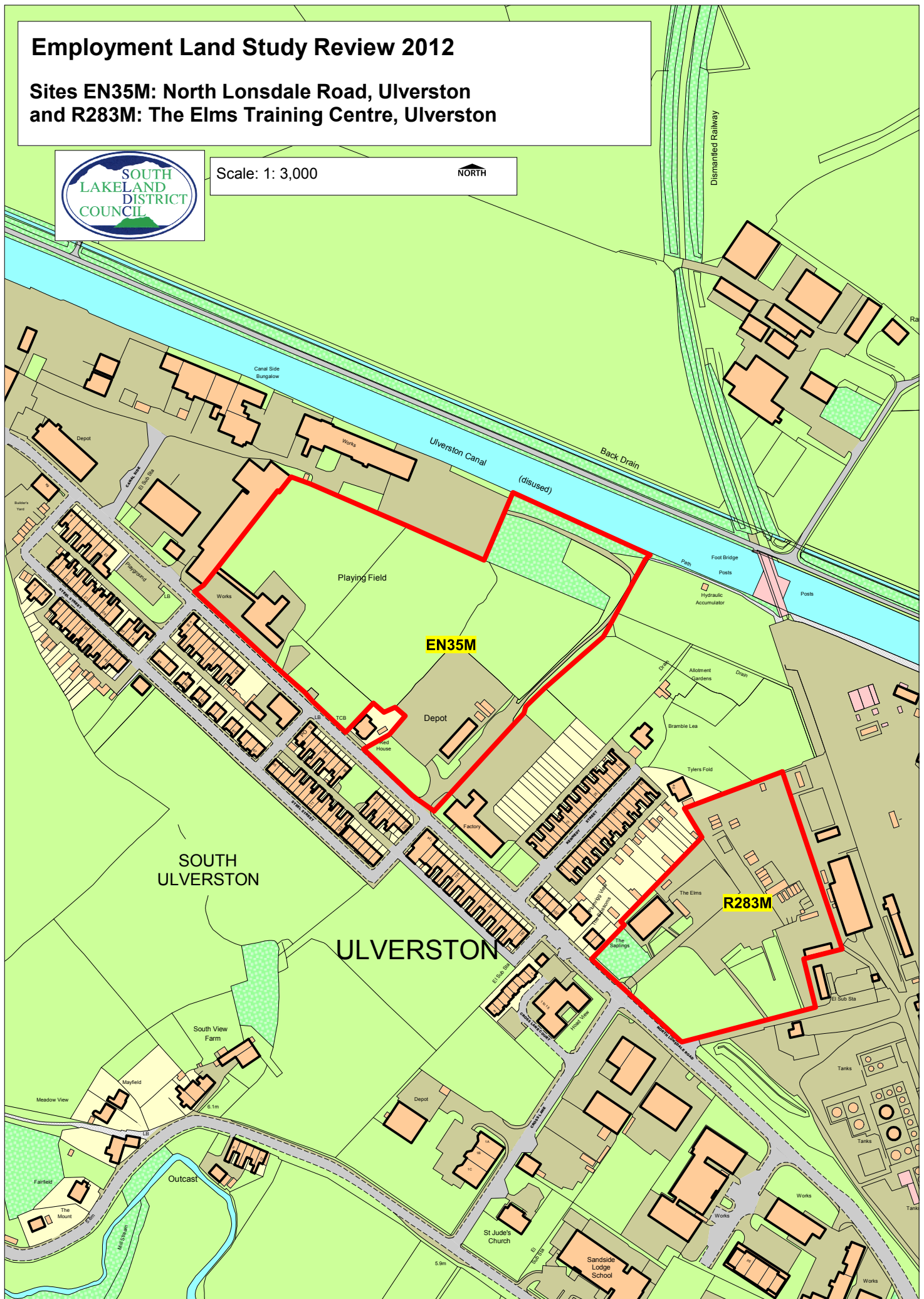


Employment Land Study Review 2012

Sites EN35M: North Lonsdale Road, Ulverston
and R283M: The Elms Training Centre, Ulverston



Scale: 1: 3,000



Employment Land Study Review 2012

Site EN42: Cark



Scale: 1: 2,000



Cark



Employment Land Study Review 2012

Site EN43: Greenside Farm, Hincaster



Scale: 1: 1,500

NORTH



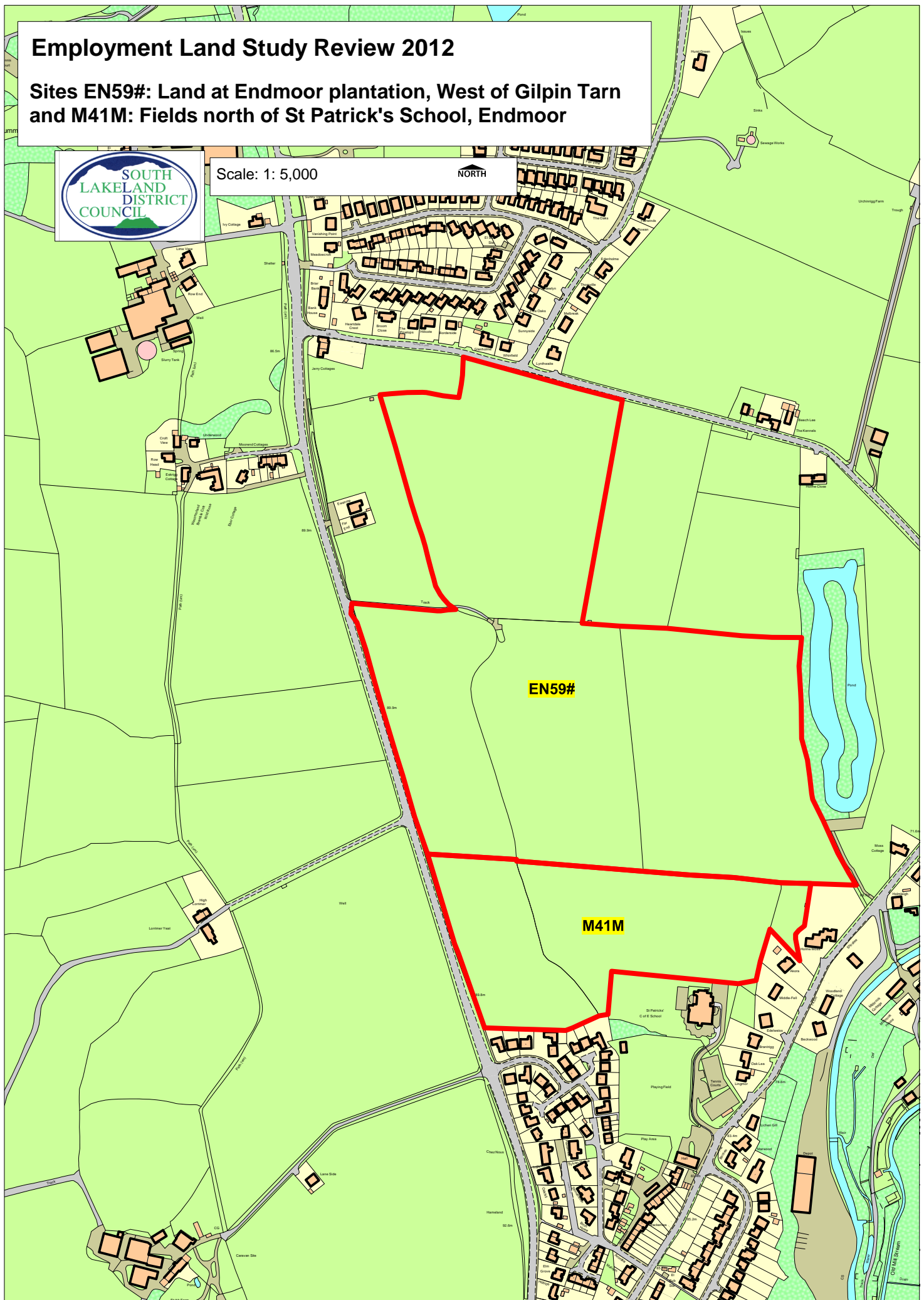
Employment Land Study Review 2012

Sites EN59#: Land at Endmoor plantation, West of Gilpin Tarn and
M41M: Fields north of St Patrick's School, Endmoor



Scale: 1: 5,000

NORTH



Employment Land Study Review 2012

Site M2M: Oxenholme



Scale: 1: 3,000

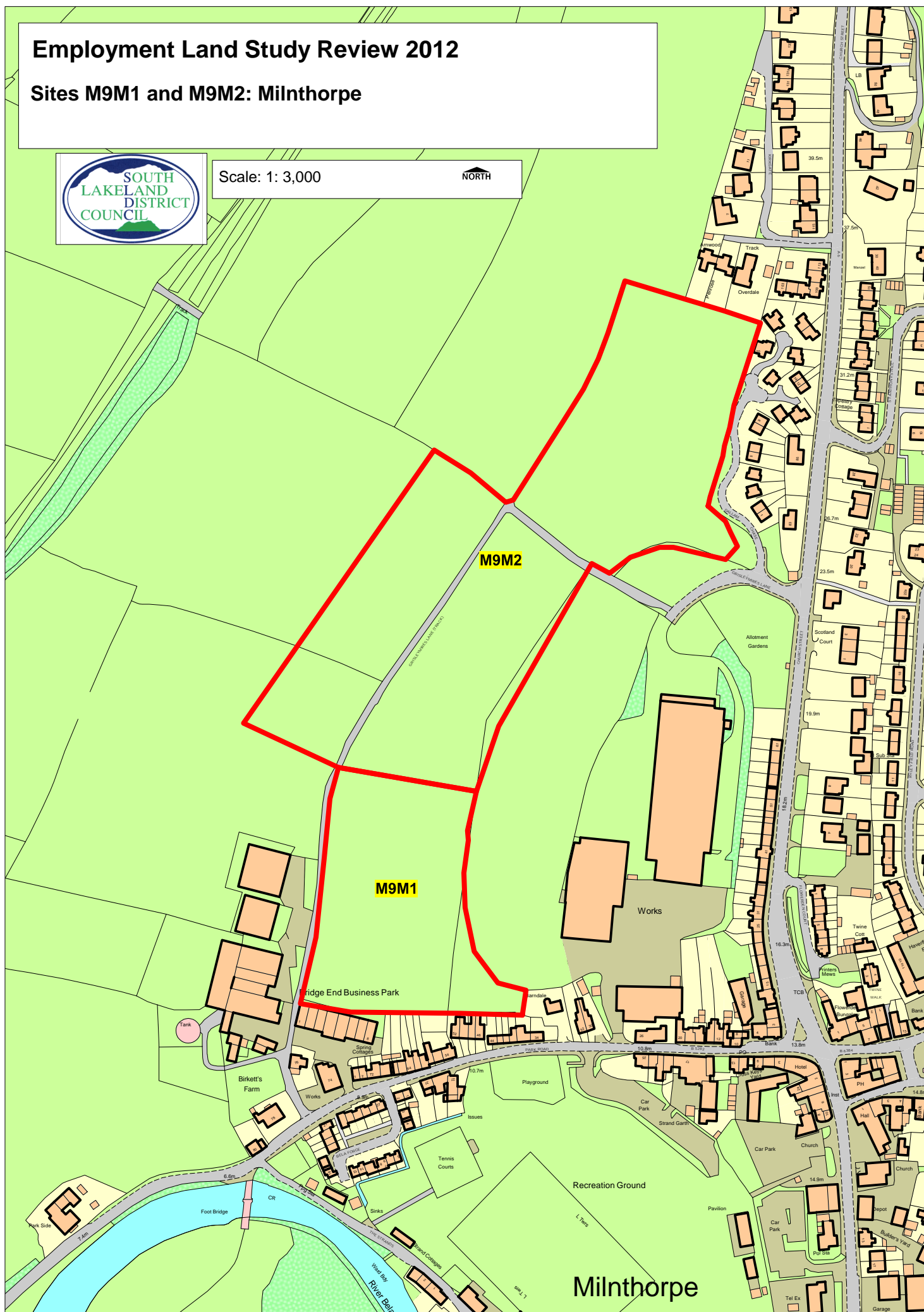


Employment Land Study Review 2012

Sites M9M1 and M9M2: Milnthorpe



Scale: 1: 3,000



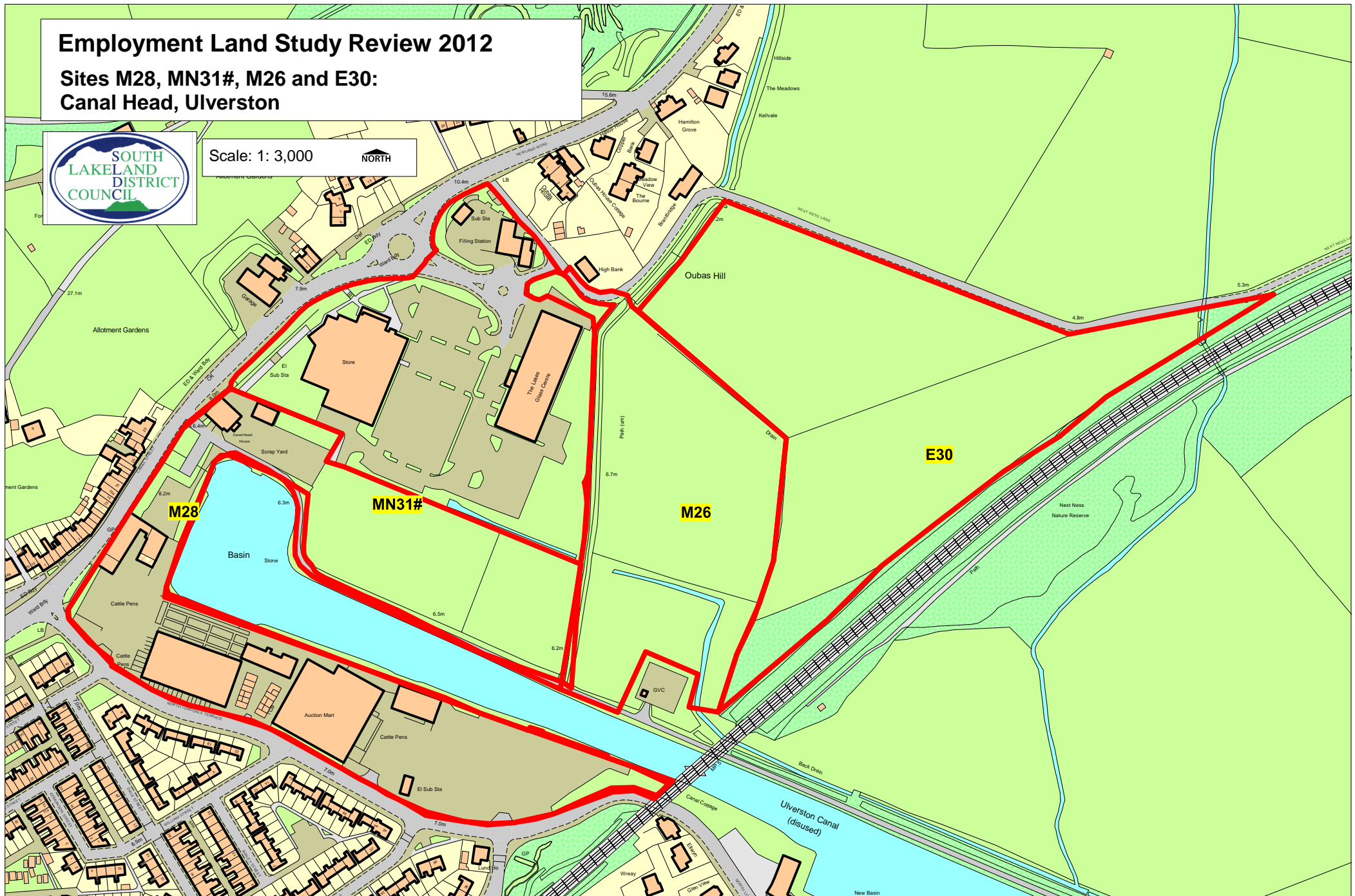
Employment Land Study Review 2012

Sites M28, MN31#, M26 and E30:
Canal Head, Ulverston



Scale: 1: 3,000

NORTH



Employment Land Study Review 2012

Site M35M: Holme



Scale: 1: 3,000

NORTH



Emploment Land Study Review 2012

Sites M378M, R383 & R381: Grange over Sands



Scale: 1: 2,000

NORTH



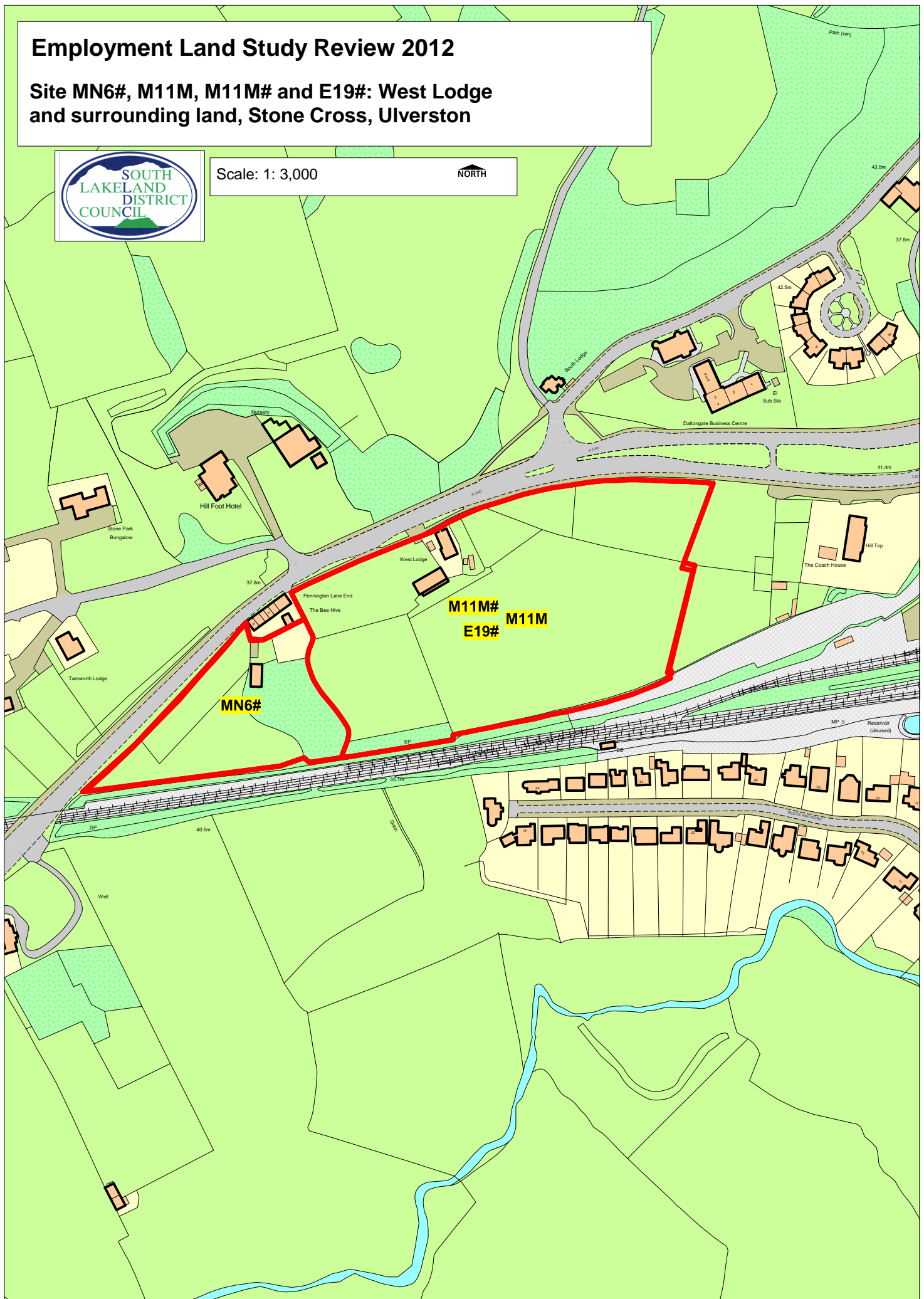
Employment Land Study Review 2012

Site MN6#, M11M, M11M# and E19#: West Lodge and surrounding land, Stone Cross, Ulverston



Scale: 1: 3,000

NORTH



Employment Land Study Review 2012

Site MN19: Old Council Refuse Tip,
Foxfield Road, Broughton in Furness



Scale: 1: 1,100

NORTH



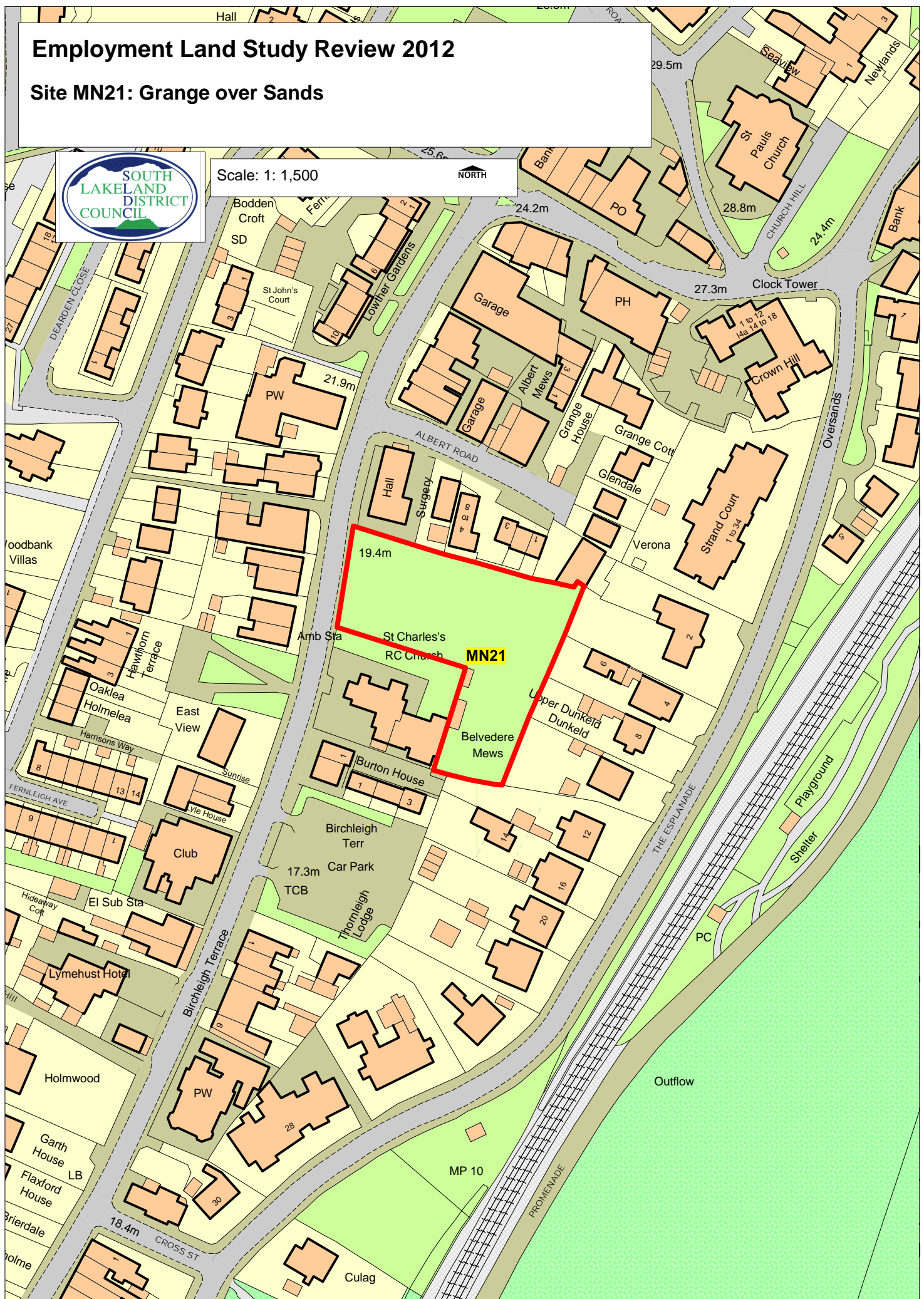
Employment Land Study Review 2012

Site MN21: Grange over Sands



Scale: 1: 1,500

NORTH



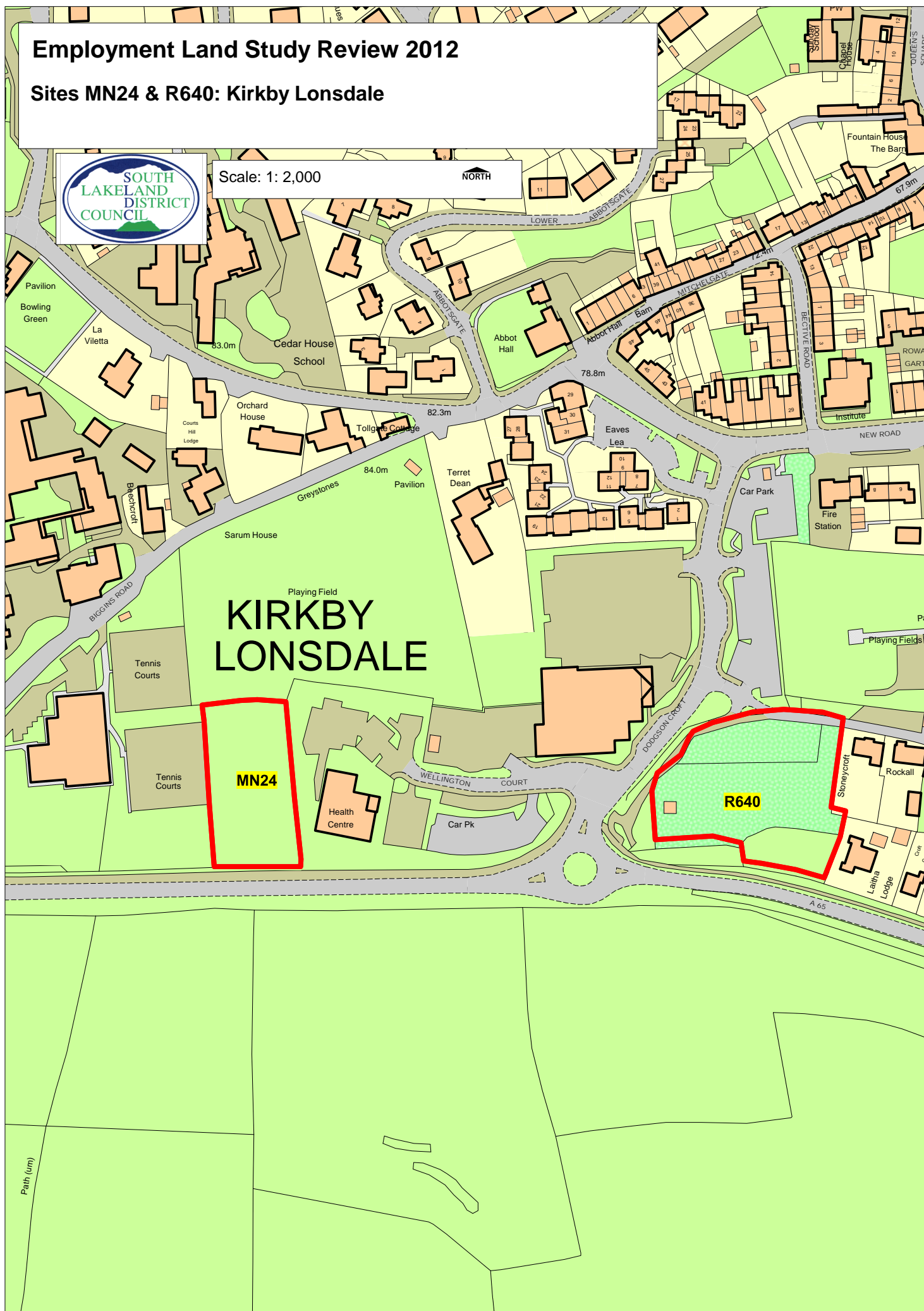
Employment Land Study Review 2012

Sites MN24 & R640: Kirkby Lonsdale



Scale: 1: 2,000

NORTH



Employment Land Study Review 2012

Site MN25M: Kents Bank



Scale: 1: 3,000



Employment Land Study Review 2012

Sites MN30#: East of Fitz Bridge, Ulverston
EN22, 5/106A: Low Tannery, Uverston
and EN23, 5/016B: West End Lane, Ulverston



Scale: 1: 3,000

NORTH



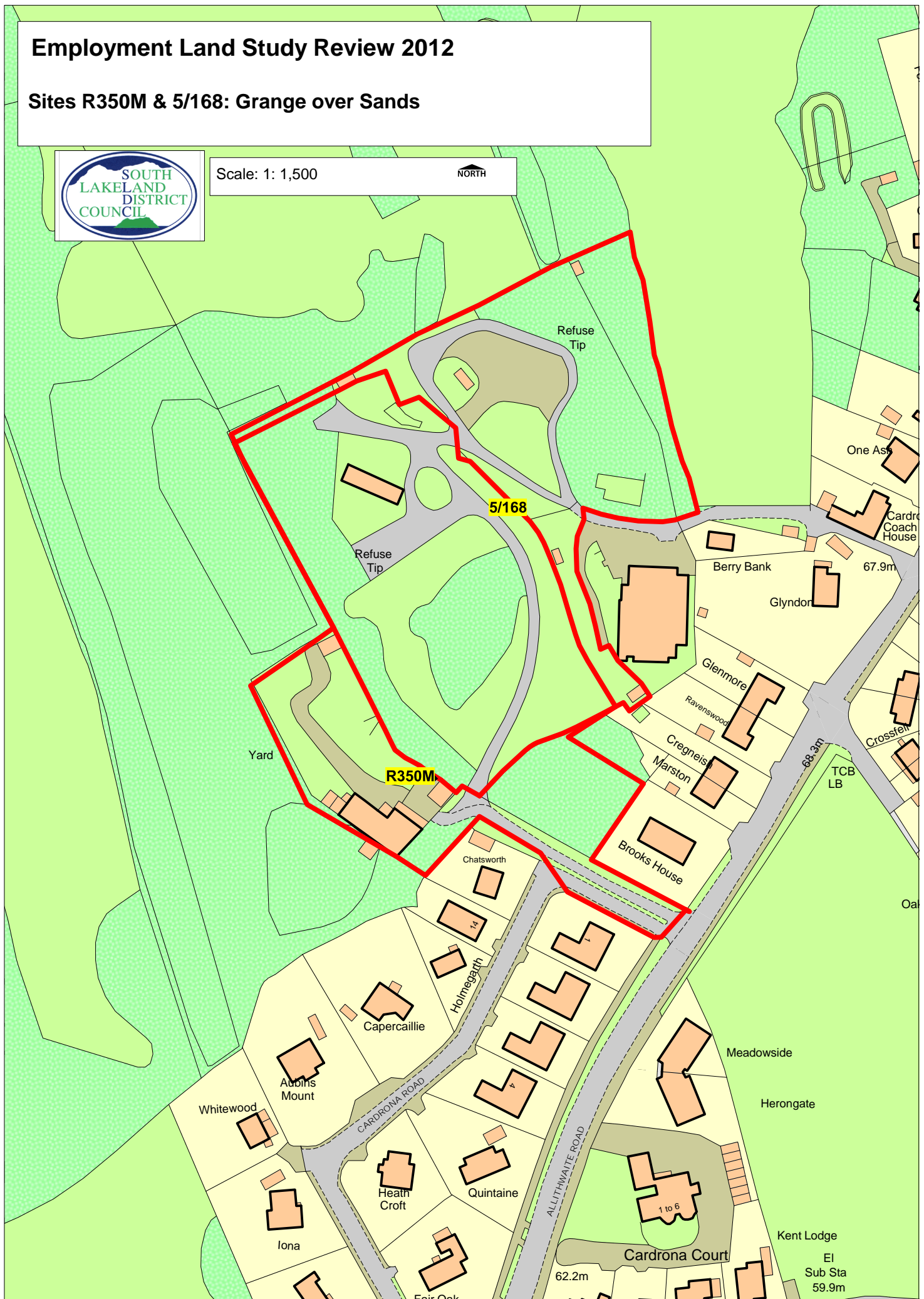
Employment Land Study Review 2012

Sites R350M & 5/168: Grange over Sands



Scale: 1: 1,500

NORTH



Employment Land Study Review 2012

Site RN16M: Crooklands



Scale: 1: 3000

NORTH



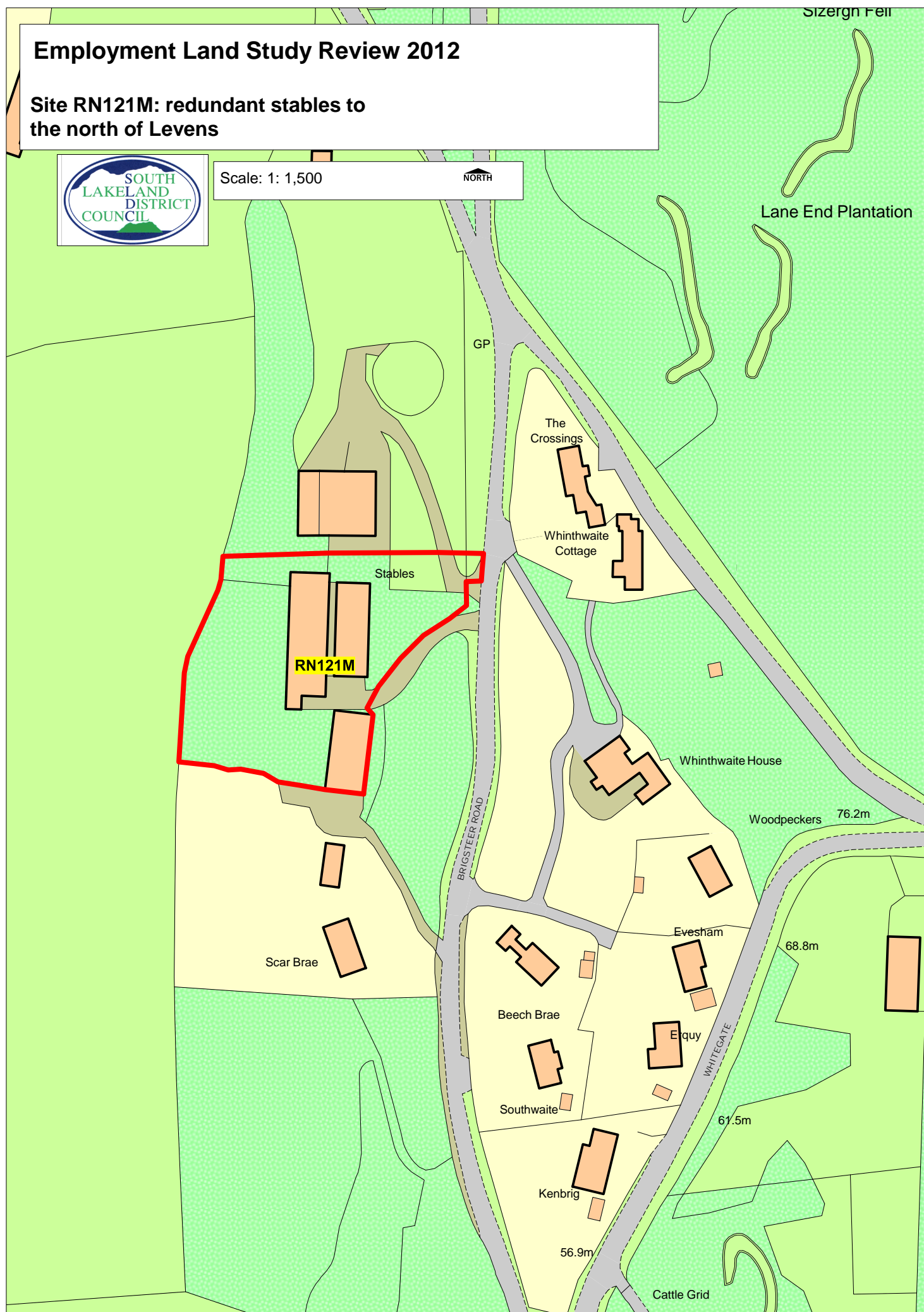
Employment Land Study Review 2012

Site RN121M: redundant stables to the north of Levens



Scale: 1: 1,500

NORTH



Employment Land Study Review 2012

Site RN151M: Holme Mills



Scale: 1:2,000



Spring

Drain

CS

Tunnel

1

SL

Stoneleigh Park

STATION ROAD

MS

RN151M

John's Farm

LB

Holme Mills

TCB

Holme Mills

Mill Pond

Unit

Waterside House

Holme Mill House

Stuice

The Lodge

Briar Bank

Winsten

Holme Mills Industrial Estate

Bank House Farm

Springbank Hillbrow