
Local Development Scheme 2018-21 (October 2018 Update)

For South Lakeland District

outside the Lake District and Yorkshire Dales National
Park

www.southlakeland.gov.uk



Contents

1. Introduction	3
2. What is a Local Plan?	5
3. South Lakeland's Local Plan.....	6
Appendix 1 – Schedule of Existing and proposed Local Plan documents.....	10
Appendix 2 – Schedule of proposed Local Plan documents – Scope and Timetable.....	15
Appendix 3 – Schedule of proposed Supplementary Planning Documents (SPDs) – Scope and Timetable	17
Appendix 4 – Other Planning Documents	18



1. Introduction

- 1.1 SLDC's Council Plan seeks to provide homes to meet needs, create opportunities for economic growth and enhance our environment. The Council's Local Plan is at the forefront of delivering on all three objectives.
- 1.2 The Local Development Scheme sets out the timetable for preparing documents to be included in the Local Plan. This includes completing documents which comprise the current Local Plan (2003-25) but importantly also work to prepare a replacement single Local Plan by 2021 for the period 2016-36.
- 1.3 South Lakeland's current Local Plan covers the period from 2003 to 2025 and contains four main elements called Development Plan Documents (DPDs):
 - **Local Plan Part 1 – South Lakeland Core Strategy** (adopted in 2010) which sets out the quantity, distribution and general principles underlying development;
 - **Local Plan Part 2 – Land Allocations** (adopted in 2013) which allocates sites to meet development needs;
 - **Local Plan Part 3 – Development Management Development Plan Document (DPD)** (currently in preparation) which sets out the criteria that new development has to meet and
 - **Local Plan Part 4 – Arnside & Silverdale Area of Outstanding Natural Beauty (AONB) DPD** (currently in preparation) is being prepared jointly with Lancaster City Council dealing with the special issues associated with the Arnside Silverdale Area of Outstanding Natural Beauty.
- 1.4 Other elements of the Local Plan are some saved policies from the old South Lakeland Local Plan (adopted in 1997 and amended in 2006) which will be replaced by Local Plan Parts 3 and 4 when these are adopted, Neighbourhood Plans produced by local communities and plans relating to Minerals and Waste which are produced by Cumbria County Council. The Lake District and Yorkshire Dales National Park authorities have their own Local Plans.
- 1.5 The Local Plan also includes supplementary planning documents such as Development Briefs. These provide detailed guidance on the interpretation of local plan policies.
- 1.6 This Local Development Scheme covers the period 2018-2021 and sets out the programme not only for the completion of the current Local Plan but also the preparation of its replacement, a single Local Plan which will cover the period 2016-2036.
- 1.7 This document contains;

- An introduction setting out the context for the Local Plan,
 - A description of which local and related documents the Council will produce and or review,
 - A timetable for the production or review for each Development Plan Document (DPDs) and each Supplementary Planning Document (SPDs).
- 1.8 South Lakeland District Council is responsible for local planning for parts of the District outside the Lake District and Yorkshire Dales National Parks, as extended in August 2016 – see map below.
- 1.9 This Local Development Scheme will be published and kept up to date on the Council's website: www.southlakeland.gov.uk.

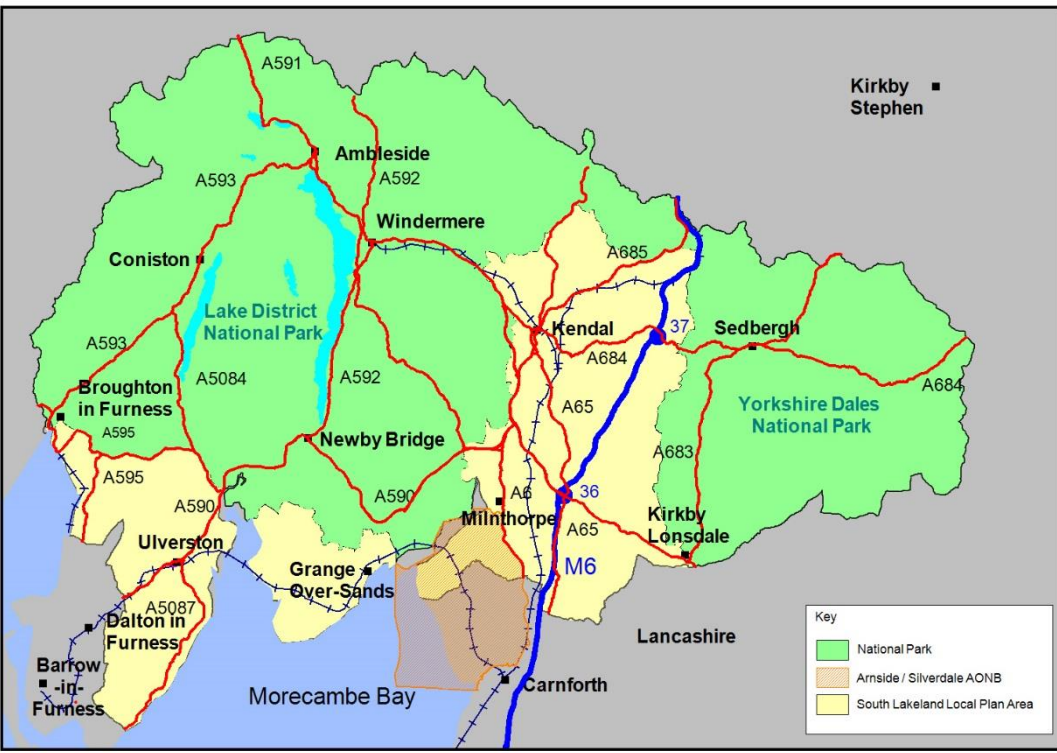


Figure 1: Map of South Lakeland District

2. What is a Local Plan?

- 2.1 **The Local Plan is the collection of documents that make up the statutory development plan for a Local Planning Authority (LPA).** The plan sets out development and infrastructure needs and the Council's proposals for meeting these and guides the Council's decisions when it determines planning applications.
- 2.2 The Local Plan is made up of a number of individual local plan documents called **Development Plan Documents (DPDs)** and **Supplementary Planning Documents (SPDs)**. Development Plan documents go through public consultation and independent examination before they can be adopted. Supplementary Planning Documents add detail and guidance on how local plan policies are to be applied. They go through consultation but can be adopted without going through independent examination.
- 2.3 Local Plans must be in general conformity with the Government's **National Planning Policy Framework** which contains a Presumption in Favour of Sustainable Development.
- 2.4 Local Plan documents are subject to **Sustainability Appraisal (SA)** to consider their economic, social and environment effects. They go through public consultation and independent examination before they can be adopted.
- 2.5 Local Planning authorities are under a **Duty to Co-operate** which requires them to actively engage and work jointly on strategic matters. The Council co-operates actively and on an ongoing basis with the National Park authorities, with the neighbouring districts of Lancaster, Barrow, Copeland and Eden as well as with Cumbria County Council, government agencies and infrastructure providers to ensure that strategic priorities are reflected in the Local Plan.
- 2.6 Under the Localism Act, local communities can prepare their own **neighbourhood plans**. Where these conform to the Council's local plan, have gone through independent examination and are supported by a referendum, they must be included within the Council's development plan. In South Lakeland, Neighbourhood Plans have been adopted for Heversham and Hincaster and Grange-over-Sands, and are in preparation in Lower Allithwaite and Burneside (currently on hold).
- 2.7 The procedure for the preparation and review of Local Plans has been revised and is set out in [The Town and Country Planning \(Local Planning\) \(England\) 2012 Regulations](#).

3. South Lakeland's Local Plan

- 3.1 This Local Development Scheme (LDS) sets out the timetable for the production of Local Plan documents, neighbourhood plans and SPDs between 2018 and 2021. It can be viewed on the Council's website.

Development Plan Documents (DPDs)

- 3.2 South Lakeland's Local Plan covers the period from 2003 to 2025 and contains four main elements called Development Plan Documents (DPDs). The following have already been prepared and adopted;
- **Local Plan Part 1 – South Lakeland Core Strategy** (adopted in 2010) which sets out how much development is proposed, broadly where it will be built and measures to manage its impact.
 - **Local Plan Part 2 – Land Allocations** (adopted in 2013) which identifies or 'allocates' land to meet needs for specific types of development such as housing and employment;
- 3.3 The next phase of plan making is the completion of the remaining Development Plan documents by February 2019. These are;
- **Local Plan Part 3 – Development Management Policies DPD and other matters** (currently in preparation) which sets out the criteria that new development has to meet and sets out the principles for the regeneration of Kendal Town Centre and Canal Head as well as addressing updated gypsy and traveller needs;
 - **Local Plan Part 4 – Arnside & Silverdale AONB DPD** (currently in preparation) is being prepared jointly with Lancaster City Council dealing with the special issues associated with the Arnside Silverdale Area of Outstanding Natural Beauty.
- 3.4 The Policies Map that accompanies the Local Plan shows designations and allocations policies from the Land Allocations and Core Strategy as well as saved policies from the existing 1997/2006 Local Plan. As new plans are adopted, new designations are added and superseded ones deleted.

Single Local Plan

- 3.5 The current suite of Local Plan documents will be combined into a single local plan covering the period 2016 to 2036 and containing site allocations, development management policies and area specific policies for the whole District (outside national parks). This plan is due to be adopted by December 2021.

Supplementary Planning Documents

- 3.6 Supplementary Planning Documents (SPDs) provide further guidance on specific sites or complex issues and are linked to specific local plan policies. SPDs are a material consideration in planning decisions but have less weight than Local Plan policies.
- 3.7 A series of Development Brief SPDs have been prepared in three phases and this programme has now been completed:

Phase 1

- **Kendal Parks**, Kendal (adopted April 2015)
- **Stainbank Green**, Kendal (adopted April 2015)
- **Underbarrow Road**, Kendal (adopted April 2015)
- **Scroggs Wood**, Kendal (adopted February 2015)
- **Kendal Road, Kirkby Lonsdale** (adopted April 2015)
- **South and east of Milnthorpe** (adopted April 2015)
- **Croftlands**, Ulverston (adopted April 2015)
- **Cross-a-Moor, Swarthmoor** (adopted November 2014)

Phase 2

- **South of Allithwaite Road, Kents Bank**, Grange-over-Sands (adopted November 2016)
- Land north of **Laurel Gardens**, Kendal (adopted November 2016)
- Land at **West of High Sparrowmire**, Kendal (adopted November 2016)

Phase 3

- **Green Dragon Farm**, Burton in Kendal (adopted August 2017)
 - North of **Sycamore Close, Endmoor** (adopted August 2017)
 - Land east of **Milnthorpe Road, Holme** (adopted April 2018 2018)
 - Land East of **Burton Road, Kendal** (the need for a Brief for this site will be reviewed as part of the single Local Plan)
- 3.8 The Council has also adopted the Cumbria Wind Energy SPD.

- 3.9 It is intended to prepare three Supplementary Planning Documents (SPDs) by 2021. A Housing SPD will set out planning guidance on housing policies in the Core Strategy and other adopted Local Plan documents – for example on matters relating to affordable and self-build housing. A Design SPD will set out detailed guidance on design matters relating to policies in adopted Local Plan documents, including Core Strategy CS8.10 and forthcoming policies in the DM DPD, on adoption. Thirdly, it is proposed that a Village Design Statement is prepared for Burton-in-Kendal, as part of the Burton-in-Kendal Partnership Scheme in Conservation Areas, (PSiCA). The scheme is a proposed partnership scheme between Historic England, the District Council and Burton-in-Kendal Parish Council to support the repair of key buildings and public realm improvements.

Other Local Plan documents

- 3.10 The Council adopted a Community Infrastructure Levy Charging Schedule which came into effect on 1 June 2015. This is a levy on new built development to fund critical infrastructure to implement the Local Plan. The charging schedule will be reviewed in the light of updated viability evidence. Other key local plan documents include the Infrastructure Delivery Plan which is updated annually, an Annual Monitoring Report and the Statement of Community Involvement (SCI) which sets out how the Council will engage with communities and stakeholders in plan preparation. A revised SCI was adopted in March 2016 and includes guidance on how the Council will assist Parish and Town Councils in preparing Neighbourhood Plan. The Council consulted on a draft revised SCI in July 2018 and adopted it in October 2018.

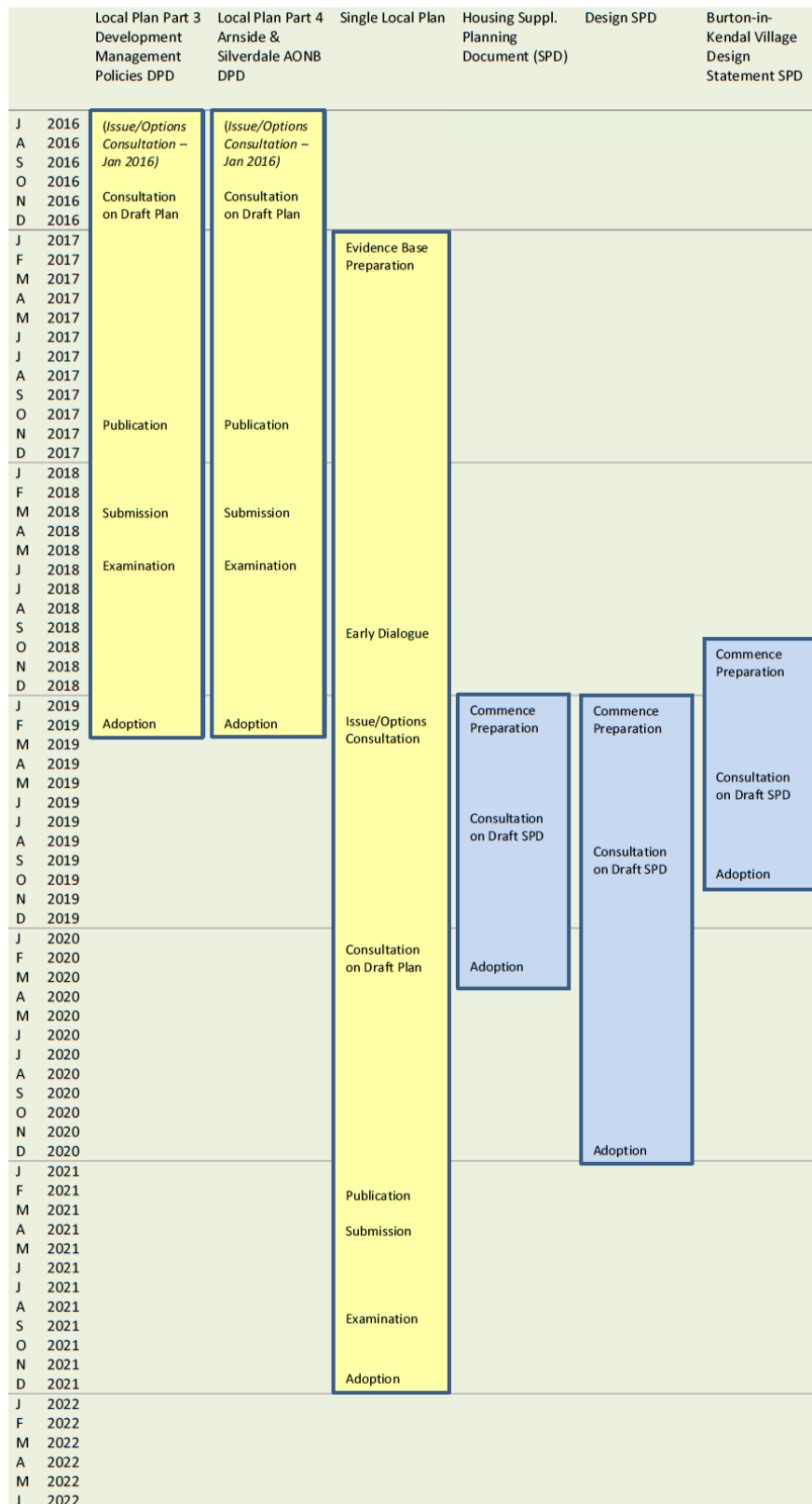


Figure 2: Chart illustrating timetable for preparation of Local Plan documents

Appendix 1 – Schedule of Existing and proposed Local Plan documents

Local Plan Documents

Existing Development Plan Documents

Document Title	Document Description
South Lakeland Local Plan Part 1 - Core Strategy	The Core Strategy provides the strategic planning framework for the District, outside the National Parks. It sets out the long-term spatial vision and the strategic objectives quantity and distribution of development and policies to deliver the vision. Adopted October 2010.
South Lakeland Local Plan Part 2 – Land Allocations	Identifies or ‘allocates’ land within the District, outside the National Parks, for specific types of development such as housing and employment. Adopted December 2013.
‘saved’ South Lakeland Local Plan Policies	Although many policies from the old 1997/2006 South Lakeland Local Plan are superseded by the Core Strategy and Land Allocations, some will remain part of the Local Plan until superseded when the Development Management Policies and AONB DPDs are adopted (expected February 2019).
Cumbria Mineral & Waste Local Plan	The Cumbria Minerals and Waste Local Plan 2015-30 was adopted by Cumbria County Council in September 2017.

Emerging Development Plan Documents

Document Title	Document Description
South Lakeland Local Plan Part 3 – Development Management Policies DPD	<p>This document will contain:</p> <p>Development Management Policies setting out the criteria against which planning applications will be considered including design and environmental standards.</p> <p>Kendal Town Centre and Canal Head providing a land-use and policy framework to guide and integrate Kendal's town centre and Canal Head</p> <p>Gypsy and Traveller issues setting out updated policy for considering gypsy and traveller sites and the Council's strategy for meeting these needs.</p>
South Lakeland Local Plan Part 4 - Arnsdale & Silverdale Area of Outstanding Natural Beauty (AONB) DPD	<p>The Arnsdale and Silverdale Area of Outstanding Natural Beauty is an area of national landscape importance. It covers part of South Lakeland District and part of Lancaster District. The national importance of this area means that development needs have to be met in a way which reflects the special character of the area. In order to plan in a consistent way across the AONB both in terms of the identification of sites and development management policies, SLDC and Lancaster City Council are working on a joint Local Plan for the AONB in close consultation with local communities.</p>
Neighbourhood Plans	<p>A Neighbourhood Plan for Heversham and Hincaster parish councils was adopted in March 2017, and a Neighbourhood Plan for Grange-over-Sands parish was adopted in July 2018. Neighbourhood Plans are being prepared by Parish Councils for Lower Allithwaite and Burneside (currently on hold).</p>

Local Plan Supplementary Planning Documents

Document Title	Document Description
Wind Energy	<p>Originally Supplementary Planning Guidance to the Cumbria Structure Plan, this was adopted by SLDC as a Supplementary Planning Document to South Lakeland's Core Strategy in Jan 2012.</p>

Document Title	Document Description
Development Brief(s)	<p>Development Briefs give guidance on development on specific sites, setting out details on siting, access, design and landscaping. They are subject to consultation with the public, developers and delivery partners.</p> <p>There are adopted briefs covering sites at:</p> <p>Kendal – (6) Stainbank Green, Underbarrow Road, Scrogg’s Wood, Kendal Parks, Laurel Gardens and Windermere Road</p> <p>Ulverston – (2) Croftlands, Ulverston and Cross-a-Moor, Swarthmoor</p> <p>Grange over Sands – (1) Allithwaite Road, Kents Bank</p> <p>Milnthorpe – (1) Land south and east of Milnthorpe,</p> <p>Kirkby Lonsdale – (1) Kendal Road</p> <p>Burton in Kendal – (1) Green Dragon Farm</p> <p>Endmoor – (1) Sycamore Close.</p> <p>Holme - (1) East of Milnthorpe Road</p> <p>The need for a brief for the Land East of Burton Road, Kendal will be reviewed as part of the single Local Plan.</p>

Local Plan: Other Documents and Processes

Document Title	Document Description
Community Infrastructure Levy (CIL) charging schedule	<p>The Community Infrastructure Levy (CIL) is a charge on development which will be used to support critical infrastructure to deliver the Core Strategy and Land Allocations. A proportion of CIL receipts goes directly to Parish and Town Councils to fund local community infrastructure projects. <i>Came into effect on 1 June 2015</i></p>
Infrastructure Delivery Plan	<p>This document sets out the infrastructure required to deliver the Local Plan. It also sets out community aspirations for additional infrastructure. It identifies those items to which the Community Infrastructure Levy is intended to contribute. The Infrastructure Delivery Plan is reviewed and updated annually. <i>Latest edition, August 2017</i></p>

Document Title	Document Description
Local Development Scheme	This document sets out the timetable for preparing documents to be included in the Local Plan.
Policies Map	The Policies Map comprises all of the site allocations and designations set out in adopted development plan documents. <i>Last modified in December 2013 and will be modified further in the Kendal Canal Head area upon adoption of the Development Management Policies DPD, and in the AONB area by the AONB DPD.</i>
Statement of Community Involvement	This document sets out the Council's approach to engaging the community in planning decisions. <i>Latest document adopted October 2018.</i>
Sustainability Appraisal	Undertaken for all Development Plan Documents, and where required for Supplementary Planning Documents. This will ensure that the social, economic and environmental effects of policies are understood and fully taken into consideration. A Sustainability Appraisal report will accompany each published stage of a Development Plan Document, including the final Submission version.
Habitats Regulations Assessment and Appropriate Assessment	A Habitats Regulations Assessment of plans must be undertaken to establish whether or not the proposals within a plan are likely to have significant effects on any areas of international biodiversity importance. Where the Habitats Regulations Assessment cannot state with certainty that there will be no significant effects, an Appropriate Assessment is also required to determine the likelihood of such effects, what these effects will be and whether and how these might be mitigated. The Habitats Regulations Assessment and, where relevant, the Appropriate Assessment reports accompany the relevant plan at consultation and publication stages.
Monitoring Report	Reviews progress made on preparing Local Plan documents and assesses the effectiveness of policies. We plan to prepare a monitoring report annually. <i>Latest edition 2017 Annual Monitoring Report (December 2017)</i>

Document Title	Document Description
Evidence Base	The evidence base includes data collected and analysed by South Lakeland District Council and studies carried out by consultants on behalf of the Council. The Local Plan will also have regard to a number of strategies and other policy documents prepared by South Lakeland District Council and other organisations. Additional studies or reviews of existing studies will be undertaken as work progresses on the Local Plan.



Appendix 2 – Schedule of proposed Local Plan documents – Scope and Timetable

Document	Progress	Role and Content	Geographical Area	Early preparation and consultation	Formal Publication	Submission to Secretary of State	Adoption by Full Council	Build into Single Local Plan in 2021?
Local Plan Pt 4 Arnside & Silverdale AONB Development Plan Document	Submitted February 2018 Examination in Public June 2018	Aims to identify the sites which will deliver new housing and employment development in the AONB area as well as setting out policies to guide the approach to and design of development in the AONB.	AONB Area including parts of within Lancaster District	Started July 2013	November 2017	February 2018	February 2019	Separate DPD
Local Plan Pt 3 Development Management Policies Development Plan Document	Submitted February 2018 Examination in Public June 2018	Sets out the criteria against which planning applications will be considered including design and energy efficiency considerations. Sets out policy for gypsy and traveller accommodation and the approach to meeting these needs. Setting out a regeneration framework for Kendal Town Centre and Canal Head.	*District wide (except National Park Areas)	Started July 2015	November 2017	February 2018	February 2019	Yes
Grange over Sands Neighbourhood Plan	Passed referendum in July 2018. Made in August 2018.	Identifies or 'allocates' land within the parish(es) and/or sets out planning policies relating to community priorities.	Grange over Sands Parish	2016/17	May 2017 - pre-submission consultation	November 2017 (submitted to SLDC)	August 2018	N/A
Lower Allithwaite Neighbourhood Plan	Early preparation and consultation 2015/17	Identifies or 'allocates' land within the parish(es) and/or sets out planning policies relating to community priorities.	Lower Allithwaite Parish	2015/17	TBC	TBC	TBC	N/A

Document	Progress	Role and Content	Geographical Area	Early preparation and consultation	Formal Publication	Submission to Secretary of State	Adoption by Full Council	Build into Single Local Plan in 2021?
Single Local Plan (Replacement Local Plan)	Evidence base commenced 2017	Setting out the long-term spatial vision and strategic objectives and policies. Also to include Land Allocations, Development Management Policies, Gypsies & Travellers, Kendal Canal Head.	District wide * (except National Park Areas)	Evidence base from 2017	January 2021	May 2021	December 2021	N/A

*Note - SLDC's adopted Core Strategy and Land Allocations DPDs will remain the development plan in the extended areas of the National Parks (as confirmed August 2016) until such time as the relevant National Park authority adopts a replacement plan. However the forthcoming Development Management Policies DPD, single Local Plan and related Supplementary Planning Documents will cover the whole of the district *outside* the extended National Parks boundaries.

Appendix 3 – Schedule of proposed Supplementary Planning Documents (SPDs) – Scope and Timetable

Document	Role and Content	Policies	Geographical Area	Preparation & Issues Consultation	Consult on Draft Brief and SPDs	Adoption by Cabinet
Housing Supplementary Planning Document (SPD)	Setting out planning guidance on housing policies in adopted Local Plan documents – for example on affordable and self-build housing.	Core Strategy CS6.3 and housing policies in the DM DPD, on adoption	District wide * (except National Park Areas)	Commence Early 2019	2019	Early 2020 (March)
Design Supplementary Planning Document (SPD)	Setting out detailed guidance on design matters related to policies in adopted Local Plan documents.	Core Strategy CS8.10 & housing policies in the DM DPD (Policy DM2), on adoption	District wide * (except National Park Areas)	Commence Early 2019	2019	End 2020 (December)
Burton-in-Kendal Village Design Statement (SPD)	Setting out detailed on the design of new development in Burton village and Conservation Area	DM DPD policy DM2 on adoption	Burton in Kendal village.	Commence October 2018	March 2019	October 2019

Appendix 4 – Other Planning Documents

Document	Progress	Role and Content	Geographical Area	Preparation	Consultation	Adoption
Proposals Map	Last modified October 2010.	Showing locations where specific policies and proposals will apply	District wide (except National Park Areas)	As and when a DPD or SPD is prepared	As and when a DPD or SPD is prepared	As and when a DPD or SPD is prepared