

**SOUTH LAKELAND DISTRICT COUNCIL AND THE LAKE DISTRICT NATIONAL  
PARK AUTHORITY  
Town and Country Planning, England  
The Neighbourhood Planning (General) Regulations 2012**

In accordance with Part 2 of the Neighbourhood Planning (General) Regulations 2012, South Lakeland District Council and the Lake District National Park Authority recently consulted on an application made by Burneside Parish Council for the designation of the parishes of Strickland Roger and Strickland Ketel (excluding land known as the West of High Sparrowmire site and part of the North of Laurel Gardens site) as a Neighbourhood Area for the purposes of Neighbourhood Planning. Following the consultation, South Lakeland District Council's Cabinet approved the application on 29 June 2016 and designated the Neighbourhood Area. The [Lake District National Park Authority](#) has also approved the application.

In accordance with the above regulations, both authorities must publicise the following information about the designation to bring it to the attention of people who live, work or carry on business in the area to which the designation relates.

**The name of the Neighbourhood Area**

The name of the Neighbourhood Area is Burneside Neighbourhood Area

**A map identifying the area designated**

Please see accompanying map.

**The name of the relevant body who applied for the designation**

Burneside Parish Council is the relevant body that applied for the designation.

These details are published on both authorities' websites at [www.southlakeland.gov.uk](http://www.southlakeland.gov.uk) and [www.lakedistrict.gov.uk](http://www.lakedistrict.gov.uk), and can be inspected during normal opening hours at South Lakeland House, Kendal, LA9 4DL, at the National Park Offices, Murley Moss, Oxenholme Road, Kendal, LA9 7RL and at Kendal library.

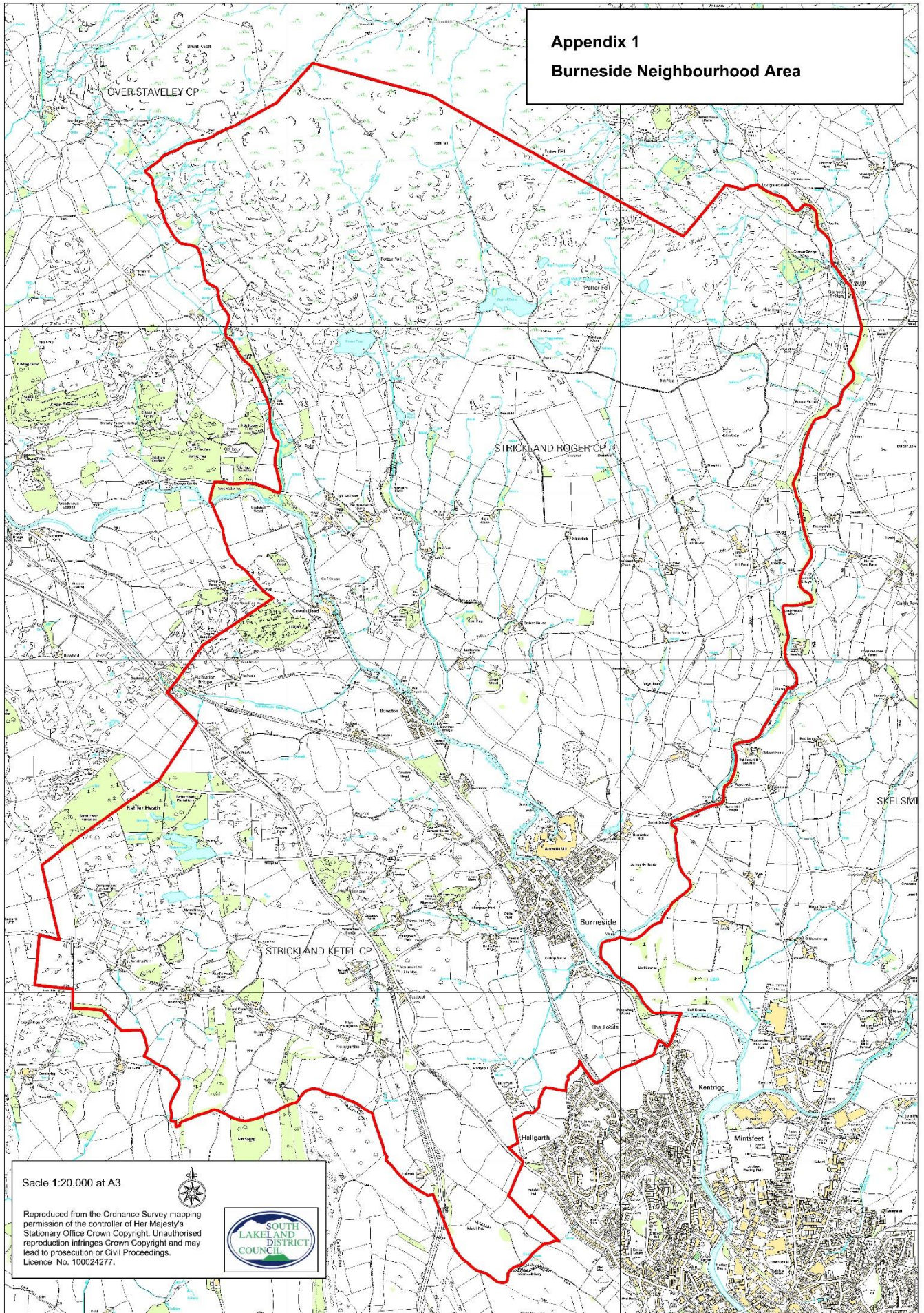
If you have any queries about the designation or Neighbourhood Planning in South Lakeland more generally, please email [developmentplans@southlakeland.gov.uk](mailto:developmentplans@southlakeland.gov.uk), write to the Development Plans Manager, South Lakeland District Council, South Lakeland House, Lowther Street, Kendal, LA9 4DL or call 01539 793388.

Lawrence Conway, Chief Executive, 6 July 2016.



## Appendix 1

### Burnside Neighbourhood Area



Scale 1:20,000 at A3



Reproduced from the Ordnance Survey mapping permission of the controller of Her Majesty's Stationary Office Crown Copyright. Unauthorised reproduction infringes Crown Copyright and may lead to prosecution or Civil Proceedings. Licence No. 100024277.

