

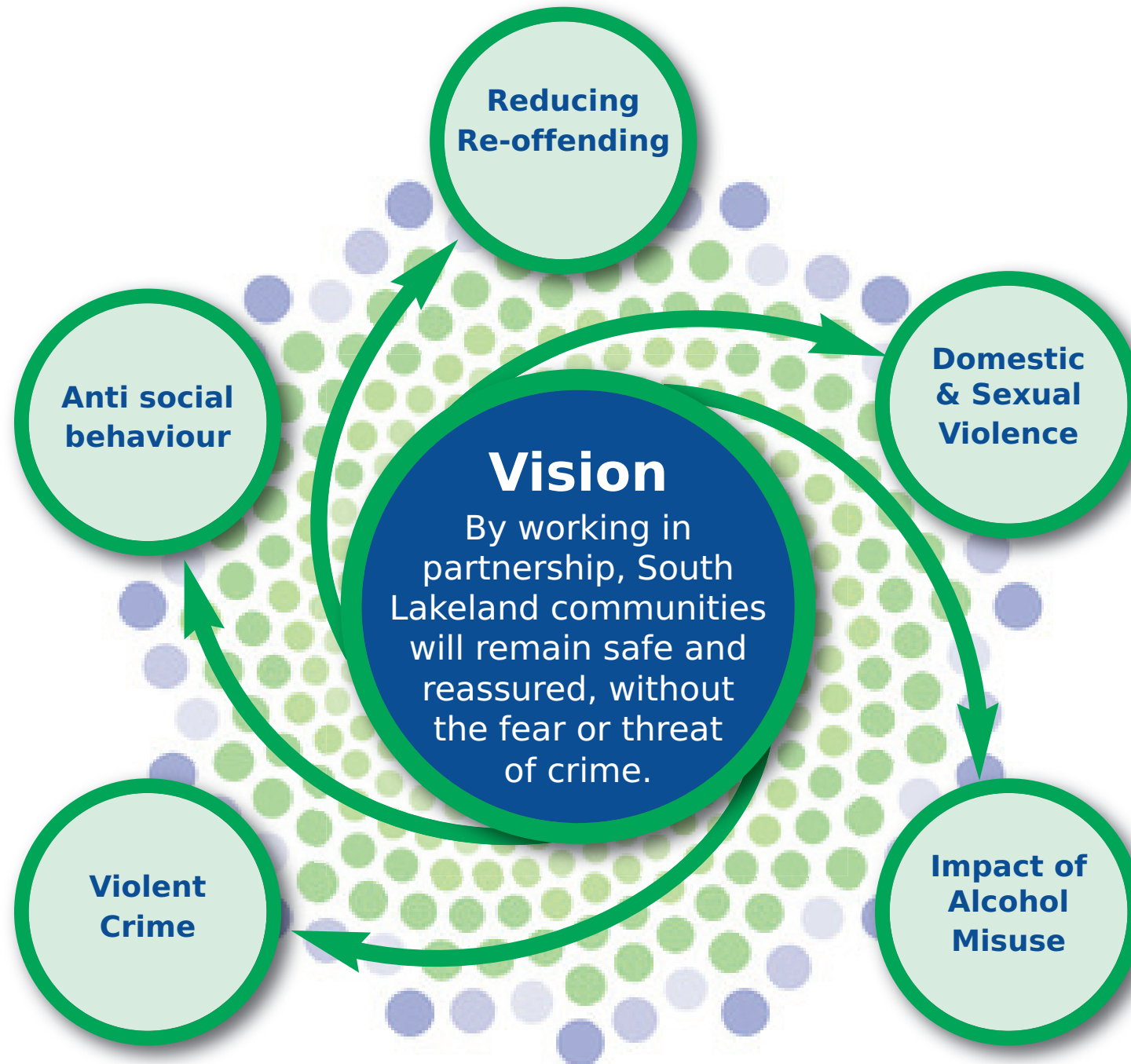
# South Lakeland CSP Partnership Plan Refresh 2012-2013

## Successes in 2011/12

- Established the joint South Cumbria Leadership Group with Barrow Community Safety Partnership
- Developed and delivered the South Cumbria Alcohol Strategy — with a focus on pre loading (where a large amount of alcohol is consumed before a night out) and proxy sales (where an adult purchases alcohol for a person under 18)
- Initiated the development of the South Cumbria Domestic Champion's Network to improve community and organisational responses to domestic violence
- Established a multi agency group dealing with repeat and vulnerable victims of anti-social behaviour
- Worked with repeat offenders through multi agency Integrated Offender Management
- Supported the development of the Independent Sexual Violence Advisors (ISVA) in South Lakeland

## Key Priorities 2012/13

A strategic assessment has been completed and highlighted the following priorities



## Tackling the Priorities 2012/13

<b>Impact of Alcohol Misuse</b>	<ul style="list-style-type: none"> <li>• Continue to deliver the South Cumbria Alcohol Strategy 2012 – 2015 through dedicated task and finish groups</li> </ul>
<b>Anti Social Behaviour</b>	<ul style="list-style-type: none"> <li>• Maintain reduction in anti-social behaviour across South Lakeland</li> <li>• Continue to support the Multi Agency Anti-Social Behaviour Risk Assessment Meeting (MAASBRAM) and problem solving approach</li> <li>• Deliver diversionary projects in identified ASB hot spots</li> </ul>
<b>Domestic &amp; Sexual Violence</b>	<ul style="list-style-type: none"> <li>• Further develop and expand the Domestic Violence champions network and deliver 3 training sessions during 12/13 for dedicated champions</li> <li>• Maintain monthly Multi Agency Risk Assessment Conferences (MARAC), Independent Domestic Violence Advisor (IDVA) and ISVA services and specialist Domestic Violence courts</li> <li>• Support the development of the Community Group programme for children affected by DV</li> <li>• Development of preventative work with young people, targeting potential perpetrators and victims</li> </ul>
<b>Reducing Re-offending</b>	<ul style="list-style-type: none"> <li>• Continue the Integrated Offender Management programme using a range of partners to manage problem individuals effectively in communities</li> <li>• Monitor effectiveness of South Cumbria IOM scheme using revised performance indicators</li> <li>• Encourage the use of restorative justice through provision of training to a range of public, private and voluntary sector agencies</li> </ul>
<b>Violent Crime</b>	<ul style="list-style-type: none"> <li>• Work with partners to reduce violent crime and assaults</li> </ul>

## Statistics 2011/12

- 509** fewer victims of Anti Social Behaviour
- 37** fewer victims of domestic violence
- 104** less drug offences
- 51** more violent crimes

## Targets 2012/13

- Increase the reporting of domestic violence incidents
- Reduce the number of repeat victims of domestic violence
- Through the champions network, raise awareness of domestic violence and abuse in our communities and organisational responses
- Reduce the number of recorded crimes linked to alcohol

# South Lakeland CSP Partnership Plan Refresh 2012-2013

## Where We Are

South Lakeland Community Safety Partnership agreed key areas of work for 2012/13 using information from the Cumbria Community Safety Strategic Assessment, completed in 2011.

We will continue to focus efforts on those crimes that have the greatest impact in our communities and acknowledge that one of the significant contributing factors in all these crime types is alcohol misuse.

Based on this, the priorities are:

- Impact of Alcohol Misuse
- Anti Social Behaviour
- Domestic and Sexual Violence
- Reducing Re-offending
- Violent Crime

During 2011/12, we worked closely with Barrow Community Safety Partnership across 3 joint groups and this will continue in 2012/13.

- the South Cumbria Alcohol Strategy Steering Group have refreshed the Alcohol Strategy which will last until 2015, linking to the newly published national Alcohol Strategy and have agreed to deliver local actions through 3 task and finish groups.
- the South Cumbria Domestic Violence Champions Network will continue to raise awareness of domestic violence within organisations and through training, provide up to date accessible information for victims.

- offending behaviour will continue to be managed through the Integrated offender Management (IOM) model across South Lakeland and Barrow districts.

Partners have agreed these joint priorities where we will work together, but this does not mean that other crime types are not considered important, nor will it affect the way victims of crime are dealt with by any partner agency.

## Our Partnership Approach

