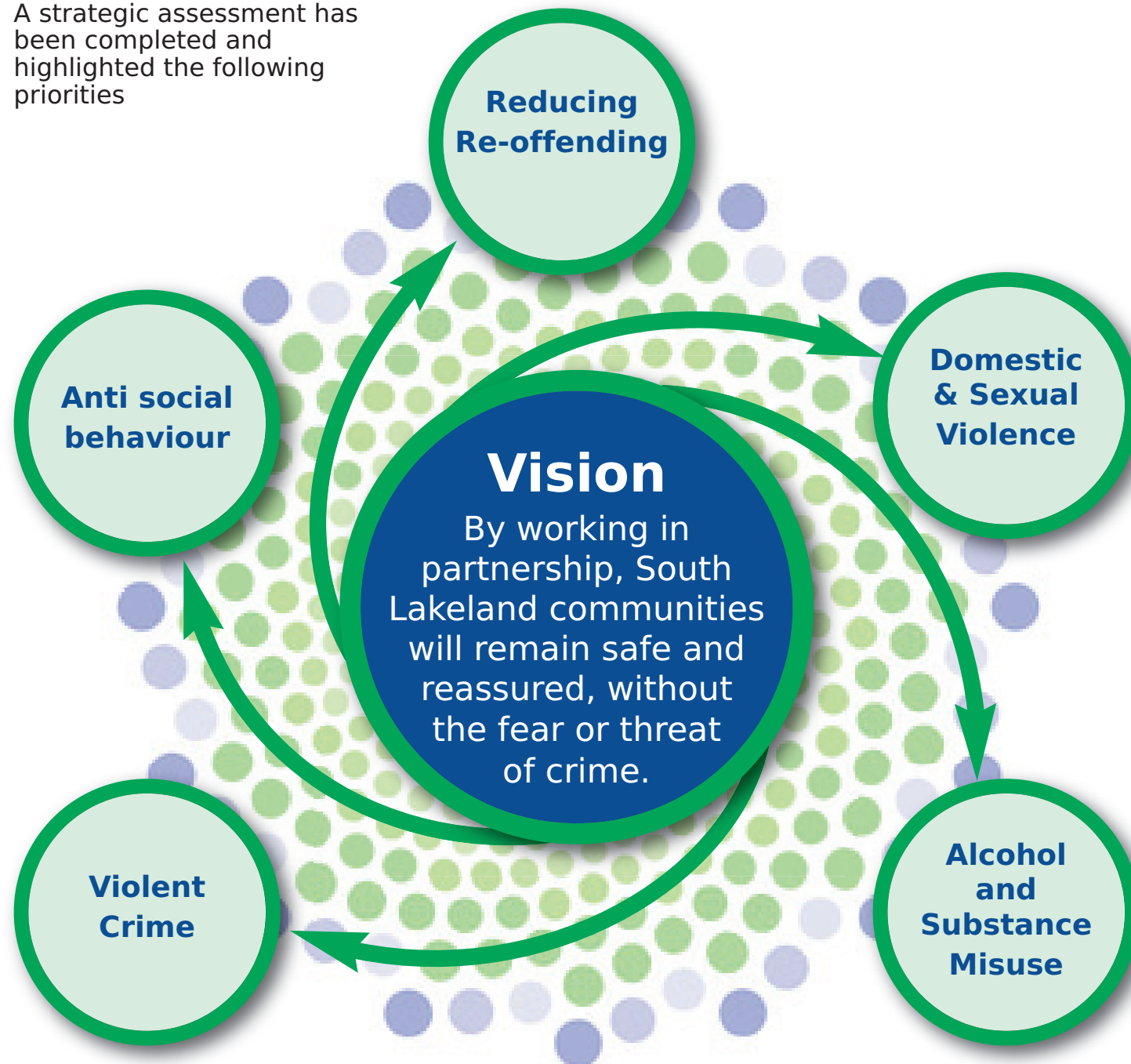


# South Lakeland CSP Partnership Plan Refresh 2013-2014

## Key Priorities 2013-14

A strategic assessment has been completed and highlighted the following priorities



## Statistics 2012/13

(compared with previous year)

- 622 fewer victims of crime
- 127 fewer victims of violence against the person
- 328 fewer victims of criminal damage
- 414 fewer victims of anti-social behaviour
- 418 fewer victims of youth anti-social behaviour
- Reported incidents of domestic violence increased from 791 to 811
- Number of incidents of domestic violence with repeat victims reduced from 296 to 266

## Targets 2013/14

- Increase the reporting of domestic violence incidents
- Reduce the number of repeat victims of domestic violence
- Reduce the number of violent crimes related to the night time economy
- Maintain a reduction in anti social behaviour incidents across South Lakeland
- Reduce the re-offending rate of the IOM cohort

By meeting these targets, maintain South Lakeland's position in the top 25% of our most similar CSP group

## Tackling the Priorities 2013-14

<b>Alcohol and Substance Misuse</b>	<ul style="list-style-type: none"> <li>• Reduce the impact of alcohol related crime and substance misuse in our communities</li> <li>• Deliver outcomes in the revised South Cumbria Alcohol Strategy 2013-15</li> <li>• Maintain existing shopwatch schemes in town centres and tackle drug related acquisitive crime*</li> </ul>
<b>Violent Crime</b>	<ul style="list-style-type: none"> <li>• Maintain existing barwatch schemes throughout the district and develop new schemes as agreed*</li> <li>• Work with partners to reduce violent crime and assaults*</li> <li>• Develop the Domestic Violence champions network through awareness raising and training</li> </ul>
<b>Domestic and Sexual Violence</b>	<ul style="list-style-type: none"> <li>• Maintain effective monthly Multi Agency Risk Assessment Conferences (MARAC)</li> <li>• Support the existing Independent Domestic Advisor (IDVA) and Independent Sexual Violence Advisor (ISVA) services and continuance of specialist DV courts</li> <li>• Raise awareness of changes to DV legislation</li> <li>• Develop the Women's Community Project for women with complex needs, including victims of domestic abuse</li> </ul>
<b>Reducing Re-offending</b>	<ul style="list-style-type: none"> <li>• Target the most prolific offenders to reduce their impact on local communities</li> <li>• Maintain the Integrated Offender Management programme</li> <li>• Encourage the use of community interventions, including restorative justice</li> </ul>
<b>Anti Social Behaviour</b>	<ul style="list-style-type: none"> <li>• Reduce anti social behaviour and deal effectively with repeat victims</li> <li>• Maintain the Multi Agency Anti Social Behaviour Risk Assessment panel</li> <li>• Deliver positive youth projects to prevent future offending (based on local information)</li> </ul>
<p><b>The South Lakeland Community Safety Partnership regularly monitor local crime statistics and will respond to significant changes by refocusing resources appropriately.</b></p>	

\* Supporting Business Against Crime South Lakeland Partnership (BACSLP)



[www.onesouthlakeland.org.uk/community-safety-partnership.aspx](http://www.onesouthlakeland.org.uk/community-safety-partnership.aspx)

# South Lakeland CSP Partnership Plan Refresh 2013-2014

## Message from South Lakeland Community Safety Partnership's (CSP) Chair

Our vision is to keep South Lakeland communities safe, without the fear or threat of crime. To achieve this, CSP partners have agreed key areas of work for 2013/14, using information from the 2012 Cumbria Community Safety Strategic Assessment.

These are:

- alcohol and substance misuse
- domestic and sexual violence
- violent crime, anti social behaviour

- reducing re-offending

We know these have the greatest impact on our communities and that alcohol misuse is a significant contributing factor in them all. We will pool our extensive expertise, skills and resources to tackle these priorities.

I believe the CSP's greatest strength is the willingness of all partners to work together to deliver positive outcomes.

This benefits South Lakeland residents, as well as visitors to our lovely district.

I am confident that through the activity outlined in this Partnership Plan, we will continue to keep crime low and South Lakeland a safe place to live, work and explore.

**Hilary Stephenson**  
Chair

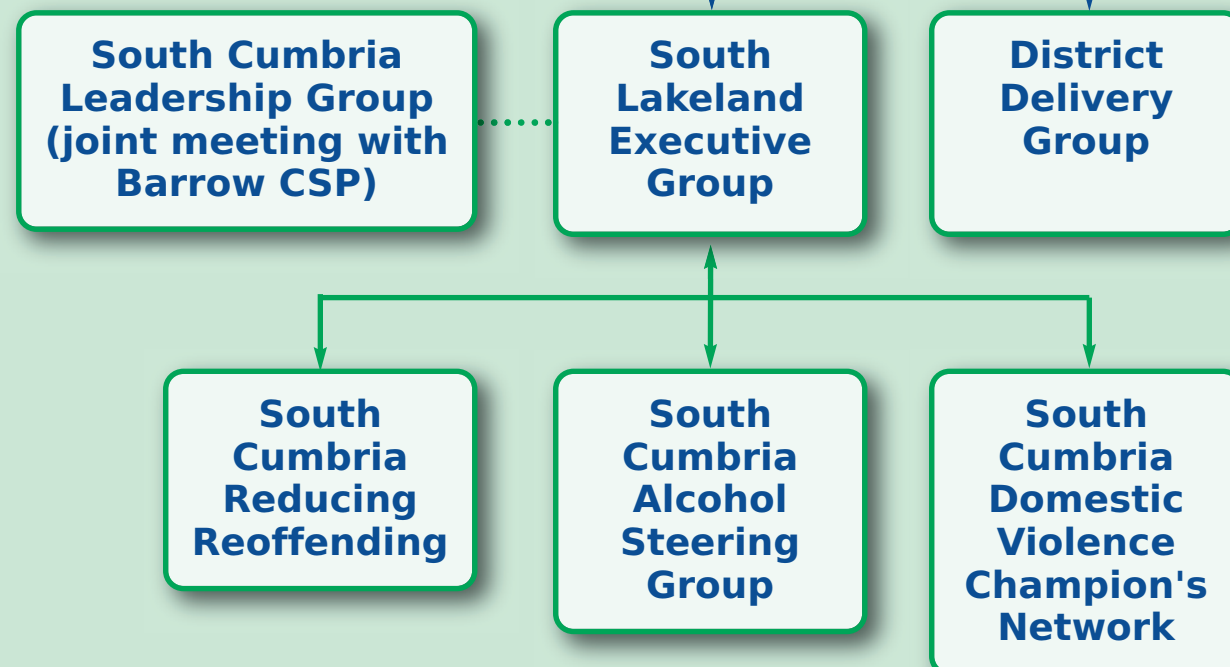
South Lakeland Community Safety Partnership

## Our Partnership Approach

CUMBRIA WIDE



SOUTH LAKELAND WIDE



## Police and Crime Commissioner (PCC) funding

South Lakeland CSP has been awarded funding to help tackle crime in South Lakeland. The funding will be allocated to projects, based on our priorities, which will make a difference in our communities.

The allocations are listed below:

Activities and interventions to reduce re-offending	£5,000
Activities and interventions to raise awareness of and tackle Domestic and Sexual Violence	£5,000
Activities and interventions to raise awareness of and tackle alcohol and substance misuse and harm to communities	£10,000
Support for Business Against Crime South Lakeland Partnership (BACSLP) to maintain and expand bar watch and shop watch schemes across the district	£7,500

## South Lakeland CSP Members

- Age UK
- Cumbria Police
- Cumbria Fire and Rescue Service
- Cumbria Probation Trust
- Cumbria County Council
- Cumbria Drug and Alcohol Action Team
- Inspira
- South Lakeland District Council
- South Lakeland Magistrates
- Unity
- Youth Offending Services



[www.onesouthlakeland.org.uk/  
community-safety-partnership.aspx](http://www.onesouthlakeland.org.uk/community-safety-partnership.aspx)