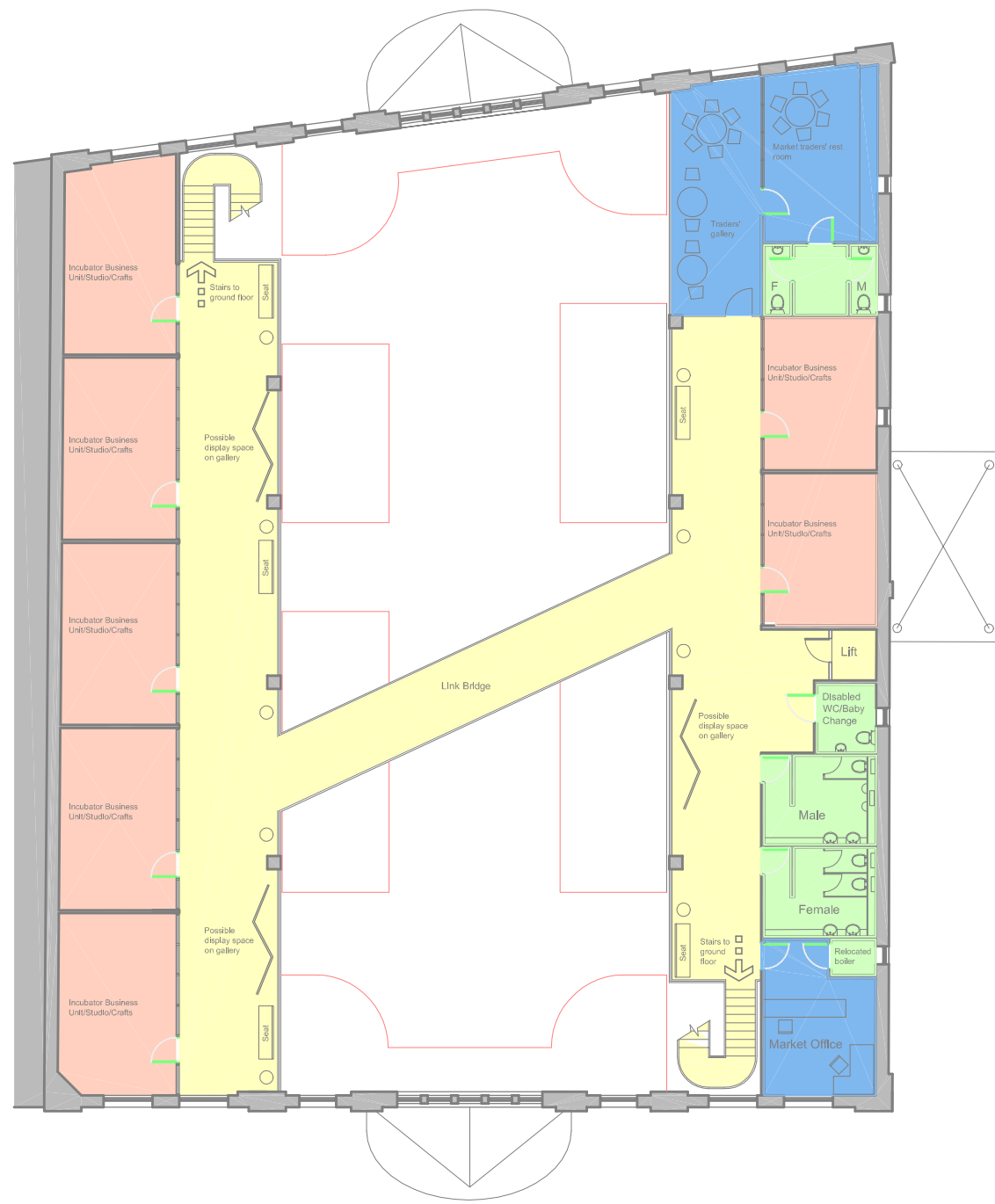
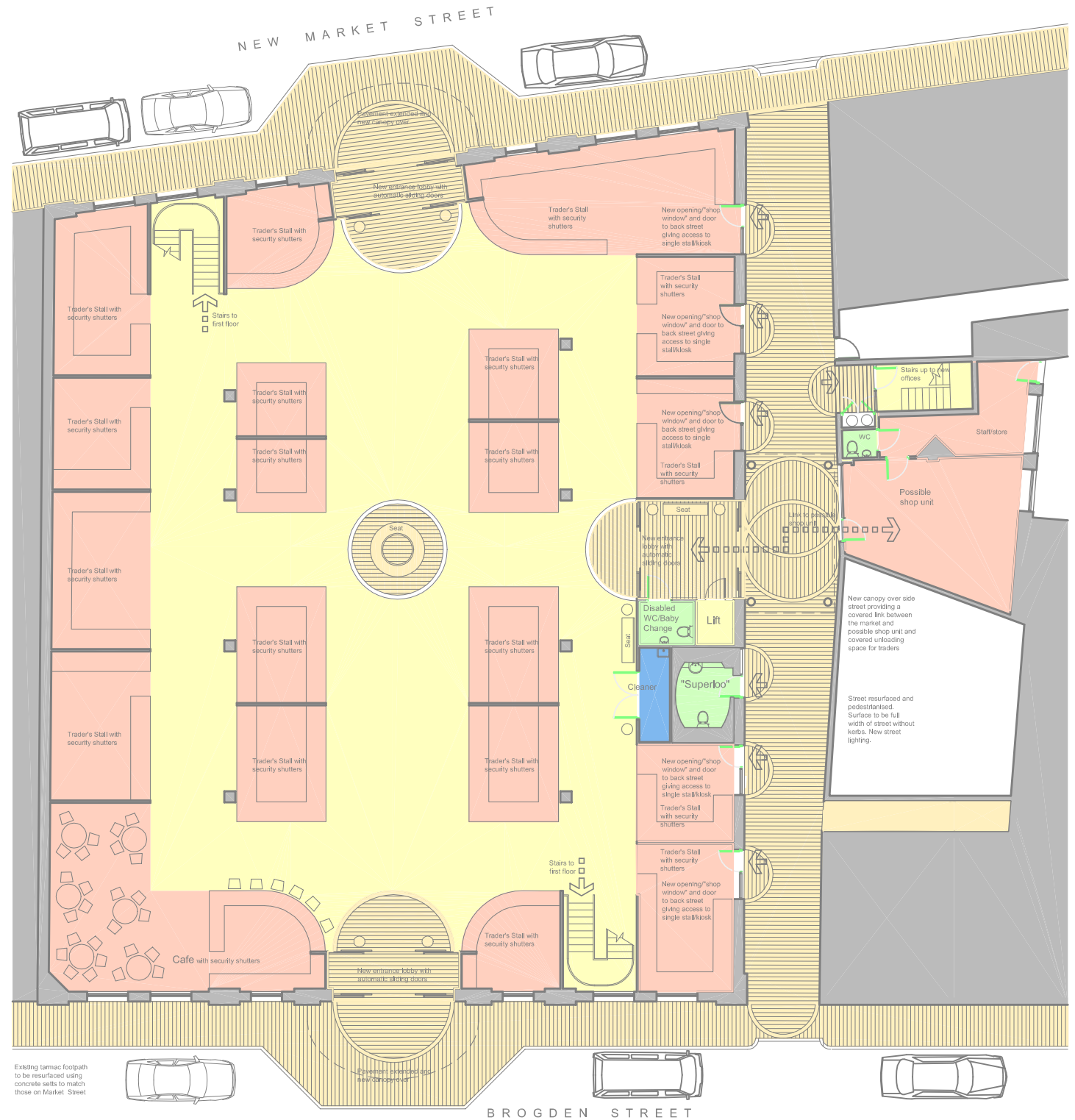


ULVERSTON TOWN CENTRE MASTERPLAN



First Floor Plan

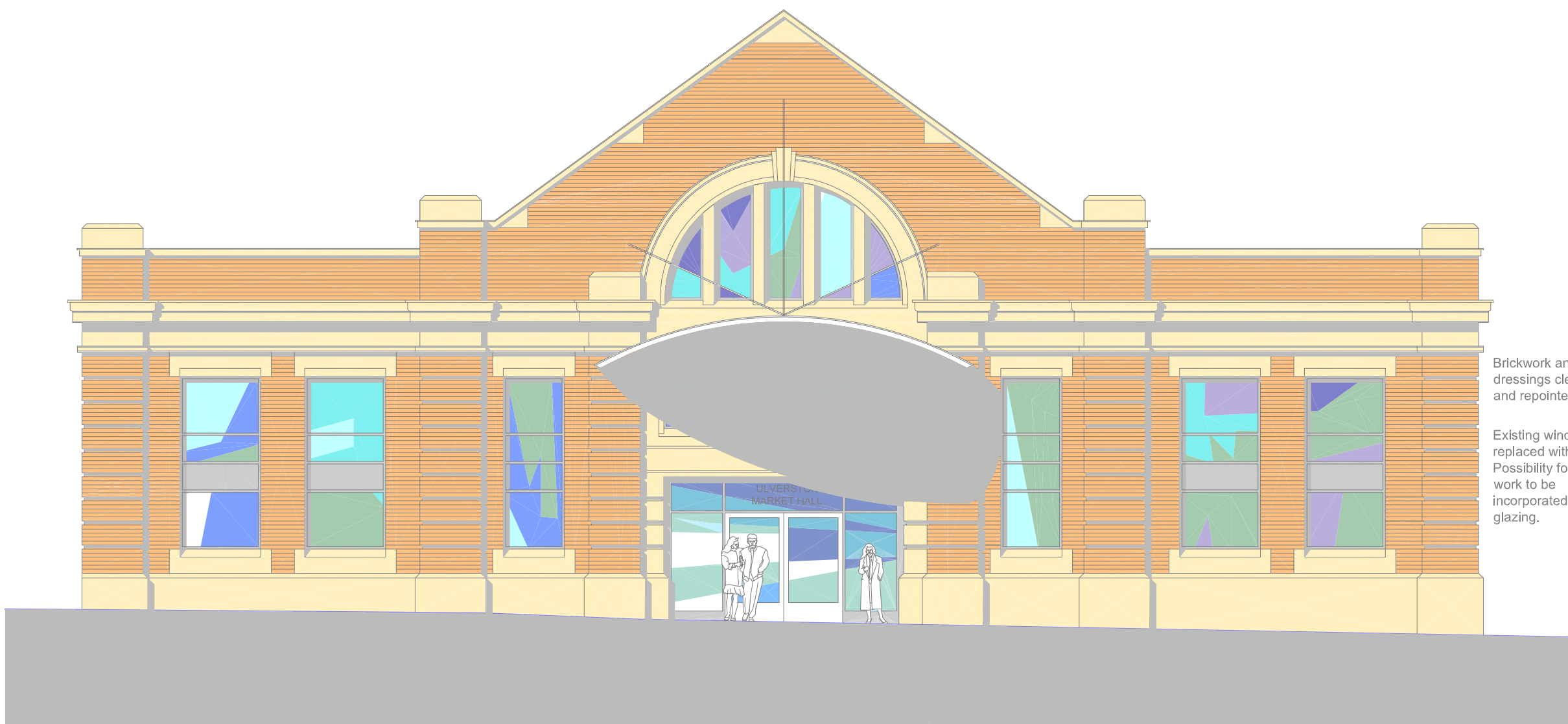


Ground Floor Plan

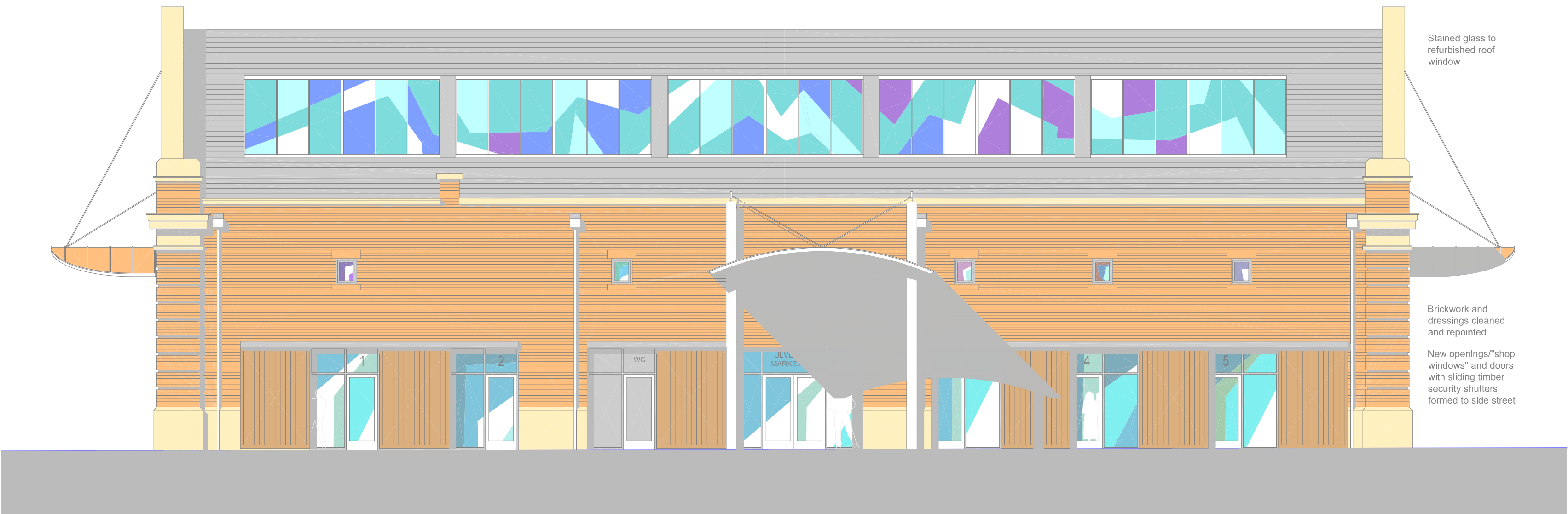
ULVERSTON TOWN CENTRE MASTERPLAN



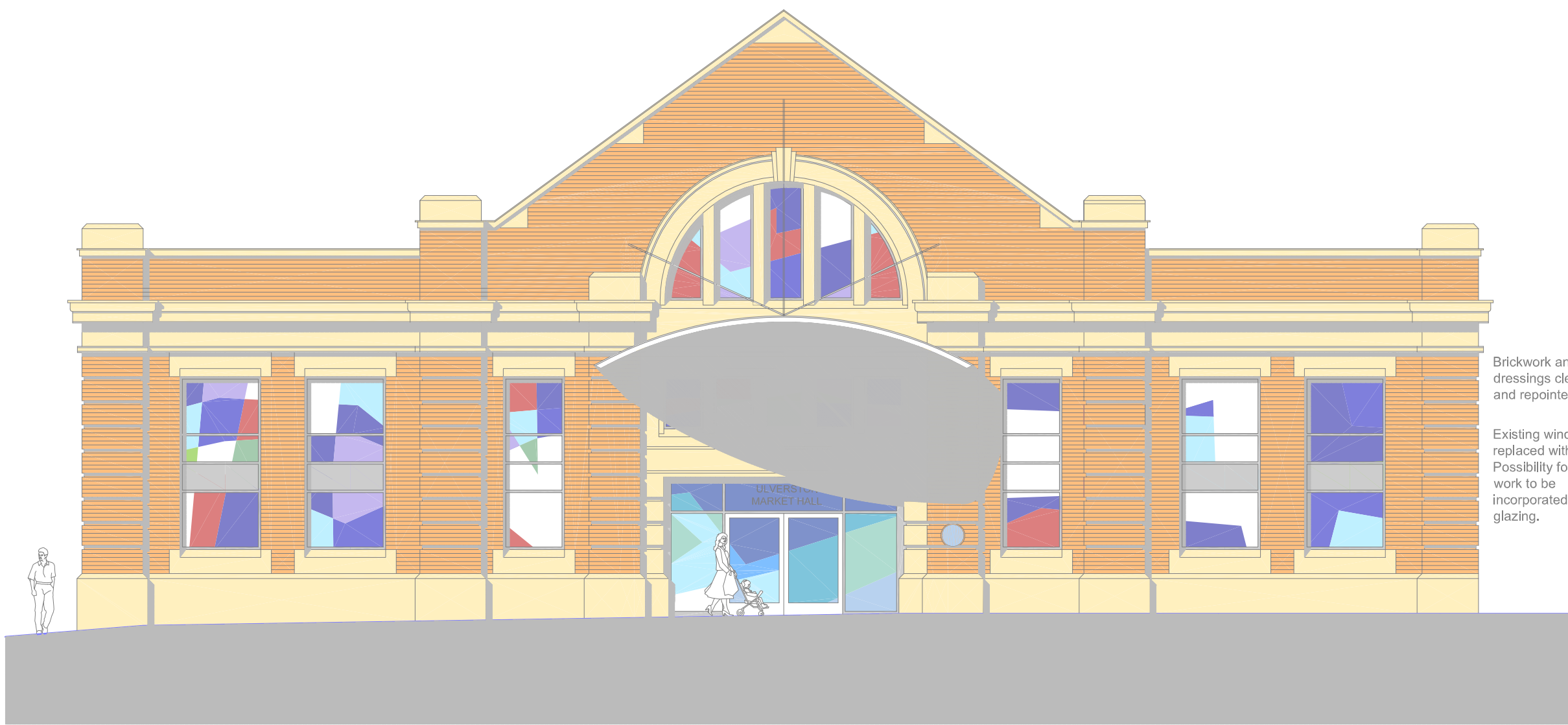
ULVERSTON TOWN CENTRE MASTERPLAN



Elevation to Brogden Street



Elevation to Side Access Lane (major improvement scheme)

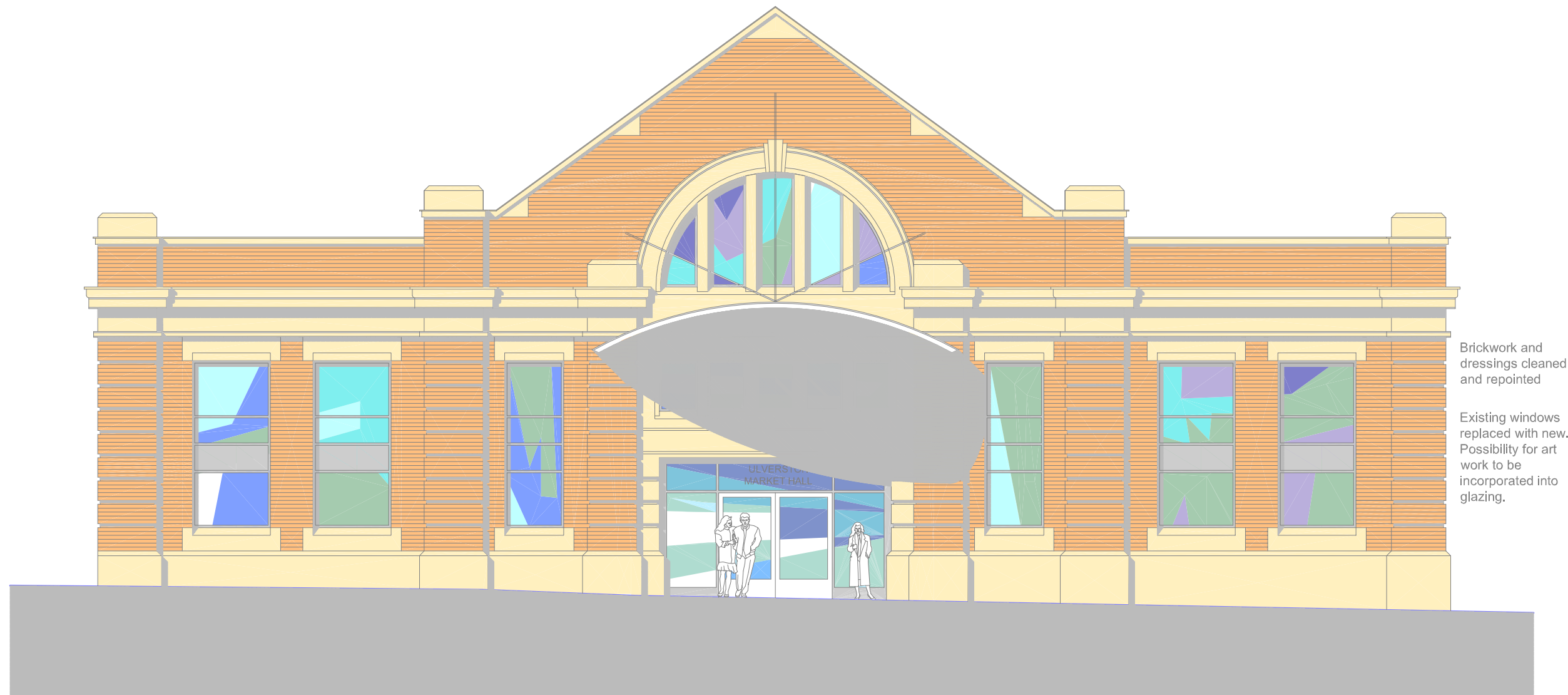


Elevation to New Market Street



Section (major improvement scheme)

ULVERSTON TOWN CENTRE MASTERPLAN



Brickwork and dressings cleaned and repointed

Existing windows replaced with new. Possibility for art work to be incorporated into glazing.

Entrance to market hall refurbished with new automatic sliding doors and cantilevered canopy over.

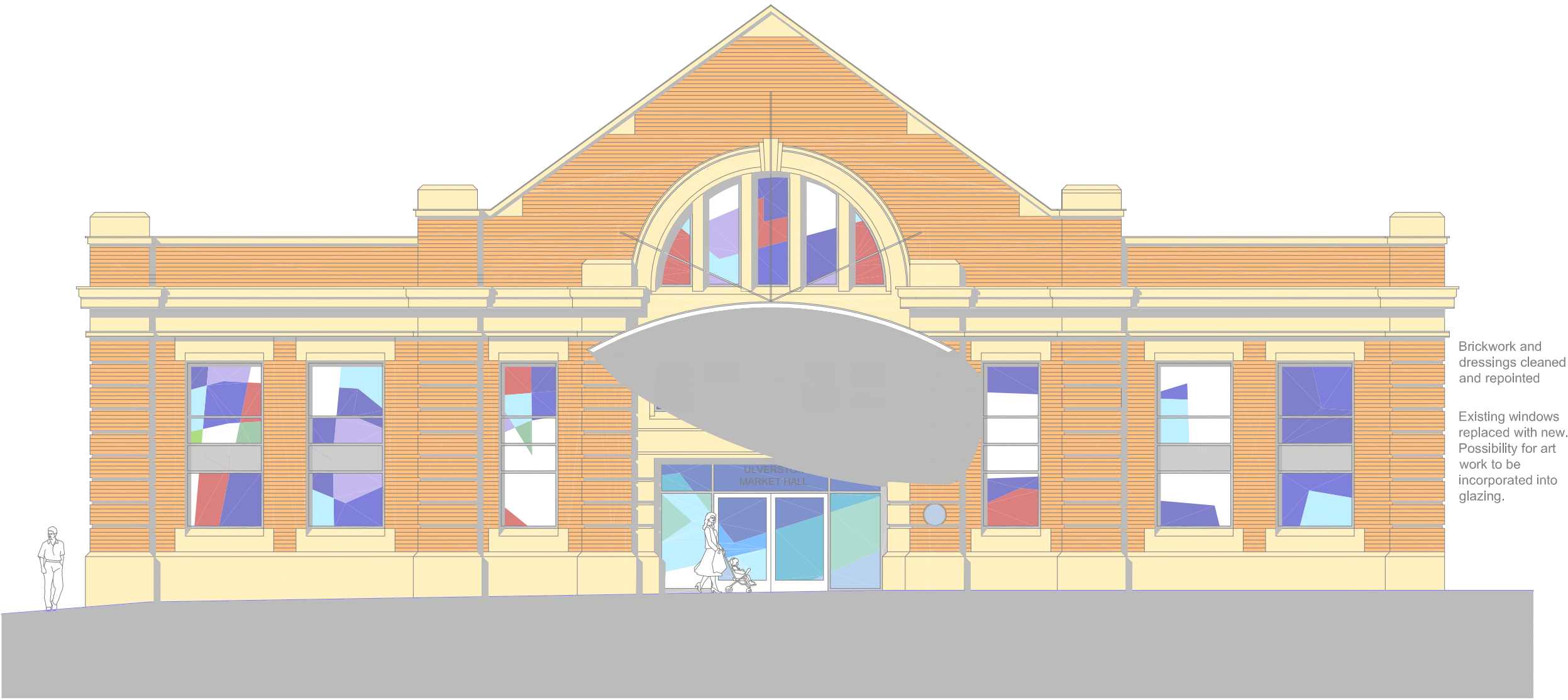
Elevation to Brogden Street

ULVERSTON & LOW FURNESS
PARTNERSHIP

Market Hall As Proposed
Major Improvement Scheme

CAPITA SYMONDS

ULVERSTON TOWN CENTRE MASTERPLAN

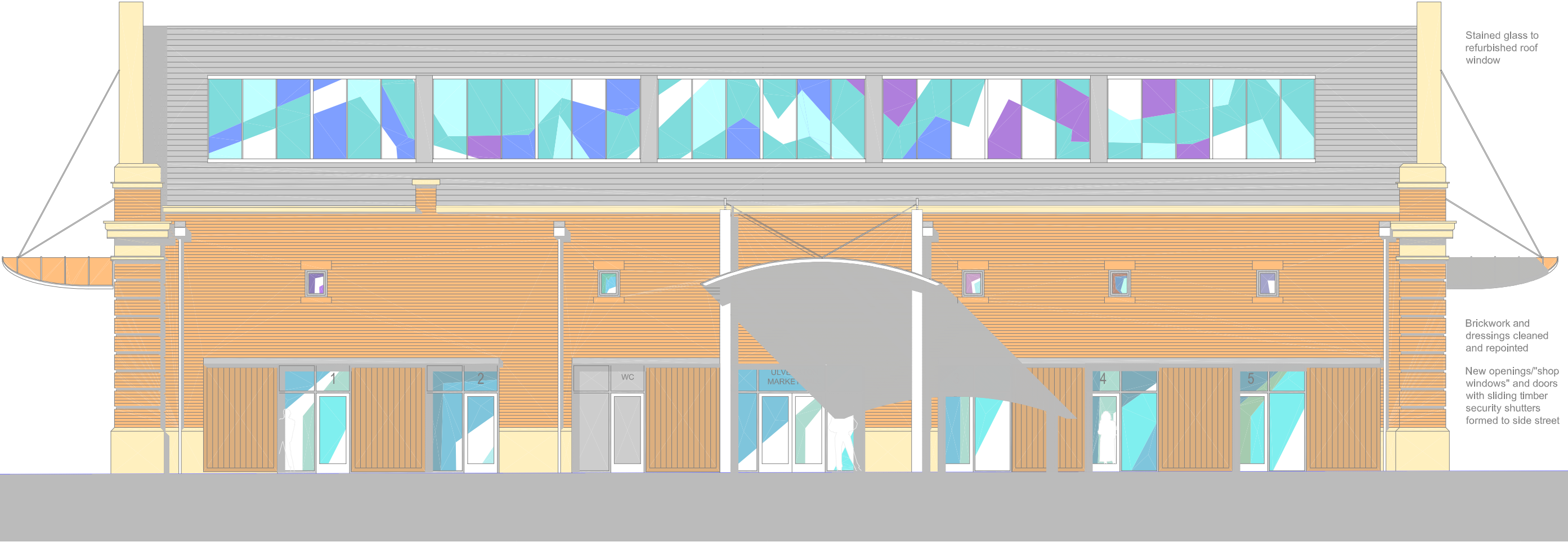


Elevation to New Market Street

Entrance to market hall refurbished with new automatic sliding doors and cantilevered canopy over.

Brickwork and dressings cleaned and repointed
Existing windows replaced with new. Possibility for art work to be incorporated into glazing.

ULVERSTON TOWN CENTRE MASTERPLAN



Elevation to Side Access Lane (major improvement scheme)

New entrance to market hall formed from side street. New canopy over to provide covered link between the market and possible shop unit on other side of street and covered unloading space for traders.

ULVERSTON TOWN CENTRE MASTERPLAN



Section (major improvement scheme)



Artistic focal points



Bespoke railings



Interpretative signage



Seating



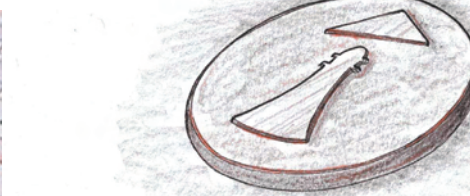
Planters



Themed approach
An example of a themed approach used for the Ulverston (Rope Walk) Greenway. Rope walk theme used in the design for a suite of street furniture



Paving including marker stones



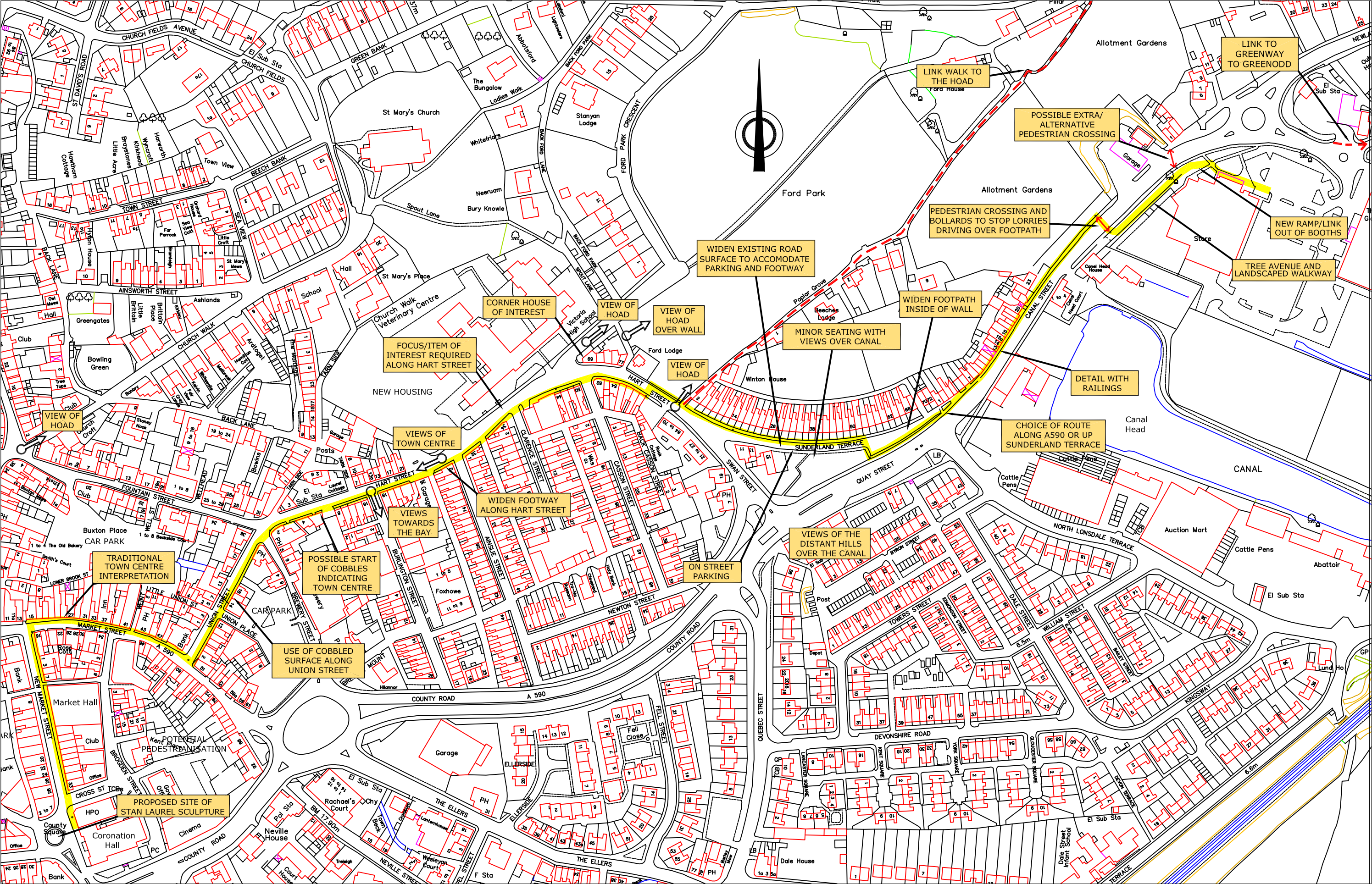
Marker stones
An image of the Hoad, The Hearts of Oak or Laurel and Hardy. Markers set into stones and installed periodically along the route. Also can be used to show measured distances between Canal and Town Centre

SMART for Ulverston

- | | |
|--|--|
| <p>S Signed</p> <p>M Measured</p> <p>A Artistic</p> <p>R Realistic</p> <p>T Targets</p> | <ul style="list-style-type: none"> - Signed route by directional posts, marker stones - Distance markers showing the distance to Canal or Town Centre (very useful for healthy walking) - Artistic paving, artistic focal points and artistic marker stones - Realistic targets set for achieving the goal; realistic paving, realistic costs, realistic schemes - County Square and Canal Head |
|--|--|

ULVERSTON TOWN CENTRE MASTERPLAN

STRAND 3 - CANAL LINK



ULVERSTON & LOW FURNESS
PARTNERSHIP

This drawing has been prepared as part of the Ulverston Town Centre masterplan. The details are a summary of discussions and site survey by artist, highway engineer and landscape architect. This plan serves as an outline for future proposals.

The Ulverston Town Centre *link* aims to be **SMART** for Ulverston

- S** Signed - A signed route (posts, marker stones)
- M** Measured - Distance (measured in metres)
- A** Artistic - Artistic elements
- R** Realistic - Realistic targets and schemes
- T** Targets - Targets of Canal and County Square

For examples of artistic elements see illustrations of artistic & interpretative street furniture, paving & signs.

The approach of the route is to create a themed approach by using recognisable elements such as **the Hoad, Laurel and Hardy** and **Hearts of Oak** boat symbols. Particularly effective on **marker stones** set into the paving and kerbstones along the route.

JUNE 2005

SCALE 1:1250@A1

PROPOSED PEDESTRIAN LINK
(OVERALL DISTANCE 0.8km)

→ SIGNIFICANT VIEWS

CAPITA SYMONDS