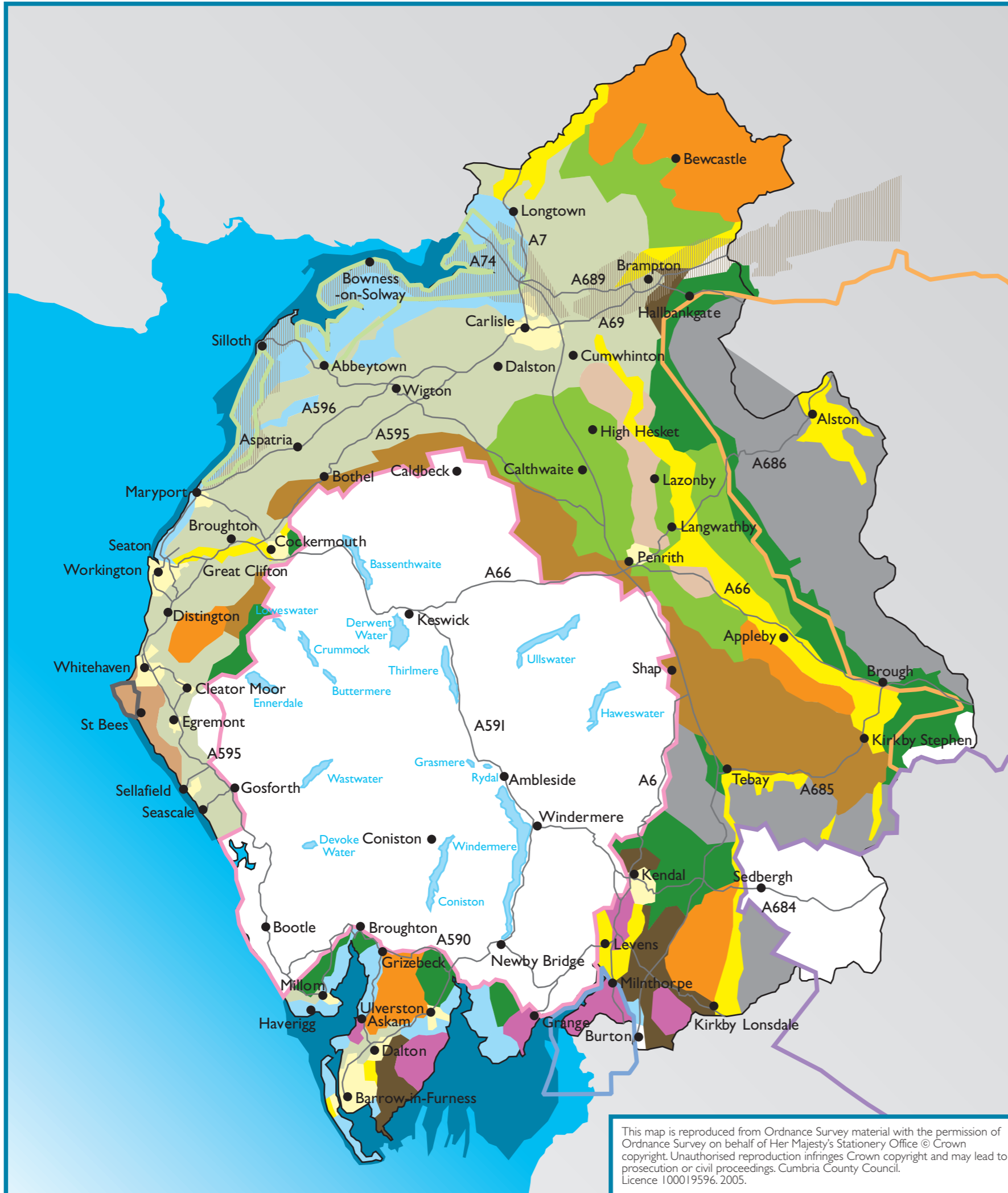


**Landscape Character  
Classification (1995)**

**Map 7**

This map should be read in conjunction with the Landscape Capacity Assessment Findings in Part 2. When considering the potential acceptability of a scheme all other planning issues set out in the SPD must be considered. This map is indicative only.



**Key**

- Lake District National Park
- North Pennines AONB
- Solway Coast AONB
- Yorkshire Dales National Park
- Arnside and Silverdale AONB
- Frontiers of the Roman Empire: Hadrian's Wall
- St Bees Heritage Coastline
- Cumbria County Council Boundary

**Cumbria Landscape Classification**

- Type 1 - Estuary and Marsh
- Type 2 - Coastal Margins
- Type 3 - Coastal Limestone
- Type 4 - Coastal Sandstone
- Type 5 - Lowland
- Type 6 - Intermediate Land
- Type 7 - Drumlins
- Type 8 - Main Valleys
- Type 9 - Intermediate Moorland Plateau
- Type 10 - Sandstone Ridge
- Type 11 - Upland Fringes
- Type 12 - Higher Limestone
- Type 13 - Fells and Scarp
- Type 14(U) - Urban Area

**Landscape Character Type and Sub Types**

- |  |   |  |
|--|---|--|
| <p><b>1 Estuary and Marsh</b></p> <ul style="list-style-type: none"> <li>1a Intertidal Flats</li> <li>1b Coastal Marsh</li> </ul> <p><b>2 Coastal Margins</b></p> <ul style="list-style-type: none"> <li>2a Dunes and Beaches</li> <li>2b Coastal Mosses</li> <li>2c Coastal Plain</li> </ul> <p><b>3 Coastal Limestone</b></p> <ul style="list-style-type: none"> <li>3a Open Farmland and Pavements</li> <li>3b Wooded Hills and Pavements</li> <li>3c Disturbed Areas</li> </ul> <p><b>4 Coastal Sandstone</b></p> <p><b>5 Lowland</b></p> <ul style="list-style-type: none"> <li>5a Ridge and Valley</li> <li>5b Low Farmland</li> <li>5c Rolling Lowland</li> <li>5d Drained Mosses</li> </ul> <p><b>6 Intermediate Land</b></p> <p><b>7 Drumlins</b></p> <ul style="list-style-type: none"> <li>7a Low Drumlins</li> <li>7b Drumlin Field</li> <li>7c Sandy Knolls and Ridges</li> </ul> | <p><b>8 Main Valleys</b></p> <ul style="list-style-type: none"> <li>8a Gorges</li> <li>8b Broad Valleys</li> <li>8c Valley Corridors</li> <li>8d Dales</li> </ul> <p><b>9 Intermediate Moorland and Plateau</b></p> <ul style="list-style-type: none"> <li>9a Open Moorlands</li> <li>9b Rolling Farmland and Heath</li> <li>9c Forests</li> <li>9d Ridges</li> </ul> <p><b>10 Sandstone Ridge</b></p> <p><b>11 Upland Fringes</b></p> <ul style="list-style-type: none"> <li>11a Foothills</li> <li>11b Low Fells</li> </ul> <p><b>12 Higher Limestone</b></p> <ul style="list-style-type: none"> <li>12a Limestone Farmland</li> <li>12b Rolling Fringe</li> <li>12c Limestone Foothills</li> <li>12d Moorland and Commons</li> </ul> | <p><b>13 Fells and Scarps</b></p> <ul style="list-style-type: none"> <li>13a Scarps</li> <li>13b Moorland, High Plateau</li> <li>13c Fells</li> </ul> <p><b>14(U) Urban Areas and Fringes</b></p> <ul style="list-style-type: none"> <li>2d Coastal Urban Fringe</li> <li>5d Urban Fringe</li> </ul> |
|--|---|--|

This map is reproduced from Ordnance Survey material with the permission of Ordnance Survey on behalf of Her Majesty's Stationery Office © Crown copyright. Unauthorised reproduction infringes Crown copyright and may lead to prosecution or civil proceedings. Cumbria County Council. Licence 100019596. 2005.

