

South Lakeland CSP Partnership Plan Refresh

2011-2012



**SOUTH LAKELAND
COMMUNITY
SAFETY
PARTNERSHIP**



Contents

	page
1. Introduction	3
1.1 Background	3
2. The Current Picture	3
2.1 What you have said	4
2.2 Key projects and achievements 2010/2011	4
3. Developing The Plan	5
3.1 Vision of South Lakeland CSP	5
3.2 Partnership Structure	5
3.3 The Priorities	6
4. Tackling The Priorities	7
4.1 Alcohol related harm	7
4.2 Domestic Violence	7
4.3 Reduce re-offending	8
4.4 Partnership Communications	8
5. Performance Reporting	9
6. Resourcing The Plan	9
7. Summary	10
8. Publication and Acknowledgements	10
9. Want to Contribute?	10
10. Contact Details	11

If you would like a copy of this document in another format such as large print, Braille, audio or in a different language, please call **0845 050 4434** or email **customer.services@southlakeland.gov.uk**



1. Introduction

1.1 Background

South Lakeland Community Safety Partnership (SLCSP), formerly South Lakeland Crime and Disorder Reduction Partnership, is made up from a mixture of organisations and voluntary groups who work together with a common aim to reduce crime, disorder and re-offending in the area and to maintain South Lakeland's position as one of the safest districts in the North West.

SLCSP has a duty to review local community safety and crime priorities every year and this is known as the Strategic Assessment. The Executive Summary can be viewed at www.southlakeland.gov.uk/pdf/SLCSP%20-%20Strategic%20Assessment%20Exec%20Summary%20Oct%202010.pdf

The information is used to develop a Partnership Plan that clearly sets out how we will tackle key priorities, identified through community and partner consultation and supports strategic decision making from April 2011 to March 2012. Through this and associated action plans, South Lakeland CSP will contribute to the strategic outcomes of the South Lakeland Sustainable Community Strategy and the Cumbria Community Safety Plan.

The Partnership Plan offers an opportunity for us to work more closely towards a common aim, to maintain South Lakeland as a safe place to live work and visit.

2. The Current Picture

The aim of South Lakeland CSP is to keep crime levels low and provide reassurance to local communities. Even though South Lakeland has some of the lowest crime figures in the North-West region, there are still issues of concern to people and crime 'hotspot' areas which need targeted actions. The figures from April 2010 to March 2011 show that overall, crime continues to decrease in South Lakeland, compared to the same period in 2009 / 2010. A snap shot of main statistics tells us:-

- Overall crime levels **reduced** by 277 offences (6%)
- Anti social behaviour **reduced** by 665 incidents (13%)
- Criminal damage **reduced** by 27 offences (2%)
- Assault with injury **reduced** by 27 offences (7%)
- House burglary **decreased** by 56 offences (37%)
- Theft from a vehicle **reduced** by 2 offences (1%)
- Theft of a vehicle **reduced** by 27 offences (33%)
- Reports of domestic violence incidents have **increased** by 59 (8%)
- Offences involving drugs supply and possession have **increased** by 45 (16%)

Domestic violence and drug offences are the 2 categories of crime when an increase in reporting is considered a positive. Research suggests that increased confidence in the services provided for victims of domestic abuse leads to more incidents being reported. Increases in drug offences are the result of specific operations to target drug trafficking and leads to a decrease in availability of drugs on the street.

2.1 What you have said

Respondents to the Interim Place Survey (IPS) conducted in 2009 and the Community Safety Survey (CSS) 2010 gave us the following information, based on their views, perceptions and experiences of where they live

- Only **9%** think the level of crime in South Lakeland should be a priority for improvement although 53% think the level of crime is important in making somewhere a good place to live (IPS)
- **98%** feel safe out and about in their local area during the day and 80% feel safe out and about in their local area after dark, significantly above the Cumbria average (CSS)
- **10%** think anti social behaviour is a problem in South Lakeland, compared to 15% in Cumbria (IPS)
- **45%** agreed the police and other services are dealing effectively with anti social behaviour and crime issues that matter in their area (CSS)
- **50%** think parents take responsibility for their children, compared with 39.5% in Cumbria (IPS)
- **15%** think drunk or rowdy behaviour is a problem, a 5% decrease compared with 2008 (IPS)
- **16%** think drug use or drug dealing is a problem, a decrease of almost 4% compared with 2008 (IPS)

2.2 Key projects and achievements in 2010 / 2011

- Directed youth work projects delivered by Young Cumbria in identified locations across the district
- Worked with young people at risk in group sessions or 1 to 1 basis, offering a broad range of engagement options through the Straightline Stars programme
- Targeted licensed premises and under age alcohol sales through Operation Siskin, Police and Trading Standards test purchase operations
- Worked with the Impact Housing KISS project, Cumbria County Council and Cumbria Probation Trust to transform Romney Road underpass with new lighting and a mosaic art project
- Supported the Age UK intergenerational project - Common Ground to challenge perceptions and deliver sustainable activity across South Lakeland
- Developed and published the 'Alcohol and your child' booklet for wide distribution to parents, guardians and carers of young people
- Provided funding to purchase 4 mobile domestic violence alarms for those at high level risk of violence
- Operation Sapphire targeted the early evening night time economy, with high visibility police patrols as an early intervention tactic and utilising 'head cams' to capture evidence
- Joint licensing and enforcement work between SLDC and Cumbria Police targeted licensed premises where poor management had become an issue
- Published the South Lakeland Best Practice Licensing Guide and the rollout of a consistently managed bar watch scheme to Ambleside and Ulverston
- Raised awareness of a range of 'Watch schemes' across the district and made a financial contribution to Cumbria Alert community messaging system managed by Neighbourhood Watch in Cumbria

- Provided crime prevention advice leaflets, advertised on the reverse of SLDC car park tickets and property coding kits to combat burglary, vehicle and bike theft
- Worked with Barrow CDRP and Cumbria Probation Trust to meet the requirement to reduce re-offending in the district through the adaptation of existing structures

3. Developing The Plan

Community Safety Partnerships, or Crime and Disorder Reduction Partnerships as some are still known, remain statutory partnerships and are a key element of the Coalition Government's strategy to tackle crime and disorder at local level. This Plan is based on the priorities identified in the Strategic Assessment and will be revised annually, in line with current national requirements.

The high level Plan sets out how the CSP intends to reduce crime, disorder, substance misuse and reduce re-offending in South Lakeland. Providing reassurance to our communities and increasing public confidence in the work of South Lakeland CSP, is also a key element of our work.

For 2010/11, a new structure supports the work of SLDCSP, with task and finish groups delivering key work that seeks to address the negative impacts of alcohol misuse. It is anticipated that tackling this critical issue will have a positive impact on the 4 priority areas of work and ultimately reduce crime statistics even further.

This revised structure, shown at Fig 1, is considered the most effective way to address the priorities identified by the Strategic Assessment, whilst taking account of the many changes taking place within the public and voluntary sector organisations that form the Partnership. Over the next 12 months, the Partnership will respond flexibly to further changes and emerging issues, as necessary, and will also review the effectiveness of this structure.

The Executive Group will continue to provide strategic direction and monitor performance, through bespoke performance management systems, such as the Tracker Tools and the Home Office IQUANTA performance tool, both based on crime data. This enables SLDCSP to assess performance against other CSPs in the north-west region and our Most Similar Group (MSG) nationally.

How we communicate successes and achievements of the partnership is an essential part of the Plan. Current arrangements are being reviewed and the potential use of social networking sites and community messaging tools, are part of the range options being considered.

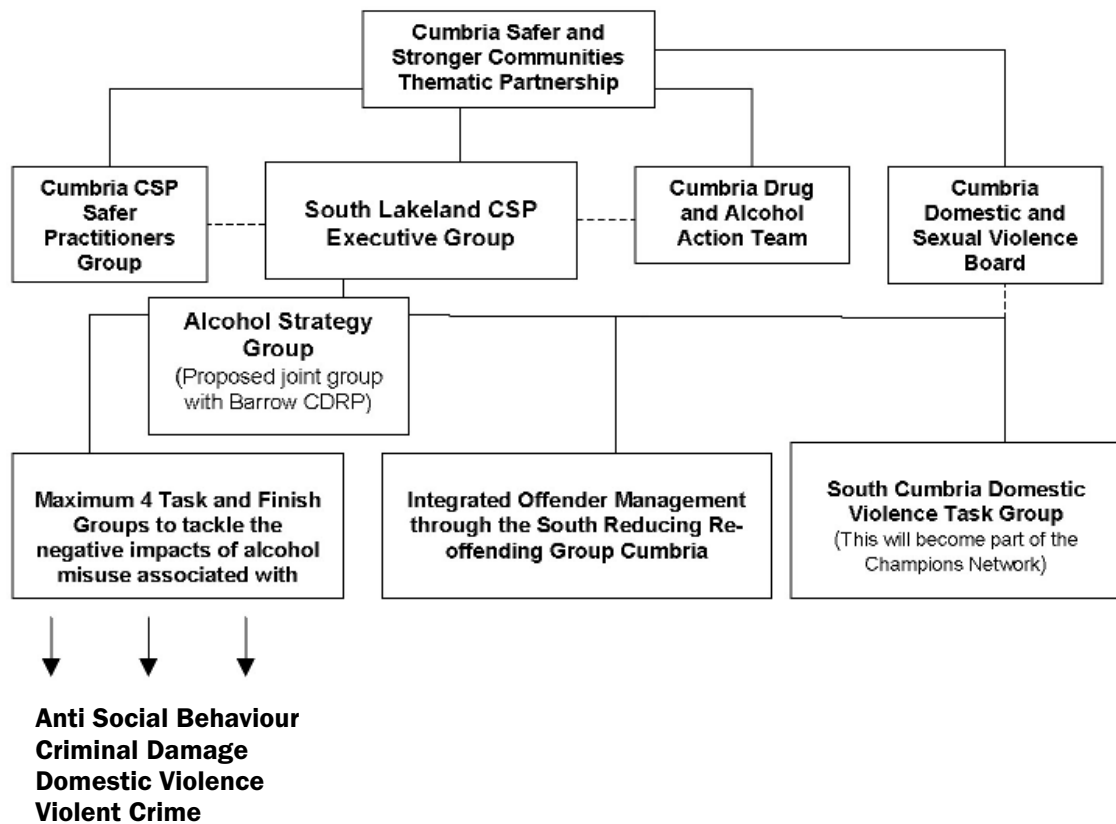
3.1 Vision of South Lakeland CSP

The vision of South Lakeland Community Safety Partnership

“By working in partnership, South Lakeland communities will remain safe and reassured, without the fear or threat of crime”

3.2 South Lakeland Partnership Structure

South Lakeland CSP is part of a complex group of partnerships and because of ongoing changes in the county wide partnership landscape, the structure and reporting lines shown in Fig 1 are not yet confirmed, but links to key sub regional groups that currently include the Safer and Stronger Communities Thematic Partnership, Cumbria Drug and Alcohol Action Team (DAAT) and Cumbria Domestic and Sexual Violence Board are expected to remain. These help to set the wider context in which the Partnership operates.

Fig. 1 South Lakeland CSP structure diagram

3.3 The Priorities

The Executive Group agreed the following priorities for 2011 / 2012 to be addressed within a revised structure, using task and finish groups.

- Anti social behaviour, including youth disorder
- Criminal damage
- Violent Crime
- Domestic Violence

When we examine the underlying causes relating to these priorities, there is one common issue; the impact from the negative use of alcohol. Local data and national research have shown that alcohol is a contributing factor in just over 50% of domestic violence incidents and the same applies to violent crime. The Executive Group has agreed that addressing the impacts of alcohol misuse will be the focus of CSP work over the next 12 months, starting in April 2011.

Public reassurance and improved community involvement remain key areas for development and SLCSPP will take account of any relevant and appropriate work undertaken by other partnerships.

To avoid duplication of both effort and resource, we will continue to work with Barrow CDRP through existing joint groups, e.g. the South Reducing Re-offending Group, working to reduce re-offending and the South Cumbria Domestic Violence Champion Network.

We will further explore other opportunities to work on joint projects, specifically related to alcohol misuse and to the benefit of our communities and partners. For example, the

setting up a cross district Alcohol Steering Group with Barrow CDRP and potential joint commissioning of activity.

The existing partnership groups listed below will continue to address the following:-

- Road safety to be addressed through the Cumbria Road Safety Partnership
- Business crime to be addressed through the Business Against Crime South Lakeland Partnership
- Hate Crime to be considered by the South Lakeland Equality and Diversity Partnership

Any issues or concerns discussed by these existing partnerships can be raised with the CSP Executive Group.

Substance Misuse (Drugs) remains an issue in South Lakeland and the CSP will continue to work with Cumbria Drug and Alcohol Action Team (DAAT) to determine what added value the Partnership can offer.

Any activity planned by South Lakeland CSP will include the core elements of prevention, education, enforcement and reassurance. All tactics, actions, projects, tasks etc will fall in to one or more of these categories and must link to the key priorities. This especially applies to any projects funded through the Local Services Support Grant, managed by South Lakeland CSP

4. Tackling The Priorities

4.1 Alcohol related harm

Although South Lakeland CSP has already agreed to a revised structure of task and finish groups to deliver local activity, we are also working with Barrow CDRP to develop a joint overarching alcohol strategy, to ensure we make the best use of resources available. This builds on the existing collaborative working around reducing re-offending and domestic violence.

It is anticipated that this local strategy will take account of existing and evolving national and county-wide alcohol strategies, for example Time to Call Time, established good practice and include research into innovative ways to reduce alcohol related crime and harm. It is almost certain that some activity will be directed to help and benefit young people, up to the age of 25 years.

From the strategy, key projects will be identified for task and finish groups to develop and deliver. These will be concentrated around 3 key areas:-

- To reduce alcohol related crime and anti social behaviour
- To reduce economic and social harms
- To reduce harm to health

4.2 Domestic Violence

Domestic Violence is a key national and sub regional issue. It has devastating consequences for the victim, their families and the wider community. It is rarely a one-off incident and should be seen as a pattern of abusive and controlling behaviour, with the abuser exerting power of the victim. The economic and emotional costs of domestic violence in Cumbria are estimated at almost £500 per person, each year. The greatest costs are to the Criminal Justice System and Health Services. The emotional costs to families, especially children, cannot be quantified.

The Strategic Assessment, based on local statistics and national research identified alcohol as a contributory factor in 50% of reported domestic violence incidents. By focusing on the negative impact of alcohol misuse, it is anticipated this will have a positive impact on the levels of domestic violence in South Lakeland communities.

In South Cumbria, both South Lakeland CSP and Barrow CDRP work closely, with a commitment to improve services to victims of domestic violence. Over the last 3 years, we have seen the development of Specialist Domestic Violence Courts, the Independent Domestic Violence Advisor (IDVA) service and Multi Agency Risk Assessment Conferences (MARACs) all of which have had a positive impact on the numbers of domestic violence reports.

The current proposal is that the role of domestic violence task groups across Cumbria changes so that they become 'Champion Networks'. This idea has been very successful in Oxford, with positive benefits for service users.

SLCSP will support the South Cumbria Champion Network and continue to

- Raise awareness of Domestic Violence and encourage people to use services through training front line staff
- Support the role of Independent Domestic Violence Advisors (IDVAs) in South Cumbria
- Support the Multi Agency Risk Assessment Conferences (MARAC) for those at greatest risk of violence
- Support targeted publicity campaigns at key times aligned to local and national initiatives
- Provide information and guidance to the public with regards to binge drinking, pre-loading and under age drinking

4.3 Reducing re-offending

Joint agency work to target prolific and priority offenders (PPOs) is a national priority. CSPs have a responsibility to ensure that mechanisms are in place within their locality to support this joint agency work and from 1 April 2010, the CSP statutory duty was extended to include reducing re-offending.

In Cumbria, targeted work with prolific offenders is based on an integrated offender management model. Multi agency teams deliver intensive monitoring, support and supervision to PPOs, with the specific intention to reduce crime and the impact on victims, whilst making the best use of local resources.

Previously, the Scafell Project was recognized as national good practice and the impact it has had on the offence rate by those individuals managed through the scheme was significant. However, at any time, only a small percentage of offenders from South Lakeland met the requirements of the PPO classification.

In 2010, Barrow CDRP and South Lakeland CSP worked collaboratively with key partners and within this existing framework to reduce the re-offending of an additional group, using partner knowledge and expertise and offering added value interventions.

The South Cumbria Reducing Re-offending Group became effective from 1 February 2011 and is led by staff from Cumbria Probation Trust and Cumbria Constabulary. The group, which operates within existing governance arrangements, is using established assessment models to identify between 5 and 10 additional offenders to receive targeted interventions.

Clients are selected from both South Lakeland and Barrow areas, with partner capacity dictating numbers. They are considering innovative solutions to manage this new cohort of offenders, with the possibility of ex offenders working as volunteers.

SLCSP will continue to support the South Cumbria Reducing Re-offending Group and receive quarterly updates from the Chair.

4.4 Partnership Communications

Linked to all the above priorities is the need to improve the way the Partnership communicates successes and achievements as well as demonstrating our understanding that public confidence and reassurance is affected by the ability of all agencies to take community concerns seriously.

Part of the action planning process will detail how we will work more closely with the media; establishing key messages and making sure that they are given in a clear and consistent way by all partners; considering all the options for how we deliver these messages to the largest number of people. We will:-

- Develop and deliver a realistic Communication Plan for 2011/12, to include key messages for all partners
- Establish a South Lakeland CSP blog linked to SLDC's website
- Explore the use of other social media to engage with and inform a wider audience
- Support the development and roll out of the Cumbria Community Messaging system
- Fully utilise the Cumbria Community Messaging system to pass on key messages to and engage with specific localities and communities
- Encourage take up and use of this messaging tool through existing partnerships and community groups
- Support further development of Cumbria Neighbourhood Watch

5. Performance Reporting

Quarterly performance reports from Task and Finish group chairs, the Domestic Violence Champion Network and the South Cumbria IOM Implementation Group will be provided at SLCSP Executive Group meetings, along with latest crime data for South Lakeland, Cumbria and where possible comparison data for the north west region and nationally.

In line with performance reporting to the Safer and Stronger Communities Thematic Partnership, specific performance indicators will be monitored.

6. Resourcing The Plan

Funding to deliver the Partnership Plan comes from several sources, including

- mainstream funding from partners, who can deliver projects as part of their core business
- funding directed to CSPs through the Local Services Support Grant, principally to add value to existing work.

The SLCSP budget for 2011/2012 is £28,442 considerably less than 2010/2011 and this poses a potential risk to the ongoing success of the CSP to deliver a range of initiatives that have a positive impact on the lives of South Lakeland communities.

In the current financial climate, it is even more important to provide efficient services that meet community needs and reduce any possibility of duplication of resources and effort.

We will do this by working closely with partners to utilise core funding effectively and ensure that monies from the Local Services Support Grant are used to address the priorities included in this plan.

7. Summary

This is the annual refresh of the South Lakeland CSP Partnership Plan and contains information on identified priorities, how projects will be funded and how the specific work taking place in South Lakeland links to the much broader remit of partner agencies.

Actions will be delivered through a 'task and finish' process and based on the main priority themes. The Plan provides an opportunity for us to work in a different and innovative way towards a common aim, to maintain South Lakeland as a safe place to live work and visit.

8. Publication and Acknowledgements

In line with statutory requirements, the Partnership Plan is formally published and will be available in May 2011. It will be available to view on South Lakeland District Council's website and partner websites. Anyone requiring a hard copy of the Plan can contact the Partnerships and Communities Team at South Lakeland District Council, details shown below.

Partners involved in the development of the Plan are:-

- Business Against Crime South Lakeland Partnership
- Connexions Cumbria
- Cumbria Constabulary
- Cumbria County Council
- Cumbria Fire and Rescue Service
- Cumbria Police Authority
- NHS Cumbria
- Cumbria Probation Trust
- South Lakes Housing
- South Lakeland District Council
- Victim Support

9. Want To Contribute?

After reading the Plan, you may decide that you want to get more involved in community safety projects in your neighbourhood. There are a number of things you can do and if you would like more information, contact details are shown below.

There are also some simple steps to you can take to make a difference

- Report any crime you see - dial 999 in an emergency, or call Cumbria Police on 0845 33 00 247 for non-emergencies or anonymously to Crimestoppers on 0800 555 111.
- Improve security for your property and always remember to lock doors and windows on your house and vehicle
- Follow crime prevention and safety advice
- Get involved in community projects
- Join or start a Neighbourhood Watch group or community group for your area. You can get more information from you Neighbourhood Policing Team and details can be found on line at www.cumbria.police.uk or by calling 0845 33 00 247.

10. Contact Details

Further copies of this document are available from the South Lakeland District Council website www.southlakeland.gov.uk or

Partnerships and Communities
South Lakeland House
Lowther Street
Kendal
LA9 4UQ.

Tel: 01539 733333

Email: policy@southlakeland.gov.uk

