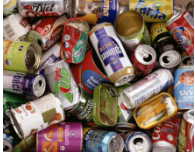


# NEIGHBOURHOOD SERVICES

## Your Waste and Recycling



### Packaging



A lot of the waste that we collect is comprised of packaging, whether cans and jars, glass and plastic bottles, cardboard boxes, food trays, the list goes on and on.



Many people are unaware that there is legislation in place to try and ensure that the amount of packaging used is no more than that required. The Packaging (Essential Requirements) Regulations of 2003 require that the weight and volume of packaging are no more than is required to maintain the required levels of safety and hygiene for the product and the amount that would be acceptable to the consumer.



Some packaging can be essential to ensure a product can be transported safely from factory or field to the household. There is also legislation in place that requires suppliers to provide information about their products. But whilst some is needed it is in the best interests of producers to avoid the cost of unnecessary packaging. Many companies are actively researching ways to reduce the amount of packaging they use, perhaps by using lighter plastic bottles, or degradable food trays rather than plastic.



However whilst legislation is one way of controlling the level of packaging consumers also have real power to influence the level of packaging used. There has been a big increase in the number of re-usable shopping bags sold by supermarkets and most shops now ask whether you need a bag rather than automatically providing one. Householders can make a real difference to the amount of packaging used by voting with their cash and buying those goods that have only the amount of packaging required for their needs.



Many items of packaging now include guidelines indicating how they can be recycled. We provide a range of services that help you recycle around South Lakeland.



### Cans

It is thought that the average household uses around 600 steel and 200 aluminium cans each year. That means over 40 million cans are used in South Lakeland every year.



Both steel and aluminium cans are not only easy to recycle but doing so also uses less resources than making new cans from scratch. Whether you use your recycling box or a can bank there is no need to separate your steel or aluminium cans, they are sorted later. We do ask householders to clean cans out as it helps keep the boxes and banks clean and by using your old washing up water to rinse out your cans it reduces the need to use water later on in the recycling process. The cans collected at the kerbside are taken to depots in Kendal and Barrow; the can banks are taken to Lancaster.

*Improving the Quality of Life in South Lakeland*

# NEIGHBOURHOOD SERVICES

## Your Waste and Recycling



They are then taken to recycling plants where the steel cans are extracted using an industrial magnet. The cans are also cleaned to remove labels and any residual waste.



The clean metal can then be melted and formed into ingots suitable for re-use. These ingots are rolled for use as required by the manufacturer. This could be to make new cans or it could be for a new fridge to put your drinks in. Every steel can contains around 25% recycled steel and around 60% of the aluminium used in the UK comes from recycled sources, further information about recycling cans is available at [www.recycle-more.co.uk](http://www.recycle-more.co.uk)

### Cardboard

The cardboard recycling facilities are provided in partnership with Barrow Borough Council and a contractor based in Barrow. There are cardboard collection banks at 16 locations around South Lakeland; each bank can hold around 75 kilos of card. The banks are emptied by hoisting the full bank above the collection wagon and releasing doors in the base of the bank, allowing the contents to drop into the wagon. The card is then taken to the depot in Barrow for baling.

After baling the card is taken to a mill for processing. The card is put into a hydropulper, where it is mixed with water to break down the fibres. It is then cleaned and any contaminants, such as staples, are removed. The resulting pulp is then dried and ready to be used in the manufacture of new cardboard products.

There are many uses for our recycled cardboard, including notepad backs, plasterboard, animal bedding and in the manufacture of training shoes.

More information about cardboard recycling is available at [www.recyclingexpert.co.uk/RecyclingCardboard.html](http://www.recyclingexpert.co.uk/RecyclingCardboard.html)

### Clothing

There are numerous Scope and Salvation Army banks at recycling centres around the district and also charity shops on many high streets. Charities are looking for clothes and shoes that are suitable for re-sale, either in the shops or that they can sell overseas to raise funds. The money raised can then be used to support their work.



It is thought that nearly 2 million tonnes of new clothing is bought every year, but that only around a fifth of that is recycled. Please take only clothes and shoes that are suitable for re-sale to charity banks or shops, it is a good idea to tie shoes together so that they don't get separated and use bags to keep items clean.

Charity banks and shops are among the best ways to recycle, as well as keeping the amount of waste down; they also provide an excellent service to bargain hunters, so why not take a look next time you are in town. You could save a pound or two as well as saving the planet. If you have any concerns about any organisation collecting second hand clothing or goods for re-sale you should contact Consumer Direct on 08454 04 05 06, or the Charity Commission on 0845 300 0218.

*Improving the Quality of Life in South Lakeland*

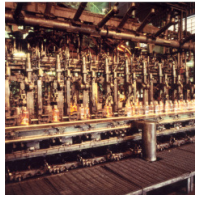
# NEIGHBOURHOOD SERVICES

## Your Waste and Recycling



### Glass

We ask that glass bottles and jars be rinsed; this helps keep your recycling box clean and reduces the level of contamination that needs dealing with during the recycling process. After collection the glass is taken to depots in Barrow, Kendal or Endmoor for bulking before being taken to the reprocessing plant. The glass can then be crushed to form a material called cullet, which is then mixed with sand, soda ash and limestone in a batch house prior to going to a furnace to produce new glass.



A typical furnace will produce around 300 tonnes of glass a day and will operate 24 hours a day for approximately 10 years. Glass is very easy to recycle and the materials can be recycled continuously. There are also a variety of ways that recycled glass can be used, not just to make new bottles and jars. It can be used in road surfacing for example, or as a component in the manufacture of kitchen worktops and garden ornaments.

If you would like more information about recycling glass there is a website for the industry at [www.britglass.org.uk/Education/Recycling.html](http://www.britglass.org.uk/Education/Recycling.html)

### Green Garden Waste

Over recent years we have distributed over 17,000 compost bins in the district, and these are an excellent way to use your garden waste to best effect. If you don't already have a compost bin and would like more information about using one or buying one at a reduced price visit our website or telephone 0845 077 0757.

We also provide a green garden waste collection service throughout South Lakeland, using green wheelie bins for grass cuttings, leaves, hedge cuttings etc.

The green waste is taken by wagon to sites in Kendal and Barrow where it is composted in piles called windrows. These piles are turned periodically to introduce air into the mixture. During the composting process the temperature of the waste can reach up to 80 degrees centigrade. The composting process used is suitable for the types of green waste we collect, but cannot be used to compost food waste.



The compost used is supplied to local farmers and also used in land reclamation. One of the contractors, SITA, also sell to the public from the Household Waste Recycling Centre in Carnforth, unfortunately there are no facilities for sales to be made in South Lakeland.

### Paper

As with all the materials the guidelines we have in place are determined by the end-users of the recyclables and their requirements. Paper needs to be kept as clean and dry as possible and separate from other waste. After your paper box is emptied the paper is taken to a local Transfer Station, in either Kendal or Barrow. From there it is taken to the paper mill for processing.

At the mill the paper is put into a hydropulper, where it is mixed with water to break down the fibres. It is then cleaned and any contaminants, such as staples, are removed. The resulting pulp is then dried and ready to be used in the manufacture of new paper products.

*Improving the Quality of Life in South Lakeland*

# NEIGHBOURHOOD SERVICES

## Your Waste and Recycling



Most of the paper we collect is used for newsprint, which has a high specification, or the manufacture of household paper products such as tissue paper and kitchen roll.

If you would like more information about recycling paper there is a website for the industry at [www.paper.org.uk/info/recycling.htm](http://www.paper.org.uk/info/recycling.htm)

## Plastic

The plastic recycling service in South Lakeland is provided in partnership with Barrow Borough Council. There are over 50 types of plastic in everyday use; our banks do not restrict the types of plastic that we collect.







The full banks are collected and taken by our contractor to Barrow, where the materials are sorted for supply to processors. The plastics may require further sorting by the processor, which may be done automatically, for example by x-ray machine. The sorted plastics can then be recycled, which can be done by melting, shredding or granulating the materials ready for manufacture into new products.



There are many uses for recycled plastic, for example as clothing, garden furniture, pipes and tubes, water butts, plastic bags, compost bins, and of course recycling boxes such as those we use to collect your paper, glass and cans from the kerbside.

More information about plastic recycling is available at [www.wasteonline.org.uk](http://www.wasteonline.org.uk)

The main types of plastic are:

-  **PET** **Polyethylene terephthalate** - Fizzy drink bottles and oven-ready meal trays
-  **HDPE** **High-density polyethylene** – Milk and washing-up liquid bottles.
-  **PVC** **Polyvinyl chloride** – Cling film, food trays and bottles for squash, mineral water and shampoo
-  **LDPE** **Low density polyethylene** - Bags and bin liners.
-  **PP** **Polypropylene** - Margarine tubs, microwave meal trays.
-  **PS** **Polystyrene** - Food trays, hamburger boxes and egg cartons. We are unable to collect polystyrene in our plastic banks.

## Landfill Waste

Remember everything you do not recycle is sent to landfill sites in Barrow and Blackpool.

*Improving the Quality of Life in South Lakeland*