

Asbestos Management Plan 2005

Safe System Of Work

[All Contractors, Trades & Building Workers must follow these instructions](#)



All contractors must consult Property Services/Design Services before the commencement of any work or activity affecting materials that may contain asbestos.

Such activities include work carried out by:

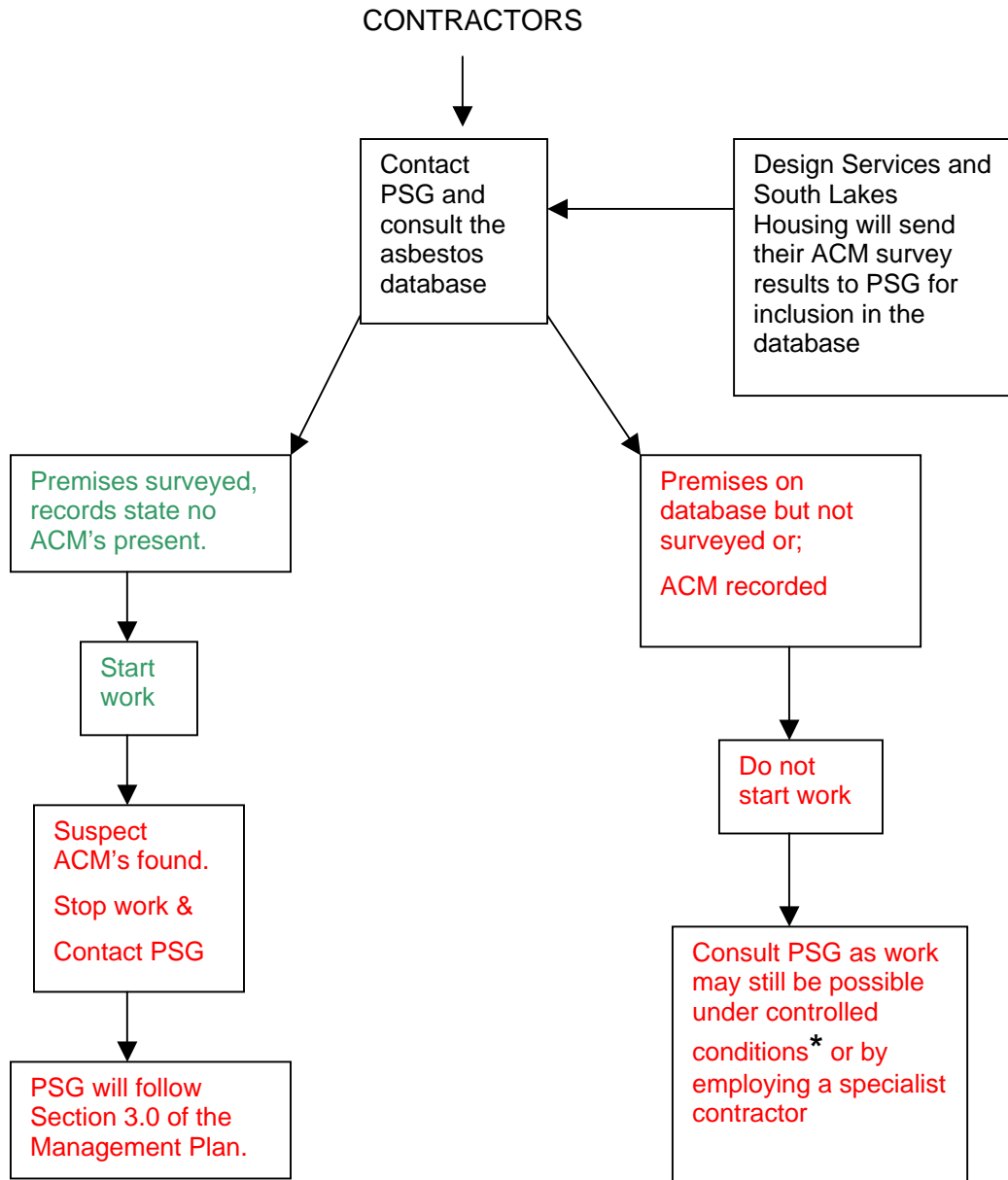
- **Electricians**
- **Plumbers**
- **Joiners**
- **Heating & ventilating engineers**
- **Telecommunications engineers**
- **Fire, burglar alarm installers**
- **Computer installers**
- **Painters & decorators**
- **Gas fitters**
- **Builders**
- **Plasterers**
- **Demolition contractors**
- **Roofing contractors**
- **Building surveyors**
- **Other trades and contractors**

Flowchart and information for contractors before starting any work or activity which may affect structural materials.

Glossary:

ACM = Asbestos Containing Materials

PSG = Property Services Group



* The following documents must be referred to and complied with.

1.0 Controlled conditions as per the task guidance sheets in the Asbestos Essentials Task Manual [Health & Safety Executive publication HSG210]

2.0 The Approved Code Of Practice

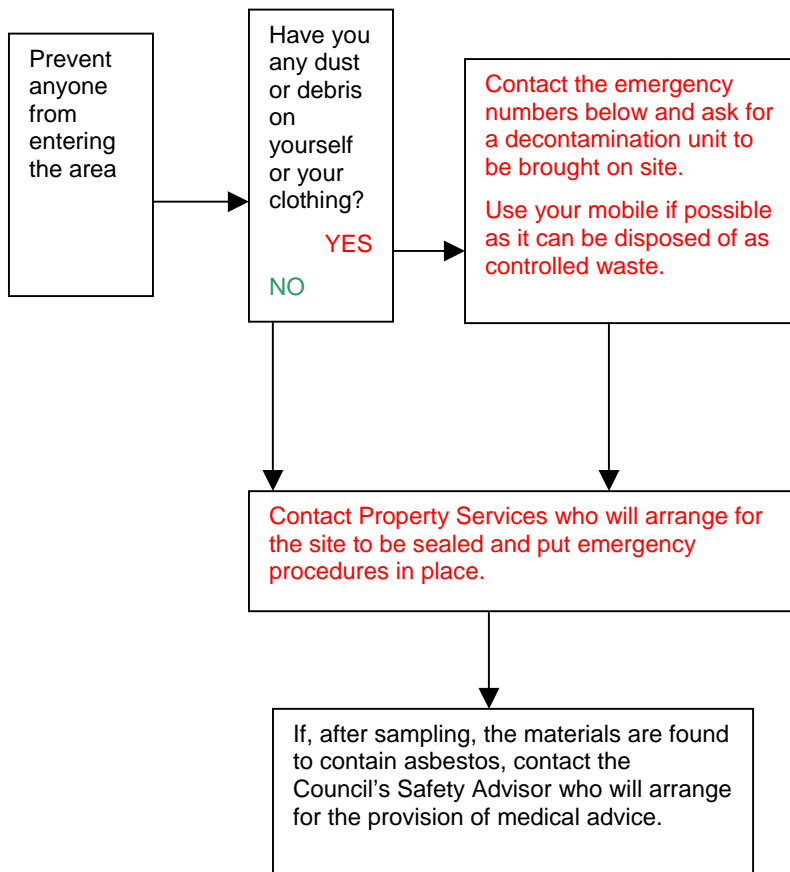
Work with asbestos which does not normally require a licence (Forth edition) Control of Asbestos at Work Regulations 2002

[Health & Safety Executive publication L27]

CONTRACTORS, TRADES & BUILDING WORKERS, PROPERTY SURVEYORS

IF YOU DISTURB SUSPECTED ASBESTOS CONTAINING MATERIALS YOU MUST:

STOP WORK IMMEDIATELY AND:



Emergency phone numbers for the provision of a mobile decontamination unit:

- Asbestos and Air Management Services Ltd. Tel' 01539 740816/724703

Mobile 07732 733440

-

S.L.D.C. Out of hours emergency phone number: Tel' 0870 4286905 ask for the duty Property Services Surveyor

Safety Advisor: Tel' 01539 733333 ext' 7406