

First Review March 2006
(Effective from 1 June 2006)

Local Development Scheme



Contents

Section	Title	Page
	Preface by Cllr Bob Barker, Transport and Development Portfolio Holder	2
	Glossary of Abbreviations	3
1	Introduction	5
	- Diagram 1 - Local Development Framework	6
	- Diagram 1a - Chain of conformity with other spatial strategies and policy guidance	7
2	Project Plan Issues	9
	- Decision Making	9
	- Current Policy Status	9
	- Other Key Strategies	10
	- Timescale	10
	- Diagram 2 - Key Milestones for DPD's	11
	- Diagram 2a - Milestones for SPD's	12
	- Diagram 2b - LDS Research	13
	- Project Risks	14
3	Requirements of the Local Development Scheme	16
	- Main Issues Facing the District	16
	- An Initial Profile	16
4	Local Development Documents	18
	- Diagram 3 - Development Plan Documents	18
	- Diagram 4 - Supplementary Planning Documents	19
5	Schedule of Proposed Local Development Framework Documents	20
	- Statement of Community Involvement	20
	- Core Strategy	22
	- Generic Development Control Policies	24
	- Site Specific Allocations of Land	26
	- Proposals Map	28
	Supplementary Planning Documents:-	
	- Design	29
	- Amenity	30
	- Conservation	31
	- Wind Energy	32
	- Landscape	33
6	Research Requirements for the Process	34
7	Monitoring, Review and Community Feedback	40
Appendix 1	Resource Allocations to the Local Development Framework	42
Appendix 2	Possible Issues for Consideration as Action Area Plans	44

Preface

Preface

The Government has decided that the Local Planning System for England and Wales must be changed to make it faster and more responsive to community needs.

The Planning and Compulsory Purchase Act 2004 set out changes to the way that all Local Planning Authorities must develop and publish policy for their area.

The key changes are designed to make the process simpler for communities to understand and to take part. It is also intended that the new documents produced will be more flexible and capable of being updated more rapidly in response to change.

The new Local Plan process will be called a **Local Development Framework (LDF)**.

This Local Development Scheme (LDS) sets out to explain how South Lakeland District Council will go about producing the Local Development Framework for our area.

This document forms the Council's first review of the LDS following the endorsement of the original version submitted to the Secretary of State in March 2005. It has been necessary to revise the document following the preparation of the Council's Annual Monitoring Report (AMR) in December 2005.

- The LDS describes the range of documents that will be produced and their status
- How they will relate to the South Lakes area and their content
- The timescale for their production and adoption as part of the framework
- The frequency with which they will be reviewed

I hope that you find the document easy to read and understand and if you have any questions having read the document you take the opportunity to raise them with us.

Cllr Bob Barker

Transportation & Development Portfolio Holder



Glossary of Abbreviations

Glossary of Abbreviations

Abbreviation	Definition
AMR	Annual Monitoring Report
DPD	Development Plan Document - a planning document that is subject to an independent examination
GONW	Government Office for the North West
LDD	Local Development Document
LDS	Local Development Scheme
LSP	Local Strategic Partnership
LTP	Local Transport Plan
ODPM	Office of the Deputy Prime Minister
PDG	Planning Delivery Grant
PINS	Planning Inspectorate
PPG	Planning Policy Statement
RPB	Regional Planning Body
RPG	Regional Planning Guidance for the Northwest
RSS	Regional Spatial Strategy
SCI	Statement of Community Involvement
SEA/SA	Strategic Environmental Assessment/Sustainability Appraisal
SPD	Supplementary Planning Document - a planning document that is supplementary to a DPD relating to a specified topic, site or issue for example. The document is not subject to independent examination but should have clear links to a parent DPD.

Introduction

1.0 Introduction

1.1 This document has been prepared as the Council's **Local Development Scheme (LDS)** under the regulations published through the Planning & Compulsory Purchase Act which commenced in September 2004.

1.2 The document sets out the nature of the Local Development Framework which can best be described as a folder of planning strategies, policies, proposals and guidance which encompass the Council's core planning policy work for the next 3 years and beyond. The LDF is required to have a ten year time horizon.

1.3 **Diagram 1** sets out the relationships between the various Local Development Documents (LDD) in the folder.

1.4 **Diagram 1a** sets out the relationship between the Local Development Framework and other strategies and guidance. It indicates the chain of conformity which must exist from Government targets through NWRA Regional Spatial Strategies and the County Structure Plan leading to the LDF.

1.5 Within the Local Development Framework the content will be divided into:

- **Development Plan Documents (DPD)**
These will include the Spatial Strategy for the district and Core policies, together with Topic policies which will support and explain the proposals map. DPD's will also include Action Area plans where detailed proposals may be required for a geographic area or a large single issue requiring management or resolution.
- **Supplementary Planning Documents (SPD's)** which will be produced to manage issues where rapid change is likely, or where the nature of the guidance doesn't require the full rigor of Development Plan Document status.

1.6 All Local Development Documents will be subject to a process of engagement and consultation with the community. Similarly they will all be required to demonstrate a clear process of Strategic Environmental Assessment and Sustainability Appraisal as part of their development. These requirements set out in UK and European statutes will ensure that the plan develops a robust

commitment to environmental management and sustainable development throughout the policy framework.

1.7 By contrast only Development Plan Documents will be subject to a rigorous examination in public before adoption.

1.8 The Council's first LDS was submitted to the Secretary of State for endorsement in March 2005 and subsequently became effective in June 2005. The Council has also been required to prepare an Annual Monitoring Report (AMR) to comment on the progress in preparing the LDF and the requirement for further evidence. Following preparation of the first AMR in December 2005, a re-evaluation of the scope and timetable for the LDF has been undertaken.

1.9 The first year of LDF preparation has highlighted overstretched staff resources within the Council to undertake the LDF exercise and an under estimation of the timescale associated with the Sustainability Appraisal/Strategic Environmental Assessment requirements. Consequently, this document forms the first review of the LDS and incorporates an extended preparation timetable for the main DPD's and a prioritisation of their preparation in the period to 2009 (see Diagrams 2, 2a, 2b).

1.10 The availability of the Local Development Scheme and all Local Development Framework documents will be published locally.

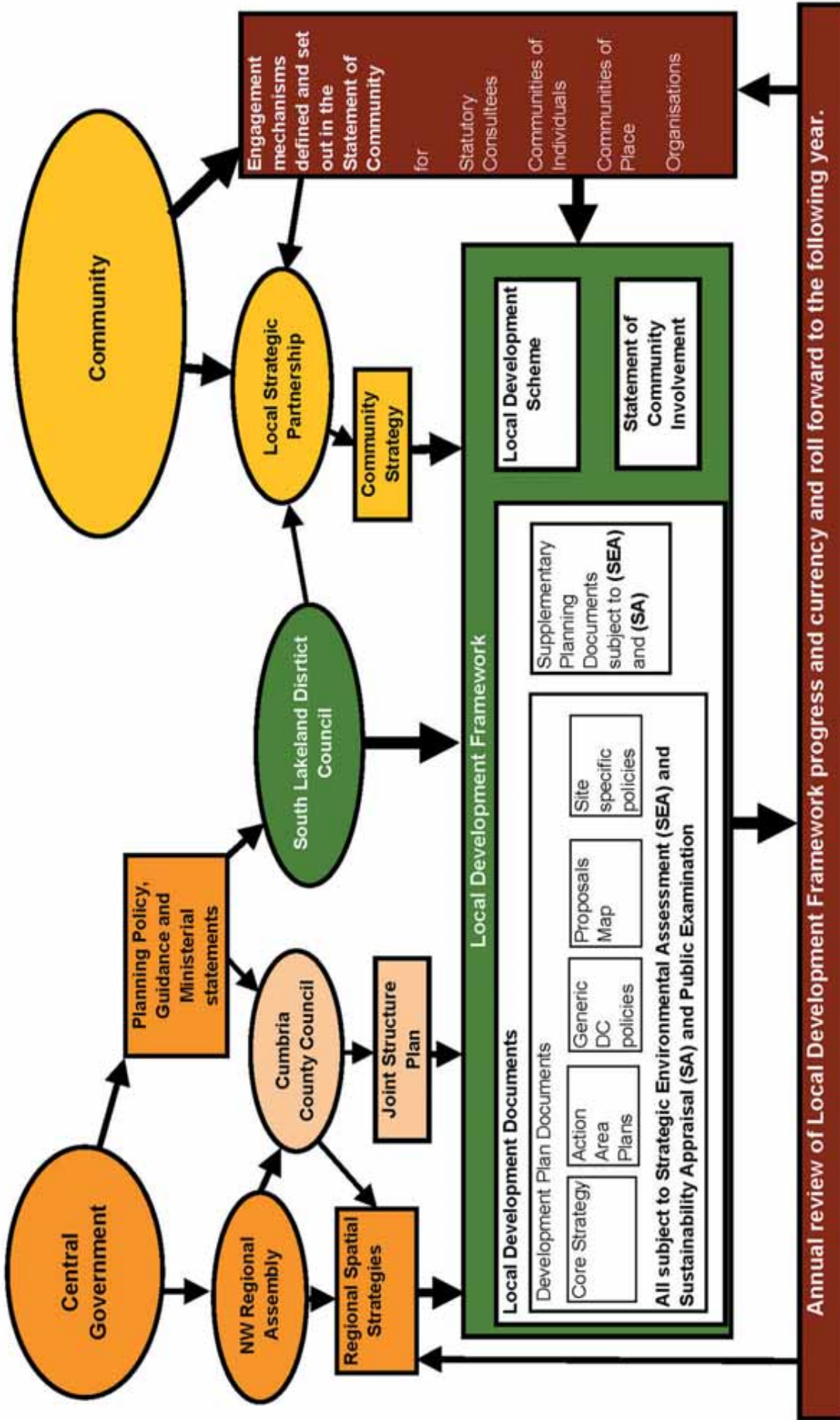
Copies of the documents will be available from the Council's offices in Kendal and Ulverston and from Planning Surgeries in Grange, Arnsdale and Kirkby Lonsdale, and it will be made available on the Council's website at www.southlakeland.gov.uk.



Introduction (cont.)

Diagram 1a

Chain of Conformity with other spatial strategies and policy guidance



Introduction (cont.)

1

Project Plan Issues

2.0 Explanation of the Project Plan Issues

2.1 The first Local Development Framework will be produced over the period up to September 2009.

- During this period the Council will complete its Statement of Community Involvement and implement its provision for Community engagement in the preparation of DPD's.
- It will seek to develop a core strategy which will be customised to meet the needs of SLDC but will be informed by the relevant principals of the strategy set out in the Cumbria Structure Plan examined in public during September and October 2004.
- Develop a suite of generic development control policies to guide development to meet the Core Strategy, with work starting on associated SPD's.
- Undertake work to produce policies leading to the allocation of sites in a proposals map for Housing, Employment and important open space within the district.

2.2 Existing policies within the current South Lakeland Local Plan will be 'saved' on an interim basis until that topic is brought forward for review as part of the LDF.

2.3 During its preparation time the Council will rely on the Planning Services Group to be the lead agency in producing the LDF documents indicated and will contribute and seek support from the Economy & Development, Culture and Tourism & Housing Strategy Groups as necessary on particular topics.

Appendix One sets out the current resource available and the initial budget for 2004/05 and 2005/06.

2.4 Decision Making: The Council's constitution requires all decisions creating new policy to be determined by Full Council. Ultimately all documents produced to form part of the Local Development Framework will therefore be agreed by Full Council before adoption procedures are put in place. The LDS itself has been approved by Cabinet.

2.5 Since the timescale for the production of the Local Development Framework is very restricted by the Government the Council has set up a small Member Advisory Group to support the Transport and Development Portfolio Holder and the Assistant Director Development (ADD) who has responsibility for this area of work. They will assist the Portfolio Holder and ADD in discharging the enhanced delegated powers conferred on this post by Cabinet.

2.6 The group contains a single representative from each of the political groupings within the Council and will advise the Portfolio Holder who will remain the decision maker. All decisions will be subject to ratification by Full Council before they become Council policy.

2.7 In addition, the Leader of Council has set up a 'leader panel' on politically representative lines to provide guidance on issues of community leadership. The leaders panel which consists of six experienced members will concentrate on issues emerging from the Council's Community Engagement agenda which forms part of its Comprehensive Performance Appraisal improvement programme. They will champion the role of members within their communities as routes of communication to the Council for citizens and will help to focus the debate on Community leadership within the Council.

2.8 Current Policy Status: The South Lakeland Local Plan was adopted in September 1997. Alteration to the Local Plan was approved in May 2004, and published in a document entitled 'Composite Plan' (March 2004). The Notice of Adoption for the Alteration was published on 17 March 2006. The plan, as altered, will be saved for 3 years from the final adoption of the Alteration - April 2006 to April 2009.

2.9 It is anticipated that a number of policy areas will develop from the current local plan and the emerging County Structure Plan into a new Development Plan document forming part of the core strategy. This process is also expected to apply to several Supplementary Planning Guidance (SPG's) documents currently being considered. These will need to be revised and reproduced as Supplementary Planning Documents (SPD's) observing the new consultation and SA procedural requirements as part of the Local Development Framework.



Project Plan Issues (cont.)

2.10 The current program for production of the Core Strategy and Generic Development Control policies DPD's indicates that these will be completed in 2009 depending on the scheduling of public examinations by PINS. It will be incumbent on the Council to save the current local plan strategy and policy framework until the LDF documents can replace them. As part of the preparation of the Council's next AMR in December 2006 it will be preparing a schedule of saved Local Plan policies to both monitor their performance against Core Output Indicators but also to give an indication of their status and relevance. Some Local Plan policies may be saved to the new DPD's, others amended or alternatively replaced.

2.11 Other Key Strategies: The Local Development Framework will be formed against a background of other key documents with which it must conform. These include:

- Regional Guidance for the North West, published in 2002 and reviewed annually, which was adopted in March 2003.

This strategy has effectively become the Regional Spatial Strategy for the North West and sets the overall policy context and with the Regional Economic Strategy sets targets for employment and housing growth within the Northwest which have implications for the District.

- Cumbria & Lake District Joint Structure Plan 2001 - 2016 Modifications published in September 2005 which provides a Spatial Strategy for the District and applies North West regional targets at a District level. This plan will be saved for 3 years from its adoption whilst new planning mechanisms are introduced. It will contribute its strategic vision to the formulation of the Regional Spatial Strategy. It underwent Examination in Public during Sept/Oct 2004. It is intended to adapt the strategic elements to heavily influence the South Lakeland Core Strategy for the LDF.
- Community Strategy produced in April 2004 by the South Lakeland Local Strategic Partnership it will contribute its vision to the new Local Development Framework which must adopt this as its key starting point in delivering the spatial elements of this community led plan.
- Neighbouring authority plans

South Lakes is unusual in having two National Parks within its boundary where Local Development Frameworks will be produced independently.

Ensuring a good fit between the policies and strategies which cover these areas with the Council's own Local Development Framework may call for joint working arrangements that have not previously been envisaged. Similar issues affecting the Area of Outstanding Natural Beauty shared with Lancaster to the south may also be considered. The Council is already engaged in negotiations with Barrow and Lancaster District Councils and with Cumbria County Council to prepare the way for joint commissioning of employment, retail and housing studies to inform the options and policy development stages.

- Other South Lakes Strategies

The Council has recently published an Economic Development Strategy and a Cultural Strategy which will influence topic policies for the Local Development Framework. Similarly the Council's Housing Strategy rely on a Housing Needs Survey undertaken in 2002 which provides good data for housing topic policies. Maintaining the currency of this survey will be critical.

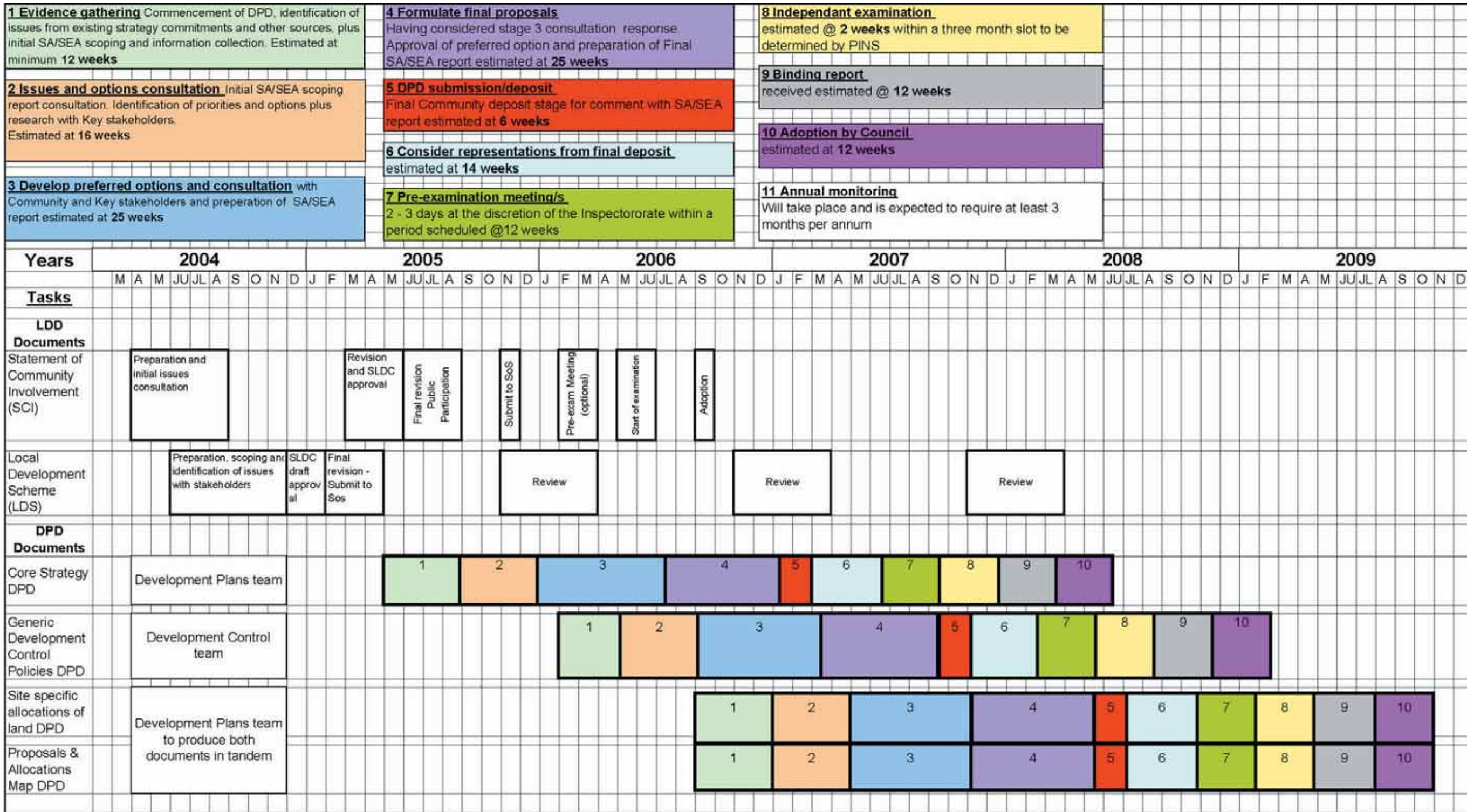
2.12 Timescale: The Council has an initial period set out in this LDS within which to produce the first version of the Development Framework. This Plan will establish a Core Strategy, new generic development control policies and a range of spatial allocations for priority issues. Elements of the planning context not addressed by the LDS will be identified in subsequent review phases to build a comprehensive LDF portfolio. The Local Development Scheme and the companion draft Statement of Community Involvement are the first elements of the process and define the starting point.

Diagram 2 sets out the broad timescale which envisages the completion of the Core Strategy by followed with Generic DC policies and a proposals map. During this period the Council will undertake annual reviews of its performance against this timescale. The first Annual Monitoring Report was published in December 2005, and will be issued annually thereafter.



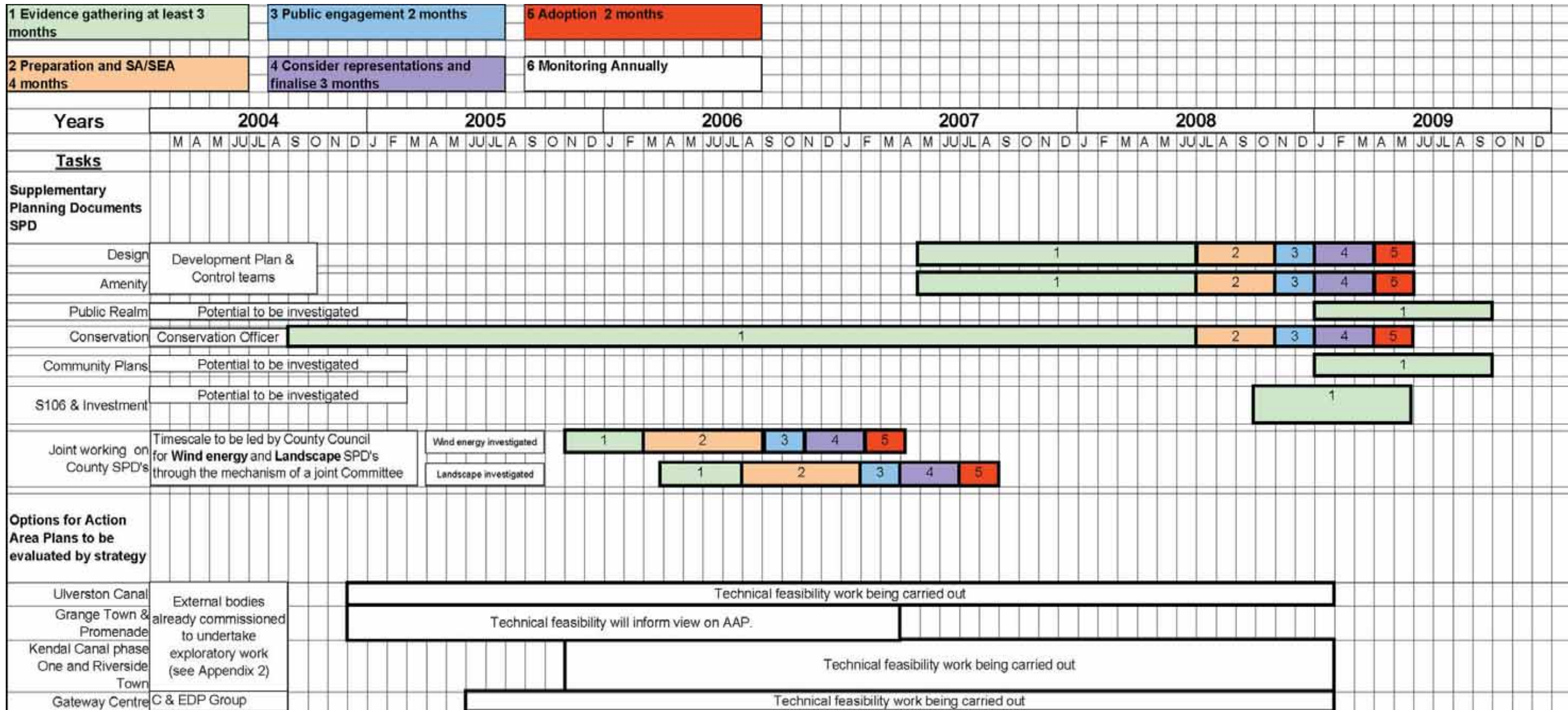
Project Plan Issues (cont.)

Diagram 2
Key Milestones for DPD's



Project Plan Issues (cont.)

Diagram 2a
Milestones for SPD's



Project Plan Issues (cont.)

Diagram 2b
Research

Years	2004												2005												2006												2007												2008																																																											
	M	A	M	J	J	A	S	O	N	D	J	F	M	A	M	J	J	A	S	O	N	D	J	F	M	A	M	J	J	A	S	O	N	D	J	F	M	A	M	J	J	A	S	O	N	D																																																														
Tasks																																																																																																												
Research																																																																																																												
Urban Capacity													Research						Submit																																																																																									
Retail need & impact																																																													Commission and research												Report back & consultation																																			
Employment need and Land search																																																													Community engagement, commission and needs assessment												Report back & consultation																																			
Affordable & Local Housing need	Existing 2002 survey still current																																																																								Commission and needs assessment												Report back & consultation												Housing Strategy to consider new survey											
Flood risk																																																																									Joint project evaluation						Research and report																													
Open Space																																																													Internal Pitch/facility needs assessment - evaluate by parish																																															

Project Plan Issues (cont.)

2.13 Project Risks

Risk	Impact	Likelihood	Response
① Prioritisation of the project by Members and Senior Managers in the light of the necessary investment and capacity building likely to be required to tackle the Council's score of "weak" in the previous Comprehensive Performance Assessment (CPA).	Serious	Unlikely	Seek to establish the importance of a pro-active Local Development Framework process in the minds of Members and Senior Managers as part of delivering real Comprehensive Performance Assessment improvements.
② Loss of capacity within Council to deliver high level commitment and resources associated with Job Evaluation Budgeting issues.	Catastrophic	Moderate	Focussed use of Planning Development Grant resource to supplement budgetary shortfalls.
③ Staff turnover and difficulties encountered in recruiting Planning Officers with requisite experience.	Serious	High	Council has completed a job evaluation exercise which has been implemented reviewing the salary grades of posts and should consider other internal resources and partnership working.
④ Consultation and fatigue on the behalf of the community who are being asked to engage in multiple exercises by many authorities and agencies.	Serious	High	Ensure that coordination of initiatives undertaken through community engagement task force using existing surveys. Utilise contacts with representative groups already established. Encourage contact with groups who might otherwise be beyond the normal consultation framework and therefore still likely to welcome involvement. Use professional advice and facilitation.
⑤ Legal challenges to key high profile issues including: Housing, Affordability and Local Occupancy	Serious	Moderate	Ensure that Counsel's opinion is available on high profile issues and that if the Council are intending to pursue a controversial policy there is very clear local support for the outcomes. Maintain close links with GONW to ensure that best practice advice is available.

Impact Catastrophic/Serious/Moderate/Negligible **Likelihood** High/Moderate/Unlikely

2

Project Plan Issues (cont.)

Risk	Impact	Likelihood	Response
⑥ Scale of the response at the consultation and examination stages.	Serious	High	Resource management and IT solutions. Introduction of Document Management. Identification of key representatives to address issues.
⑦ Workload associated with the rapid pace of the Local Development Framework process and the need for constant review.	Serious	High	Resource management and review. Requirement to set realistic timescales for LDD delivery. Pursue internal growth bid for additional staff.
⑧ Difficulty in ensuring Planning Services involvement with Local Strategic Partnership and CS process.	Moderate	Unlikely	Culture change within Local Strategic Partnership and LA to reflect the importance of the Local Development Framework.
⑨ Finding capacity to deal with increasing demands of SA/SEA process and convincing partners of its value.	Serious	High	Establishment of a Lead Officer within the DPT and the formation of a SA Panel involving outside interests.

Impact Catastrophic/Serious/Moderate/Negligible **Likelihood** High/Moderate/Unlikely

2.14 Risk Management Matrix

Likelihood	Impact →			
	Negligible	Moderate	Serious	Catastrophic
High ↑			③ ④ ⑥ ⑦ ⑨	
Moderate			⑤	②
Unlikely		⑧	①	

2

Requirements of the Local Development Scheme

3.0 Requirements of the Local Development Scheme

3.1 The guidance published to date makes the purpose of the Local Development Scheme clear. It is to form the project plan for the Local Development Framework and to enable the Council's progress along this path to be monitored and measured.

3.2 Whilst there appear to be no formal requirement for consultation on the Local Development Scheme before it is considered by the Office of the Deputy Prime Minister. South Lakeland District Council has presented options for consideration in terms of the detailed Local Development Documents to be produced. The outcome of Consultation is set out in Section 5.

3.3 The Local Development Scheme in outlining the documents to be produced within the Local Development Framework must ensure that the following points are covered:

- The status of all Local Development Documents (LDD)
- The subject matter and geographical extent of each Local Development Document
- Which Local Development Documents will be Development Plan Documents.
- Whether a Local Development Document is to be prepared in conjunction with one or more Local Planning Authorities
- Any matters or areas where the Local Planning Authority propose to set up a Joint Committee with another Local Planning Authority to progress matters.
- A timetable and milestone for the preparation, adoption and review of all Local Development Documents.

3.4 Main Issues Facing the District

The draft statement of Community Involvement has already set out a profile for the District which draws out simple key themes which represent descriptions of both problems and assets characterising the district. Those themes are repeated in paragraph 3.6 below

and the Council is interested to investigate the match between the preliminary comments set out in this document and those held to be important by the community as a whole.

3.5 The Local Development Framework will concentrate on the formal attributes of spatial planning in respect of the economy, housing, retail business, leisure, the environment and transport but will seek to do so prioritised by the particular significances of the area's current situation.

This Local Development Scheme represents an opportunity to design the template of the Local Development Framework to fit the particular opportunities and problems facing all of us.

3.6 An Initial Profile

The common picture painted by commentators and agencies of South Lakeland is of a rural community divided by income and age.

An older (often retired) and in part more affluent group of the population are able to enjoy the benefits of a high quality environment on the edge of the Lake District with access to market towns in Ulverston and Kendal delivering high quality services. A significant element of this group are not disadvantaged by poor public transport due to high car ownership levels. In contrast the younger predominantly local indigenous workforce are struggling in a low wage economy dominated by tourism, employment and service industries, facing high housing costs, poor access to rented and discounted housing schemes and often disadvantaged by poor public transport facilities. These same infrastructure problems have even greater impact on that part of the Community which is elderly and on lower fixed incomes.

The figures for the 2001 census bear out many of the elements of this picture and it will be part of the role of the Statements of Community Involvement to examine with communities the real issues of the differing perspectives which exist.

It is not difficult to predict that for those who have "comfortably retired to South Lakeland" the agenda for involvement will focus on the protection of amenity and the environment across the district, coupled with the



Requirements of the Local Development Scheme (cont.)

development of services and access to health care in communities around the bay and in major population centres.

For the young the ability to find work which allows them to compete for housing within the normal market may be a priority with an option of subsidised access to housing as a high priority second alternative.

Those in stable employment within the District will be keen to seek a diverse range of opportunities for employment together with housing prioritised to meet local housing needs.

For the elderly with low or fixed incomes, access to reliable public transport, good local services and a prioritisation on health care facilities is of high interest.

Within the rural community the fundamental changes that have hit farming have prompted a significant exodus from the smaller hill farms which has been predominant across the District and caused an erosion of rural services. During the 1990s farm conversions helped to contribute to the over rapid growth of housing within the district fuelled by farm enterprises where farming families sought to leave the industry. Foot and Mouth in 2002 added urgency to this picture. For these communities viable alternative business models that enable landscape stewardship to continue may be the major issue coupled with practical alternatives for the redundant stock of farm buildings which are now increasingly difficult to convert to profitable alternative uses.

Poor access to rural services with a declining public transport base may also be a high priority for this community.

For those living and working within major population centres in Kendal, Grange and Ulverston, competition with "in migration" from persons wanting to live or work close to the Lake District but who lack the ability to relocate within the National Park may be the challenge.

This will undoubtedly be coupled with the demands placed on towns and villages to capitalise on tourism with the loss of local "bread and butter" services converting to tourism related enterprises which may be perceived as having a better return.

Many within the commerce sector reflecting the tourism industry will seek to emphasise and promote policies which protect the unspoilt quality of the district's environment and its proximity to the Lake District and the Dales whilst retaining the benefits of a cost effective local labour force. These aims will be in conflict with those who seek to harness the potential of the district's naturally windy uplands for renewable energy projects.

None of these "snapshots" alone encapsulate the diversity of the challenges facing the Council in formulating a Local Development Framework

Key issues which emerge from the Community Strategy and the Council's Corporate Plan include:-

- The prioritisation of the restricted supply of housing permissions to meet the needs of locals in housing need.
- The development of a strategy for housing and employment investment which guides development to the most sustainable locations in areas where need is greatest.
- The management of rural investment to maximise the benefits of existing transport infrastructure.
- The use of development permissions as a catalyst to stimulate and promote investment in rural public transport.
- The development of policies which enable the best of the district's high quality environment to be protected whilst avoiding the discouragement of employment growth and investment.

The full range of issues likely to be tackled by the Local Development Framework will emerge from local community engagement and stakeholder analysis during the Framework process.

The Community Strategy and the Corporate Plan provide a starting point for the prioritisation of resources towards specific development plan documents at this stage. The continuation of engagement together with the annual review will establish a more comprehensive program.



Local Development Documents

4.0 Local Development Documents

4.1 Development Plan Documents are subject to formal public examination and Supplementary Planning Documents are not. Both types of documents will be produced with community consultation and engagement as set out in the draft South Lakeland Statement of Community Involvement. www.southlakeland.gov.uk

4.2 The preparation of these two types of documents will differ slightly reflecting the significance of their status.

- Development Plan Documents which will include The Core Strategy, Generic Development Control Policies, Topic Policies and the Proposals and

Allocations Map together with Action Plans will be formulated following a generic process set out in Diagram 3 below.

The periods of each phase may vary depending on the complexity of the subject, but each document will reflect these components when published.

- Supplementary Planning Documents which will deal with issues likely to need more regular updating or change through existing circumstance will follow the process outlined in Diagram 4 (page 10).

The notional timescales are not necessarily sequential and may be able to run in parallel throughout the process.

Diagram 3 Development Plan Documents

Milestones	Stage	Typical Timescale	Cumulative
Evidence gathering. Commencement of DPD. Description of the issue. Review of existing strategy/policy context and links to other plans. Initial SA/SEA* scoping and information collection.	1	12 weeks	12
Issues and options (and SA/SEA* Scoping Report consultation) Establishment of community priorities either from known review or new engagement and research with key stakeholders.	2	16 weeks	28
Develop preferred options and public consultation identified by Stage 2. Identify SA/SEA* issues and outcomes for preferred option.	3	25 weeks	53
Consider representations from Stage 3 and formulate final proposal and obtain delegated authority to proceed. Consult/engage with appropriate statutory and community forums. Seek Statement of Conformity with Regional Spatial Strategy. Preparation of final SA/SEA* report.	4	25 weeks	78
DPD submission/deposit and final community deposit for consultation on final SA/SEA* report.	5	6 weeks	84
Consider representations from final deposit consultation.	6	14 weeks	98
Pre-examination meeting (discretion of Inspectorate) and preparation of case.	7	Pre-exam meeting 1-2 days within a 3 month period	110
Independent examination	8	Unknown allow 2-4 weeks with a 3 month period	122
Binding report received	9	Unknown allow 12 weeks	134
Adoption by Council	10	12 weeks	146
Annual Review	11	12 weeks	158

* SA = Sustainability Appraisal SEA = Strategic Environmental Appraisal

Local Development Documents (cont.)

4.3 Diagram 4 varies slightly in its procedures largely because issues for Supplementary Planning Documents will arise from Council decisions to follow the new procedures set out for SPD's published as part of the Local

Development Framework. It also reflects the fact that the public examination will be unnecessary for Supplementary Planning Documents.

Diagram 4 Supplementary Planning Documents

Action	Stage	Typical Timescale	Cumulative
Evidence gathering. Commencement of SPD. Description of the issue. Review of existing strategy/policy context and links to other plans.	1	12 weeks	12
Prepare draft SPD (and initial SA/SEA*).	2	16 weeks	28
Formulate proposals and undertake public engagement with appropriate statutory and community forums.	3	8 weeks	36
Consider representations and finalise	4	12 weeks	48
Adoption by Council	5	8 weeks	56
Annual Review	6	12 weeks	68

Schedule of proposed Local Development Framework Document

5.0 Schedule of proposed Local Development Framework Document

5.1 Statement of Community Involvement		
1	Title	Statement of Community Involvement
2	Status	Statutory part of the Local Development Framework
3	Geographical Area	South Lakeland District Council excluding the Lake District National Park Authority and the Yorkshire Dales National Park Authority
4	Description	The documents will set out the reasons why the Council will consult on Local Development Documents and the tools of engagement we will use to gather opinion and to test the acceptability of documents to the community. It also sets out the Councils commitment to consultation on development control matters.
5	Proposed content/elements	It will describe the timescales to be applied and what the Council considers the minimum requirements for engagement will be at each stage of the process. It will seek to establish a consensus of agreement on the communities of interest within the district and the means by which they may be involved in the Local Development Framework process. Finally it will set out the proposals which the Council proposes to put in place to develop the capacity of local and hard to reach communities, to engage with the Council.
6	Chain of conformity	N/a
7	Related documents	Local Development Scheme Community Strategy and Local Strategic Partnership Community engagement task force reports
8	Jointly produced with others	Production inhouse, but links with the National Parks and other local districts and with the Local Strategic Partnership will be pursued.
9	Requires joint working for implementation	Yes with the Community
10	Timetable	
	10.1 Commencement	April 2004 (actual)
	10.2 Start of public participation on draft statement	July 2005 (actual)
	10.3 Submission to the SoS	November 2005 (actual)
		(cont.)

5

Schedule of proposed Local Development Framework Document (cont.)

5.1 Statement of Community Involvement (cont.)		
	10.4 Pre-examination meeting (if required)	February 2006
	10.5 Start of the examination	May 2006
	10.6 Adoption and Publication	September 2006

Schedule of proposed Local Development Framework Document (cont.)

5.2 Core Strategy		
1	Title	Core Strategy
2	Status	Development Plan Document
3	Geographical Area	South Lakeland District Council excluding the Lake District National Park Authority and the Yorkshire Dales National Park Authority.
4	Description	The document will provide the core spatial strategy for the district for a ten year period
5	Proposed content/elements	<p>It will identify the vision for the area from the community strategy and integrate this with the targets identified by the Regional Spatial Strategy. It will draw heavily on the recently publicly examined Joint Structure plan and will adapt key themes from the Strategy which have already been tested against national and regional policy for the purposes of conformity. It will be adapted and modified to reflect the input of the LSP through the Community Strategy and local engagement with communities and stakeholders and will:</p> <ul style="list-style-type: none"> • Develop policies that express both the spatial emphasis and broad principals for development • Examine the divergent performance of East and West areas of the district for Housing, Employment and Commerce • Address the need from the Regional Spatial Strategy to focus on a key settlement policy to underpin a sustainable investment approach and identify Key Service Centres and Local Service Centres • Examine the consequences for rural and village communities identified as key settlements, Local Service Centres and those without this status • Establish a clear strategy for the management of landscape and cultural assets • Manage tourism development • Set out areas for Action Area Plans
6	Chain of conformity	Consistent with national planning policy and general conformity with RSS and Cumbria and Lake District JSP.
7	Related documents	<p>LSP Community Strategy</p> <ul style="list-style-type: none"> • South Lakeland District Council's Economic Development, Housing and Cultural Strategies
8	Jointly produced with others	Production inhouse but close liaison with LSP and the JSPA (cont.)

Schedule of proposed Local Development Framework Document (cont.)

5.2 Core Strategy (cont.)		
9	Requires joint working for implementation	No
10	Timetable	
	10.1 Commencement	May 2005 (actual)
	10.2 Issues & Options consultation	November 2005 (actual)
	10.3 Start of public participation on draft statement	June 2006
	10.4 Submission to the SoS	January 2007
	10.5 Pre-examination meeting (if required)	August 2007
	10.6 Start of the examination	November 2007
	10.7 Adoption and Publication	June 2008

Schedule of proposed Local Development Framework Document (cont.)

5.3 Generic Development Control Policies		
1	Title	Generic Development Control Policies
2	Status	Development Plan Document
3	Geographical Area	South Lakeland District Council excluding the Lake District National Park Authority and the Yorkshire Dales National Park Authority.
4	Description	The document will provide a suite of generic development control policies which will underpin the assessment of planning applications within the district.
5	Proposed content/elements	<p>The policy areas listed below are intended to be formulated as criteria based policies which will wherever possible be explicit to aid the clarity of application.</p> <p>Design linked to an SPD covering:</p> <ul style="list-style-type: none"> • Materials • Space & Setting around buildings • Character • Scale • Quality • Conservation <p>Amenity</p> <ul style="list-style-type: none"> • Criteria defining impact on living conditions linked to SPD <p>Public Realm</p> <ul style="list-style-type: none"> • Protection and definition of important public open space • Cultural Identity <p>Economy</p> <ul style="list-style-type: none"> • Loss of space (retail and employment) • Loss of services • Mixed uses <p>Access, Servicing and Parking</p> <p>Equality and Diversity</p> <p>Accessibility with criteria covering</p> <ul style="list-style-type: none"> • Public Transport • Cycling • Footways • Travel Plans <p>Community</p> <ul style="list-style-type: none"> • Section 106 and other obligations including % for art associated with development <p>Nature Conservation</p> <p style="text-align: right;">(cont.)</p>

Schedule of proposed Local Development Framework Document (cont.)

5.3 Generic Development Control Policies (cont.)		
		Use of sustainable materials Conservation & Heritage linked to SPD covering: <ul style="list-style-type: none"> • Conservation Areas Appraisal • Listed Buildings • Buildings at Risk • Archaeology
6	Chain of conformity	Consistent with national planning policy and general conformity with RSS and Cumbria and Lake District JSP.
7	Related documents	LDF Core Strategy
8	Jointly produced with others	Production inhouse with major input from DCT. Many policies will require partnership working to deliver including Cumbria County Council, CWT, VAC & BRE.
9	Requires joint working for implementation	No
10	Timetable	
	10.1 Likely Commencement	February 2006 (actual)
	10.2 Issues and Options consultation	August 2006
	10.3 Start of public participation on preferred options	February 2007
	10.4 Submission to the SoS	October 2007
	10.5 Pre-examination meeting	April 2008
	10.6 Start of the examination	July 2008
	10.6 Adoption and Publication	January 2009

Schedule of proposed Local Development Framework Document (cont.)

5.4 Site Specific Allocations of Land (cont.)		
	10.2 Issues and Options consultation	April 2007
	10.3 Start of public participation on preferred options	October 2007
	10.4 Submission to the SoS	June 2008
	10.5 Pre-examination meeting	December 2008
	10.6 Start of the examination	March 2009
	10.6 Adoption and Publication	October 2009

Schedule of proposed Local Development Framework Document (cont.)

5.5 Proposals Map		
1	Title	Proposals Map
2	Status	Development Plan Document
3	Geographical Area	South Lakeland District Council excluding the Lake District National Park Authority and the Yorkshire Dales National Park Authority.
4	Description	An Ordnance Survey based map setting out physical proposals associated with the Local Development Framework process and key constraint issues.
5	Proposed content/elements	Map illustrated site allocations
6	Chain of conformity	Consistent with national planning policy and general conformity with RSS and Cumbria and Lake District JSP.
7	Related documents	LDF Core Strategy LDF site specific allocations of land Economic Development Strategy Housing Needs Strategy
8	Jointly produced with others	Production inhouse
9	Requires joint working for implementation	No
10	Timetable	
	10.1 Likely Commencement	September 2006
	10.2 Issues and Options consultation	April 2007
	10.3 Start of public participation on preferred options	October 2007
	10.4 Submission to the SoS	June 2008
	10.5 Pre-examination meeting	December 2008
	10.6 Start of the examination	March 2009
	10.7 Adoption and Publication	October 2009

Schedule of proposed Local Development Framework Document (cont.)

5.6a Design		
1	Title	Design
2	Status	Supplementary Planning Document
3	Geographical Area	South Lakeland LDF area
4	Description	Generic or area based guidance and advice on design issues within the district, including an update of the Shopfront Design Toolkit.
5	Proposed content/elements	Design material, space and setting, character, scale, quality, crime and conservation incorporating an excellence in Development award scheme. An update and republication of the recently published Shopfront Design Toolkit SPG (2004) complying with the new procedural requirements of SPD's.
6	Chain of conformity	Consistent with national planning policy and general conformity with RSS, Cumbria and Lake District JSP and DPD's, of South Lakeland Local Development Framework.
7	Related documents	All DPD's, others specific to each SPD.
8	Jointly produced with others	Production inhouse but in close liaison with LSP, NPA's and amenity groups.
9	Requires joint working for implementation	No
10	Timetable	Individually timed, see project plan for details.
	10.1 Likely Commencement	May 2007
	10.2 Start of public participation on draft report	November 2008
	10.3 Adoption and Publication	May 2009

Schedule of proposed Local Development Framework Document (cont.)

5.6b Amenity		
1	Title	Amenity
2	Status	Supplementary Planning Document
3	Geographical Area	South Lakeland LDF area
4	Description	Generic or area based guidance and advice on amenity issues and neighbourly development.
5	Proposed content/elements	Setting out guidance on good practice in undertaking residential development and extensions and the factors which will be addressed by the Council in determining whether proposals are neighbourly.
6	Chain of conformity	Consistent with national planning policy and general conformity with RSS, Cumbria and Lake District JSP and DPD's, of South Lakeland Local Development Framework.
7	Related documents	All DPD's, specific to each SPD.
8	Jointly produced with others	Production inhouse in close liaison with LSP, NPA and amenity groups.
9	Requires joint working for implementation	No
10	Timetable	Individually timed, see project plan for details.
	10.1 Likely Commencement	May 2007
	10.2 Start of public participation on draft report	November 2008
	10.3 Adoption and Publication	May 2009

Schedule of proposed Local Development Framework Document (cont.)

5.6c Conservation		
1	Title	Conservation
2	Status	Supplementary Planning Document
3	Geographical Area	South Lakeland LDF area (designated buildings and areas)
4	Description	Generic and Conservation Area based guidance and advice on conservation management issues within the district.
5	Proposed content/elements	Conservation Area reviews and Building at Risk <ul style="list-style-type: none"> • A series of ten CA appraisals and action plans for proactive conservation management and the management of Buildings at Risk.
6	Chain of conformity	Consistent with national planning policy and general conformity with RSS, Cumbria and Lake District JSP and DPD's, of South Lakeland Local Development Framework.
7	Related documents	All DPD's, specific to each SPD.
8	Jointly produces with others	Production inhouse in close liaison with civic and amenity groups.
9	Requires joint working for implementation	No
10	Timetable	Individually timed, see project plan for details.
	10.1 Likely Commencement	September 2004 (actual)
	10.2 Start of public participation on draft report	November 2008
	10.3 Adoption and Publication	May 2009

Schedule of proposed Local Development Framework Document (cont.)

5.6d Wind Energy		
1	Title	Wind Energy
2	Status	Supplementary Planning Document
3	Geographical Area	Joint SPD for whole of Cumbria County (excluding YDNP).
4	Description	The joint Wind Energy SPD will provide detailed guidance on design, landscape or visual impacts and landscape capacity to developers and local planning authorities in Cumbria.
5	Proposed content/elements	The joint SPD will comprise: - <ul style="list-style-type: none"> • guidance on preparing wind energy proposals • landscape capacity assessment • guidance on landscape and visual impact assessment
6	Chain of conformity	Consistent with national planning policy and general conformity with RSS, Cumbria and Lake District JSP and DPD's, of South Lakeland Local Development Framework.
7	Related documents	All DPD's, specific to each SPD.
8	Jointly produced with others	Joint working with Local Planning Authorities in Cumbria, led by Cumbria County Council.
9	Requires joint working for implementation	Yes
10	Timetable	Individually timed, see project plan for details.
	10.1 Likely Commencement	November 2005 (actual)
	10.2 Start of public participation on draft report	September 2006
	10.3 Adoption and Publication	March 2007

Schedule of proposed Local Development Framework Document (cont.)

5.6e Landscape		
1	Title	Landscape
2	Status	Supplementary Planning Document
3	Geographical Area	Joint SPD for whole of Cumbria County (excluding YDNP),
4	Description	The joint SPD will provide detailed advice on how changes in land management and development can conserve or enhance landscape character.
5	Proposed content/elements	The joint SPD is expected to contain guidance on:- <ul style="list-style-type: none"> • landscape character and classification • 'character based' approach to development control • character of small settlement and sensitivity to new development • categories of development as they affect landscape
6	Chain of conformity	Consistent with national planning policy and general conformity with RSS and Cumbria and Lake District JSP.
7	Related documents	All DPD's, specific to each SPD.
8	Jointly produced with others	Joint working with Local Planning Authorities in Cumbria, led by Cumbria County Council.
9	Requires joint working for implementation	Yes
10	Timetable	Individually timed, see project plan for details.
	10.1 Likely Commencement	April 2006
	10.2 Start of public participation on draft report	February 2007
	10.3 Adoption and Publication	August 2007

Research requirement for the process

6.0 Research requirements for the process

6.1 To facilitate the formulation of Local Development and Supplementary Planning Documents and in order to provide a robust evidence base for a baseline Sustainability Assessment and Strategic Environmental Assessment, we will need to gather a comprehensive range of background information and survey material. The scope of the information required to input into the spatial plans is broad ranging, encompassing environmental, economic, social and physical elements. This information will help to identify the opportunities, constraints and issues for the area.

6.2 In order to make the most efficient use of resources, existing 'in house' survey material and data will be utilised where it is up to date, or can be built upon. Where technical studies require particular expertise, then work will be commissioned from external consultants. Strategies and policy documents produced by South Lakeland District Council, other authorities, organisations and bodies ranging from the national level down to the local level will also need to be taken account of in the research process. The land use implications of

such strategies and policies will need to be assessed and used to inform the content of Local Development Documents.

6.3 Six key areas of work have been identified where further research is required. These key topic areas are:

- Flood Risk
- Housing (needs)
- Retail
- Open Space, Sports and Recreation - existing and future needs
- Economy; and
- Urban Capacity

6.4 The diagram/table over shows for each of the six key areas where further research is required, the existing survey information/strategy documents we have, its currency and what further survey information/strategy updates are required and whether the research will be carried out in house by SLDC or be commissioned from external consultants.



Research requirement for the process (cont.)

Key Research Areas	Existing Information: Source type and currency		SLDC -In house		External		Information required: Source and type		SLDC -In house		External	
	Environment Agency Flood Risk Maps	Environment Agency Flood Risk	No	Yes	Yes	No	Specific area appraisals and Strategic flood risk assessment	No	No	Probably to be commissioned on joint project with Environment Agency	To be commissioned by Housing Strategy Team for 2005/2006 to provide renewed currency	
Flood Risk			No	Yes	Yes	No	Specific area appraisals and Strategic flood risk assessment	No	No	Probably to be commissioned on joint project with Environment Agency	To be commissioned by Housing Strategy Team for 2005/2006 to provide renewed currency	
Housing		Housing Needs: Current District Wide Housing Needs Survey, completed 2002. Also have a number of village/parish housing needs surveys. The next district wide survey covering all parishes will be completed in 2006. This will take account of the draft PPS 3, which talks about regional/sub regional surveys. The current Housing Strategy is the South Lakeland Housing Strategy 2002 - 2006. There are a number of sub-strategies, i.e The Cumbria Homelessness Strategy 2003 - 2008, South Lakeland Young People's Housing Strategy 2003 - 2006, South Lakeland's Older Person's Housing Strategy 2003 - 2006, and the South Lakeland Private Sector Housing Strategy 2004 - 2007.	Yes	No	No	No	Next District wide Parish Housing Needs Survey will be completed in 2006	No	No	Probably to be commissioned on joint project with Environment Agency	To be commissioned by Housing Strategy Team for 2005/2006 to provide renewed currency	

Research requirement for the process (cont.)

Key Research Areas	Existing Information: Source type and currency	SLDC -In house	External	Information required: Source and type	SLDC -In house	External
Housing	<p>Housing Supply: Annual monitoring reports for the 12 month period ending 31 03. Monitoring of planning applications with planning permission not expired, whether units started, under construction or completed. Also monitored housing type, market type, if affordable. Annual monitoring reports produced by Cumbria County Council.</p> <p>The latest 12 month report is for the year ending 31 03 03. The monitoring for the report year ending 03 04 and 03 05 is in progress. Also in house monitoring by SLDC Planning Services of housing units - planning permissions granted etc. Monthly monitoring reports to SLDC Planning Committee re units - planning permissions granted and progress towards targets set in RPG and proposed review of Structure Plan.</p>	Yes	No	Requires constant monitoring and updating	Yes	No
Economy	<p>Economy Strategy: South Lakeland Economic Development Strategy, 2004.</p>	Yes	No	Review of Economy Strategy post 2004.	Yes	No



Research requirement for the process (cont.)

Key Research Areas	Existing Information: Source type and currency		SLDC -In house		External		Information required: Source and type		SLDC -In house		External	
			Yes	No	Yes	No	Yes	No	Yes	No	Yes	No
Economy	Employment Land Availability Monitoring. Annual monitoring of employment land take up. Monitoring undertaken by SLDC and Cumbria County Council, Strategic Planning Policy Unit.		Yes	Yes	Yes	Yes	Yes	Yearly monitoring of employment land take up.	Yes		Yes	Cumbria County Council Strategic Planning Policy unit
Economy - Retail	Existing Retail Studies: Grange-Over-Sands Retail Study, September 2003. Kendal Retail Study 2000.		Yes	No	Yes	No	Retail Assessments Required for Ulverston and an up to date position with regard to retail capacity in Kendal and other key service centre at Milnthorpe and Kirkby Lonsdale. New district wide study has been commissioned with Lancaster City Council.	Has been commissioned	Yes		Yes	
Economy - Retail	Town Centre Health Check Surveys carried out periodically by SLDC Planning Services in the primary shopping areas of Kendal, Milnthorpe, Ulverston, Kirkby Lonsdale and Grange Over Sands. Cumbria County Council compiles reports on town centre vitality for the Cumbrian Districts.		Yes	Cumbria	Yes		Periodical Town Centre Health Check Surveys	No	Yes		Yes	No

Research requirement for the process (cont.)

Key Research Areas	Existing Information: Source type and currency	SLDC -In house	External	Information required: Source and type	SLDC -In house	External
Economy (Tourism & Culture)	Cultural Strategy 2004	Yes	No	Finalised 'Cultural Strategy' has been produced.	Yes	No
Economy, Tourism and Leisure				Tourism Strategy for South Lakeland (Cultural Strategy says to be prepared)	Yes	No
Economy/ Environment	Community Strategy 2004 - 2024 (prepared by SLDC and partners in the community)	Yes	LSP	Action Plan required to be produced for the community strategy.	Yes	No
Urban Capacity/ Brownfield Sites	Urban Capacity Study: Existing Survey: 1998 Urban Capacity Study using Llewelyn Davies Methodology. 1998 survey updated in November 2001 using the basic Llewelyn Davies Methodology.	Yes	No	Revised Urban Capacity Study completed May 2005 to meet R Assembly requirements	Yes	No
National Land Use Data Base of Previously Developed Land	Survey for 12months ending 31 03 03 undertaken	Yes	No	Survey for 12 months ending 31st March 2005 to be undertaken by ODPM Consultants	Yes	No

Research requirement for the process (cont.)

Key Research Areas	Existing Information: Source type and currency		SLDC -In house		External		Information required: Source and type		SLDC -In house		External	
Existing and Future Needs for Open Space, Sports and recreational Facilities	SLDC list of sports clubs June 2002. Spreadsheet of recreation and sports facilities. Quantitative data on SLDC pitches, play areas and SLDC maintained open spaces.		Yes				Playing Pitches Quantity and quality assessment of pitches in the district, including dual use, SLDC and non SLDC owned with community use, produce strategy for pitch use and derive local standards for pitch provision	Yes		May need to be commissioned by Sports group		
Existing and Future Needs for Open Space, Sports and recreational Facilities	None		No				Open Space - District wide audit of the quantity and quality of open/amenity spaces in the district. Formulate open space strategy and derive local standards for open space provision in new housing development	Yes		May need to be commissioned by Sports group		
Existing and Future Needs for Open Space, Sports and recreational Facilities	Sports Development data base of facilities. Sport England summaries of Facilities Planning Model for various facility types, 1999. Basic Facility Audit on Spreadsheet- 1999?.		Yes				Sports & Recreational Facilities Assessment of Needs and Opportunities. Revise and build on existing database held by Sports Development. Look at the quality of facilities as well as quantity. Assess facilities to see if gaps in provision within the District. Formulate local standards for facility provision.	Yes				

Monitoring, Review and Community Feedback

7.0 Monitoring, Review and Community Feedback

Review and Monitoring:-

7.1 Review, monitoring and feedback will be a continuous and pro-active process that will be crucial to the successful delivery of the Local Development Framework's visions and objectives.

7.2 We plan to monitor the Local Development Framework in terms of the following:-

- A milestone approach to give a clear measurement of progress on the delivery of the plan.
- Assessments of the extent to which external trends and progress with delivery affect the currency of Local Development Framework policies.
- An evaluation through monitoring of the capacity of policies to deliver targets assessed by clear and focussed indicators.
- The publication of explicit feedback procedures from development control decision making and appeal success rates to ensure that policies provide comprehensive and robust mechanisms to deliver LDF objectives.
- Recognising national and regional policy objectives and targets.

7.3 We will annually review actual progress with Local Development Documents and Supplementary Planning Documents compared with the targets and milestones set out in the Local Development Scheme.

7.4 Each monitoring period will cover the financial year - 1st April to 31st March. The Council will publish a monitoring report annually in December. Copies of the annual monitoring reports will be available in hard copy at a variety of venues or on the Council's Web Site at www.southlakeland.gov.uk.

Community Feedback:-

7.5 Monitoring to review the progress of the Local Development Framework (LDF) will be a continuous and evolving learning process. We see each annual review as building on and contributing to the evaluation process. Community feedback will be an integral part of this process. How and when we will engage the community is set out in our Statement of Community Involvement (SCI).



Monitoring, Review and Community Feedback (cont.)

7

Appendix 1

Appendix 1 Resource Allocations to the Local Development Framework

The Council will rely on resources from within the Planning Services Group to lead the LDF preparation but will call on resources within the wider Council remit to cover specific areas of expertise. The overall direction of the plan and its performance will be managed by the Development Plans Manager (DPM), who will lead the stages of the review of the Local Plan and the preparation of the LDF. He will be supported by a principal Planning Officer specialising in Development planning and Implementation together with a Development Plans Officer, with administrative and technical support provided by a Technician (1.0 FTE) and Group Assistant.

Planning Officers within the Development Control group which is part of Planning Services, will support Development Plan officers as and when needed, in particular on community engagement and policy implementation and will appear as expert witnesses at the Local Examination stage.

A revenue bid has been secured for the development of the LDF to cover document production, consultancy services, publicity and consultation exercises for 2005/06 and 2006/07.

During 2004/05 the LDF received an additional contribution of £100,000 from the Council's PDG settlement to cover exceptional data gathering and research costs and to pump prime community engagement. Further contributions to the LDF research fund will be made from future PDG awards depending on their scale. These will be used to commission external research on matters falling outside the Council's expertise.

APPENDIX

1

Appendix 1 (cont.)

APPENDIX

1

Appendix 2

Appendix 2 Possible Issues for Consideration as Action Area Plans or where appropriate SPD's

The Council has set out in Diagram 2a of the main document the basis upon which schemes are to be considered likely to be the subject of Action Plans within the LDF as part of a future LDS.

Their possible selection is based on the scale of the developments envisaged, the timescale for change, the likely presence of resources to find that change and the need for an Action Plan approach.

There are a number of projects across the district which might benefit from this approach. In the main they have not been included formally as AAP's because the clarity associated with commitment to either finance or timescale is uncertain. These projects may be developed as SPD's linked to policy in the Core Strategy or other DPD's, or may develop as separate Action Area Plans in the longer term. These potential projects include:

1. Northern Reaches Canal Restoration (Phase 1 Canal Head and Kendal environs)

A study looking at the implications within the town and the area at Canal Head associated with the rebuilding of the canal link to Lancaster. It would examine issues for the designated canal corridor within the town addressing the need for specific District Council policies to aid regeneration.

It would evaluate the impacts of investment to generate new business, employment, housing and leisure/cultural opportunities and the relationship of these investments to the core strategy and targets.

It would consider the related issues associated with the Kendal Riverside and links to Kendal Town Centre and the Conservation Area.



APPENDIX 2

Appendix 2 (cont.)

2. Grange Town Centre and Promenade

A study to evaluate the consequences for the application of National Planning Policy and to manage the implementation of investment from the private sector on key opportunity sites within Grange, to deliver economic well being and to stem the decline of this resort town. Work progressing with involvement of 3P's Group.



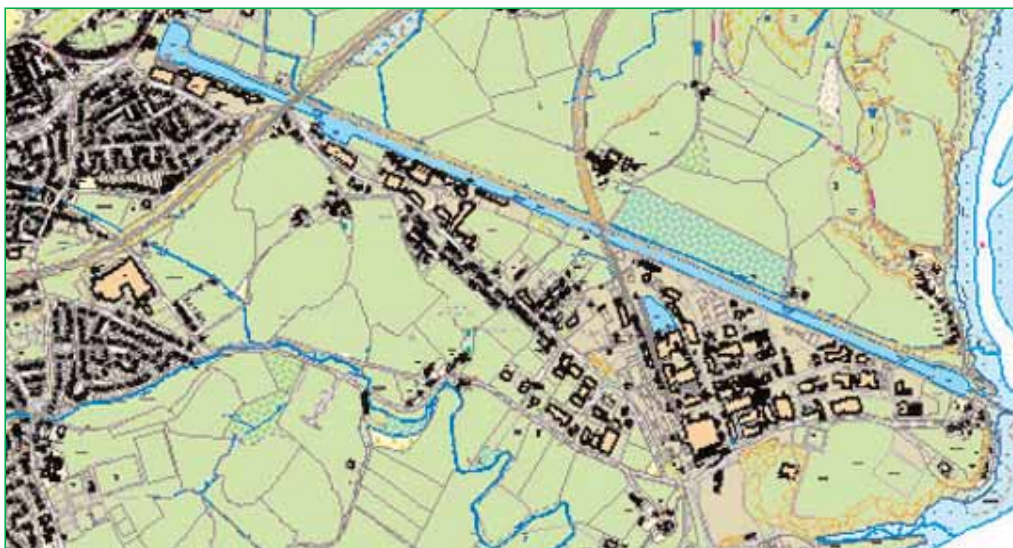
3. Ulverston Canalside Regeneration

An area adjacent to the canal and auction mart in Ulverston characterised by under-utilised building and warehouses in close proximity to the centre of the market town of Ulverston.

The re-use and regeneration of this area is constrained by ownerships and commercial restrictions associated with Glaxo's land holdings, but the land represents a potential area of significant commercial redevelopment.

As an Action Plan it will be geographically quite small. The potential for change and growth and its proximity to Ulverston town centre place this scheme on the potential list for Action Plan work.

A project brief recruiting consultants to undertake assessment work leading towards a Masterplan approach is now completed and will influence the timing and possible inclusion of the scheme in the LDF as an Action Plan.



Appendix 2 (cont.)

4. Gateway Project

A prospective development issue of some controversy located in and around the farm complex at Lane Farm, Preston Patrick. The centre has been suggested as a gateway hub designed to focus tourism demand approaching the Lake District from the south providing a resource to disseminate information about attractions and tourism potential in the southern and western Lakes together with Barrow and the Cumbrian west coast. The project is coupled with an agricultural focus on the regeneration of farming in South Cumbria following foot and mouth and is linked with transportation investment, agricultural service investment and farm shop retailing to make a viable project capable of sustaining sufficient visitor interest.

As an Action Plan the project would develop some legitimacy within the policy framework of the LDF. At present the proposals are outside current Development Plan policy and are not in accordance with Regional guidance. If they are to progress it would have to be as a stand alone proposal as a departure from the Development Plan which would be likely to be considered by SOS at a Public Local Inquiry. If this course of action is rejected by the Gateway project partnership examination through the LDF might become more relevant.

